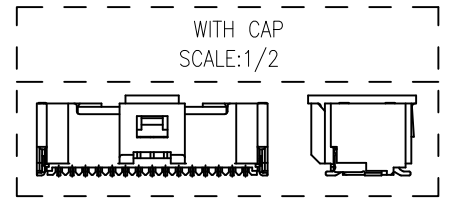
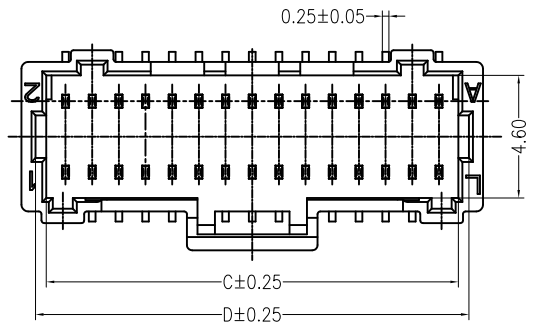
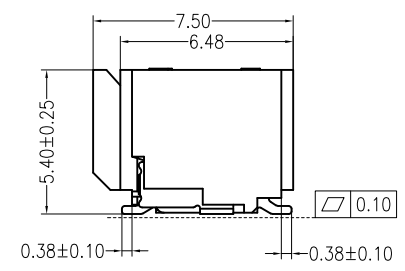
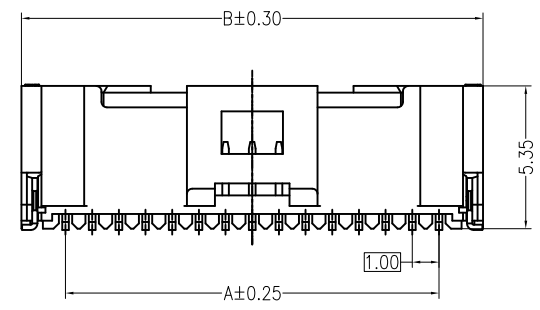


REV	DESCRIPTION	DESIGN	DATE
A	NEW RELEASE	FangSongLe	2020/09/23



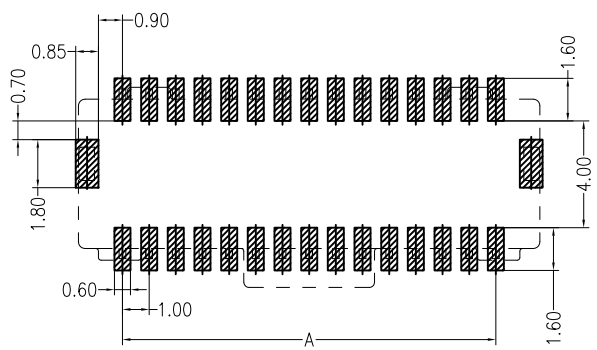
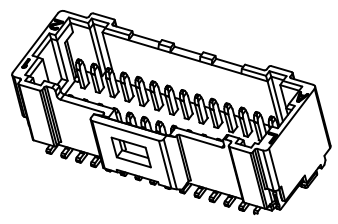
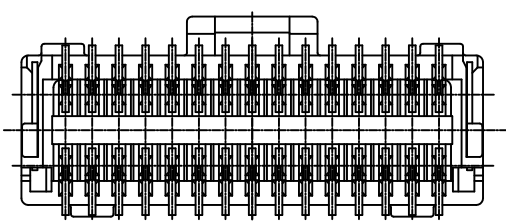
Specifications:  
 Poles: 20 to 50  
 Contact resistance: ≤20mΩ  
 Insulation resistance: ≥100MΩ  
 Rated voltage: 50V AC DC  
 Rated current: 0.8A AC DC  
 Withstand Voltage: 250V AC/minute  
 Temperature Range: -25°C ~ +85°C  
 Housing: PA9T UL94V-0, Natural  
 Contacts: Phosphor Bronze / Gold-plated  
 Solder tabs: Brass / MATTE Sn-plated  
 Cap: PA9T UL94V-0, Natural



ORDER INFORMATION:

**A1008AWV-2\*\*-D1CC1-R-X**

PART No.	X:CAP
No. OF CIRCUITS:	PACKAGING:
20-50P	R=REEL
PLASTIC MATERIAL:	Metal code:
D1C=PA9T	1=PhosphorBronze
	PLATING:
	C= Gold

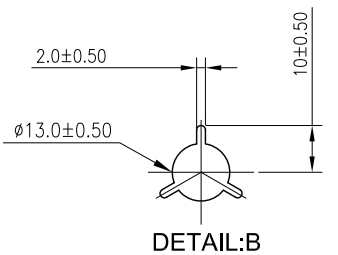
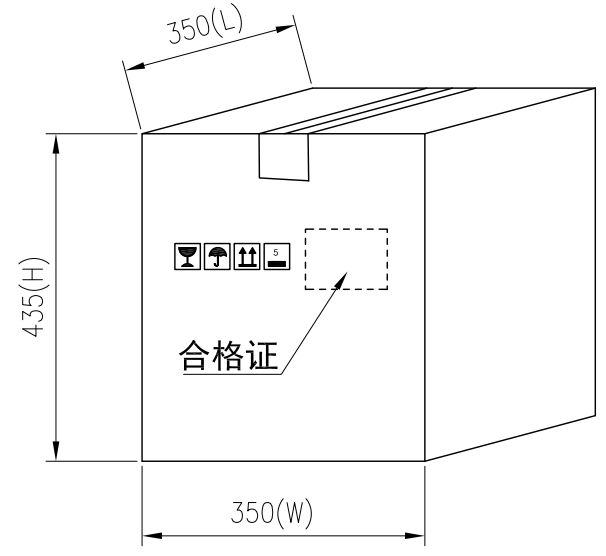
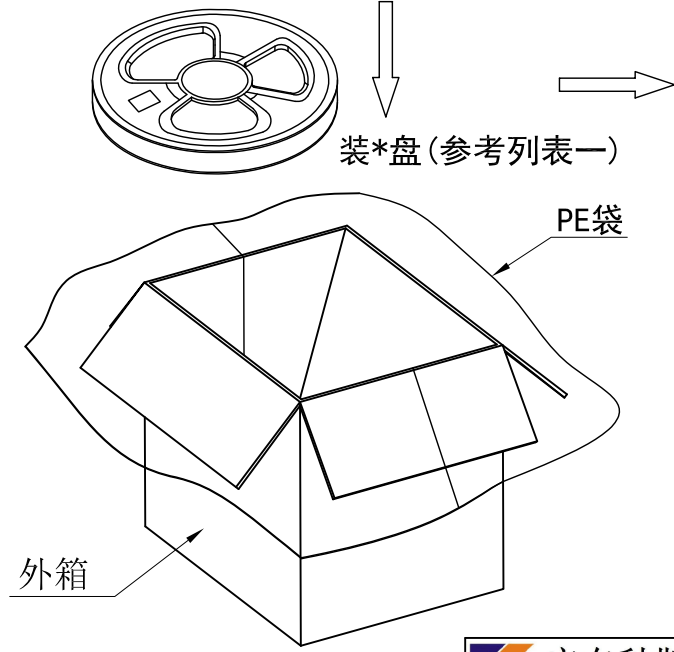
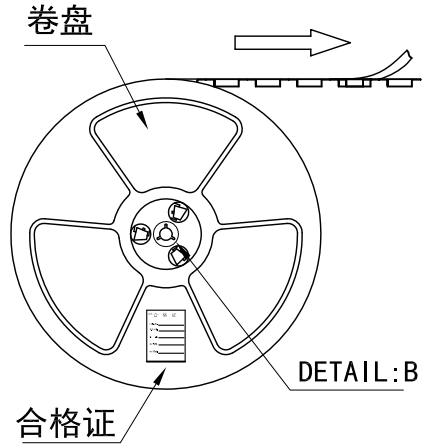
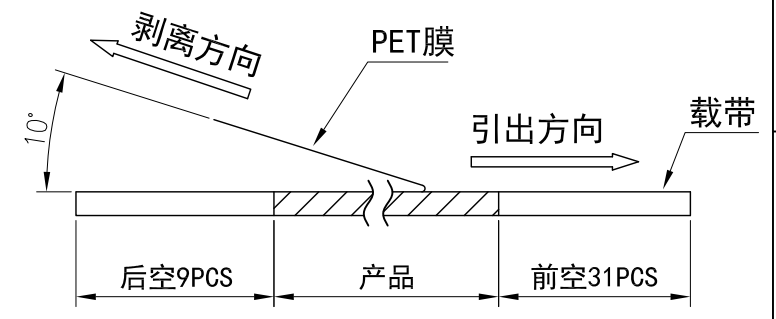
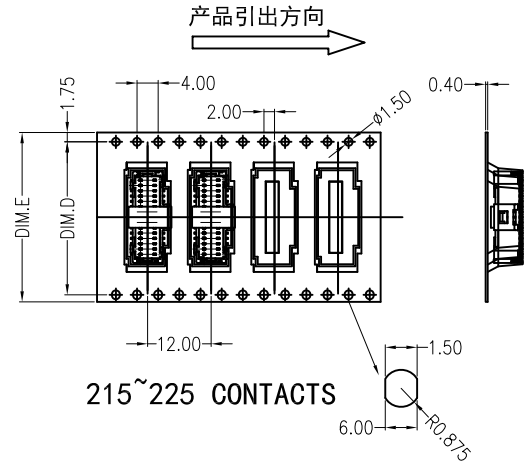
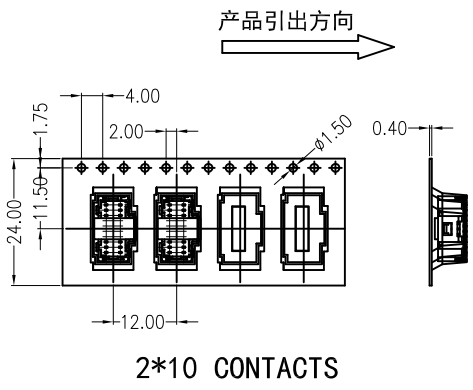


PCB LAYOUT (Tolerance: ±0.05)

PIN.	DIM A	DIM B	DIM C	DIM D
2x10P	9.00	12.30	10.45	11.25
2x15P	14.00	17.30	15.45	16.25
2x20P	19.00	22.30	20.45	21.25
2x25P	24.00	27.30	25.45	26.25

<b>广东科斯达电子科技有限公司</b> GUANG DONG KE SI DA ELECTRONIC TECHNOLOGY CO., LTD.		TITLE:	
		1.00 Pitch Wafer 180° SMT	
GENERAL TOLERANCE		USE:	PART NO.:
X. ±0.50	X. ±5°	CUSTOMER	A1008AWV-2**-D1CC1-R-X
X.X ±0.30	X.X ±2°	APPD:	DWG NO.:
X.XX ±0.20	X.XX ±1°	Liuzhengling	GCKH-0852
UNITS: mm		CHKD: Steven	SCALE
		DR: FangSongLe	SHEET
			1 : 1
			1 / 1

REV	ECN No.	DESCRIPTION	DESIGN	DATE
A		Release	蒋建银	2021.07.22



列表一

Circuits	DIM. D	DIM. E	Q'ty/Reel	Packing (Reel/Caton)
2*10PIN	-	24	800PCS	15/Reel
2*15PIN	28.4	32	800PCS	11/Reel
2*20~2*25PIN	40.4	44	800PCS	8/Reel

- 包装说明:
- 把成品包入卷盘中, 每盘装800PCS, 卷盘上贴上合格证, 将装好产品的卷盘放进外箱中, 外箱内先套一个大PE袋, 外箱上贴贴上合格证.
  - 所有材料有害物控制需符合RoHS标准.

广东科斯达电子科技有限公司  
GUANG DONG KE SI DA ELECTRONIC TECHNOLOGY CO., LTD.

X.± 0.5	X.±'	USE: CUSTOMER
.X± 0.3	.X±'	APPD: 邵敬和
.XX±0.25	.XX±'	CHKD: 方松乐
--	--	DR: 蒋建银
UNITS: mm		

TITLE:	
PART NO.:	A1008AWW 卷装规范
DWG NO.:	GCBZ-0852
SCALE	SHEET
1 : 1	1 / 1