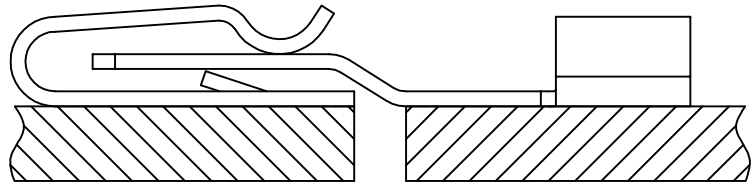
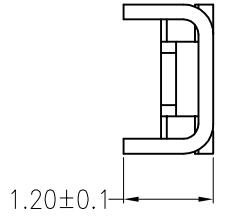
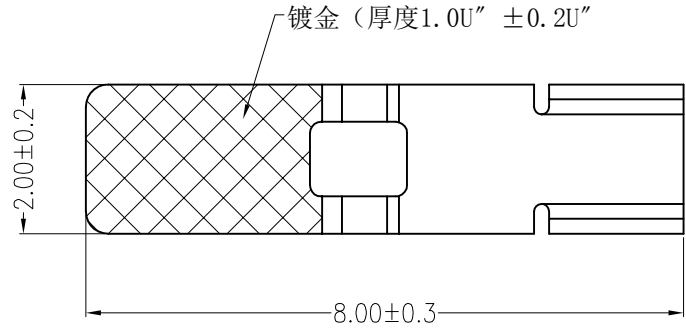


REV	DESCRIPTION	DESIGN	DATE
A0	Release	吴丹平	2016.04.30

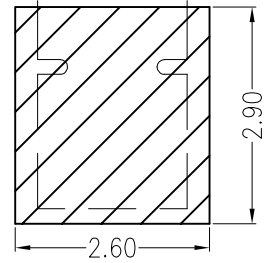
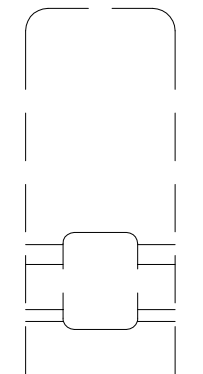
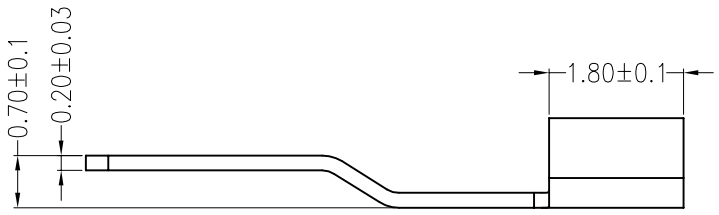
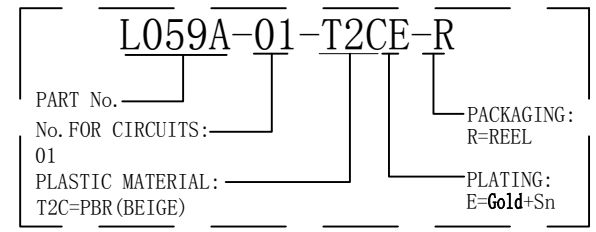


Assembly Layout

主要技术参数 Main Specifications

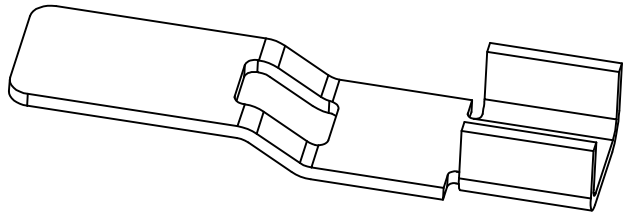
- 线数 (Poles): 01
- 接触电阻 (Contact resistance): $\leq 20\text{m}\Omega$
- 绝缘电阻 (Insulation resistance): $\geq 800\text{M}\Omega$
- 额定电压 (Rated voltage): 250 V AC DC
- 额定电流 (Rated current): 3.0A AC DC
- 耐电压 (Withstand Voltage): 1500V AC/minute
- 温度范围 (Temperature Range): $-45^{\circ}\text{C} \sim +125^{\circ}\text{C}$

ORDER INFORMATION:



Board Layout

General Tolerance: ± 0.05



ITEM	COMPONENT	Q'TY	MATERIAL	FINISH
A	CONTACT	1 PCS	PhosphorBronze	Gold+Sn-plated

广东科斯达电子科技有限公司
GUANG DONG KE SI DA ELECTRONIC TECHNOLOGY CO., LTD.

TITLE: --

PART NO.: L059A-01-T2CE-R

DWG NO.: GCCP-0206

SCALE: 1 : 1

SHEET: 1 / 1

USE: CUSTOMER

APPD: 邵敬和

CHKD: 田峰

DR: 蒋建银

UNITS: mm

A

B

C

D

E

F

1

2

3

4

5

A

B

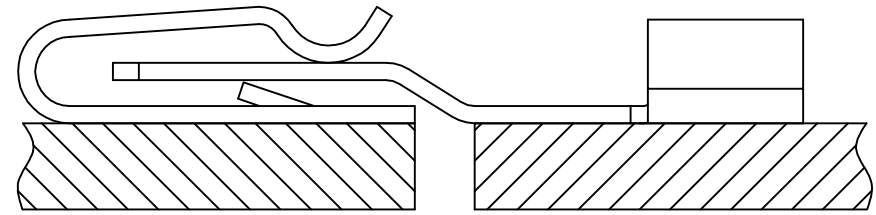
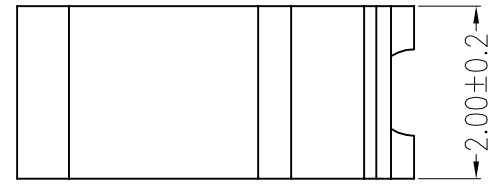
C

D

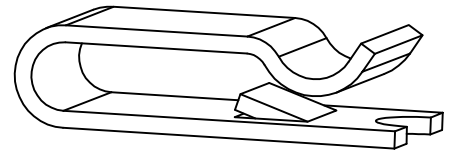
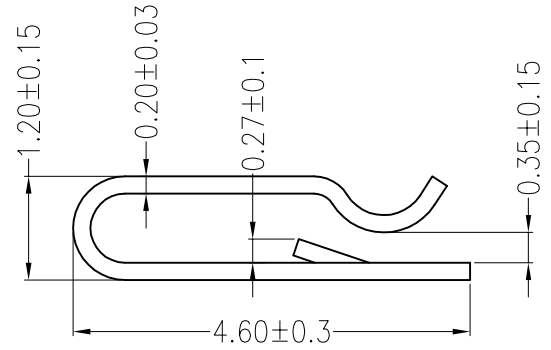
E

F

REV	DESCRIPTION	DESIGN	DATE
A0	Release	吴丹平	2016.04.30



Assembly Layout



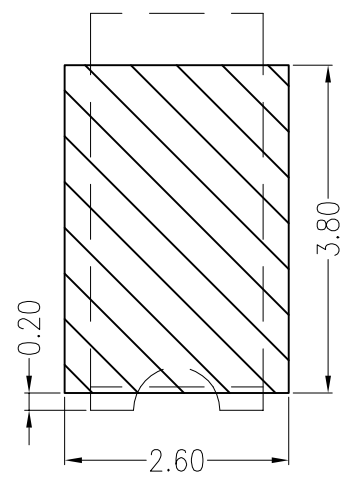
主要技术参数 Main Specifications

- 线数 (Poles): 01
- 接触电阻 (Contact resistance): $\leq 20\text{m}\Omega$
- 绝缘电阻 (Insulation resistance): $\geq 800\text{M}\Omega$
- 额定电压 (Rated voltage): 250 V AC DC
- 额定电流 (Rated current): 3.0A AC DC
- 耐电压 (Withstand Voltage): 1500V AC/minute
- 温度范围 (Temperature Range): $-45^{\circ}\text{C} \sim +125^{\circ}\text{C}$

ORDER INFORMATION:

L059B-01-T2CB-R

PART No. _____	PACKAGING: R=REEL
No. FOR CIRCUITS: 01	PLATING: B=MATTE Sn
PLASTIC MATERIAL: T2C=PBR (BEIGE)	



Board Layout

General Tolerance: ± 0.05

ITEM	COMPONENT	Q'TY	MATERIAL	FINISH
A	CONTACT	1 PCS	PhosphorBronze	MATTE Sn-plated

广东科斯达电子科技有限公司 GUANG DONG KE SI DA ELECTRONIC TECHNOLOGY CO., LTD.		TITLE: --	
X.±0.5	X.±5'	USE: CUSTOMER	PART NO.: L059B-01-T2CB-R
.X±0.3	.X±2'	APPD: 邵敬和	DWG NO.: GCCP-0207
.XX±0.25	.XX±1'	CHKD: 田峰	
--	--	DR: 蒋建银	SCALE: 1 : 1
UNITS: mm		SHEET: 1 / 1	