

A

B

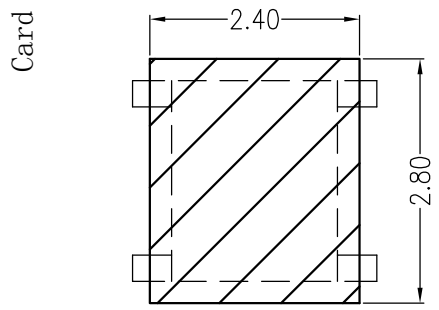
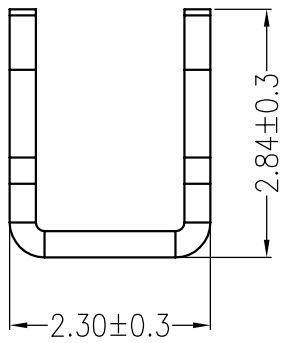
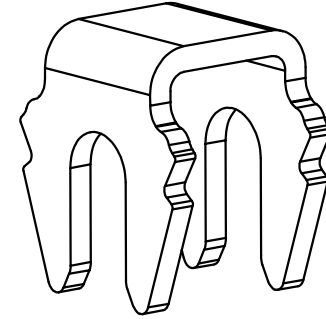
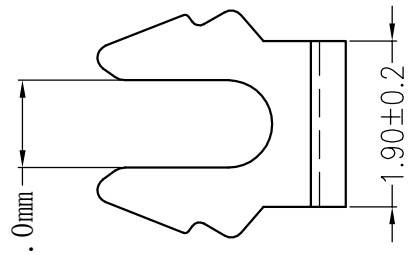
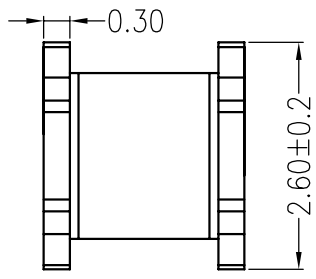
C

D

E

F

REV	ECN No.	DESCRIPTION	DESIGN	DATE
A0		Release	蒋建银	2018.10.16



Board Layout
General Tolerance: ±0.05

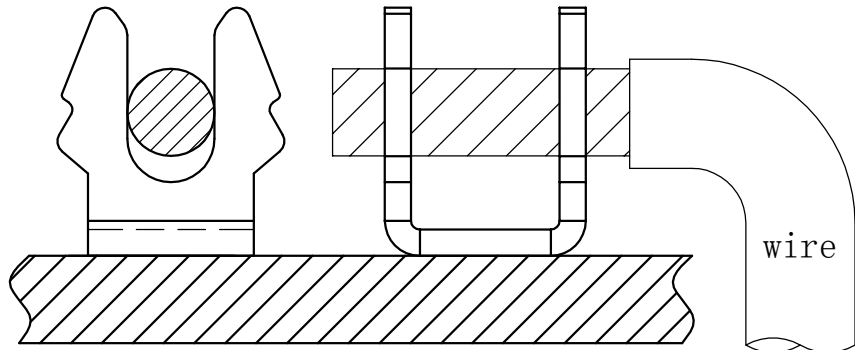
主要技术参数 Main Specifications

- 线 数 (Poles): 01
- 接触电阻 (Contact resistance): ≤20mΩ
- 绝缘电阻 (Insulation resistance):
- 额定电压 (Rated voltage): 250V AC DC
- 额定电流 (Rated current): 1.0A AC DC
- 耐 电压 (Withstand Voltage):
- 温度范围 (Temperature Range):

ORDER INFORMATION:

L036K-1.0-000B2-R

PART No.		PACKAGING:	
No. FOR CIRCUITS:		R=REEL	
1.0=Card slot1.0		P=PE	
PLASTIC MATERIAL:		Metal material:	
000=No plastic		2=Brass	
		PLATING:	
		B=MATTE Sn	



Assembly Layout Card slot 1.0mm 20AWG

ITEM	COMPONENT	Q'TY	MATERIAL	FINISH
C				
B				
A	CONTACT	1 PCS	Brass	MATTE Sn-plated

广东科斯达电子科技有限公司 GUANG DONG KE SI DA ELECTRONIC TECHNOLOGY CO., LTD.			TITLE: -
X.±0.5	X.±5'	USE: CUSTOMER	PART NO.: L036K-1.0-000B2-R
.X±0.3	.X±2'	APPD: 邵敬和	DWG NO.: GCCP-1235
.XX±0.25	.XX±1'	CHKD: 田峰	SCALE: 1 : 1
--	--	DR: 蒋建银	SHEET: 1 / 1
UNITS: mm			

A

B

C

D

E

F

1

2

3

4

5

1

2

3

4