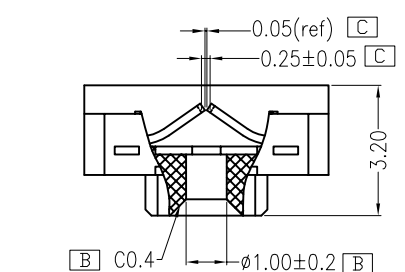
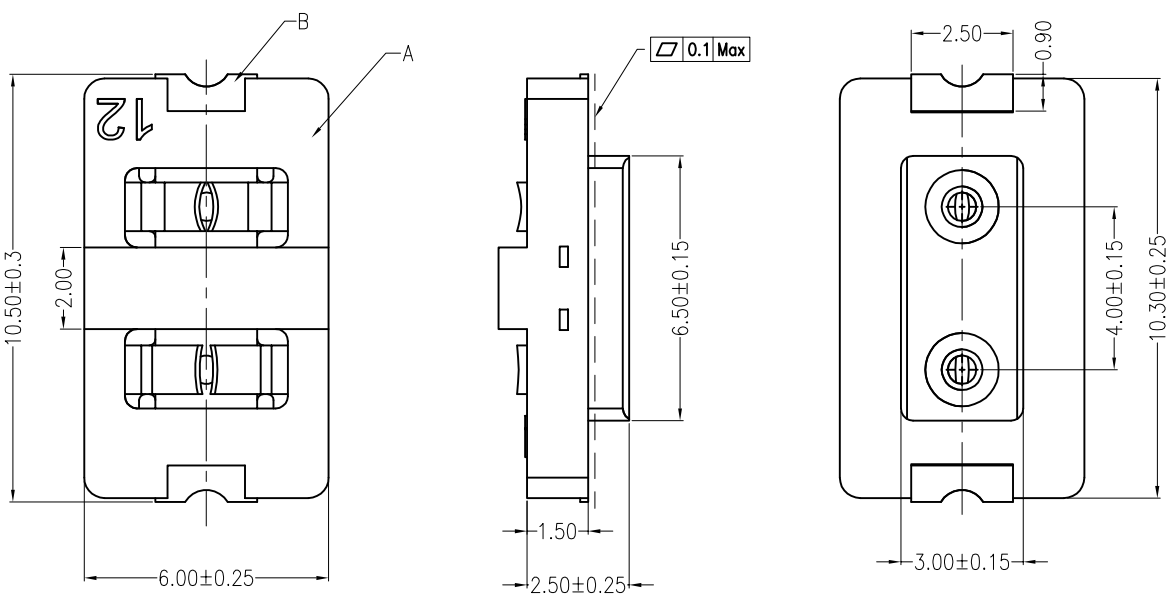


A B C D E F

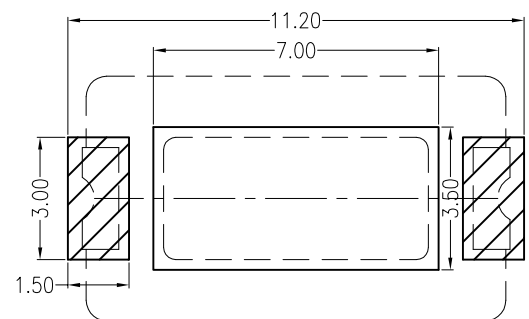
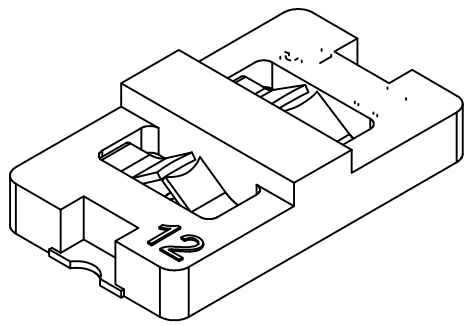
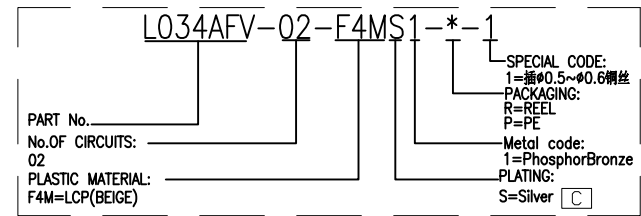
REV	DESCRIPTION	DESIGN	DATE
A	Release	吴丹平	2017.03.14
B	改善因线插入时簧片翘起	邵敬和	2017.05.10
C	电镀亮锡改成镀银 卡线处结构变更	吴丹平	2017.08.05
D	额定电压125V变更为275V	周秀龙	2017.11.16



主要技术参数 Main Specifications

- 线数 (Poles): 02 to 04
- 接触电阻 (Contact resistance): $\leq 20m\Omega$
- 绝缘电阻 (Insulation resistance): $\geq 1000M\Omega$
- 额定电压 (Rated voltage): 275V AC DC
- 额定电流 (Rated current): 1.0A AC DC
- 耐电压 (Withstand Voltage): 1000V AC/minute
- 温度范围 (Temperature Range): -40°C ~ +120°C

ORDER INFORMATION:



Board Layout
General Tolerance: ± 0.05

ITEM	COMPONENT	Q'TY	MATERIAL	FINISH
C				
B	CONTACT	2 PCS	PhosphorBronze	Silver-plated
A	HOUSING	1 PCS	LCP	UL 94V-0, COLOR:BEIGE

广东科斯达电子科技有限公司
GUANG DONG KE SI DA ELECTRONIC TECHNOLOGY CO., LTD.

TITLE: 4.0Pitch 180'wafer smt type

PART NO.: L034AFV-02-F4MS1-R-1

DWG NO.: GCCP-0435

SCALE: 1 : 1 SHEET: 1 / 1

USE: MANUFACTURE
APPD: 邵敬和
CHKD: 田峰
DR: 蒋建银

UNITS: mm

A B C D E F