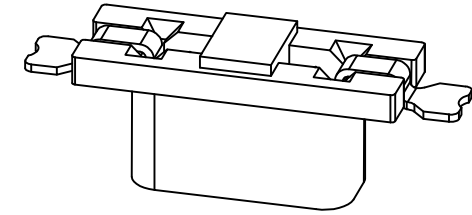
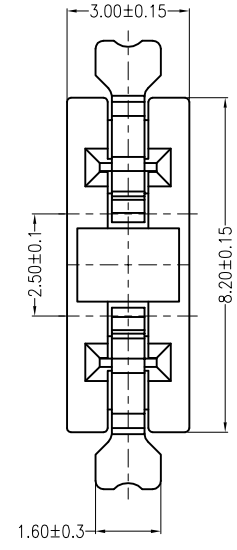
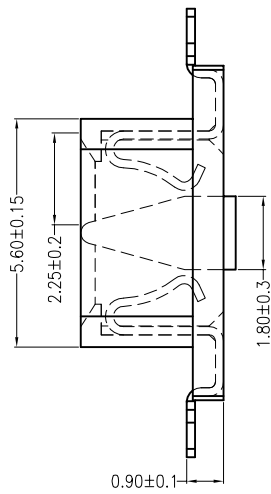
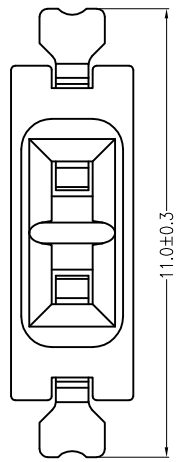


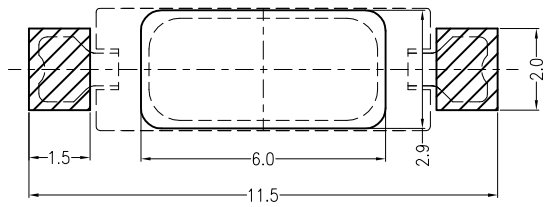
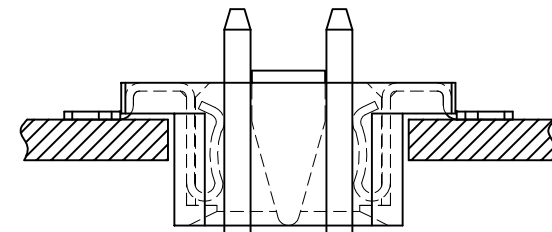
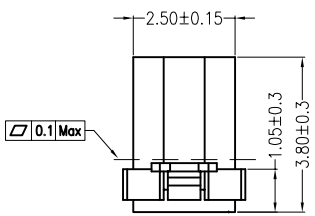
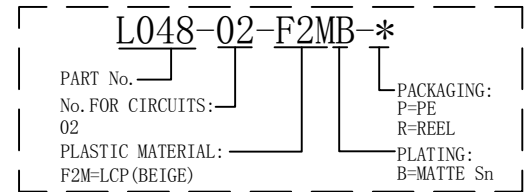
| REV | DESCRIPTION | DESIGN | DATE |
|-----|-------------|--------|------------|
| A0 | Release | 吴丹平 | 2016.04.30 |



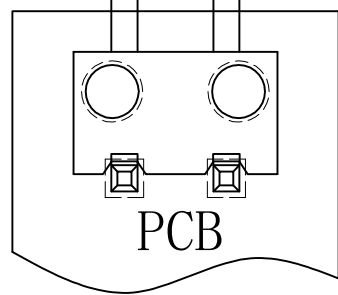
主要技术参数 Main Specifications

- 线 数 (Poles): 02
- 接触电阻 (Contact resistance): $\leq 20m\Omega$
- 绝缘电阻 (Insulation resistance): $\geq 1000M\Omega$
- 额定电压 (Rated voltage): 125V AC DC
- 额定电流 (Rated current): 1.0A AC DC
- 耐 电 压 (Withstand Voltage): 1500V AC/minute
- 温度范围 (Temperature Range): $-40^{\circ}C \sim +120^{\circ}C$

ORDER INFORMATION:



Board Layout



Assembly Layout

| ITEM | COMPONENT | Q'TY | MATERIAL | FINISH |
|------|-----------|-------|----------------|-----------------------|
| C | | | | |
| B | CONTACT | 2 PCS | PhosphorBronze | MATTE Sn-plated |
| A | PEDESTAL | 1 PCS | LCP | UL 94V-0, COLOR:BEIGE |

| | | | |
|-----------------------------------------------------------------------------|--------|-------------------------------------------|----------------|
| 广东科斯达电子科技有限公司 GUANG DONG KE SI DA ELECTRONIC TECHNOLOGY CO., LTD. | | TITLE: - 2.5mmPITCH 180°WAFER SMT TYPE | |
| X.±0.5 | X.±5° | USE: | PART NO.: |
| .X±0.3 | .X±2° | CUSTOMER | L048-02-F2MB-* |
| .XX±0.25 | .XX±1° | APPD: | DWG NO.: |
| -- | -- | 邵敬和 | GCCP-0160 |
| UNITS: mm | | CHKD: | SCALE |
| | | 田峰 | 1 : 1 |
| | | DR: | SHEET |
| | | 周秀龙 | 1 / 1 |