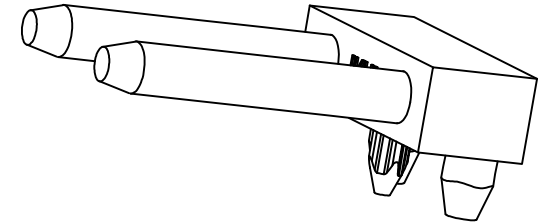
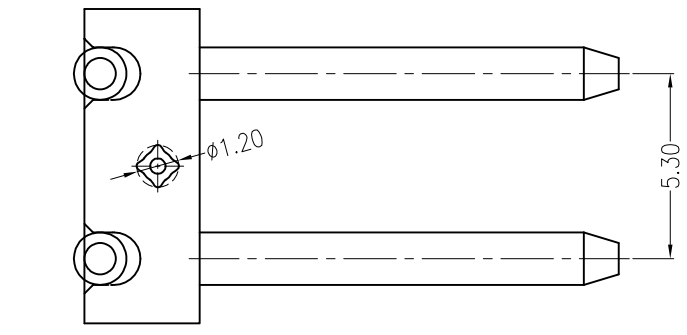
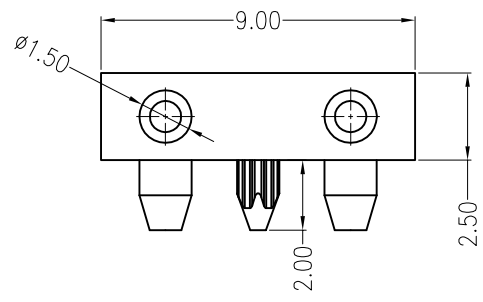
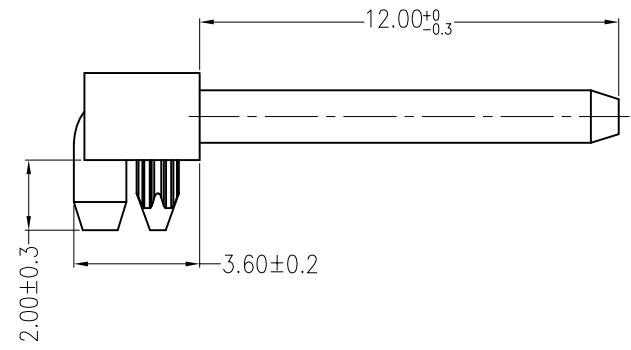


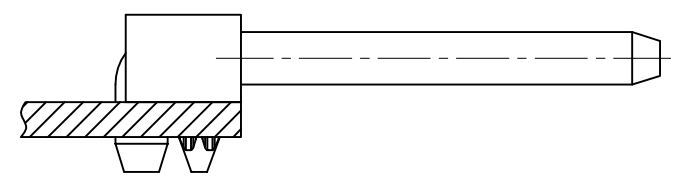
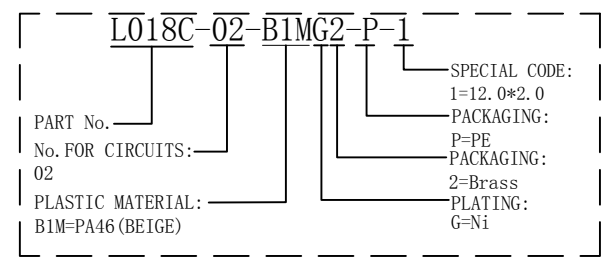
REV	ECN No.	DESCRIPTION	DESIGN	DATE
A0		Release	吴丹平	2017.05.08



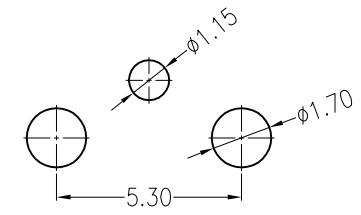
### 主要技术参数 Main Specifications

- 线数 (Poles): 02
- 接触电阻 (Contact resistance):  $\leq 20m\Omega$
- 绝缘电阻 (Insulation resistance):  $\geq 1000M\Omega$
- 额定电压 (Rated voltage): 250V AC DC
- 额定电流 (Rated current): 3.0A AC DC
- 耐电压 (Withstand Voltage): 1000V AC/minute
- 温度范围 (Temperature Range):  $-40^{\circ}C \sim +110^{\circ}C$

#### ORDER INFORMATION:



Assembly Layout

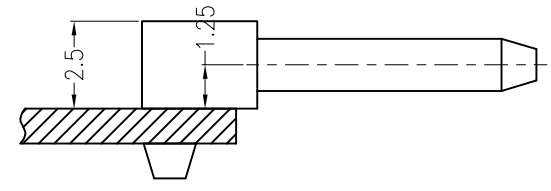
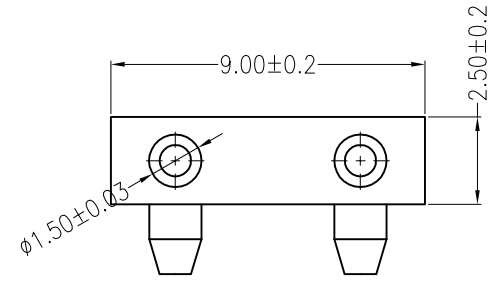
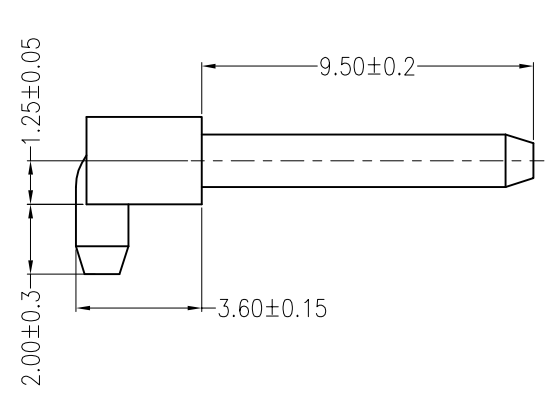


Board Layout  
General Tolerance:  $\pm 0.05$

C				
B	CONTACT	2 PCS	Brass	Ni-plated
A	PEDESTAL	1 PCS	PA46	UL 94V-0, COLOR:BEIGE
ITEM	COMPONENT	Q'TY	MATERIAL	FINISH

<b>广东科斯达电子科技有限公司</b> GUANG DONG KE SI DA ELECTRONIC TECHNOLOGY CO., LTD.		TITLE: L018C-02-1P 5.3mmPITCH 90°WAFER DIP TYPE	
X.±0.5	X.±5'	USE:	PART NO.:
.X±0.3	.X±2'	CUSTOMER	L018C-02-B1MG2-P-1
.XX±0.25	.XX±1'	APPD:	DWG NO.:
--	--	邵敬和	GCCP-0467
	UNITS: mm	CHKD:	SCALE
		田峰	1 : 1
		DR:	SHEET
		吴丹平	1 / 1

REV	ECN No.	DESCRIPTION	DESIGN	DATE
A0		Release	王启生	2014.12.15

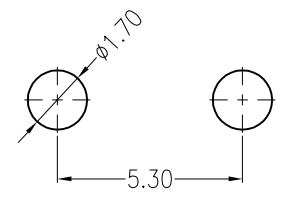
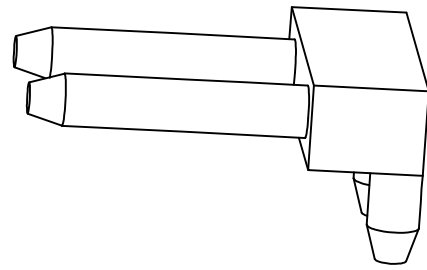
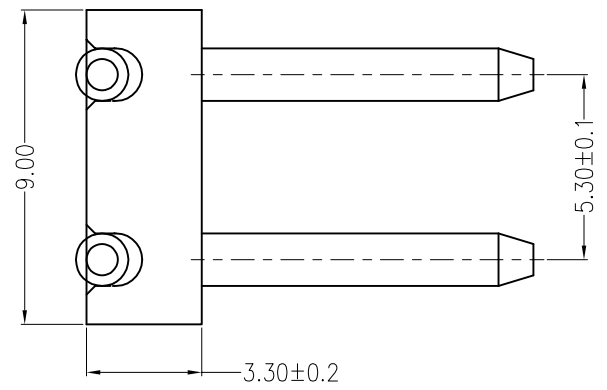
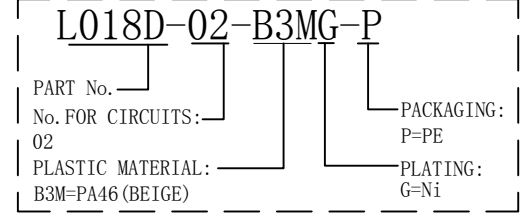


### Assembly Layout

### 主要技术参数 Main Specifications

- 线数 (Poles): 02
- 接触电阻 (Contact resistance): ≤20mΩ
- 绝缘电阻 (Insulation resistance): ≥1000MΩ
- 额定电压 (Rated voltage): 250V AC DC
- 额定电流 (Rated current): 3.0A AC DC
- 耐电压 (Withstand Voltage): 1000V AC/minute
- 温度范围 (Temperature Range): -40℃ ~ +110℃

### ORDER INFORMATION:



### Mating PCB detail

ITEM	COMPONENT	Q'TY	MATERIAL	FINISH
C				
B	CONTACT	2 PCS	Brass	Ni-plated
A	PEDESTAL	1 PCS	PA46	UL 94V-0, COLOR:BEIGE

<b>广东科斯达电子科技有限公司</b> GUANG DONG KE SI DA ELECTRONIC TECHNOLOGY CO., LTD.		TITLE: - 5.3mmPITCH 90°WAFER DIP TYPE	
X.±0.5	X.±5'	USE: CUSTOMER	PART NO.:
.X±0.3	.X±2'		L018D-02-B3MG-P
.XX±0.25	.XX±1'	APPD: 邵敬和	DWG NO.:
--	--	CHKD: 田峰	GCCP-0035
UNITS: mm	DR: 蒋建银	SCALE: 1:1	SHEET: 1/1

A

B

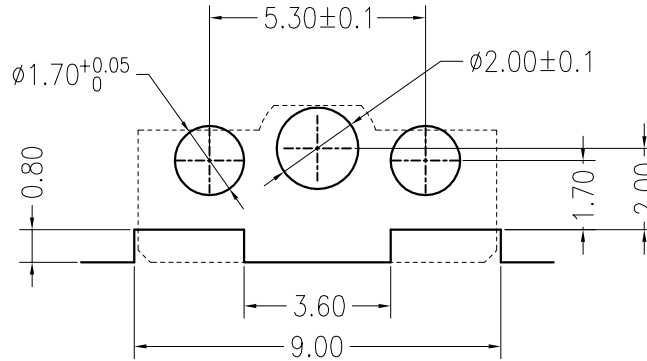
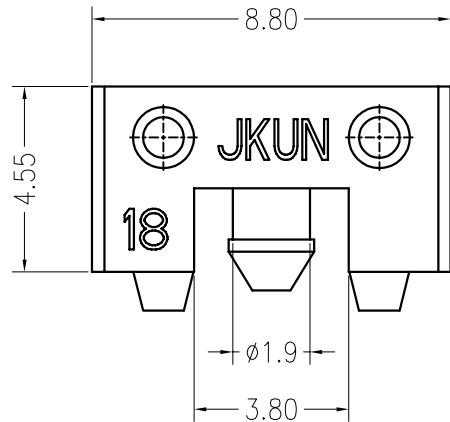
C

D

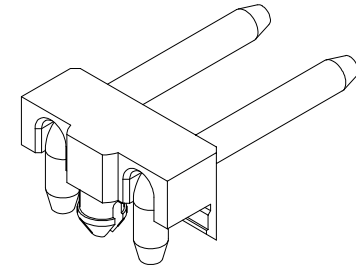
E

F

REV	ECN No.	DESCRIPTION	DESIGN	DATE
A0	-	Release	蒋建银	2018.08.29
-	-	-	-	-



Board Layout

General Tolerance:  $\pm 0.05$ 

### 主要技术参数 Main Specifications

线 数 (Poles): 02

接触电阻 (Contact resistance):  $\leq 20m\Omega$ 绝缘电阻 (Insulation resistance):  $\geq 1000M\Omega$ 

额定电压 (Rated voltage): 250V AC DC

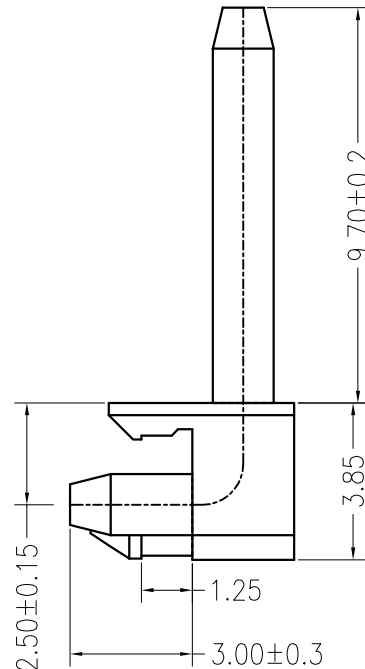
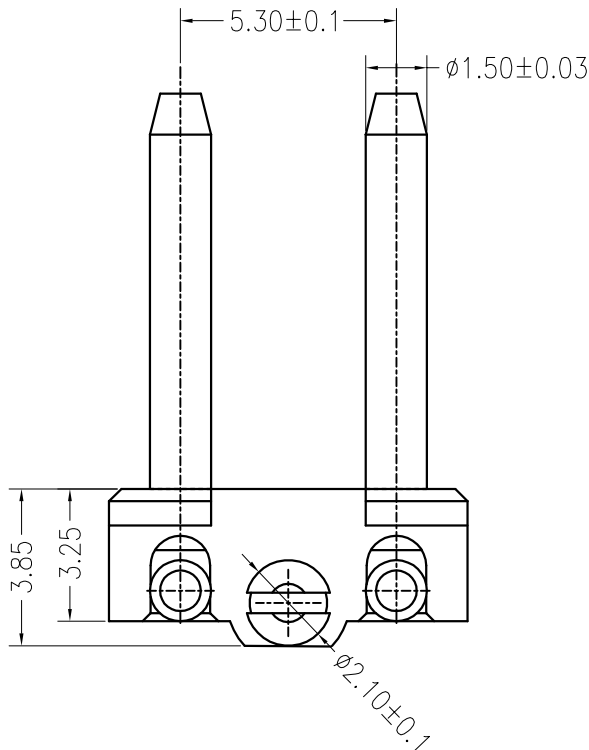
额定电流 (Rated current): 3.0A AC DC

耐 电压 (Withstand Voltage): 1000V AC/minute

温度范围 (Temperature Range):  $-40^{\circ}C \sim +110^{\circ}C$ 

### ORDER INFORMATION:

PART No.		L018E-02-B1MG2-P-1		SPECIAL CODE:
No.OF CIRCUITS:		02		弯针: 9.7*3.0
PLASTIC MATERIAL:		B1M=PA46(BEIGE)		PACKAGING:
				P=PE
				Metal code:
				2=Brass
				PLATING:
				G=Ni



ITEM	COMPONENT	Q'TY	MATERIAL	FINISH
C				
B	CONTACT	2 PCS	Brass	Ni-plated
A	HOUSING	1 PCS	PA46	UL 94V-0, COLOR:BEIGE



广东科斯达电子科技有限公司  
GUANG DONG KE SI DA ELECTRONIC TECHNOLOGY CO., LTD.

TITLE: -  
5.3mmPITCH 90°WAFER DIP TYPE

X.±0.5	X.±5'	USE:	PART NO.:
.X±0.3	.X±2'	CUSTOMER	L018E-02-B1MG2-P-1
.XX±0.25	.XX±1'	APPD: 邵敬和	DWG NO.:
--	--	CHKD: 田峰	GCCP-1207
		DR: 蒋建银	SCALE
UNITS: mm			1 : 1
			SHEET
			1 / 1

A

B

C

D

E

F

1

2

3

4

5

1

2

3

4

5