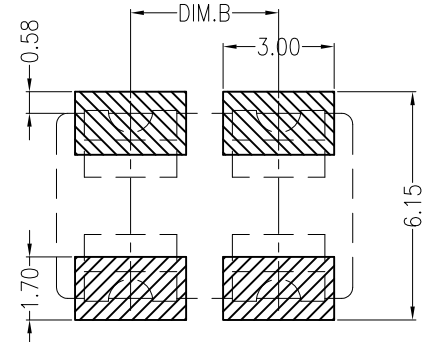
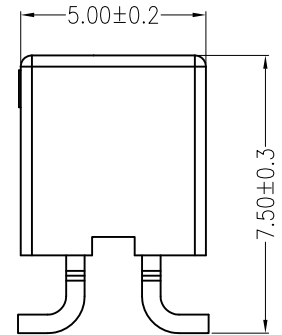
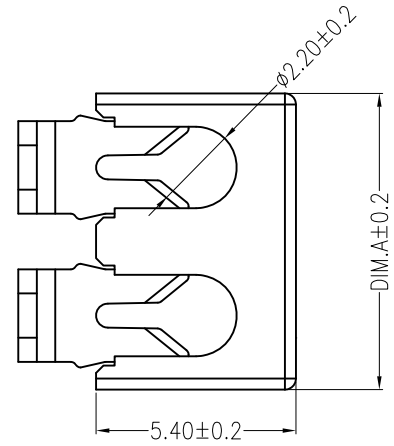
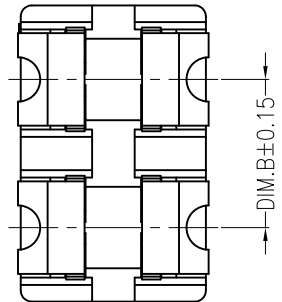
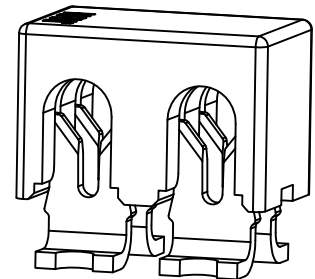


REV	DESCRIPTION	DESIGN	DATE
A	Release	李润	2016.01.15
A1	Correction of metallic material	蒋建银	2020.07.15



Board Layout

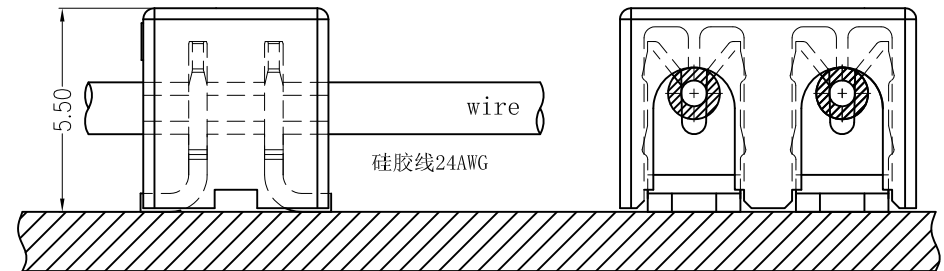
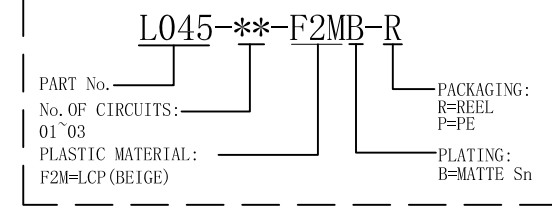
名称	尺寸	DIM. A	DIM. B	备注
L045-01		4.00		
L045-02		8.00	4.00	
L045-03		12.00	8.00	



主要技术参数 Main Specifications


- 线 数 (Poles): 01 to 03
- 接触电阻 (Contact resistance):  $\leq 20m\Omega$
- 绝缘电阻 (Insulation resistance):  $\geq 800M\Omega$
- 额定电压 (Rated voltage): 250V AC DC
- 额定电流 (Rated current): 2.0A AC DC
- 耐 电 压 (Withstand Voltage): 1500V AC/minute
- 温度范围 (Temperature Range):  $-40^{\circ}C \sim +120^{\circ}C$

ORDER INFORMATION:





Assembly Layout

C				
B	CONTACT	n PCS	Phosphor bronze [A1]	MATTE Sn -plated
A	HOUSING	1 PCS	LCP	UL 94V-0, COLOR:BEIGE
ITEM	COMPONENT	Q'TY	MATERIAL	FINISH


**广东科斯达电子科技有限公司**  
 GUANG DONG KE SI DA ELECTRONIC TECHNOLOGY CO., LTD.

**TITLE:** 4.0mm PITCH 180° WAFER SMT TYPE  
**PART NO.:** L045-\*\*-F2MB-R  
**DWG NO.:** GCCP-0074  
**SCALE:** 1 : 1     **SHEET:** 1 / 1

X.±0.35	X.±	USE:	MANUFACTURE
.X±0.25	.X±	APPD:	
.XX±0.15	.XX±		王亮
--	--	CHKD:	刘振岭
		UNITS:	DR:
		mm	蒋建银