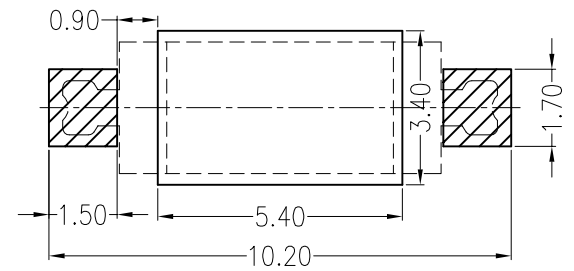
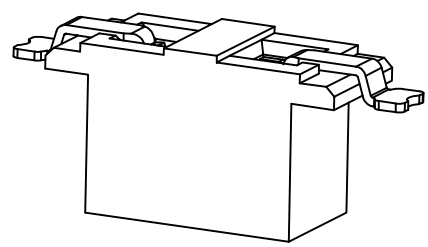
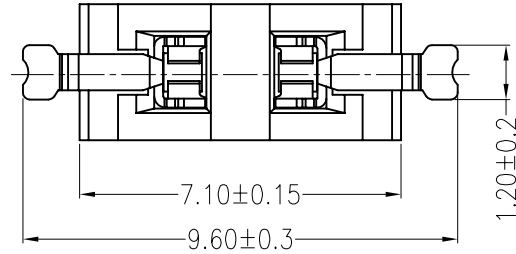
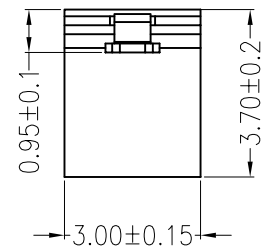
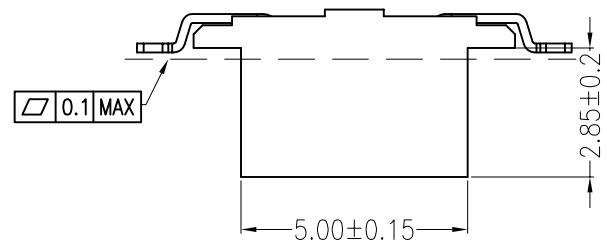


A B C D

REV	DESCRIPTION	DESIGN	DATE
A0	Release	吴丹平	2016.04.30



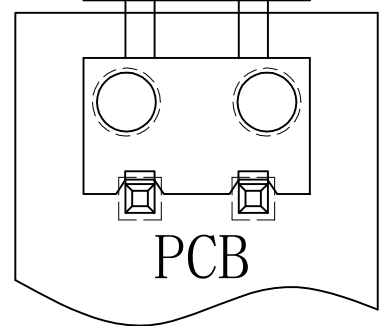
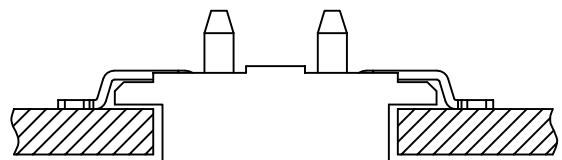
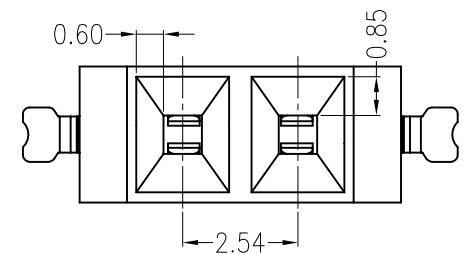
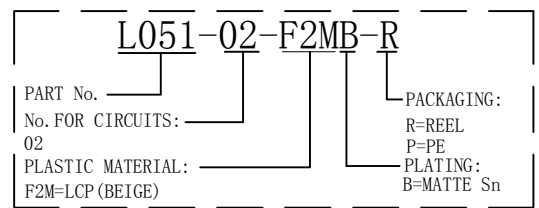
Board Layout  
General Tolerance: ±0.05



主要技术参数 Main Specifications

- 线数 (Poles): 02
- 接触电阻 (Contact resistance): ≤20mΩ
- 绝缘电阻 (Insulation resistance): ≥1000MΩ
- 额定电压 (Rated voltage): 125V AC DC
- 额定电流 (Rated current): 1.0A AC DC
- 耐电压 (Withstand Voltage): 1500V AC/minute
- 温度范围 (Temperature Range): -40℃ ~ +120℃

ORDER INFORMATION:



PCB  
Assembly Layout

ITEM	COMPONENT	Q'TY	MATERIAL	FINISH
C				
B	CONTACT	2 PCS	PhosphorBronze	MATTE Sn-plated
A	PEDESTAL	1 PCS	LCP	UL 94V-0, COLOR:BEIGE

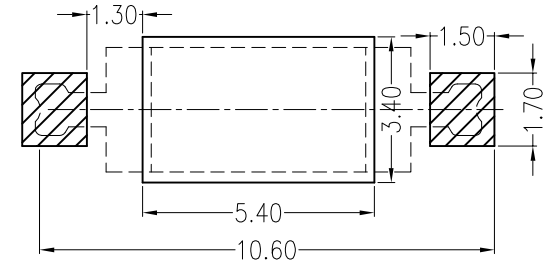
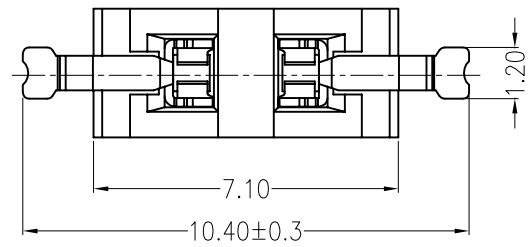
<b>广东科斯达电子科技有限公司</b> GUANG DONG KE SI DA ELECTRONIC TECHNOLOGY CO., LTD.		TITLE: - 2.54mmPITCH 180°WAFER SMT TYPE	
X.±0.5	X.±5'	USE: CUSTOMER	PART NO.:
.X±0.3	.X±2'		L051-02-F2MB-R
.XX±0.25	.XX±1'	APPD: 邵敬和	DWG NO.:
--	--	CHKD: 田峰	GCCP-0167
UNITS: mm		DR: 周秀龙	SCALE: 1 : 1
			SHEET: 1 / 1

A B C D E F

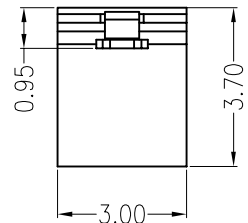
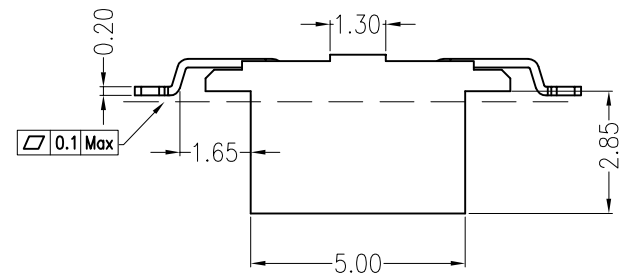
1  
2  
3  
4  
5

1  
2  
3  
4  
5

REV	DESCRIPTION	DESIGN	DATE
A0	Release	吴丹平	2016.04.30



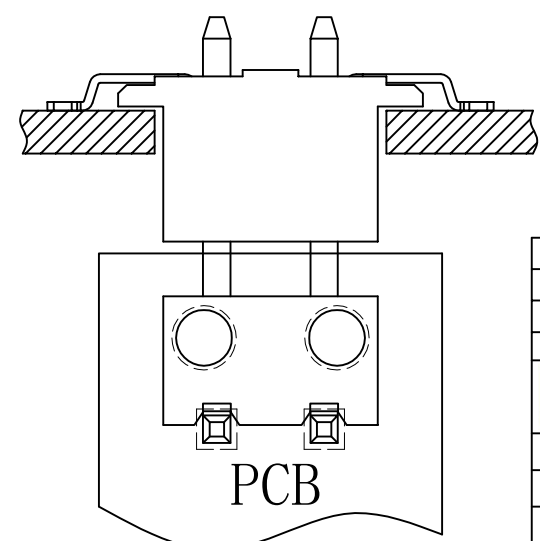
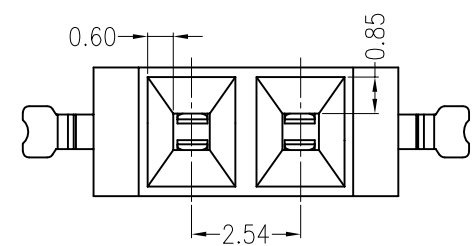
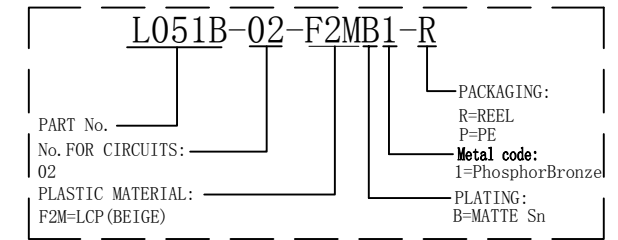
Board Layout  
General Tolerance: ±0.05



主要技术参数 Main Specifications

- 线数 (Poles): 02
- 接触电阻 (Contact resistance): ≤20mΩ
- 绝缘电阻 (Insulation resistance): ≥1000MΩ
- 额定电压 (Rated voltage): 125V AC DC
- 额定电流 (Rated current): 1.0A AC DC
- 耐电压 (Withstand Voltage): 1500V AC/minute
- 温度范围 (Temperature Range): -40℃ ~ +120℃

ORDER INFORMATION:



PCB  
Assembly Layout

ITEM	COMPONENT	Q'TY	MATERIAL	FINISH
C				
B	CONTACT	2 PCS	PhosphorBronze	MATTE Sn-plated
A	PEDESTAL	1 PCS	LCP	UL 94V-0, COLOR:BEIGE

**广东科斯达电子科技有限公司**  
GUANG DONG KE SI DA ELECTRONIC TECHNOLOGY CO., LTD.

TITLE: -  
2.54mmPITCH 180°WAFER SMT TYPE

USE: CUSTOMER  
APPD: 邵敬和  
CHKD: 田峰  
DR: 周秀龙

PART NO.: L051B-02-F2MB1-R  
DWG NO.: GCCP-0345

SCALE: 1 : 1  
SHEET: 1 / 1

A B C D E F