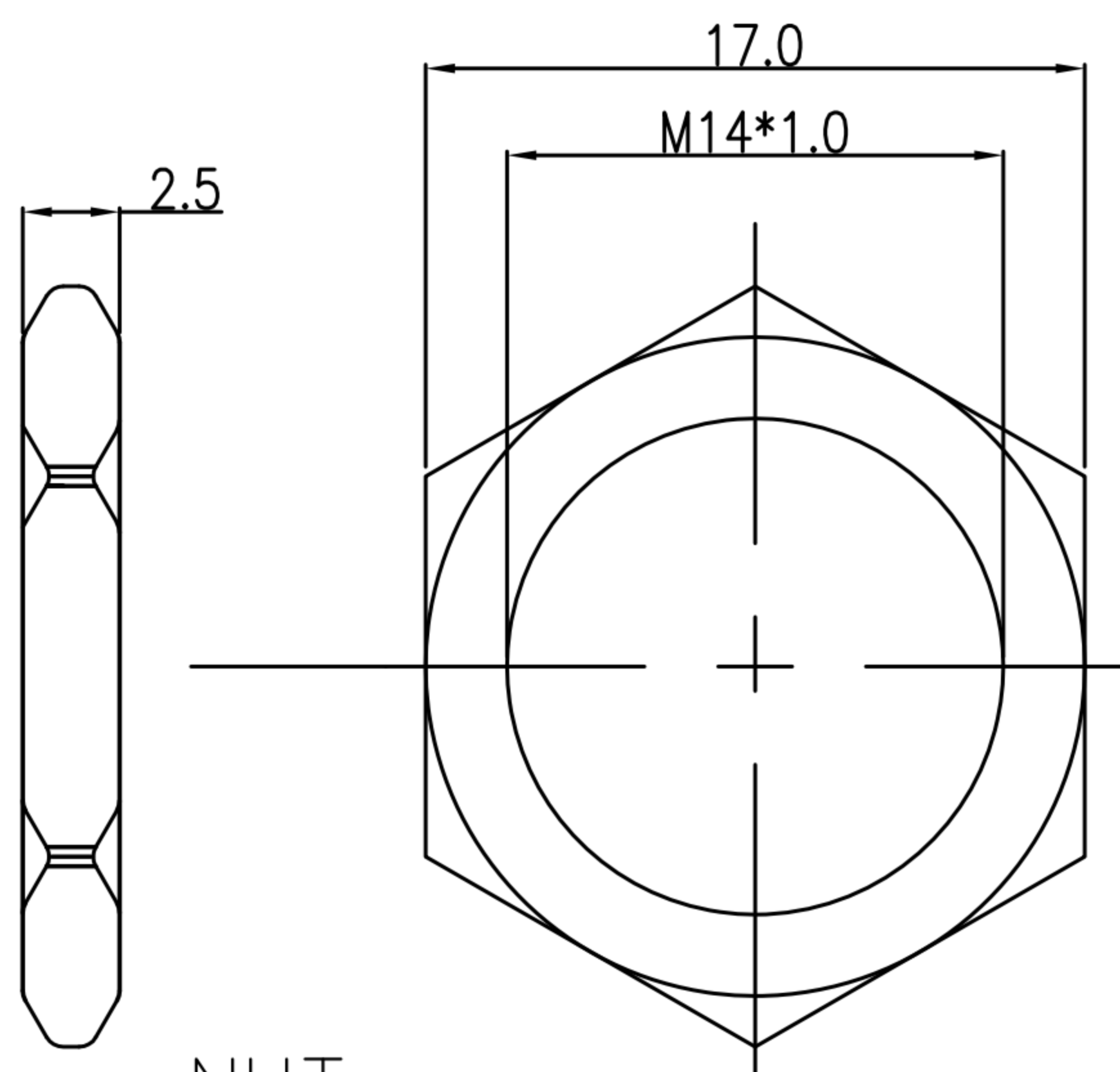
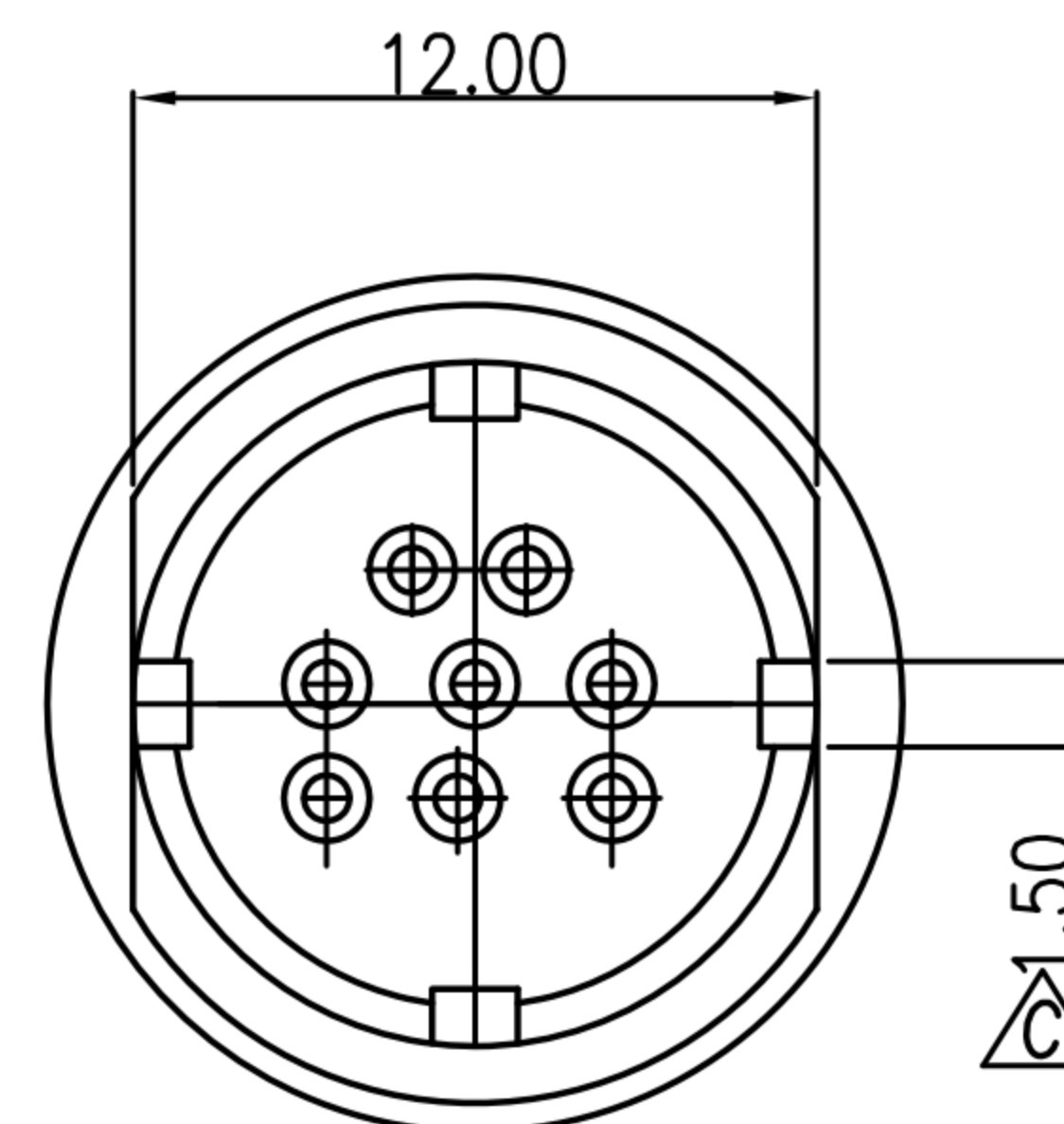
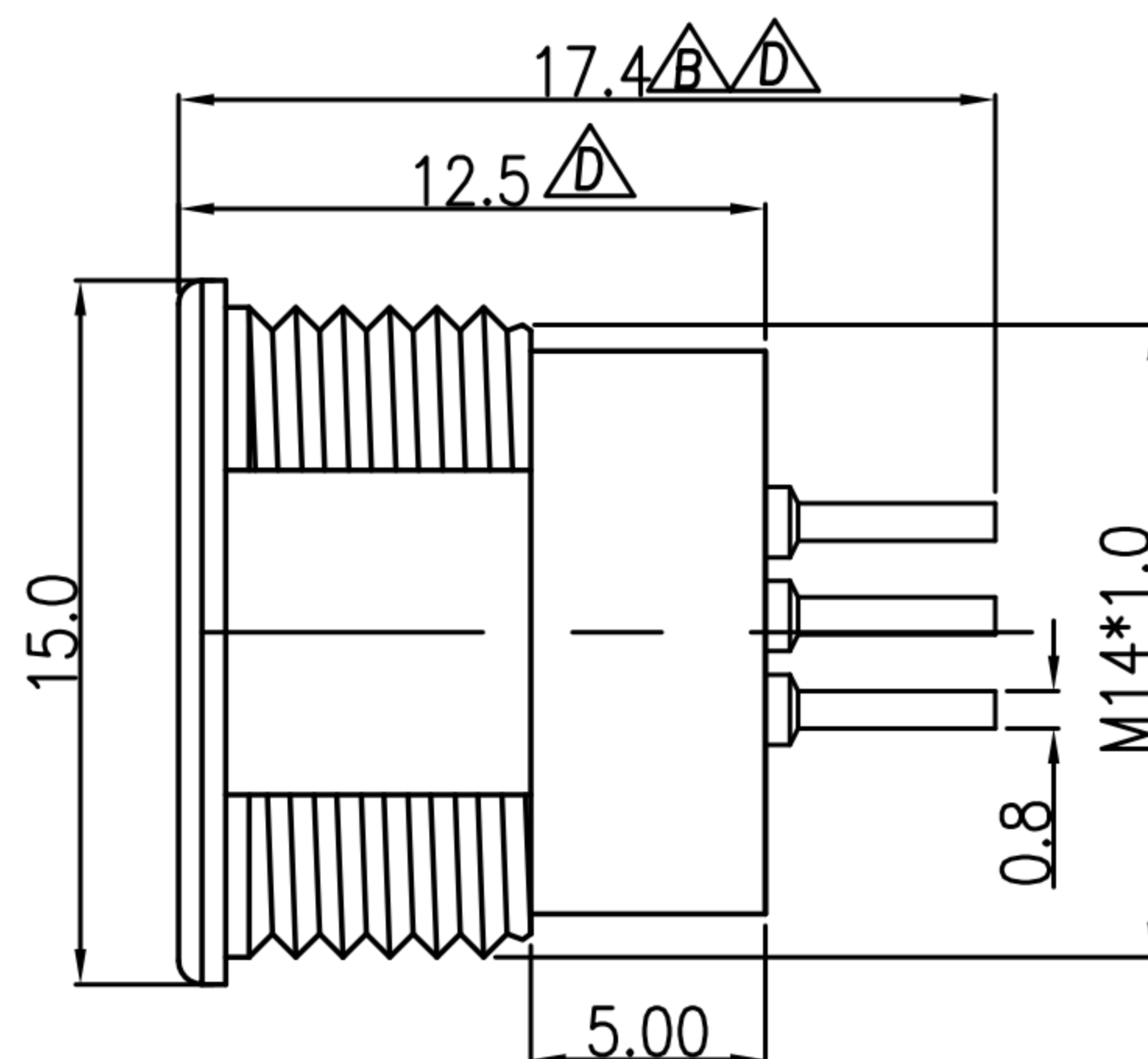
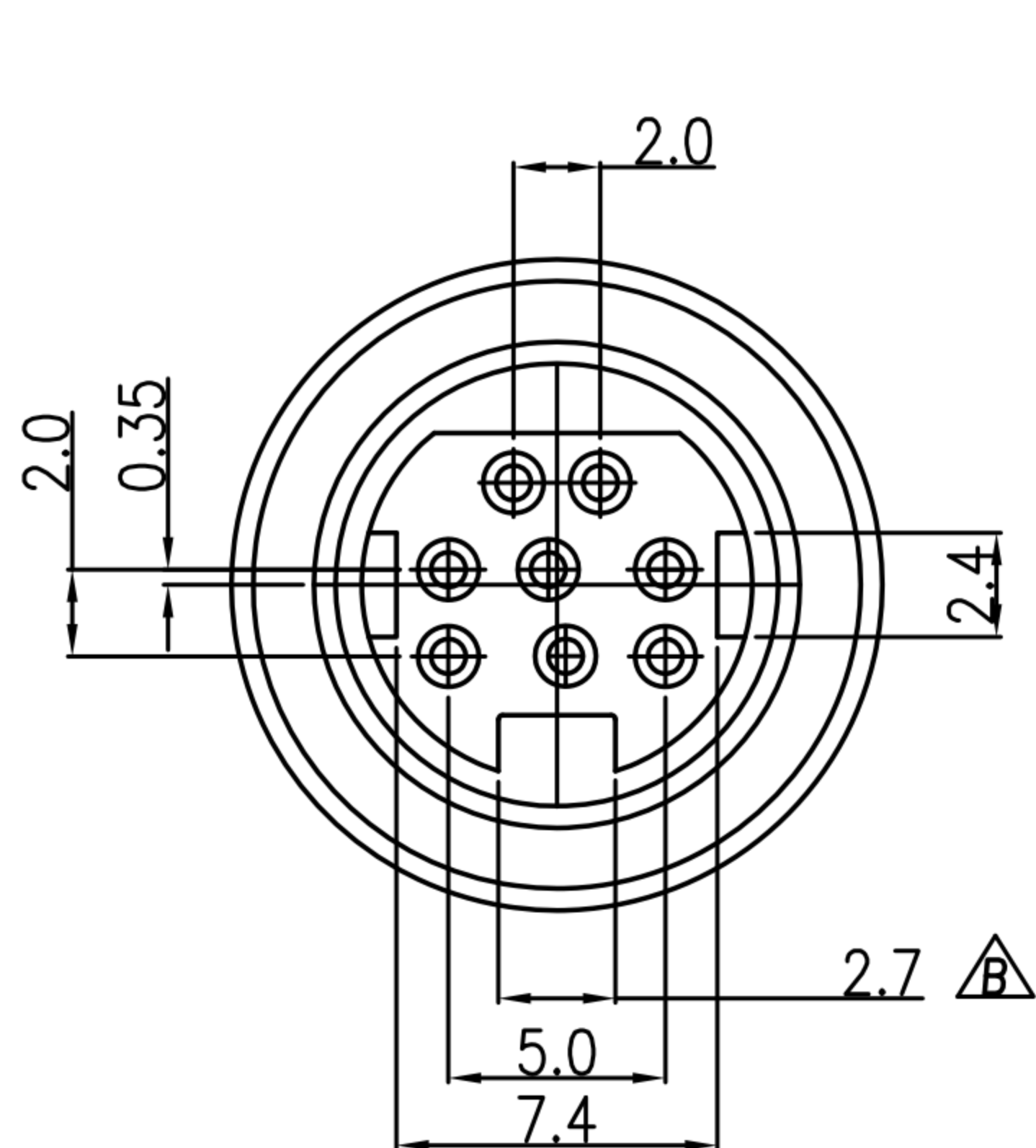
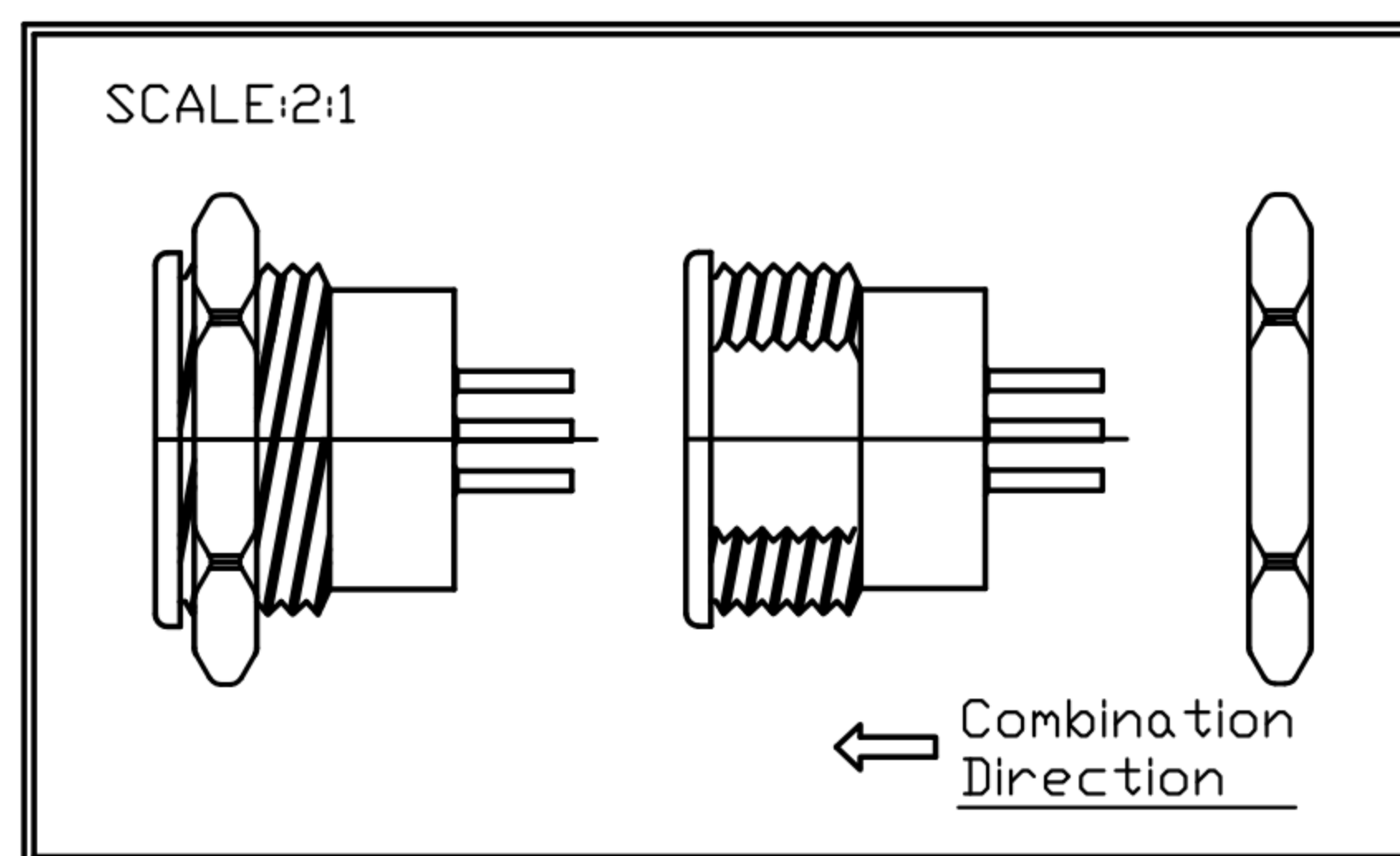


# CUSTOMER DRAWING

REV.	DESCRIPTION	APPROVED BY	DATE	ECN NO.
A	RELEASE	KU	27/03/09"	
B	CHANGE DIM.	Fideo Weng	18/05/09"	ECN-09118
C	增加打點	Emily Suen	02/05/12"	ECN-12007
D	尺寸改變	Emily Suen	14/02/17"	ECN-17001



NUT



- MATERIAL :
  - 1-1. HOUSING : PBT UL94V-0 ; COLOR : BLACK
  - 1-2. CONTACT : PHOSPHOR BRONZE
  - 1-3. SHELL : BRASS
  - 1-4. NUT : BRASS
- FINISH :
  - 2-1. CONTACT : GOLD FLASH PLATED OVER NICKEL
  - 2-2. SHELL : NICKEL PLATED 60u" ~ 100u" OVER ALL
  - 2-3. NUT : NICKEL PLATED 60u" ~ 100u" OVER ALL
- ELETRICAL SPECICATION :
  - 3-1. Rated current : 1A
  - 3-2. Rated voltage : 60V
- Environmental :
  - 4-1. Operation Temperature : -20℃~85℃

DRAWN	Ku Chou	APP'D	Emily Suen	UNIT	mm	TOLERANCE			TITLE	POWER DIN 8(F) LOCK TYPE(ON BOARD)			SHEET
CHK'D	Emily Suen			SCALE	1:1				PART NO.	PD-08F2-02	DWG NO.	QC4072	VERSION