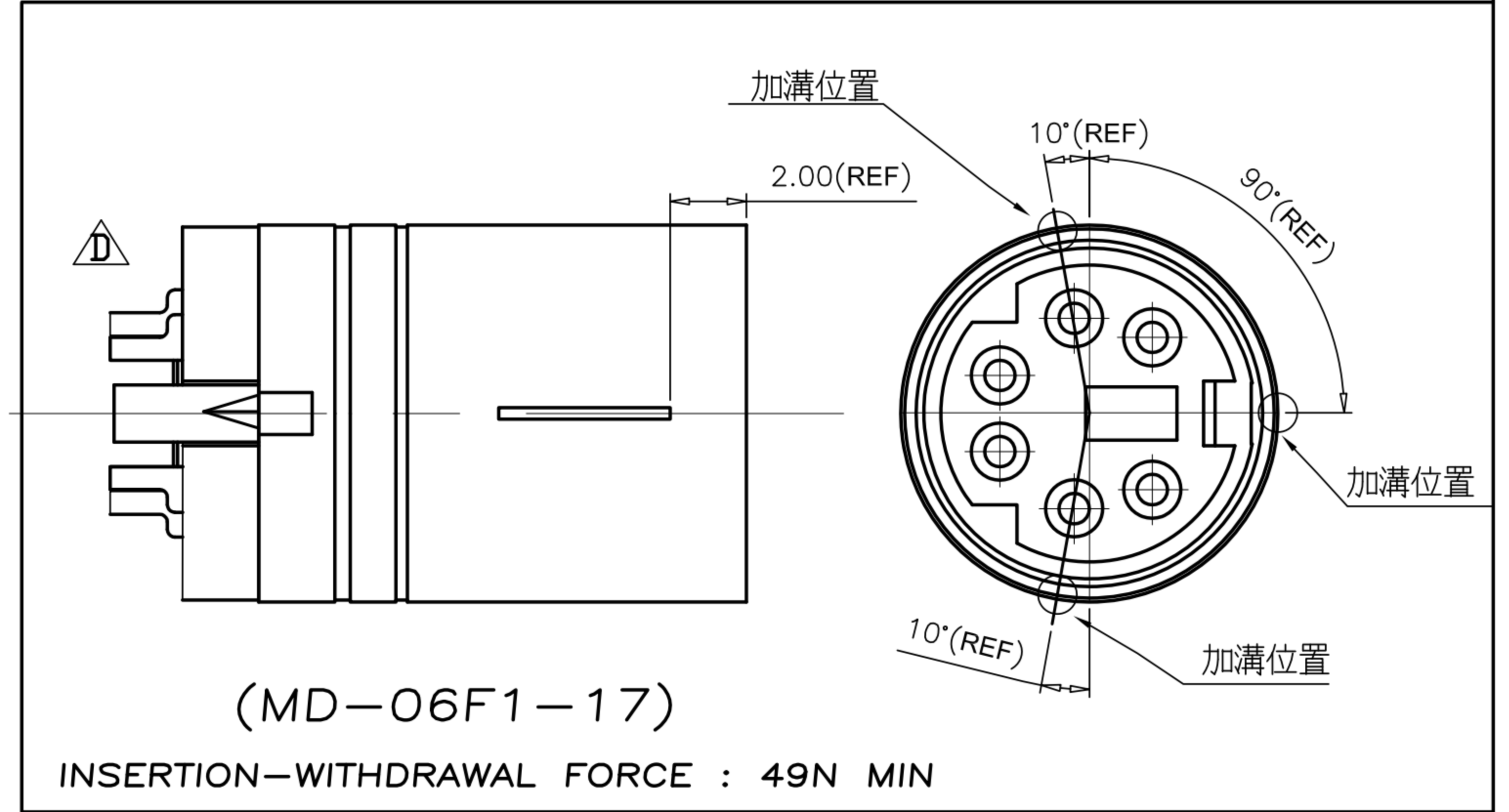
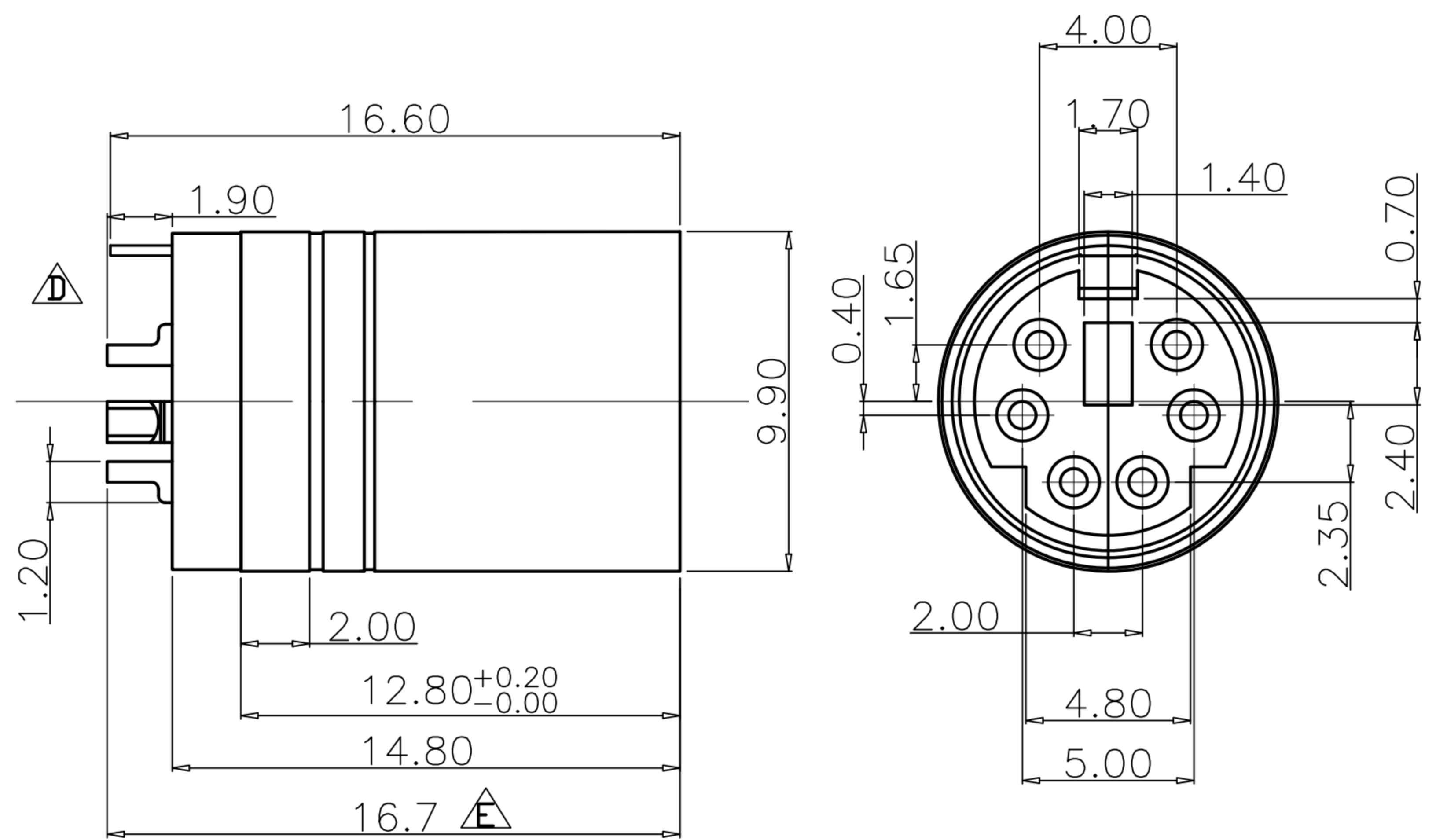


CUSTOMER DRAWING

REV.	DESCRIPTION	APPVL. BY	DATE	ECN NO.
D	端子改杯口	Fido Weng	18/04/13'	ECN13006
E	修改外觀總長	Fido Weng	21/06/13'	
F	變更 SPRING PLATING	Fido Weng	03/12/13'	ECN13022
G	MODIFY TABLE	Fido Weng	16/12/13'	



- MATERIAL :
 - 1-1. HOUSING : THERMOPLASTIC UL94V-0 ; COLOR : BLACK
 - 1-2. CONTACT : PHOSPHOR BRONZE
 - 1-3. SHELL : BRASS.
 - 1-4. SPRING : PHOSPHOR BRONZE
- FINISH :
 - 2-1. CONTACT : SEE TABEL A
UNDER PLATE : NICKEL
SOLDER AREA : MATTE TIN 50u"
 - 2-2. SHELL : NICKEL 60u"
 - 2-3. SPRING : SILVER 5u" MINIMUM
- ELECTRICAL SPECIFICATION :
 - 3-1. Rated current : 2A
 - 3-1. Rated Voltage : 12V
- Environmental :
 - 4-1. Operation Temperature : -20℃~85℃

TABLE A

P/N	CONTACT AREA
MD-06F1-17	SILVER 30 MICRO INCHES MIN
MD-06F1-07	GOLD 30 MICRO INCHES MIN
MD-06F1-06	SILVER 30 MICRO INCHES MIN
MD-06F1-04	GOLD FLASH / 半金鍍

DRAW	Ting	APPVL	Emily Suen	UNIT	mm	TOLERANCE	.x ±0.20 .xx ±0.10 .xxx ±0.05 .xxxx ±0.03 ANGULA ±1°	TITLE	MINI DIN 6PIN (F)			SHEET	1/1
CHECK	Emily Suen			SCALE	1:1			PART NO.	SEE TABLE A	DWG NO.	QC0010	VERSION	G
						广东科斯达电子科技有限公司 GUANG DONG KE SI DA ELECTRONIC TECHNOLOGY CO., LTD.							