

CUSTOMER DRAWING

REV.	DESCRIPTION	APPVL. BY	DATE	ECN NO.
A	RELEASE & DIM change	Fido Weng	18/03/09*	R-09015
B	Change Contact Plated	Fido Weng	31/03/09*	ECN09041
C				

步驟一:

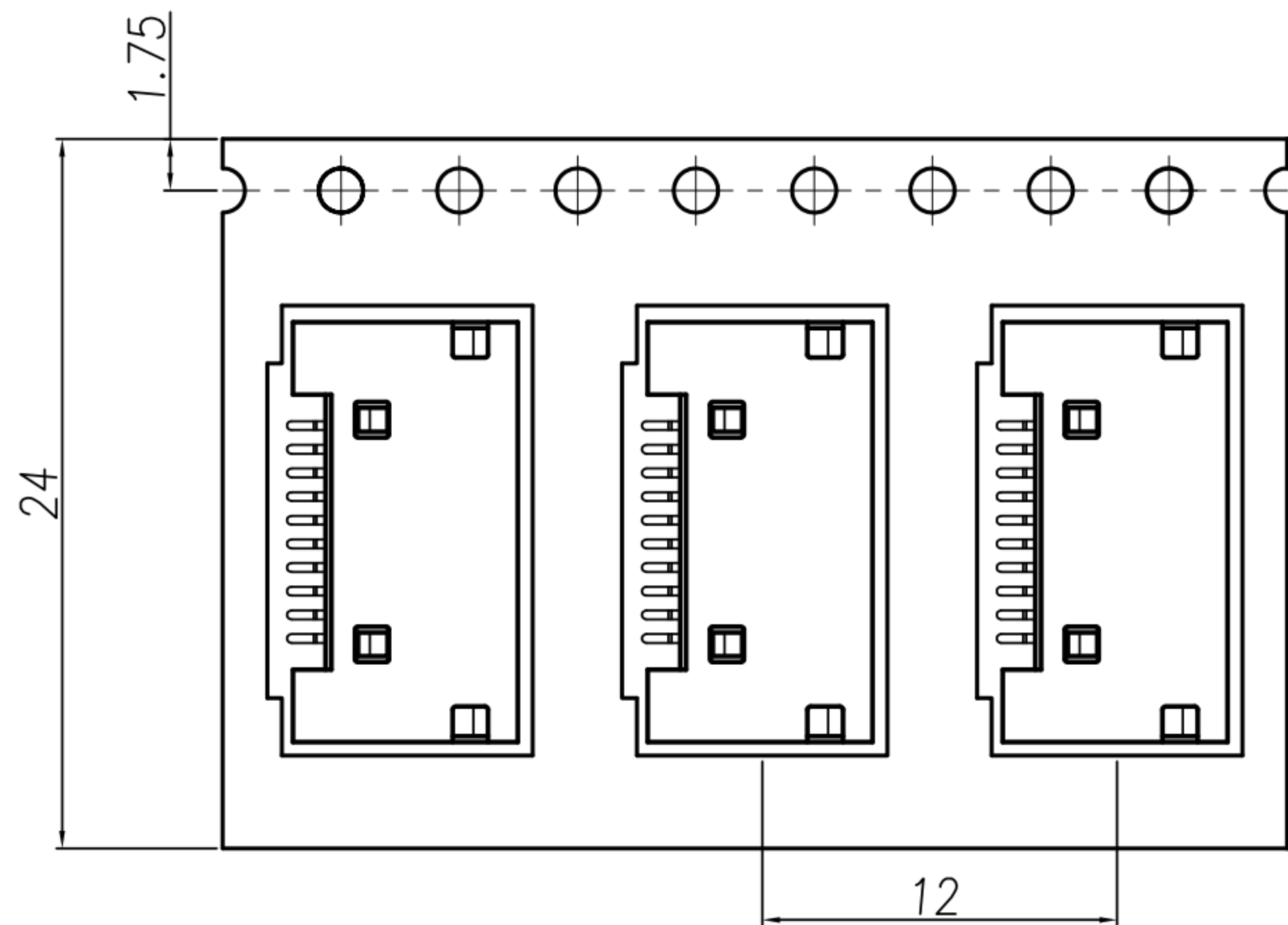
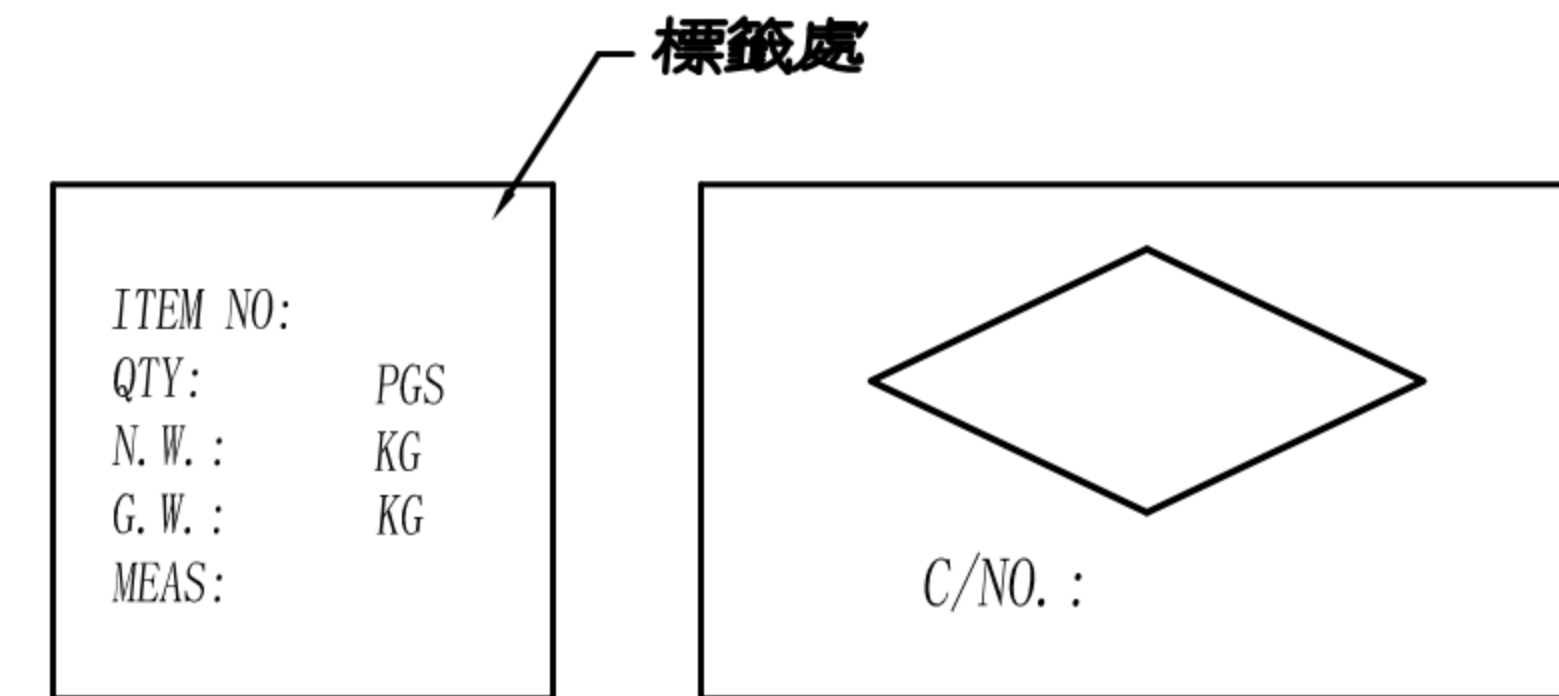
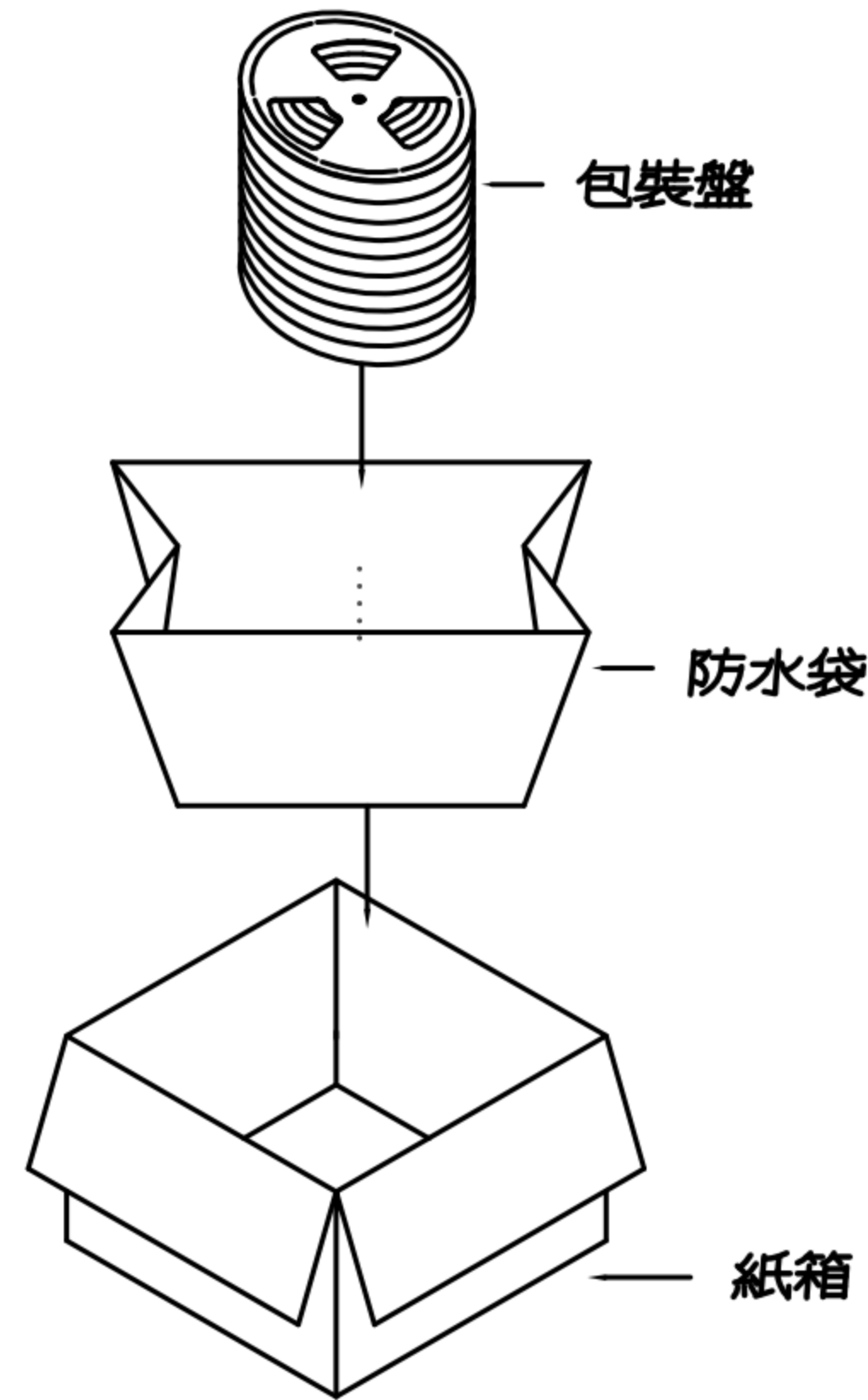
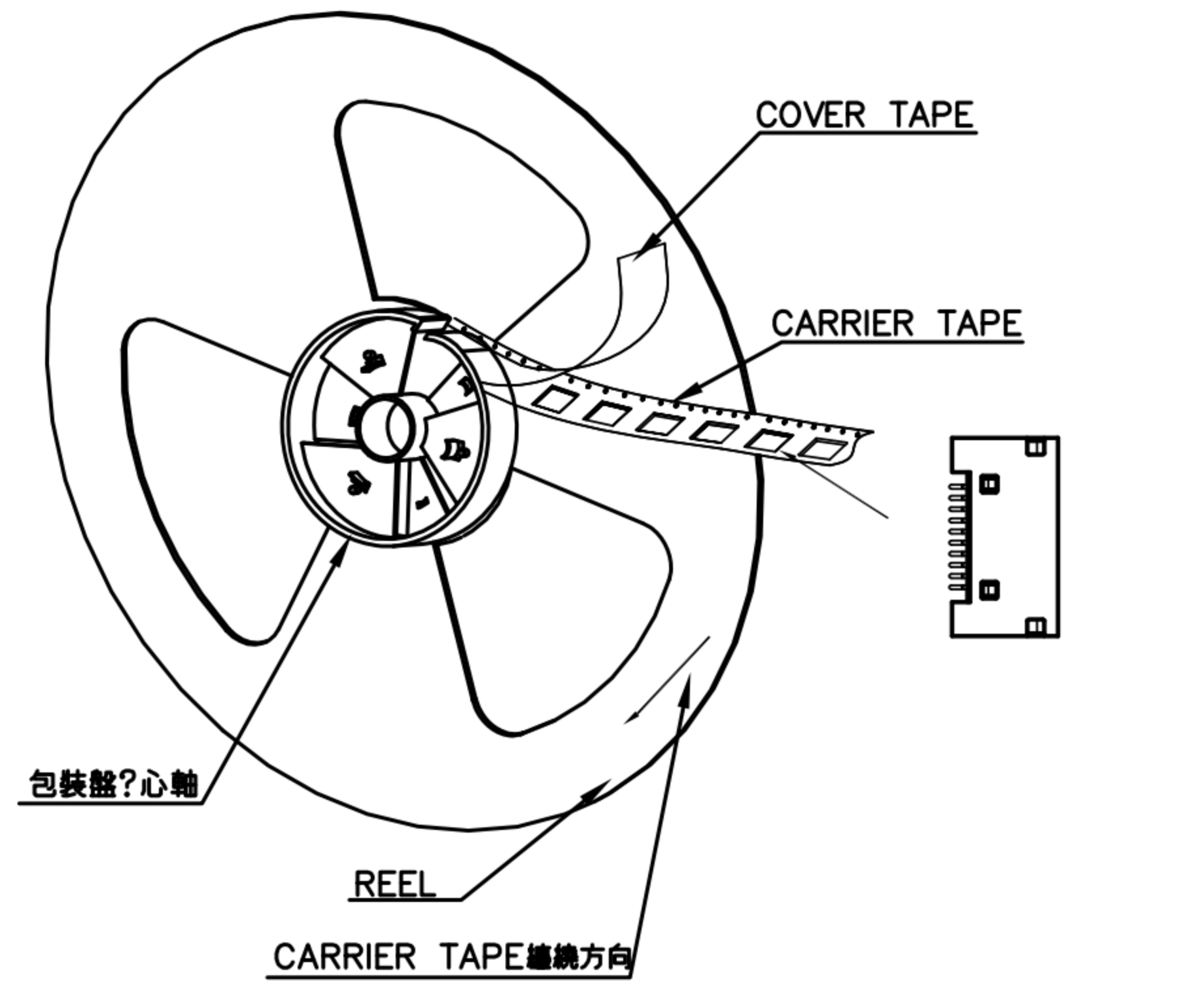
1. 將成品一一放入包裝盤內,依同一方向置入.
2. 包裝方式,如圖所示.
3. 一個包裝盤內放1000pcs.

步驟二:

1. 一個紙箱可以裝10個包裝盤.
2. 每盤1000pcs,每箱10000pcs.
3. 將包裝盤放入防水袋中,包裝完後再封箱.

步驟三:

1. 用膠帶將紙箱封實.
2. 將標籤貼於紙箱上.



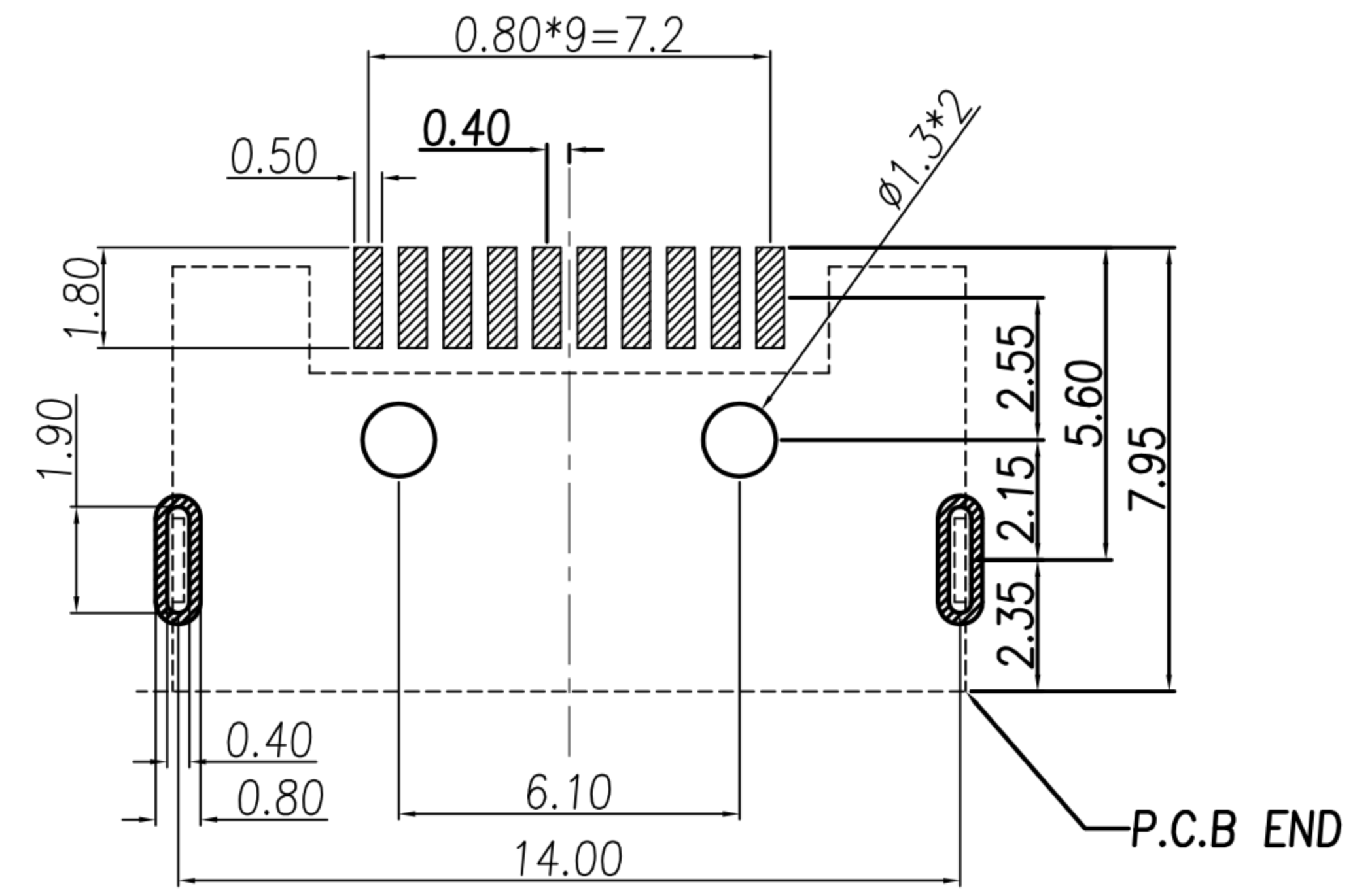
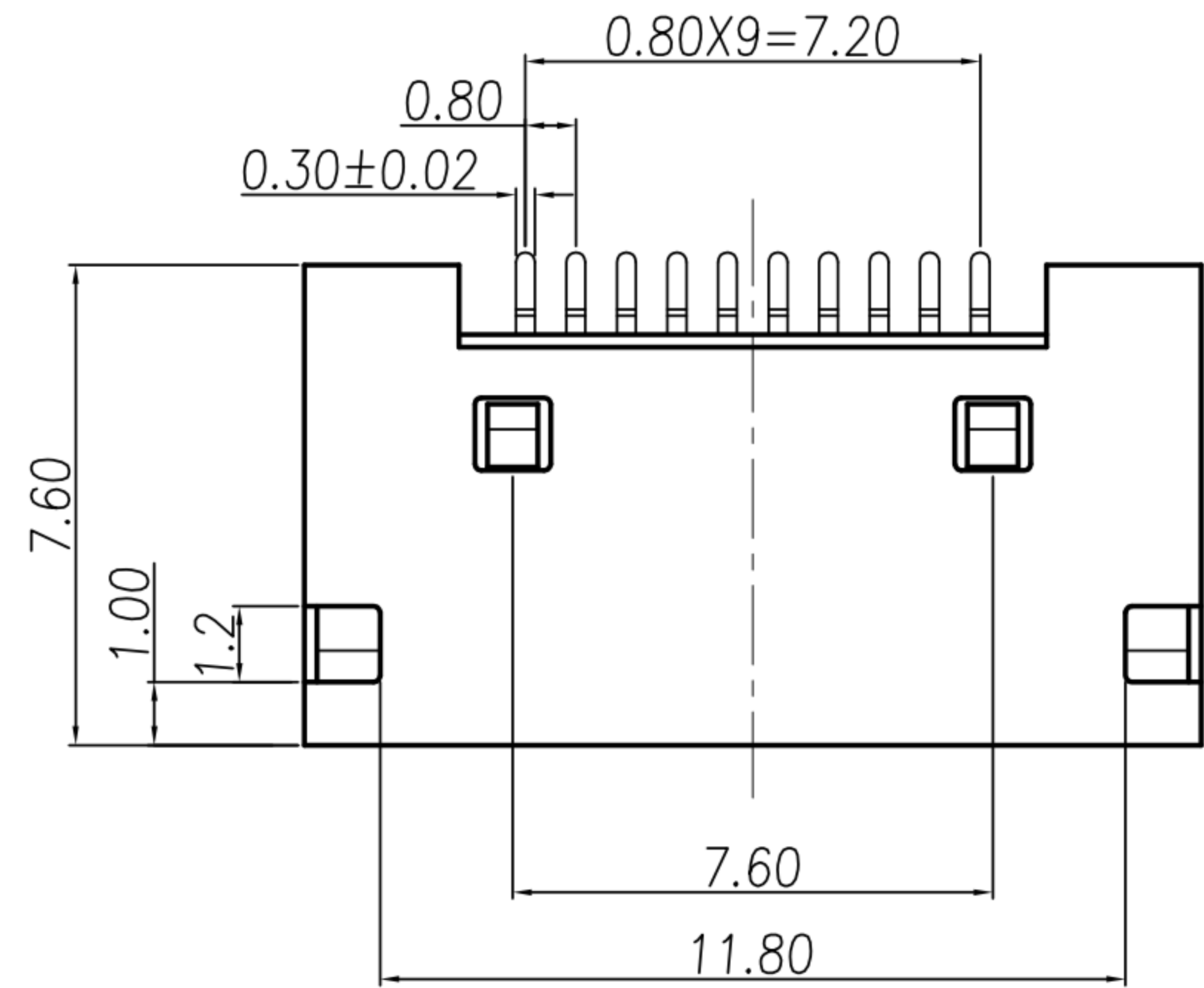
NOTE:

1. 若有未裝滿之零數箱,必須以緩衝材塞滿.
2. 在搬運過程中要輕拿輕放.
3. 載運輸中不可堆放過多,不可有重壓現象.
4. 在裝滿產品後,必須空留帶前和帶後15格以上,然後用紙膠布貼上.
5. 上帶在貼下帶時必須平整,且黏貼處不要出現氣泡.

DRAWN	Mark Kao	APP'D	Ku Chou	UNIT	mm	TOLERANCE			TITLE	PCMCIA 10(F) 板 SMT			SHEET	2/2
CHK'D	Emily Suen			SCALE	1:1	.x ±0.20 .xx ±0.10 .xxx ±0.05 .xxxx ±0.03 ANGULA ±1°			PART NO.	PC-10F4-02	DWG NO.	QC1082	VERSION	B

CUSTOMER DRAWING

REV.	DESCRIPTION	APPVL. BY	DATE	ECN NO.
A	RELEASE & DIM change	Fido Weng	18/03/09*	R-09015
B	Change Contact Plated	Fido Weng	31/03/09*	ECN09041
C				



Recommend P.C.B Layout Tolerance ±0.05

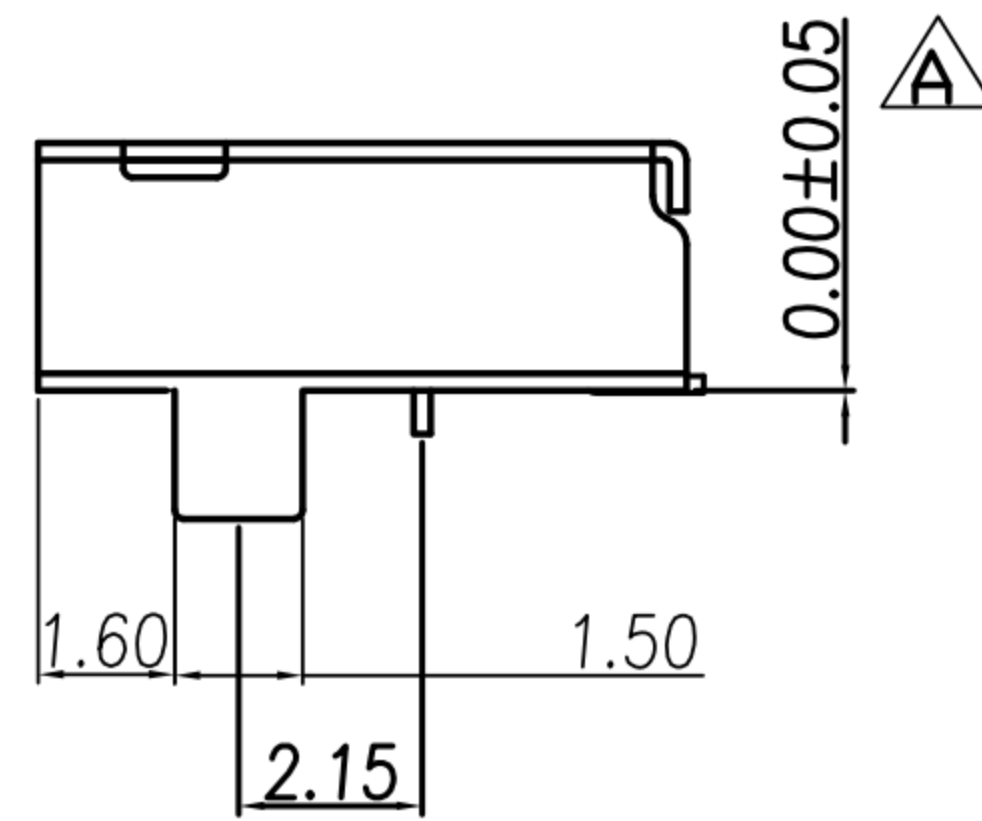
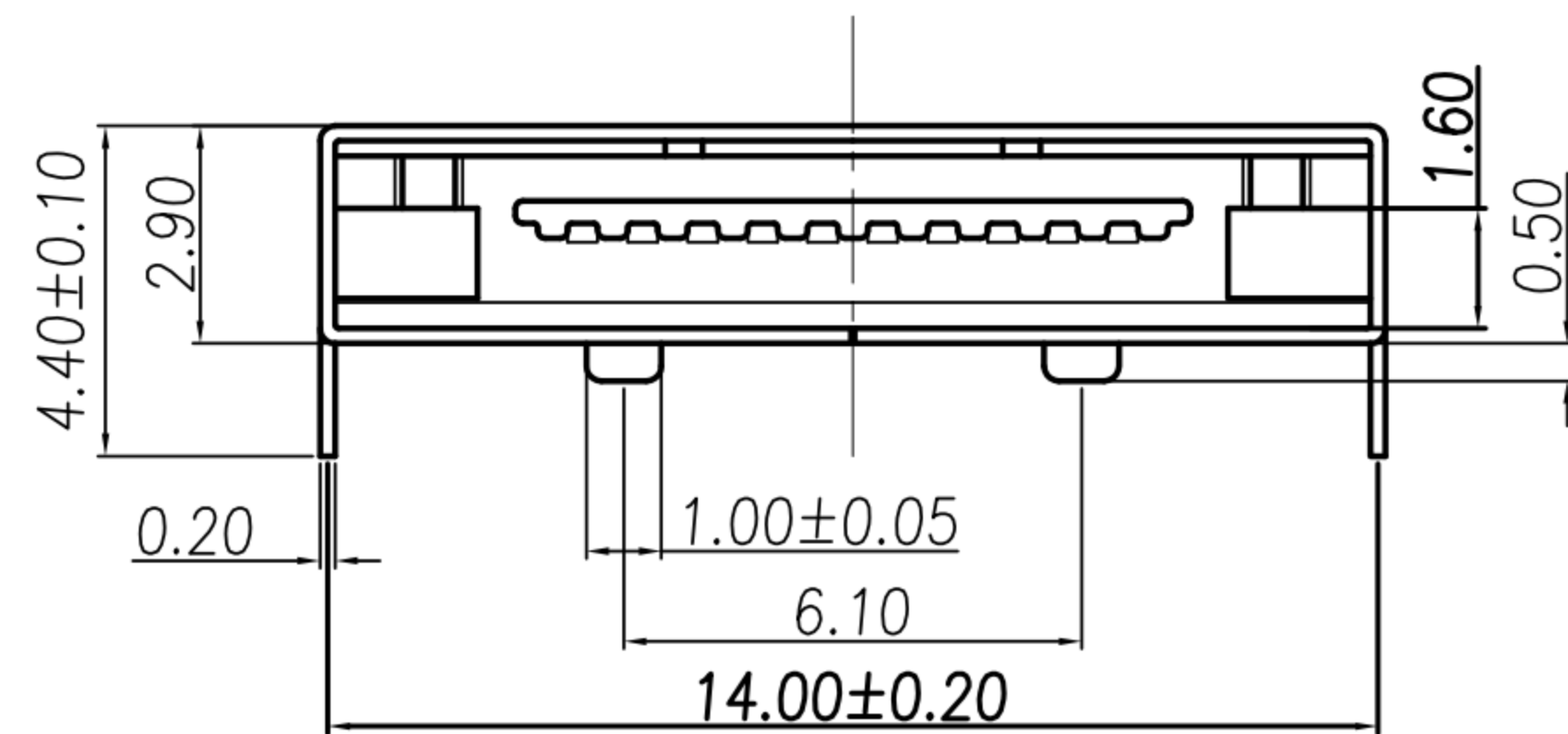
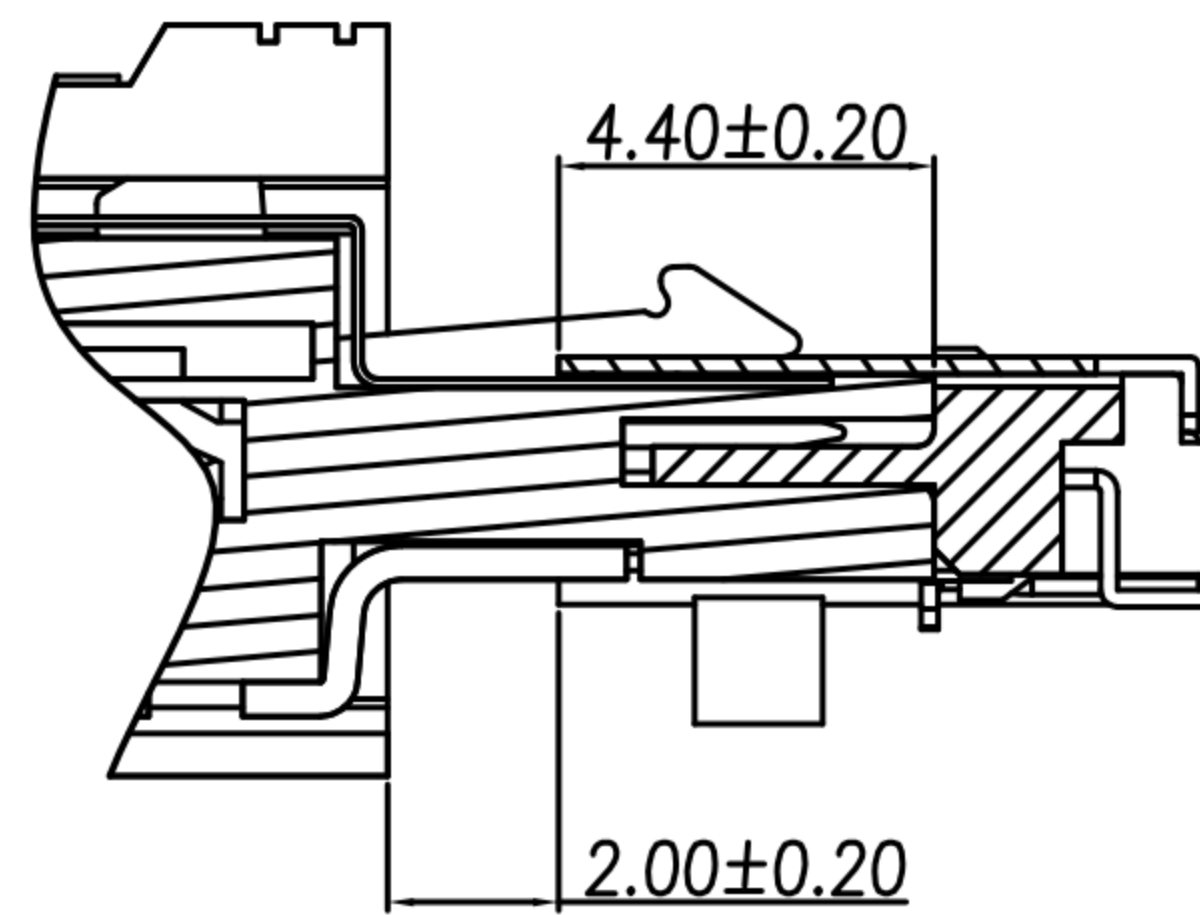
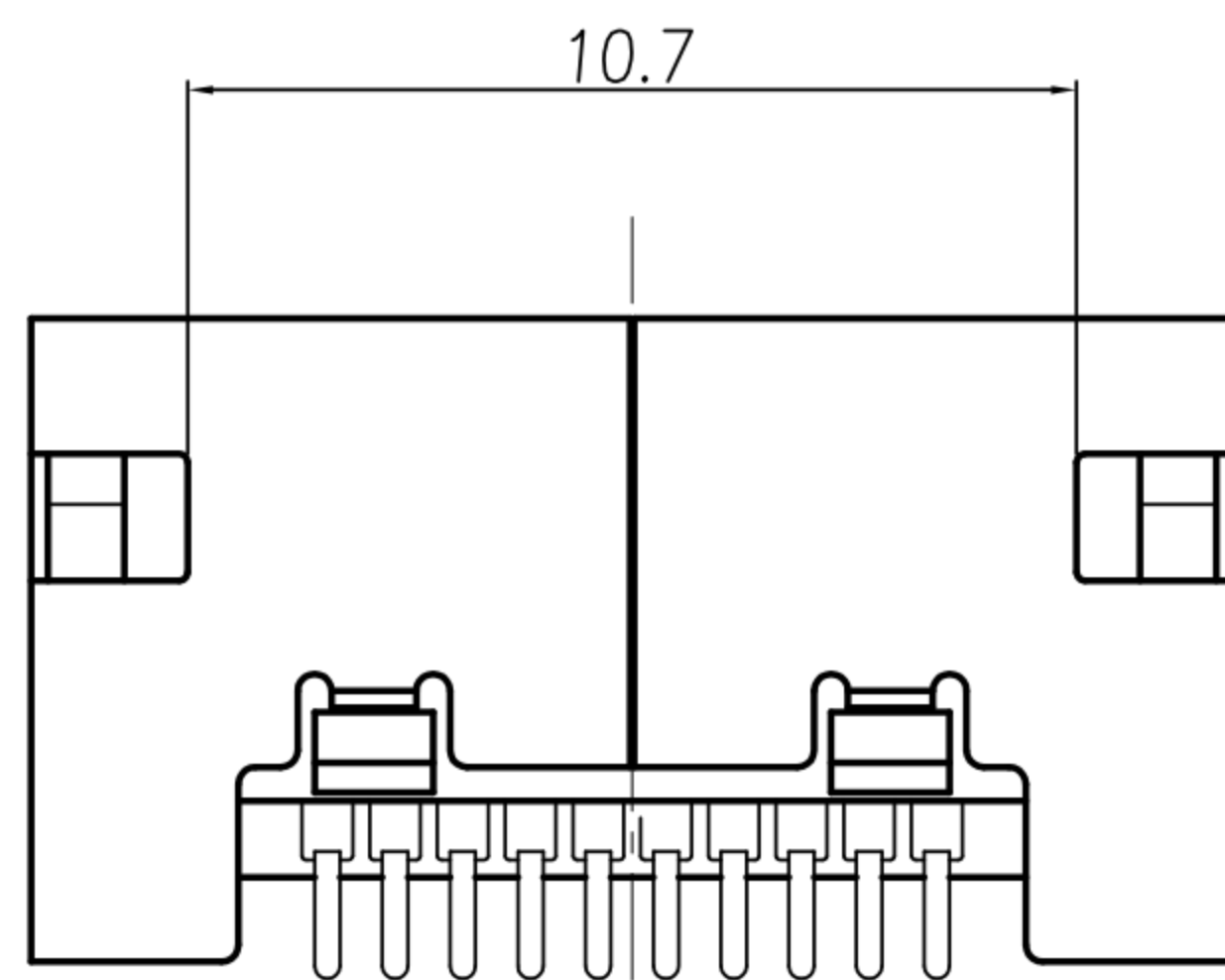


TABLE A

PC-10F4-09	GOLD FLASH
PC-10F4-02	GOLD 10u" MIN.
P/N	CONTACT AREA FINISH



ASSEMBLY

- MATERIAL :
 - 1-1. HOUSING : LCP UL94V-0 ; COLOR : BLACK
 - 1-2. CONTACT : PHOSPHOR BRONZE
 - 1-3. SHELL : STAINLESS
- FINISH :
 - 2-1. CONTACT : B
CONTACT AREA : SEE TABLE A
SOLDER AREA : BRIGHT TIN
UNDER PLATE : NICKEL
 - 2-2. SHELL : NICKEL PLATED
- ELETRICAL SPECICATION :
 - 3-1. RATED CURRENT : 0.5A
 - 3-2. RATED VOLTAGE : AC 30Vr.m.s
- ENVIRONMENTAL :
 - 4-1. OPERATION TEMPERATURE : -25℃~75℃

DRAWN	Mark Kao	APP'D	Ku Chou	UNIT	mm	TOLERANCE		广东科斯达电子科技有限公司 GUANG DONG KE SI DA ELECTRONIC TECHNOLOGY CO., LTD.	TITLE	PCMCIA 10(F) SMT			SHEET
CHK'D	Emily Suen			SCALE	1:1	.x ±0.20 .xx ±0.10 .xxx ±0.05 .xxxx ±0.03 ANGULA ±1°			PART NO.	SEE TABLE A	DWG NO.	QC1082	VERSION