

# CUSTOMER DRAWING

REV.	DESCRIPTION	APPL. BY	DATE	ECN NO.
A				
B				
C				

### 步驟一:

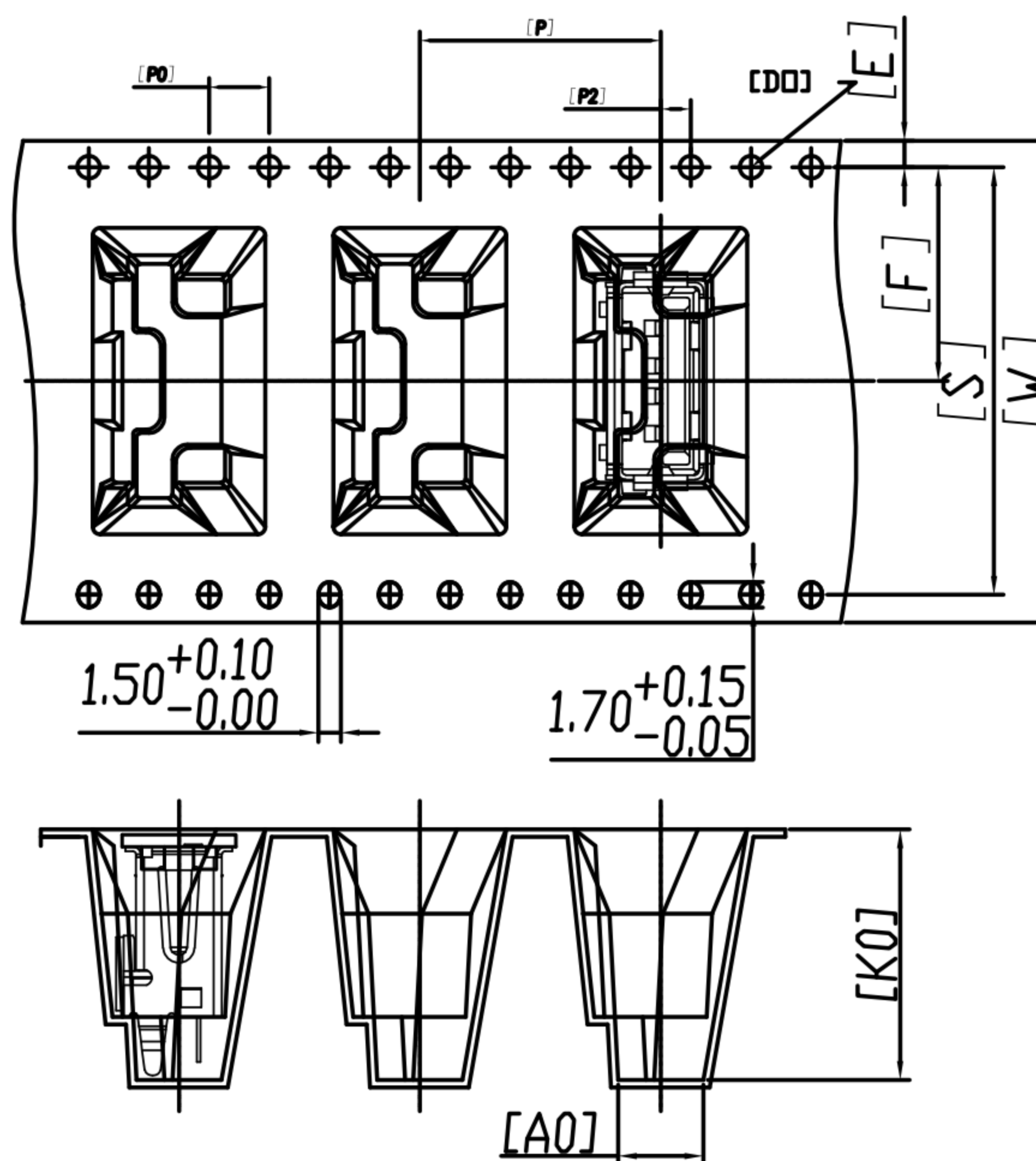
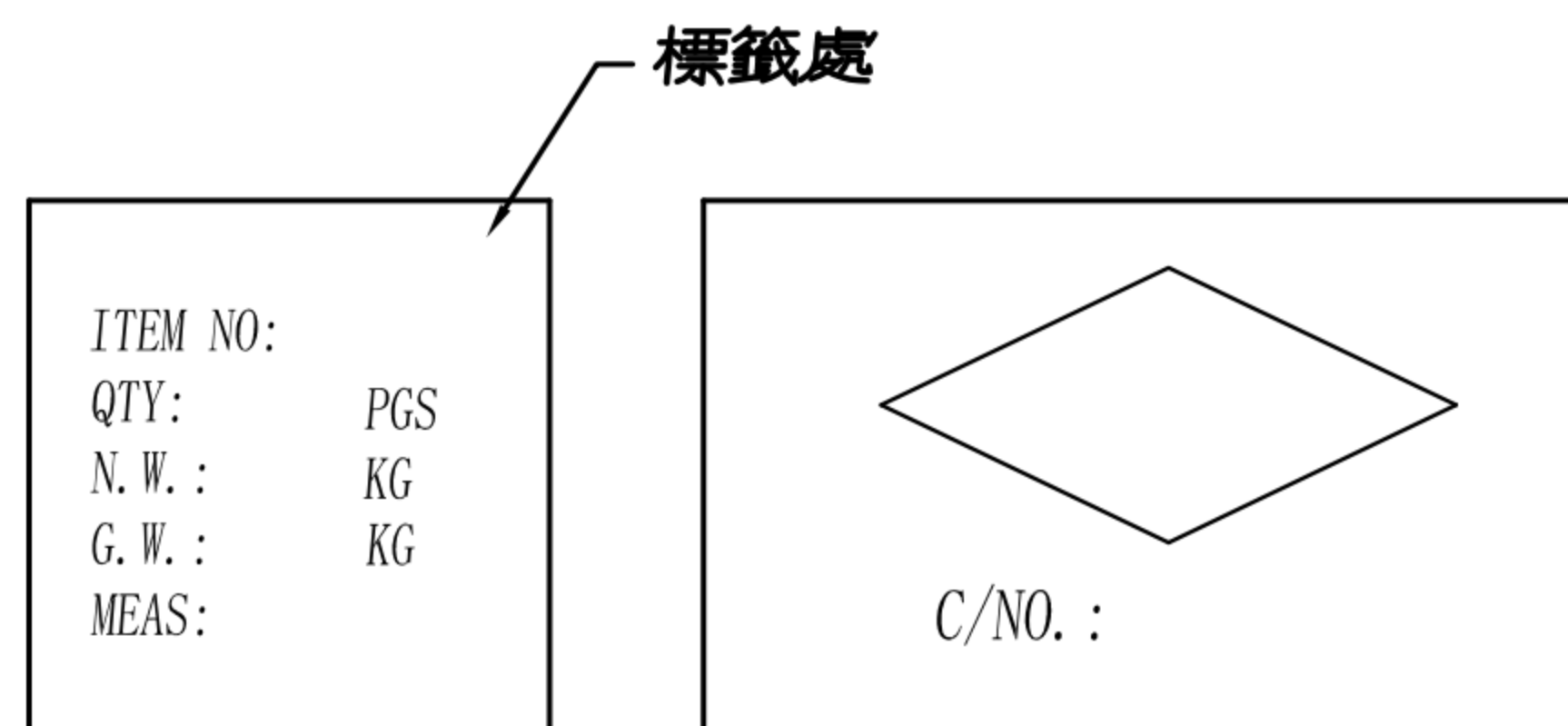
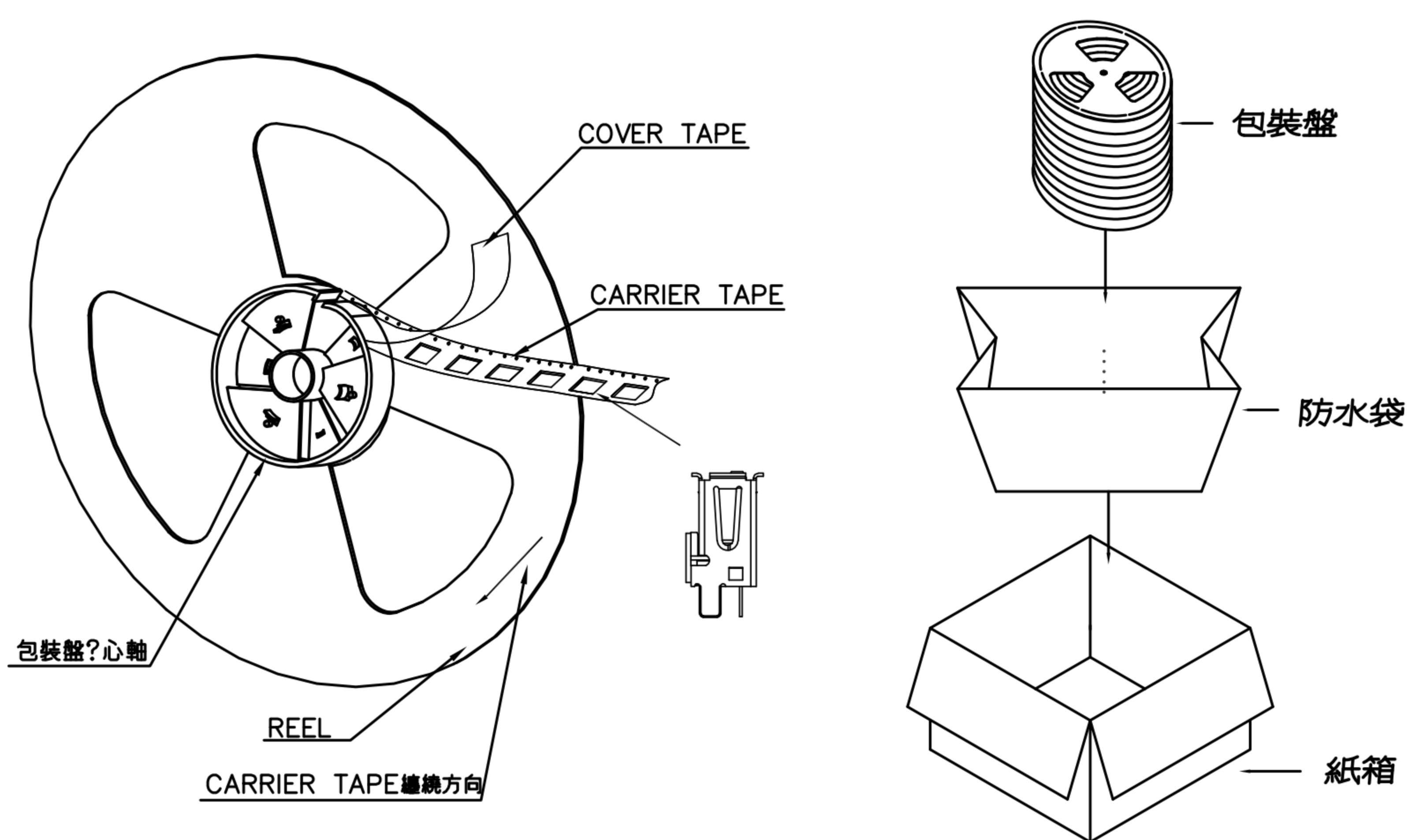
- 將成品一一放入包裝盤內,依同一方向置入.
- 包裝方式,如圖所示.
- 一個包裝盤內放200pcs.

### 步驟二:

- 一個紙箱可以裝10個包裝盤.
- 每盤200pcs,每箱2000pcs.
- 將包裝盤放入防水袋中,包裝完後再封箱.

### 步驟三:

- 用膠帶將紙箱封實.
- 將標籤貼於紙箱上.



ITEM	SPEC
W	32.00 <sup>+0.30</sup> / <sub>-0.30</sub>
Ao	5.66 <sup>+0.10</sup> / <sub>-0.10</sub>
Bo	15.56 <sup>+0.10</sup> / <sub>-0.10</sub>
Ko	16.65 <sup>+0.10</sup> / <sub>-0.10</sub>
P	16.00 <sup>+0.10</sup> / <sub>-0.10</sub>
F	14.20 <sup>+0.10</sup> / <sub>-0.10</sub>
E	1.75 <sup>+0.10</sup> / <sub>-0.10</sub>
D0	1.50 <sup>+0.10</sup> / <sub>-0.00</sub>
Po	4.00 <sup>+0.10</sup> / <sub>-0.10</sub>
P2	2.00 <sup>+0.10</sup> / <sub>-0.10</sub>
t	0.50 <sup>+0.05</sup> / <sub>-0.05</sub>

### NOTE:

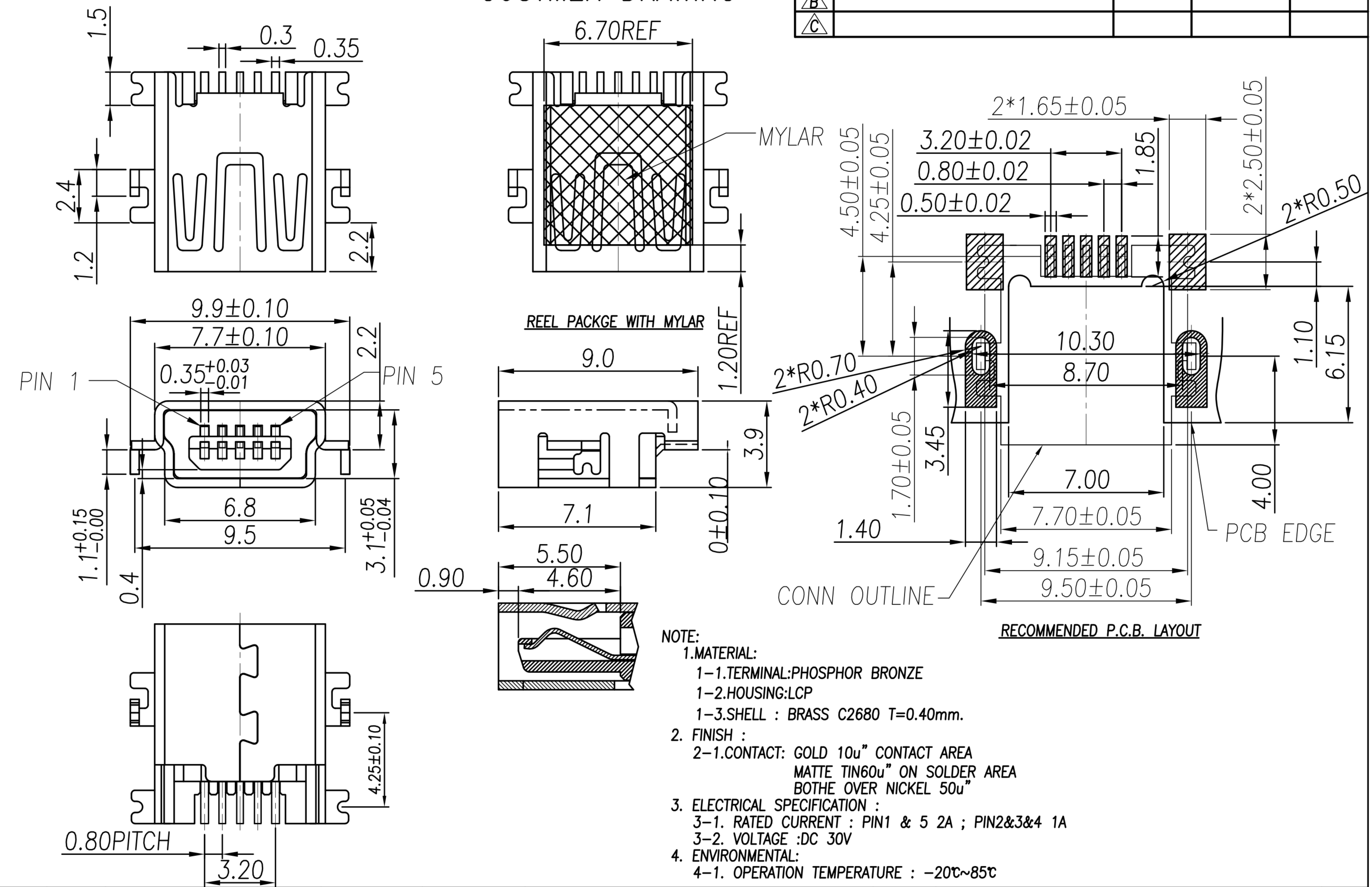
- 若有未裝滿之零數箱,必須以緩衝材塞滿.
- 在搬運過程中要輕拿輕放.
- 載運輸中不可堆放過多,不可有重壓現象.
- 在裝滿產品後,必須空留帶前和帶後15格以上,然後用紙膠布貼上.
- 上帶在貼下帶時必須平整,且黏貼處不要出現氣泡.

DRAWN	Mark Kao	APP'D	Ku Chou	UNIT	mm	TOLERANCE		广东科斯达电子科技有限公司 GUANG DONG KE SI DA ELECTRONIC TECHNOLOGY CO., LTD.	TITLE	USB 4P A (F)180度 DIP直腳			SHEET	2
CHK'D	Emily Suen			SCALE	1:1	.x ±0.20 .xx ±0.10 .xxx ±0.05 .xxxx ±0.03 ANGULA ±1°			PART NO.	US-04F3-29-11	DWG NO.	QC7673	VERSION	A

A B C D E F

# CUSTOMER DRAWING

REV.	DESCRIPTION	APPL. BY	DATE	ECN NO.
A	RELEASE	Fido Wang	23/12/08*	ECN-08018
B				
C				



- NOTE:**
- MATERIAL:**
    - 1-1.TERMINAL:PHOSPHOR BRONZE
    - 1-2.HOUSING:LCP
    - 1-3.SHELL : BRASS C2680 T=0.40mm.
  - FINISH :**
    - 2-1.CONTACT: GOLD 10u" CONTACT AREA
    - MATTE TIN60u" ON SOLDER AREA
    - BOTHE OVER NICKEL 50u"
  - ELECTRICAL SPECIFICATION :**
    - 3-1. RATED CURRENT : PIN1 & 5 2A ; PIN2&3&4 1A
    - 3-2. VOLTAGE :DC 30V
  - ENVIRONMENTAL:**
    - 4-1. OPERATION TEMPERATURE : -20℃~85℃

DRAWN	Jen Xie	APP'D	Emily Suen	UNIT	mm	TOLERANCE		广东科斯达电子科技有限公司 GUANG DONG KE SI DA ELECTRONIC TECHNOLOGY CO., LTD.	TITLE	Mini Usb 5P(F) 破板式(贴片)端子(PIN1 PIN5 2A)			SHEET	1/2
CHK'D	Emily Suen			SCALE	1:1	.x ±0.20 .xx ±0.10 .xxx ±0.05 .xxxx ±0.03 ANGULA ±1'			PART NO.	MU-05F2-08	DWG NO.	QC3817	VERSION	A