

# CUSTOMER DRAWING

REV.	DESCRIPTION	APPROVED BY	DATE	ECN NO.
A	RELEASE	Yeh Chou	2017/08/16	
B				
C				

**步驟一:**

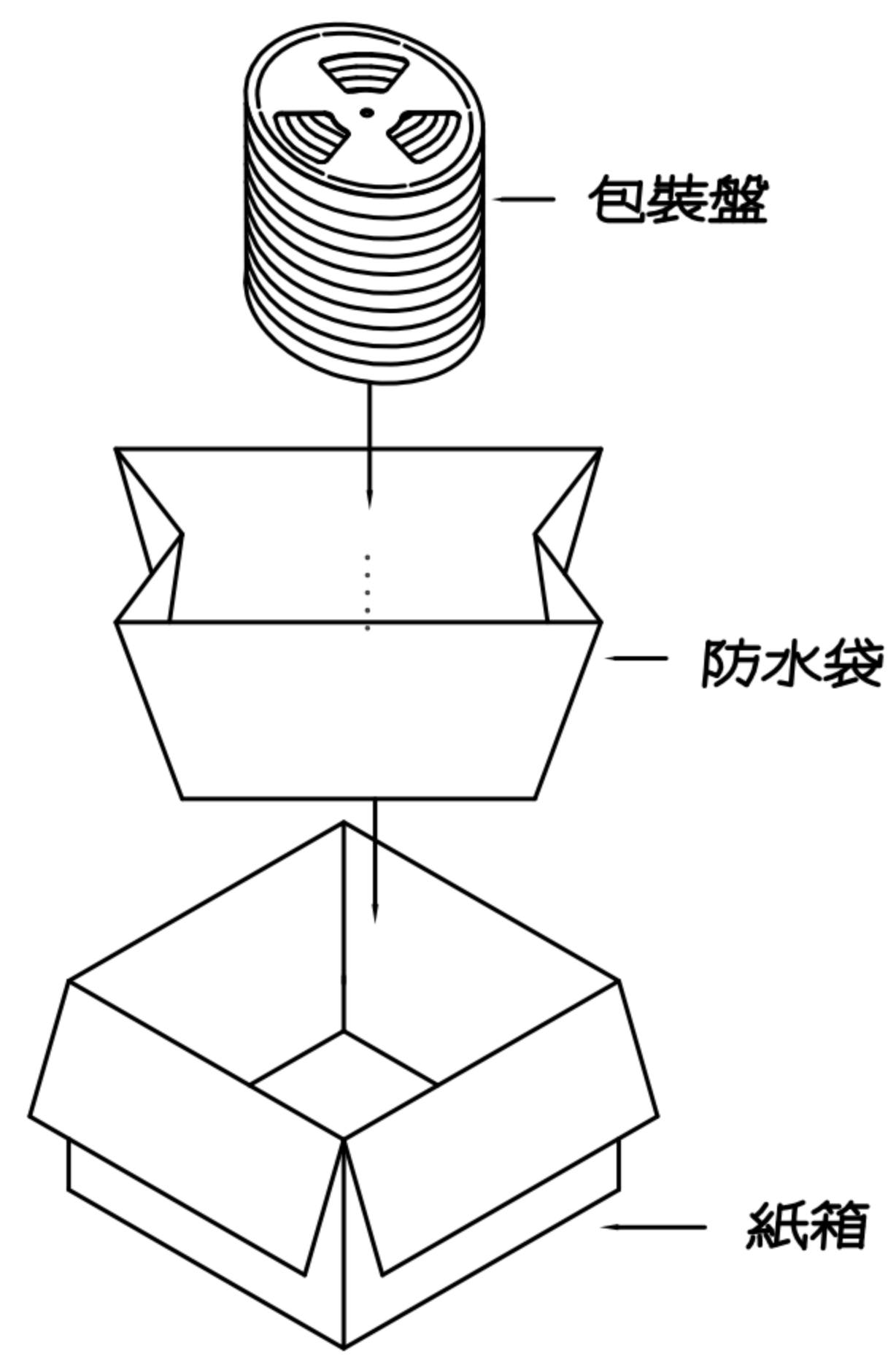
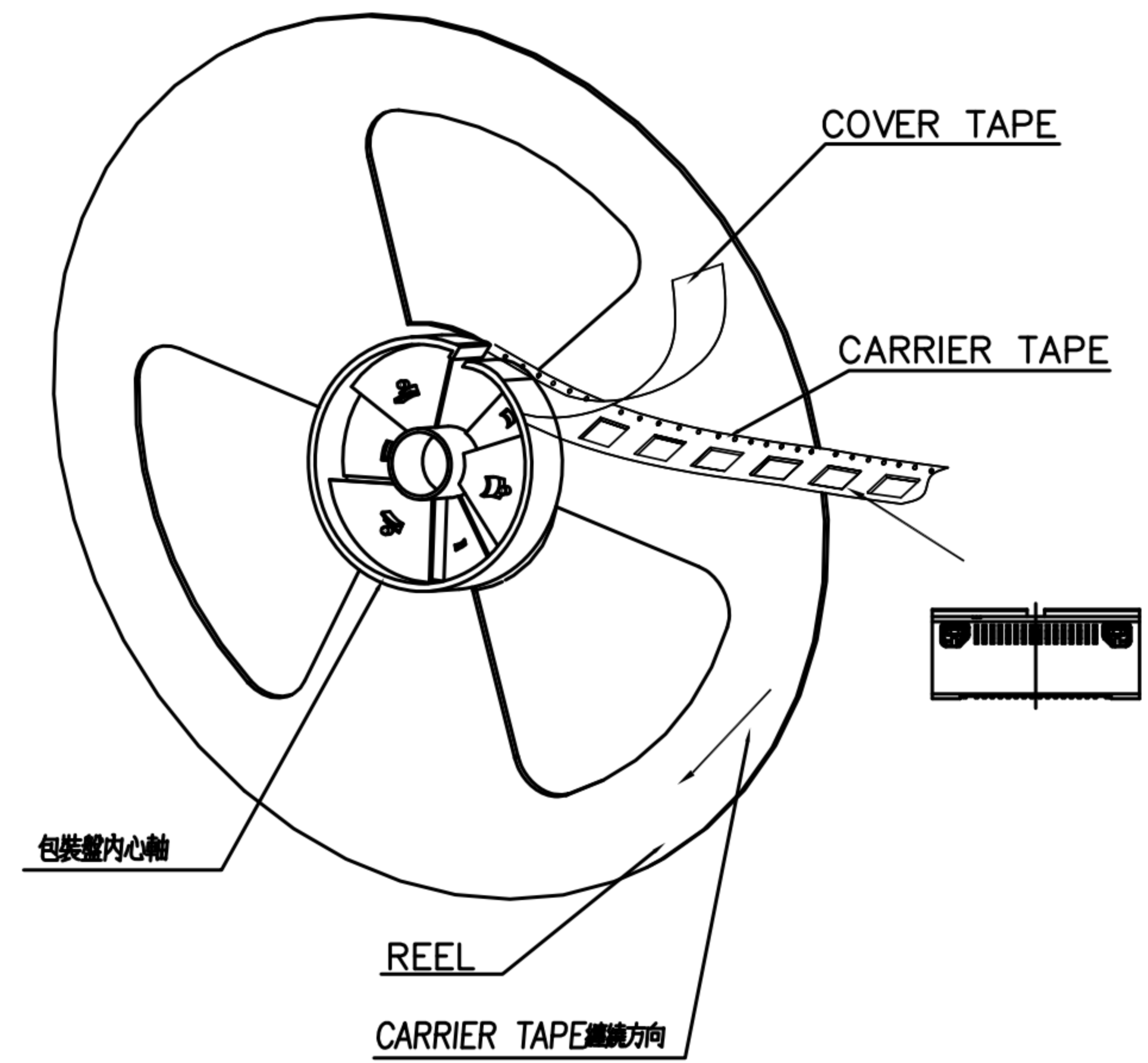
1. 將成品一一放入包裝盤內,依同一方向置入.
2. 包裝方式,如圖所示.
3. 一個包裝盤內放400pcs.

**步驟二:**

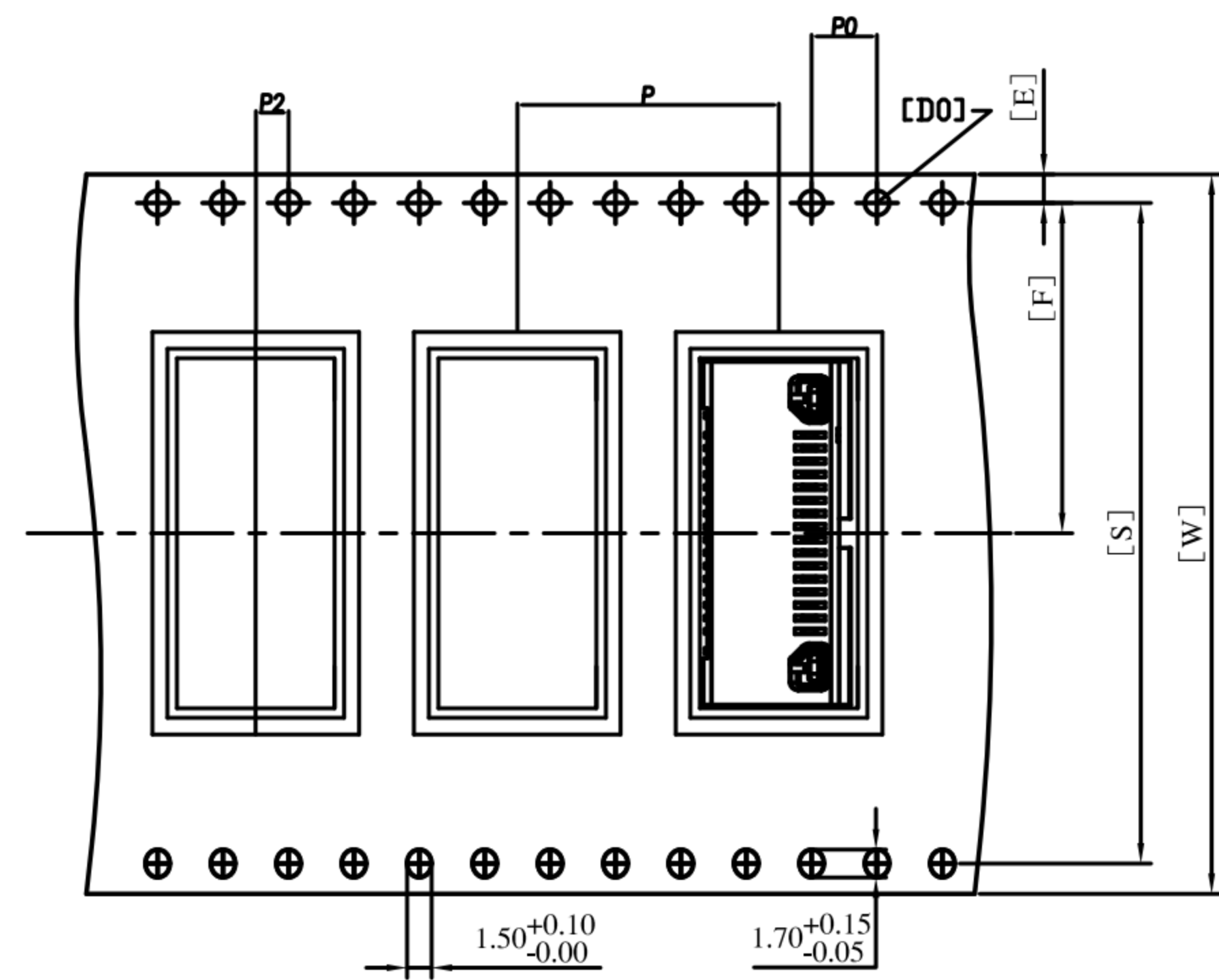
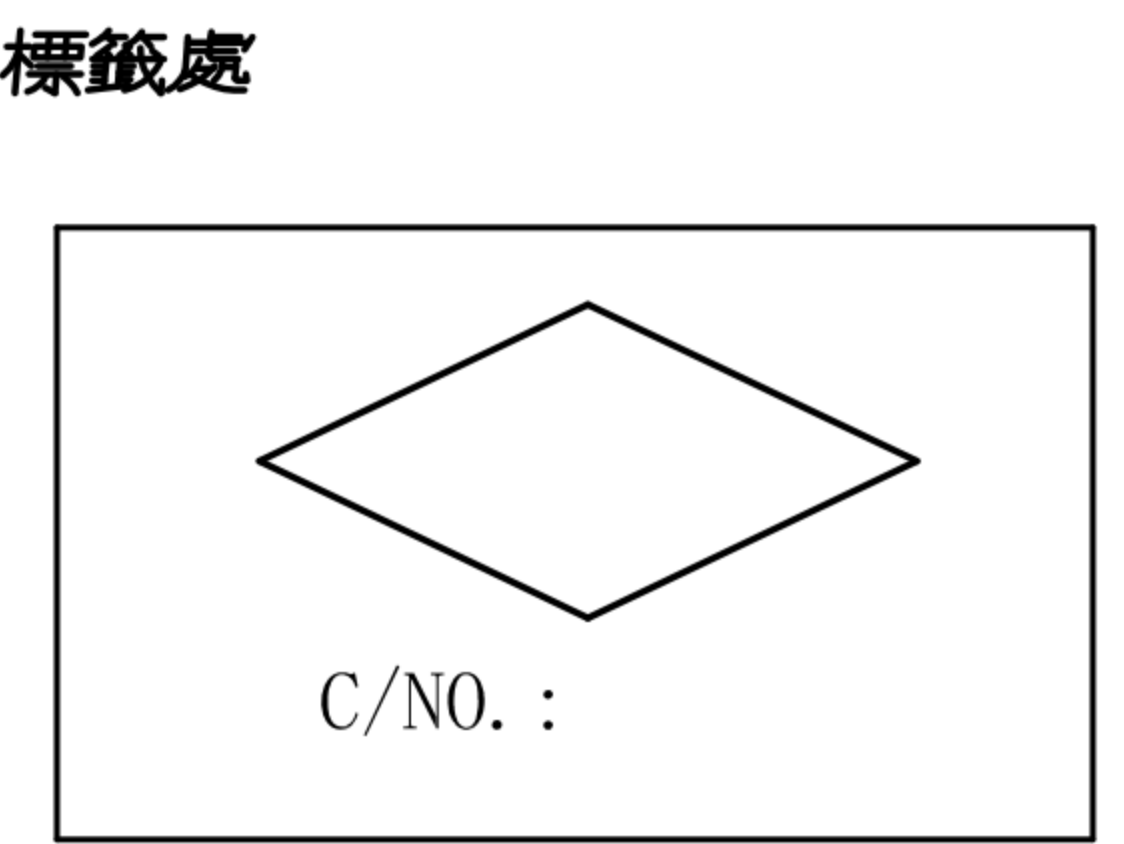
1. 一個紙箱可以裝10個包裝盤.
2. 每盤400pcs,每箱4Kpcs.
3. 將包裝盤放入防水袋中,包裝完後再封箱.

**步驟三:**

1. 用膠帶將紙箱封實.
2. 將標籤貼於紙箱上.



ITEM NO:  
QTY: PGS  
N. W. : KG  
G. W. : KG  
MEAS:



**NOTE:**

1. 若有未裝滿之零數箱,必須以緩衝材塞滿.
2. 在搬運過程中要輕拿輕放.
3. 載運輸中不可堆放過多,不可有重壓現象.
4. 在裝滿產品後,必須空留帶前和帶後15格以上,然後用紙膠布貼上.
5. 上帶在貼下帶時必須平整,且黏貼處不要出現氣泡.

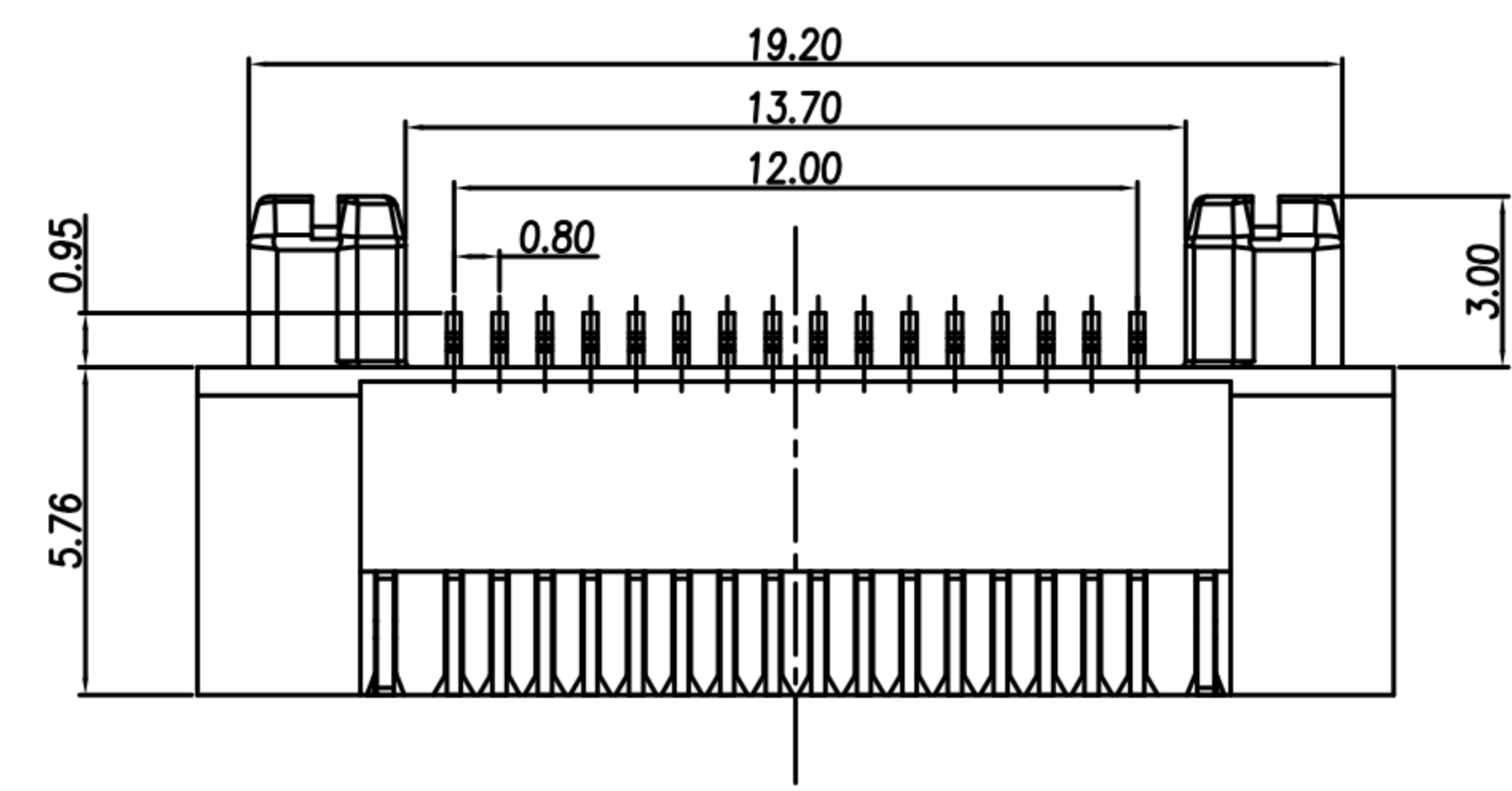
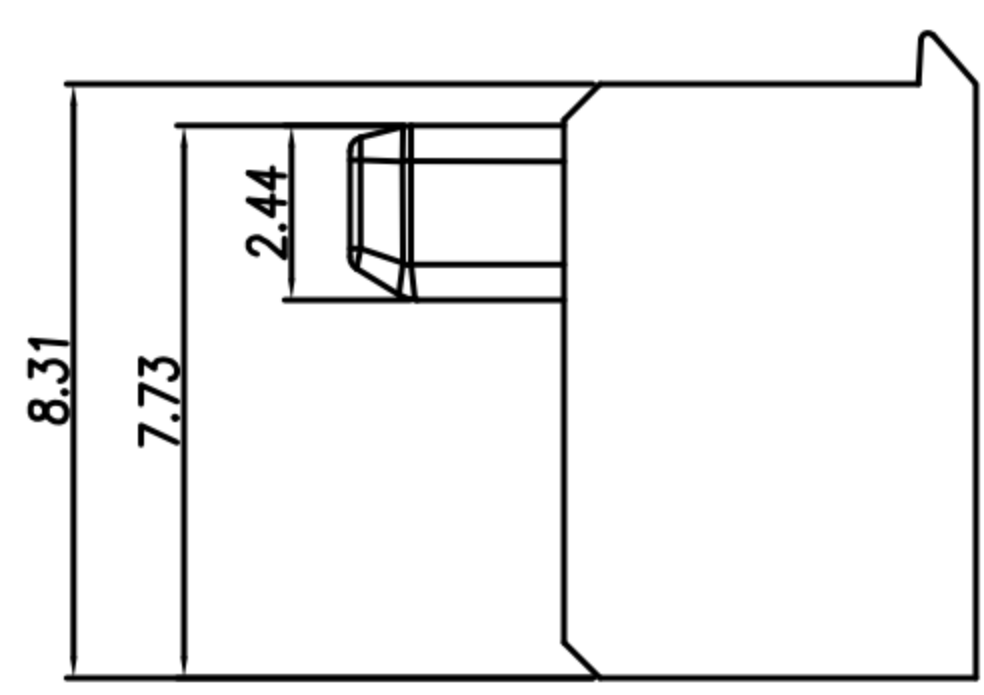
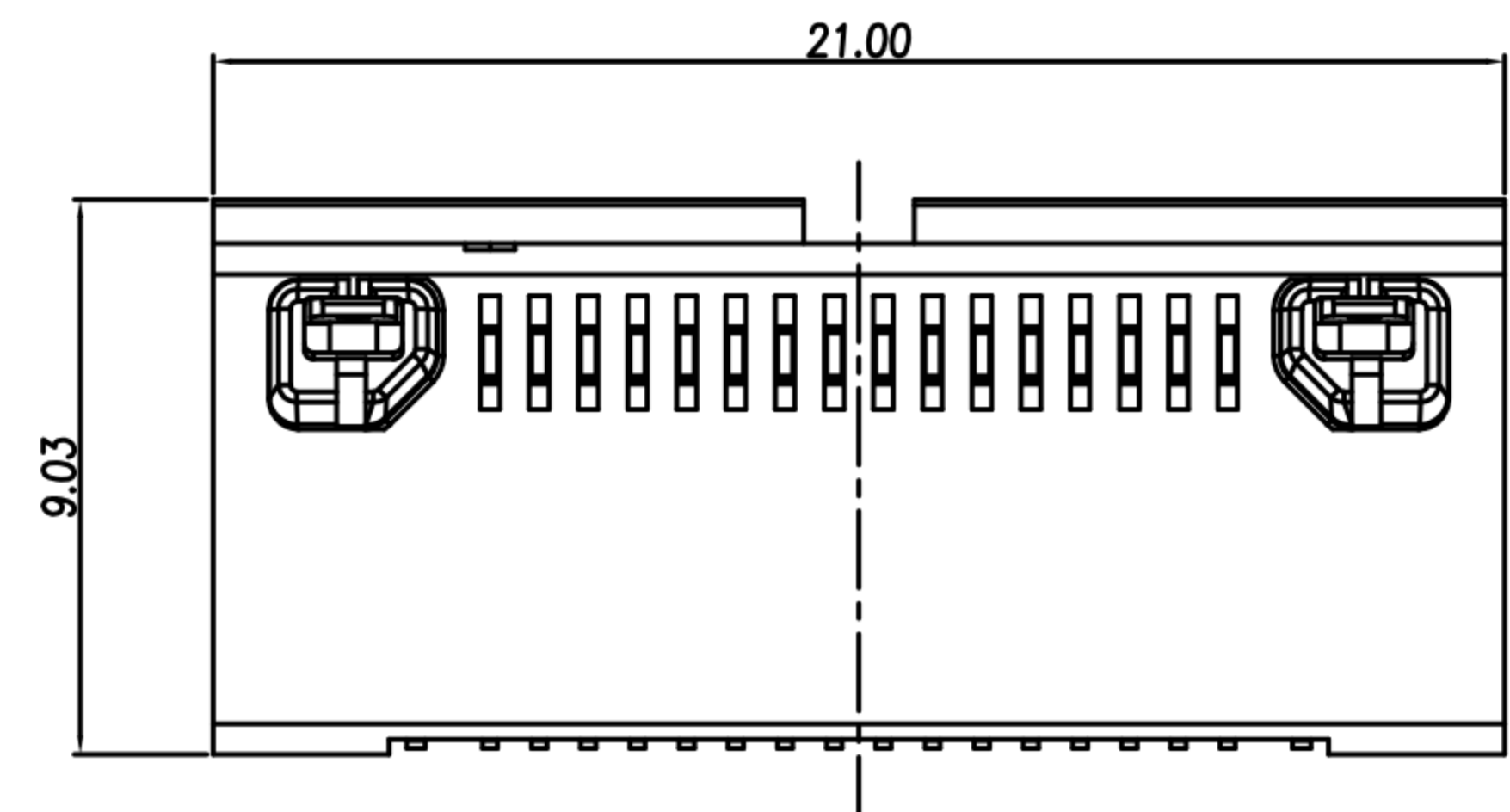
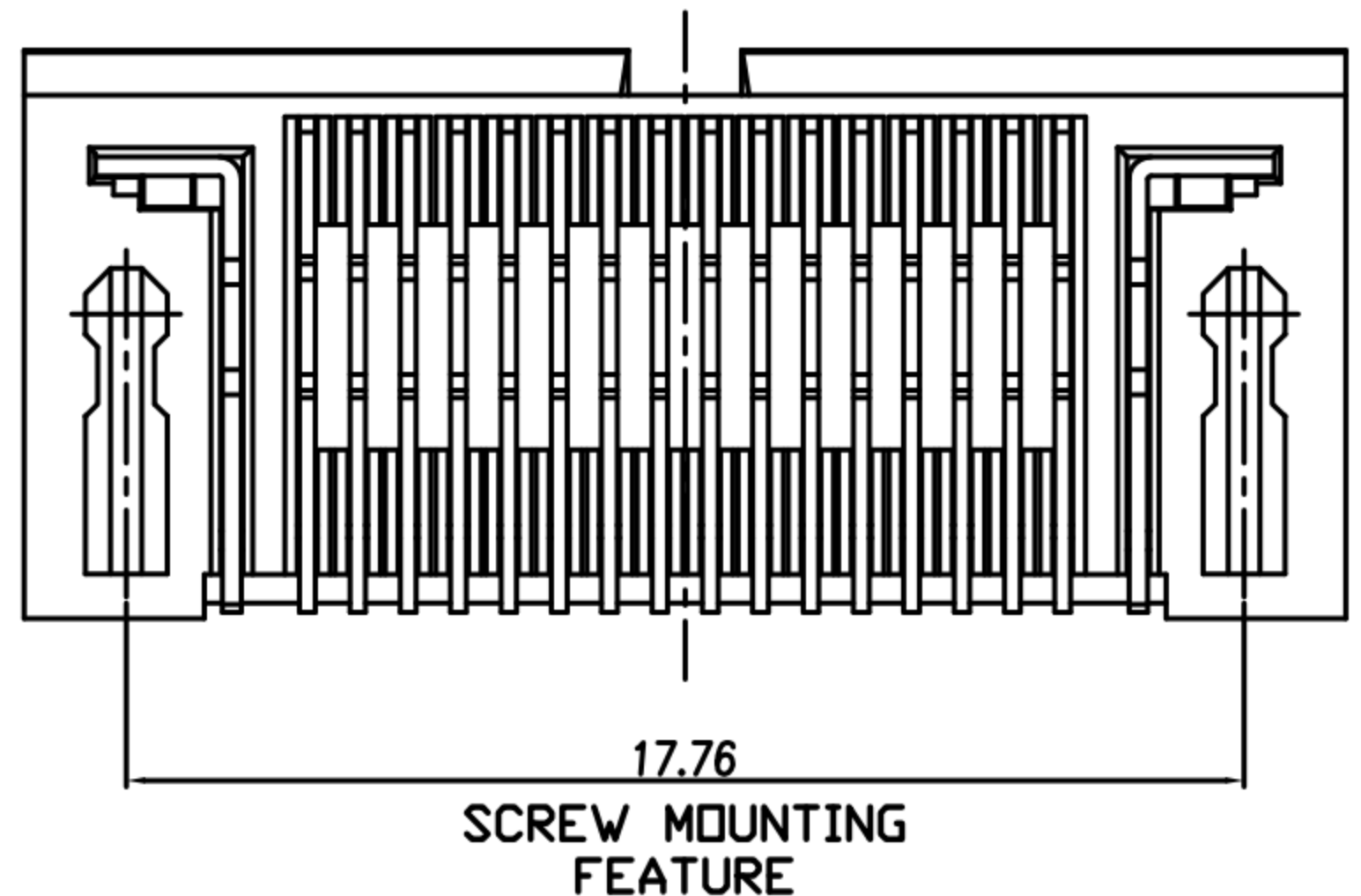
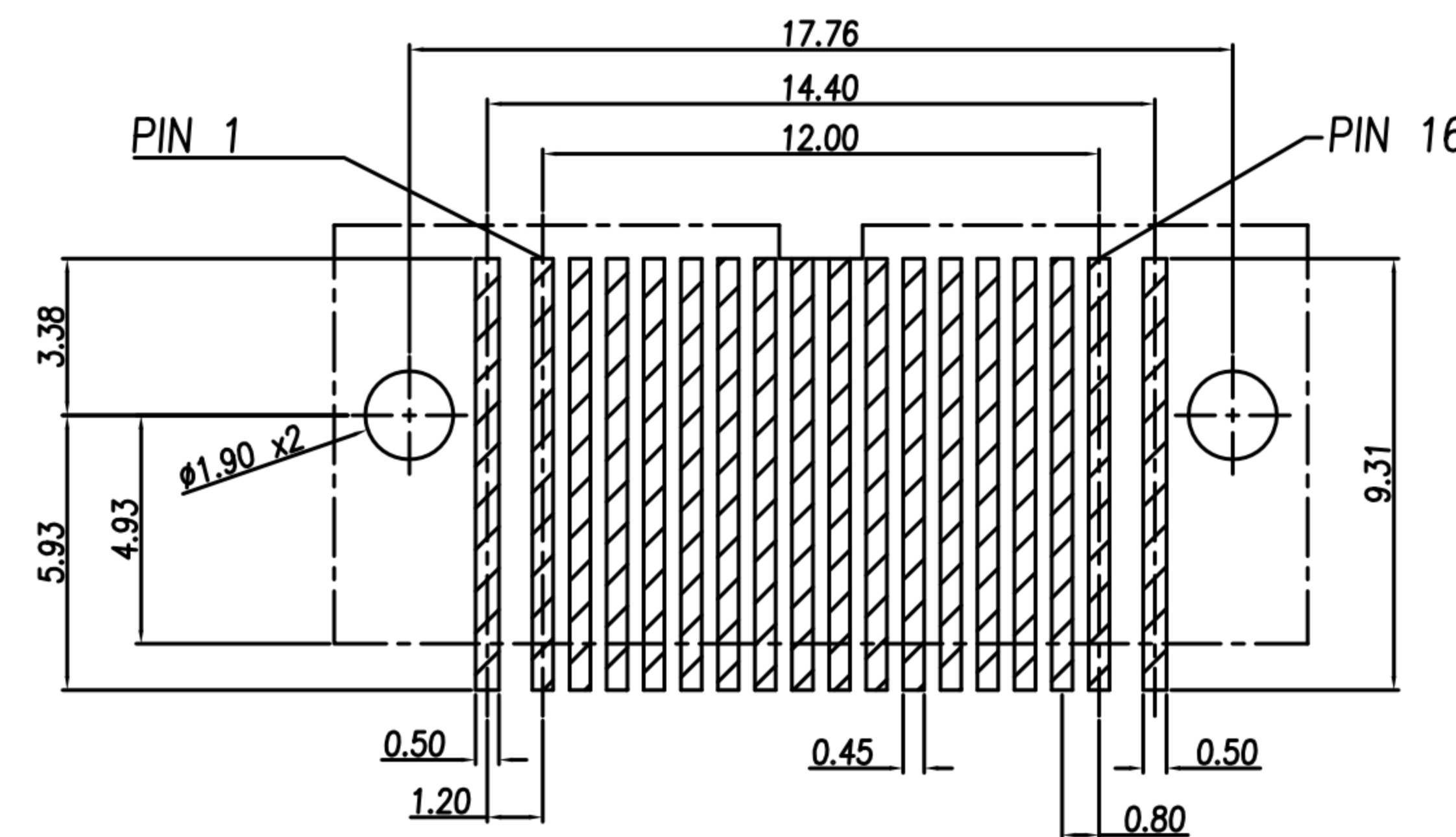
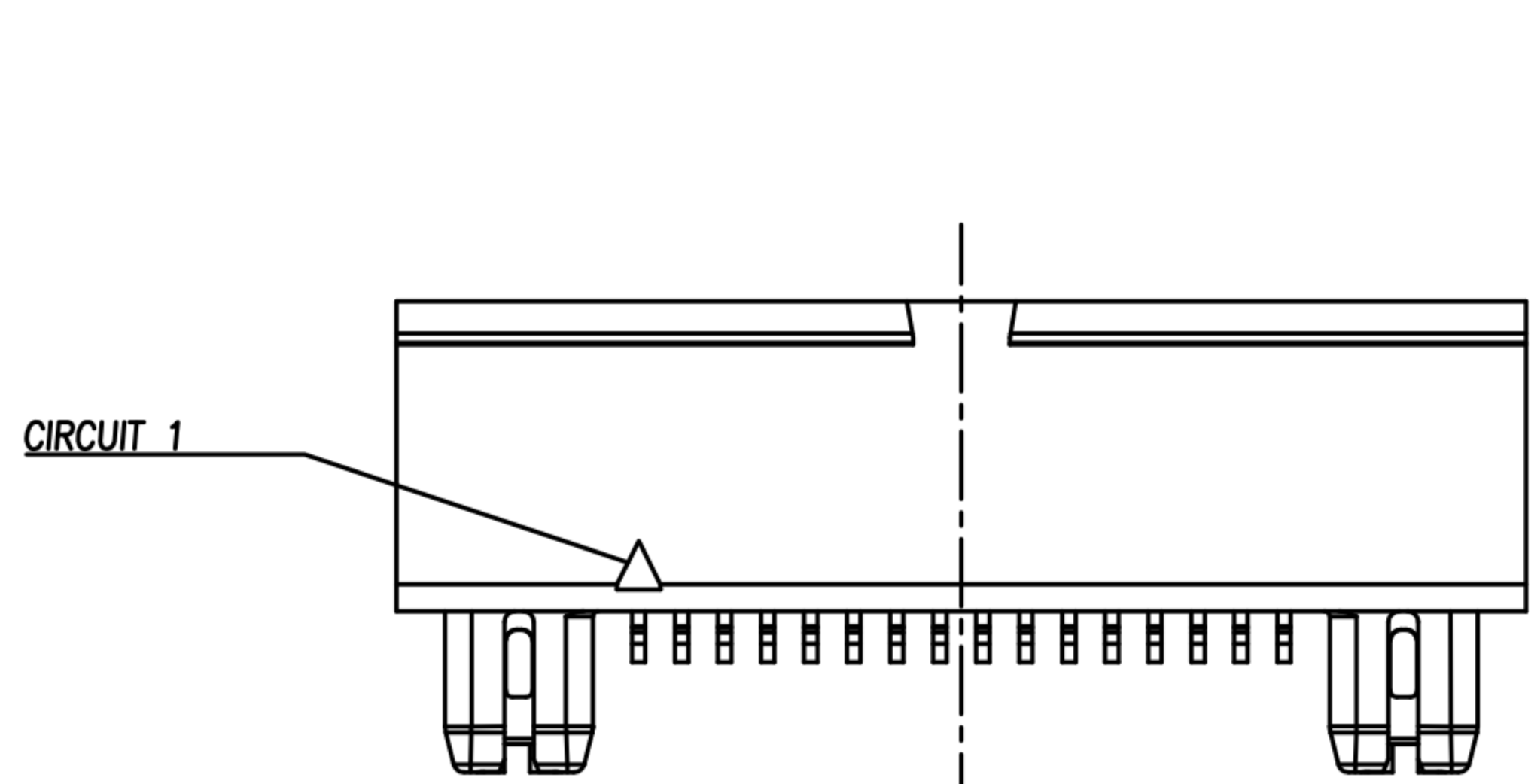
W	56.00 <sup>+0.30</sup> / <sub>-0.30</sub>	T	0.50±0.05	P0	4.00±0.10	A0	8.70±0.10	A1
S	52.40±0.10	F	26.20±0.10	P2	2.00±0.10	B0	21.40±0.10	B1
E	1.75±0.10	P	16.00±0.10	D0	∅1.50 ± <sub>0</sub> <sup>0.10</sup>	K0	9.45±0.10	K1

DRAWN	Mark Kao	APP'D	Ku Chou	UNIT	mm	TOLERANCE			TITLE	HANDYLINK 16P (M) PERPENDICULAR TO PCB			SHEET	2/2
CHK'D	Emily Suen			SCALE	1:1				PART NO.	PC-16M2-08-11	DWG NO.	QC7904	VERSION	B

广东科斯达电子科技有限公司  
GUANG DONG KE SI DA ELECTRONIC TECHNOLOGY CO., LTD.

CUSTOMER DRAWING

REV.	DESCRIPTION	APPROVED BY	DATE	ECN NO.
A	RELEASE	Yeh Chou	2017/08/16	
B				
C				



- MATERIAL :
  - 1-1. HOUSING : LCP UL94V-0 ; COLOR : BLACK
  - 1-2. CONTACT : PHOSPHOR BRONZE
  - 1-3. LATCHES : STAINLESS STEEL
- FINISH :
  - 2-1. CONTACT : CONTACT AREA : 5 MICRO INCHES MIN. GOLD PLATED  
SOLDER AREA : BRIGHT TIN  
UNDER PLATE : NICKEL
  - 2-2. LATCH SOLDER TAILS : BRIGHT TIN  
UNDER PLATE : MATTE TIN

DRAWN	Mark Kao	APP'D	Ku Chou	UNIT	mm	TOLERANCE .x ±0.10 .xx ±0.05 .xxx ±0.03 .xxxx ±0.01 ANGULA ±1°			广东科斯达电子科技有限公司 GUANG DONG KE SI DA ELECTRONIC TECHNOLOGY CO., LTD.	TITLE	HANDYLINK 16P (M) PERPENDICULAR TO PCB			SHEET	1/2
CHK'D	Emily Suen			SCALE	1:1					PART NO.	PC-16M2-08-11	DWG NO.	QC7904	VERSION	A