

CUSTOMER DRAWING

REV.	DESCRIPTION	APPROVED BY	DATE	ECN NO.
△A	RELEASE	Fido Weng	15/10/09'	
△B	變更料帶寬度	Fido Weng	06/06/16'	
△C				

步驟一:

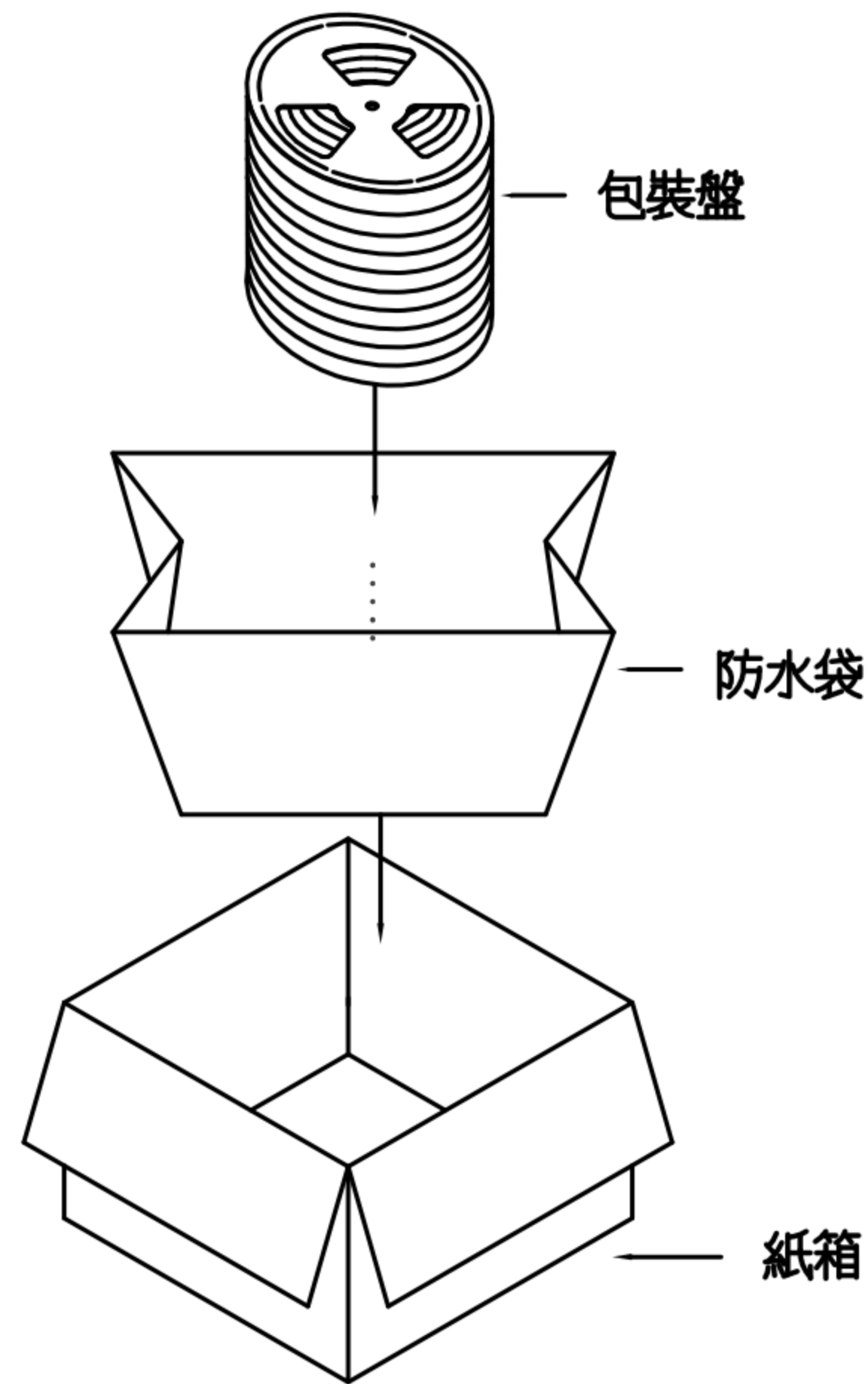
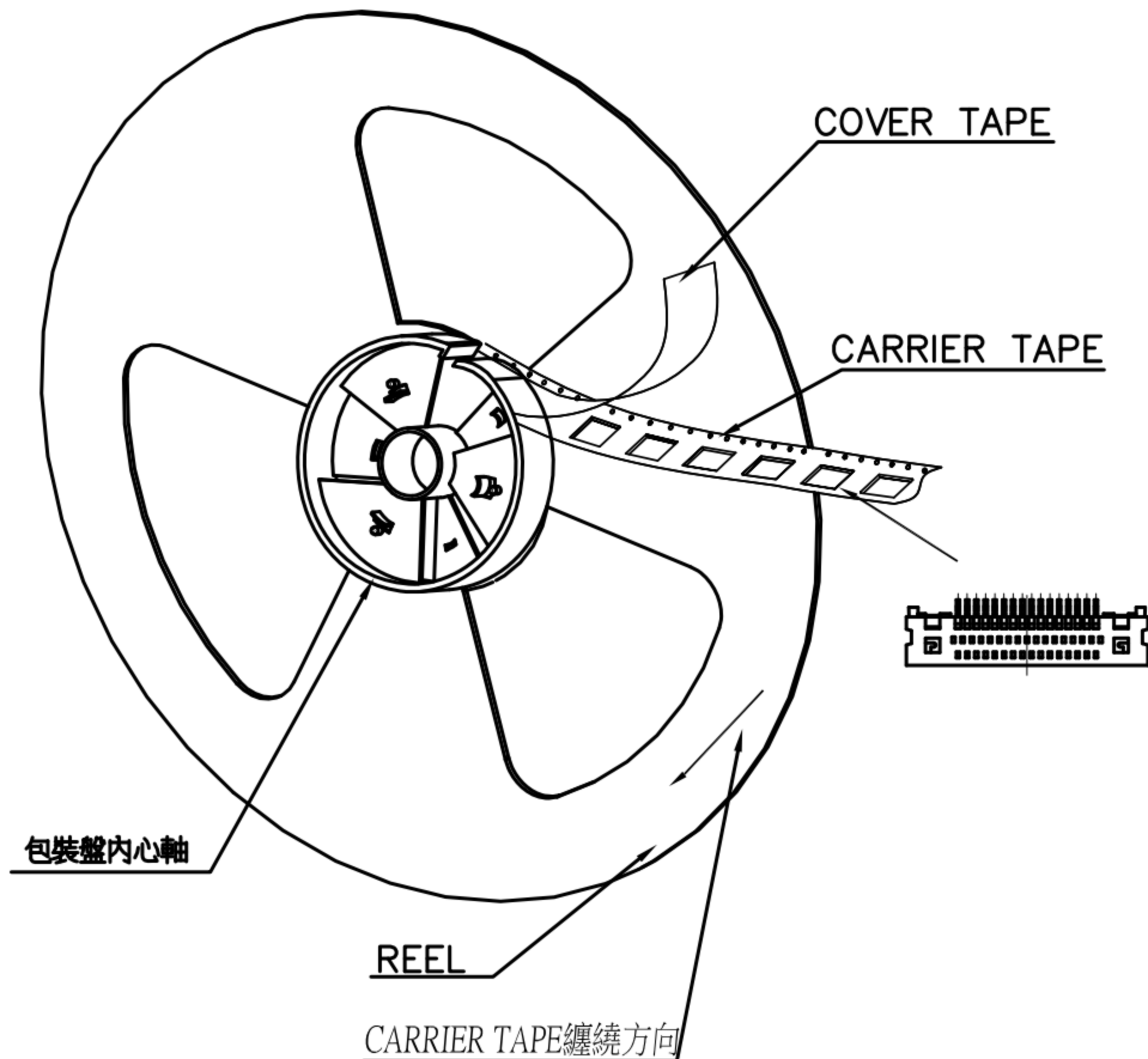
1. 將成品一一放入包裝盤內, 依同一方向置入.
2. 包裝方式, 如圖所示.
3. 一個包裝盤內放 1100 pcs.

步驟二:

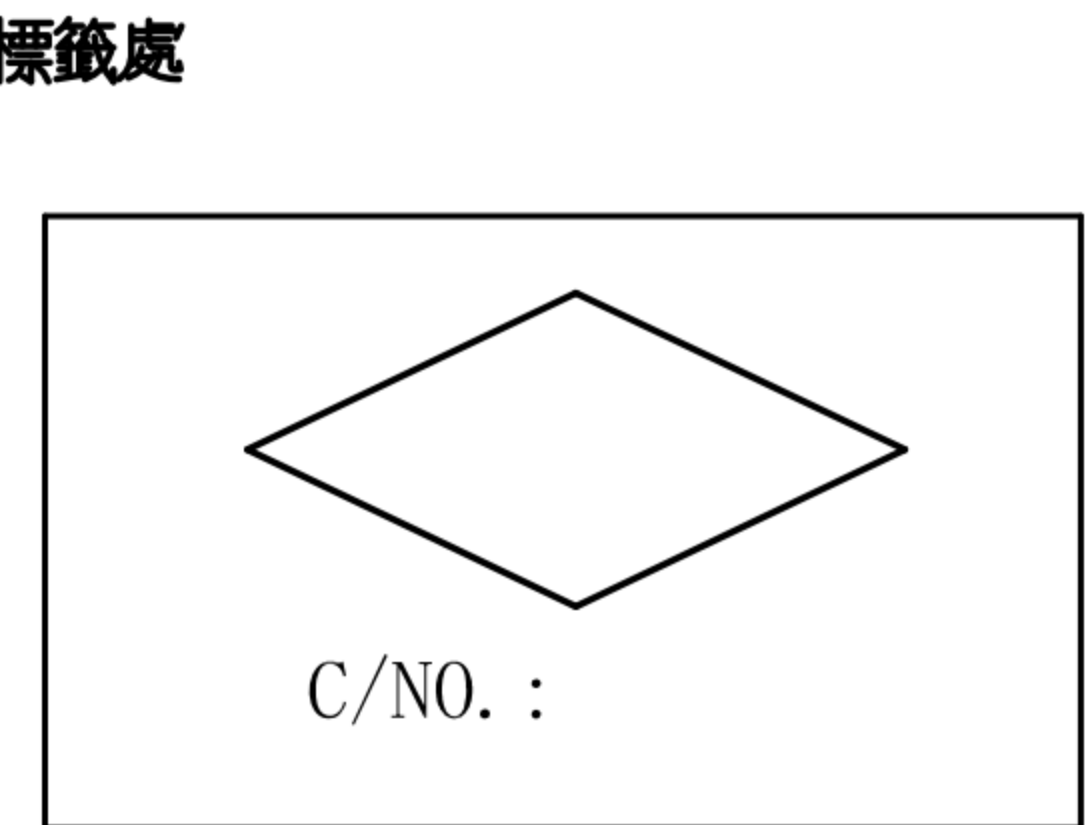
1. 一個紙箱可以裝 10 個包裝盤.
2. 每盤 1100 pcs, 每箱 11 kpcs.
3. 將包裝盤放入防水袋中, 包裝完後再封箱.

步驟三:

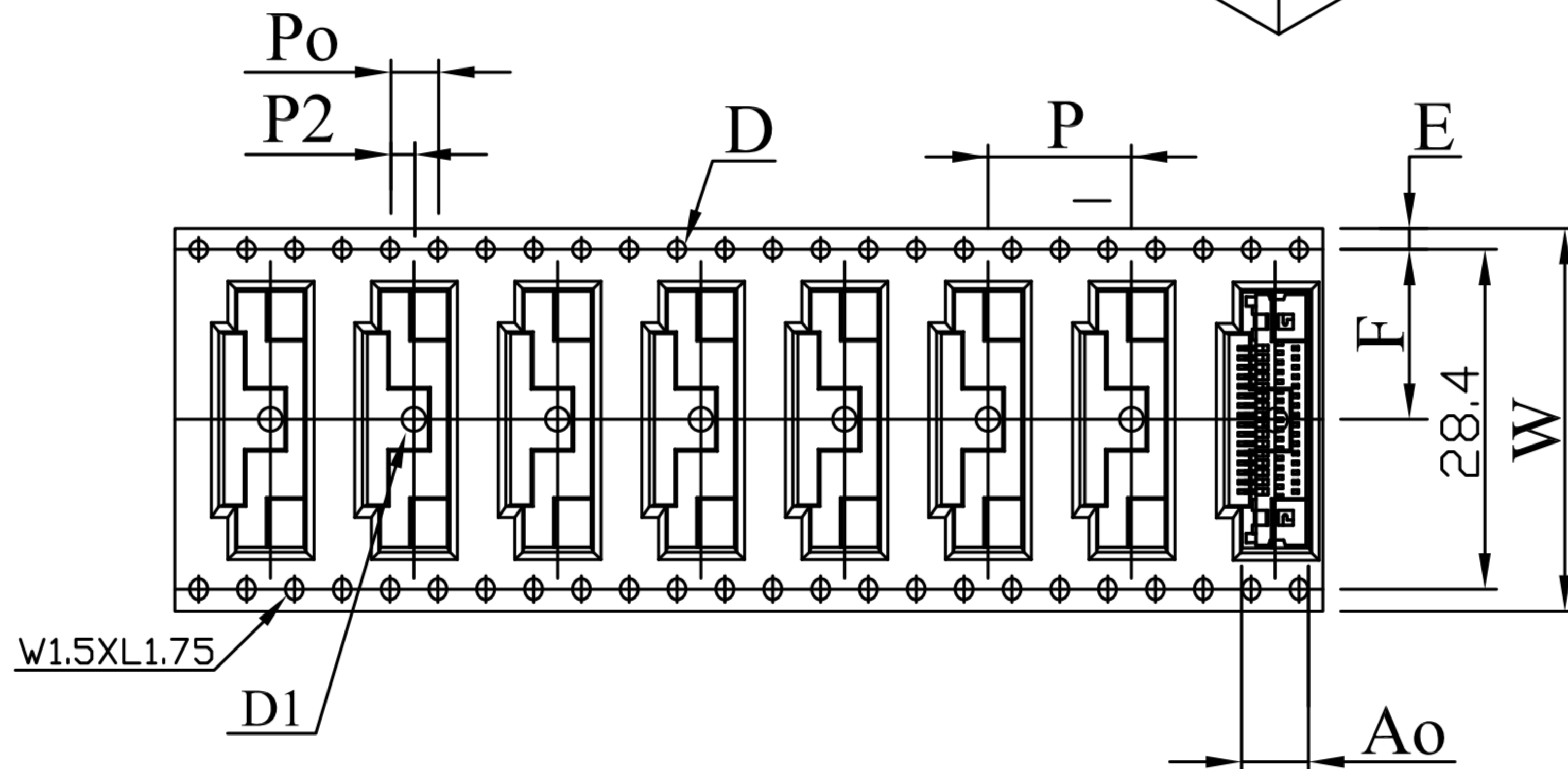
1. 用膠帶將紙箱封實.
2. 將標籤貼於紙箱上.



ITEM NO:
QTY: PGS
N. W. : KG
G. W. : KG
MEAS:



ITEM	SPEC
W	32.0 ^{+0.30} _{-0.30}
Ao	5.60 ^{+0.10} _{-0.10}
Bo	21.4 ^{+0.10} _{-0.10}
Ko	3.80 ^{+0.10} _{-0.10}
P	12.0 ^{+0.10} _{-0.10}
F	14.2 ^{+0.10} _{-0.10}
E	1.75 ^{+0.10} _{-0.10}
D	1.50 ^{+0.10} _{-0.00}
D1	2.00 ^{+0.10} _{-0.10}
Po	4.00 ^{+0.10} _{-0.10}
P2	2.00 ^{+0.10} _{-0.10}
t	0.35 ^{+0.05} _{-0.05}



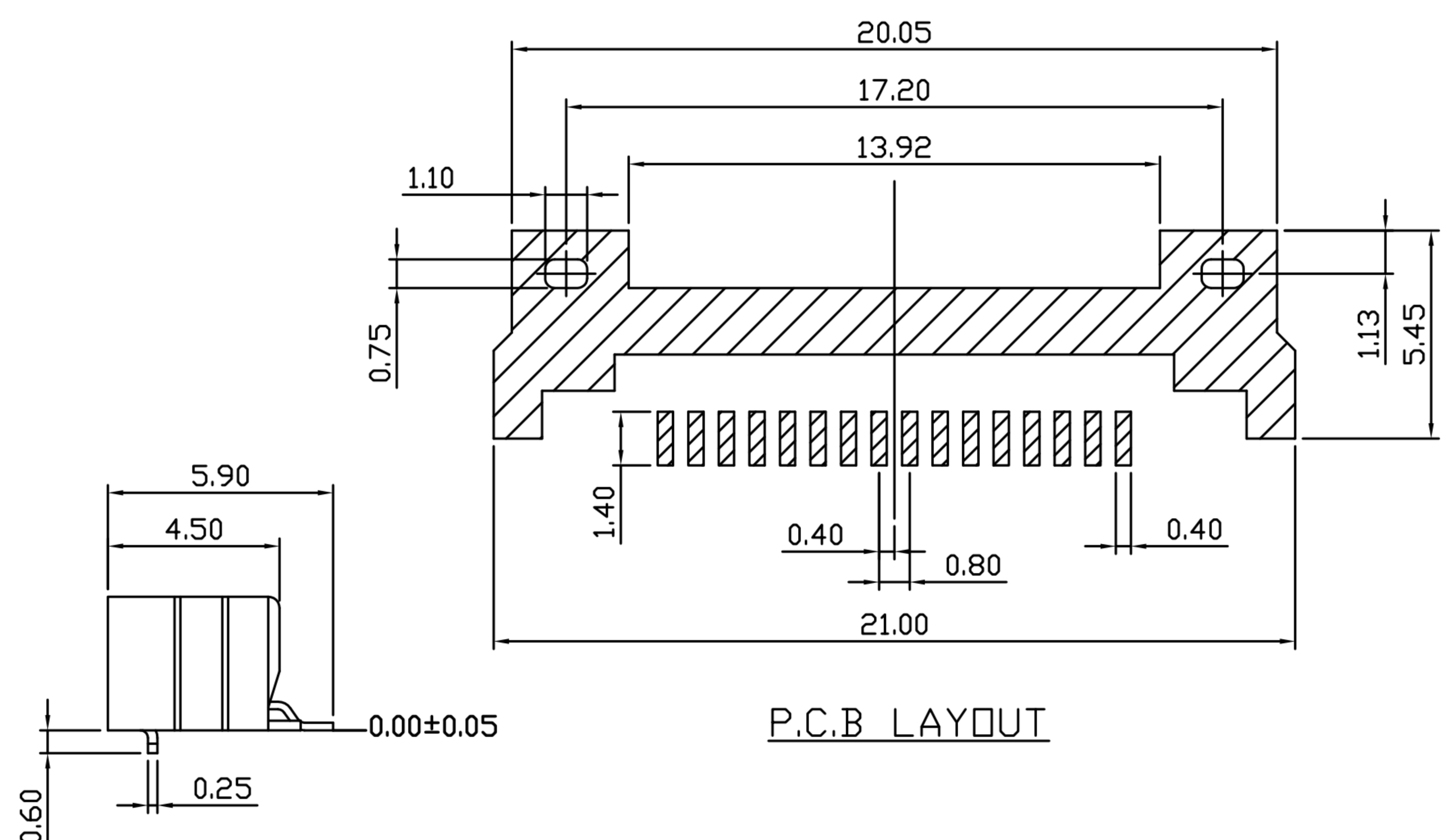
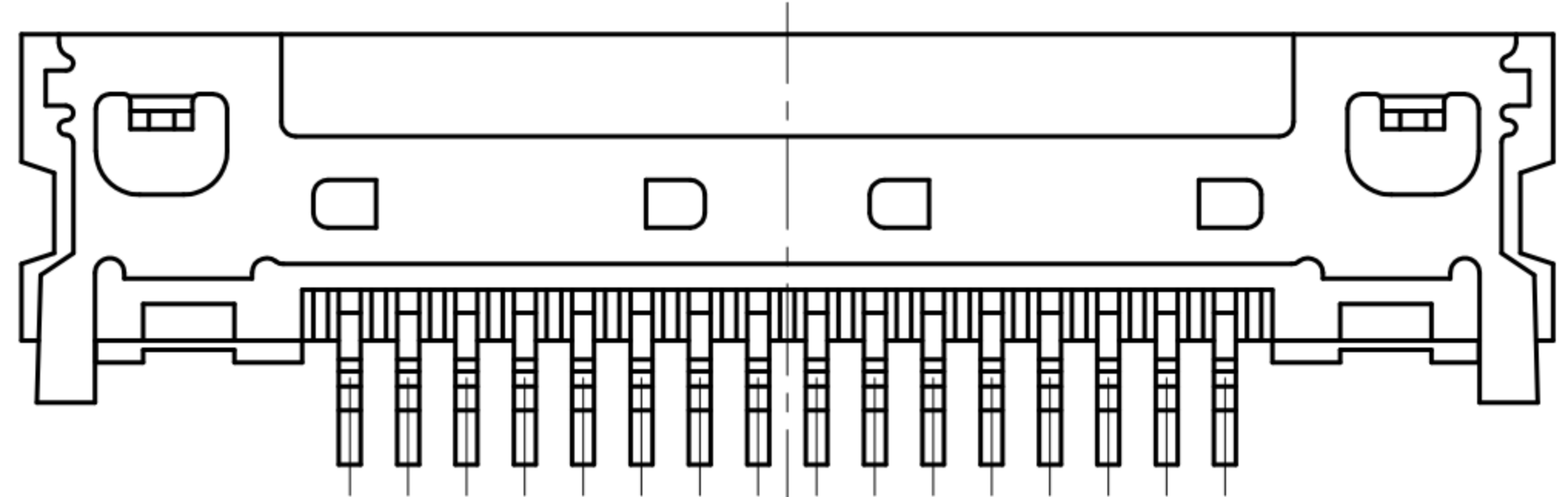
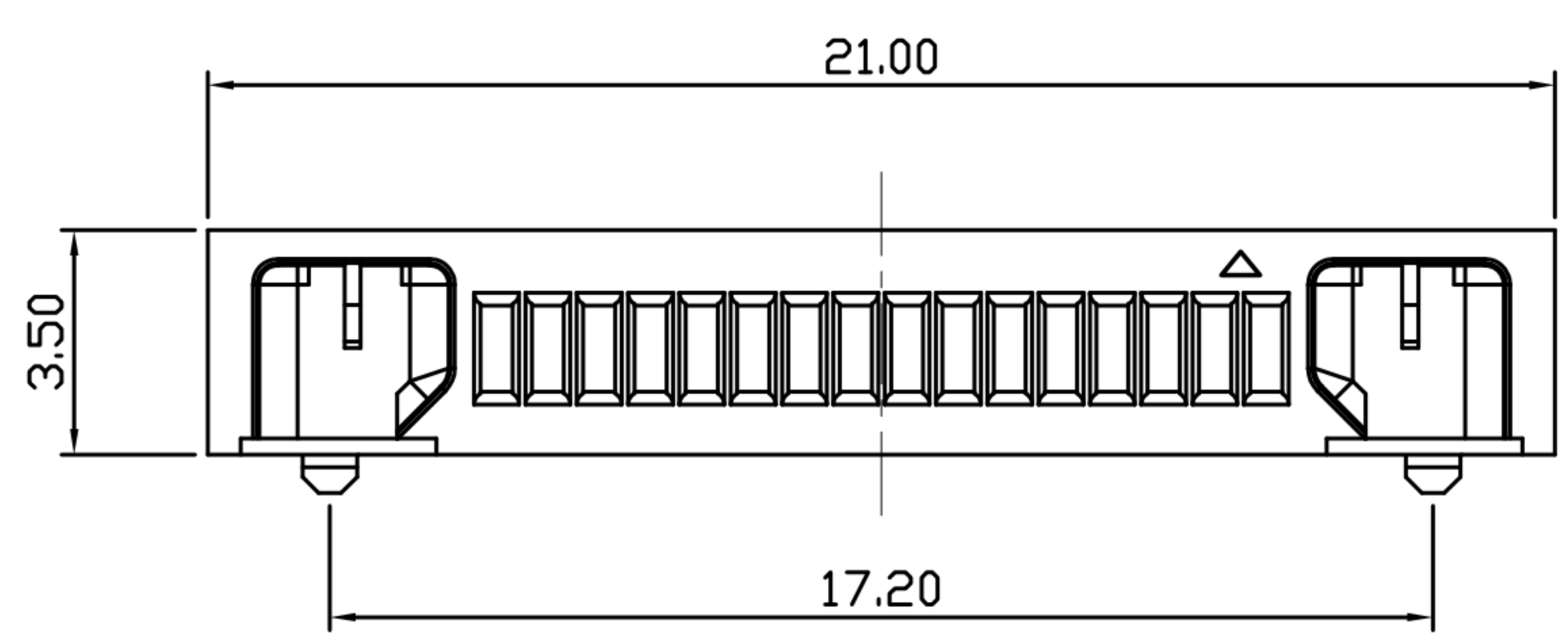
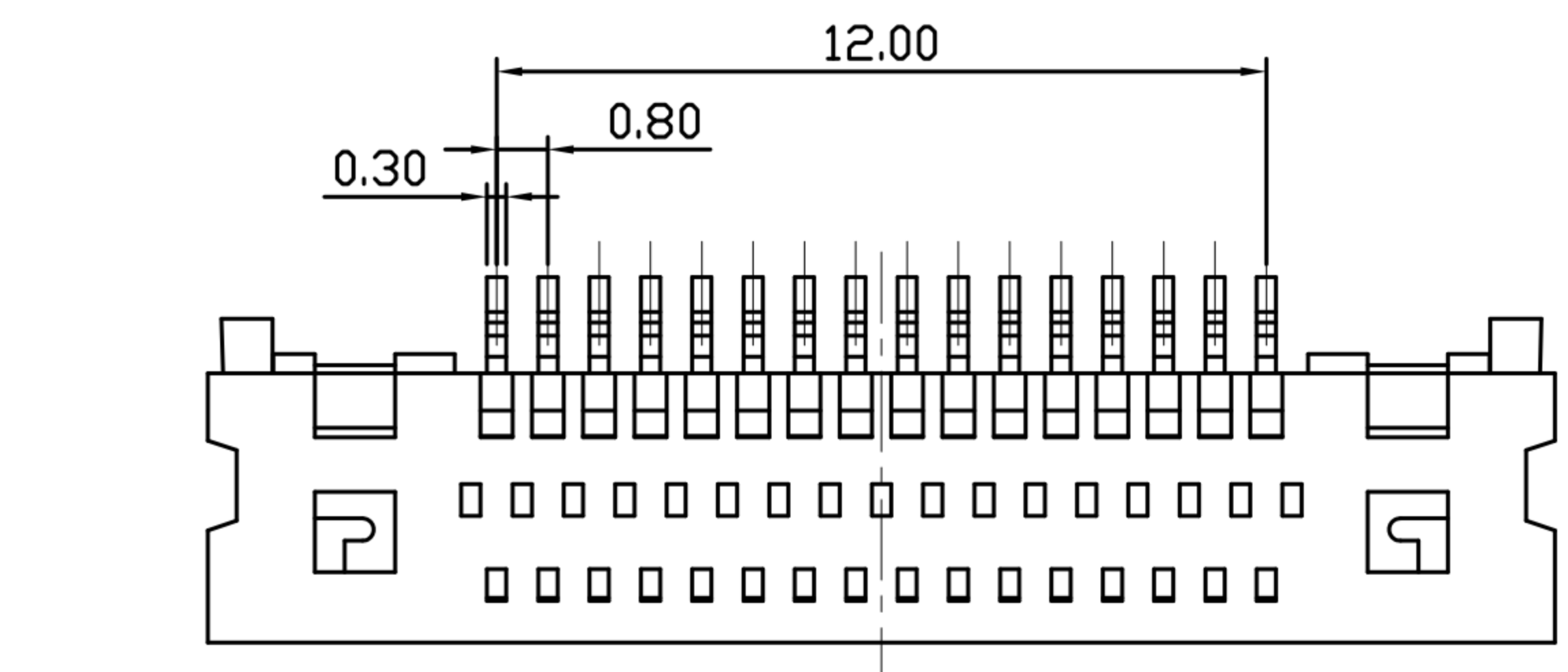
NOTE:

1. 若有未裝滿之零數箱, 必須以緩衝材塞滿.
2. 在搬運過程中要輕拿輕放.
3. 載運輸中不可堆放過多, 不可有重壓現象.
4. 在裝滿產品後, 必須空留帶前和帶後 15 格以上, 然後用紙膠布貼上.
5. 上帶在貼下帶時必須平整, 且黏貼處不要出現氣泡.

DRAWN	Mark Kao	APP'D	Ku Chou	UNIT	mm	TOLERANCE			TITLE	HANDYLINK SMT RECEPTACLE 16 CIRCUIT			SHEET	2/2
CHK'D	Emily Suen			SCALE	1:1				PART NO.	See Table A	DWG NO.	QC7674	VERSION	A

CUSTOMER DRAWING

REV.	DESCRIPTION	APPROVED BY	DATE	ECN NO.
△A	RELEASE	Fido Weng	25/07/13'	
△B				
△C				



P.C.B LAYOUT

TABLE A

PC-16F4-04-00	GOLD 30u"
PC-16F4-03-00	GOLD 15u"

1. MATERIAL :
 - 1-1. HOUSING : LCP UL94V-0 ; COLOR : BLACK
 - 1-2. CONTACT : PHOSPHOR BRONZE
 - 1-3. SHELL : STAINLESS STEEL
2. FINISH :
 - 2-1. CONTACT : CONTACT AREA SEE TABLE A
NICKEL PLATED 150u" ON OVER ALL
 - 2-2. SHELL : MATTE TIN 100u" ON OVER ALL

DRAWN	Mark Kao	APP'D	Ku Chou	UNIT	mm	TOLERANCE			TITLE	HANDYLINK SMT RECEPTACLE 16 CIRCUIT			SHEET
CHK'D	Emily Suen			SCALE	1:1	.x ±0.20 .xx ±0.10 .xxx ±0.05 .xxxx ±0.03 ANGULA ±1°			PART NO.	See Table A	DWG NO.	QC7674	1/2 VERSION A