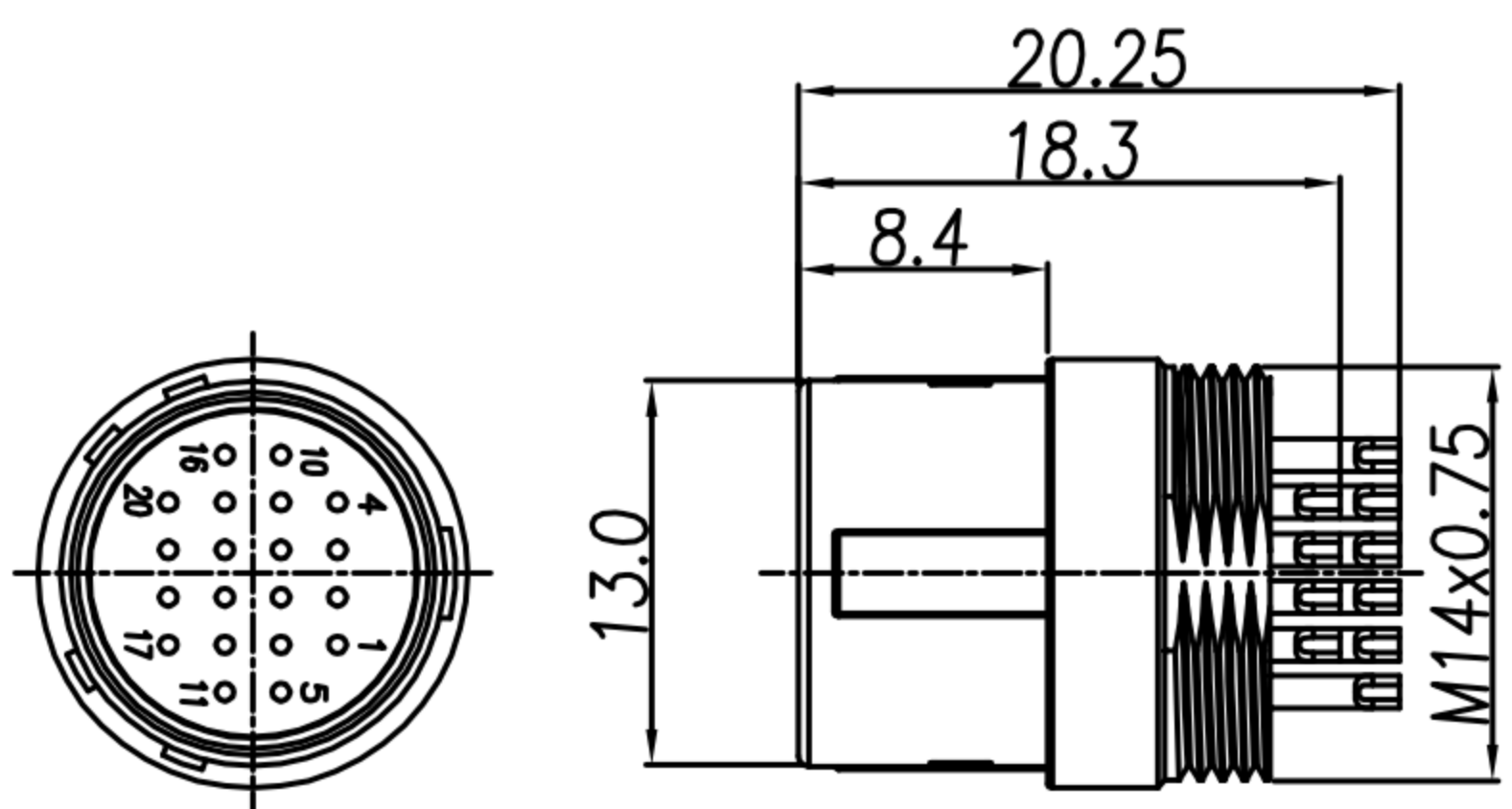
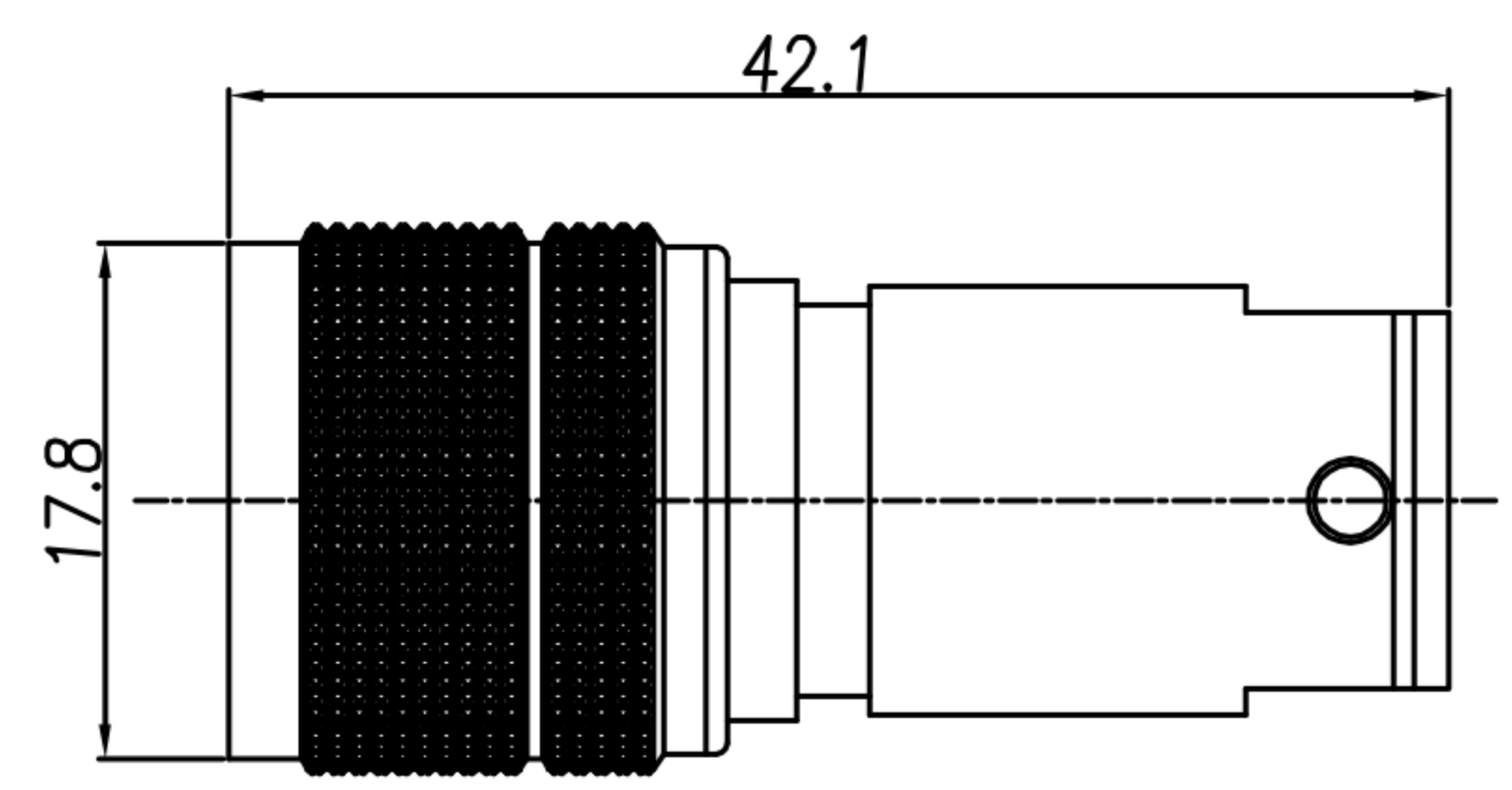


CUSTOMER DRAWING

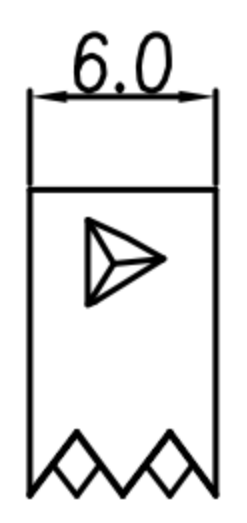
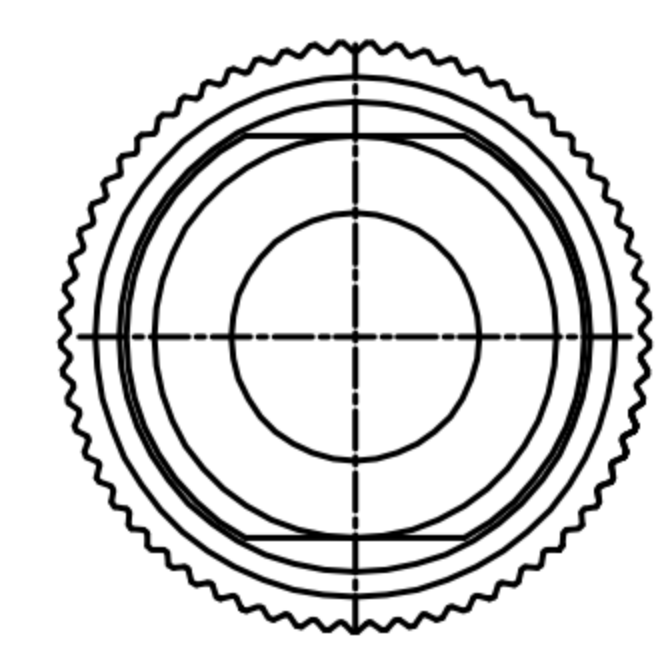
REV.	DESCRIPTION	APPVL. BY	DATE	ECN NO.
A	RELEASE	Emily Suen	10/07/12"	
B				
C				



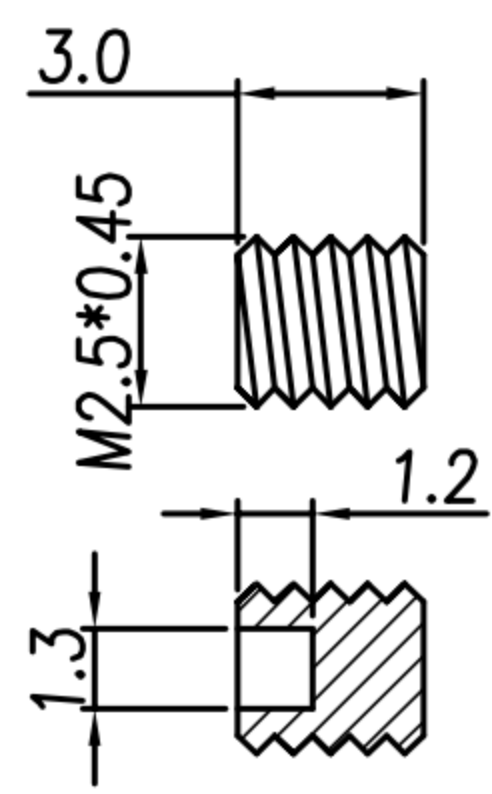
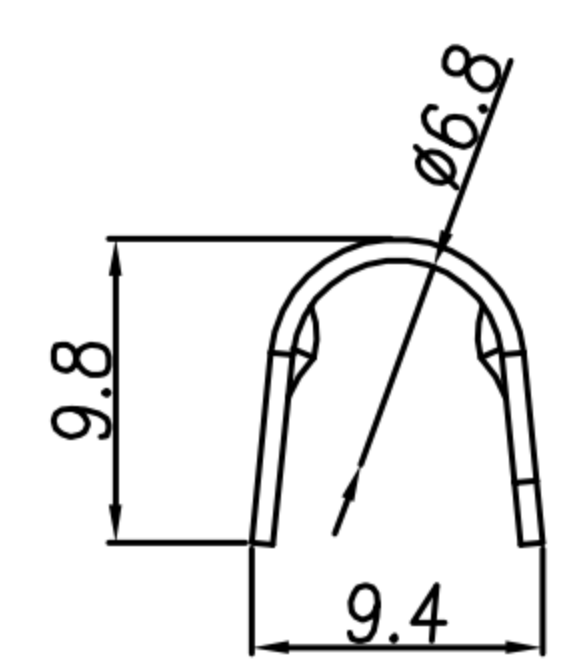
HOUSING+CONTACT+SHELL A



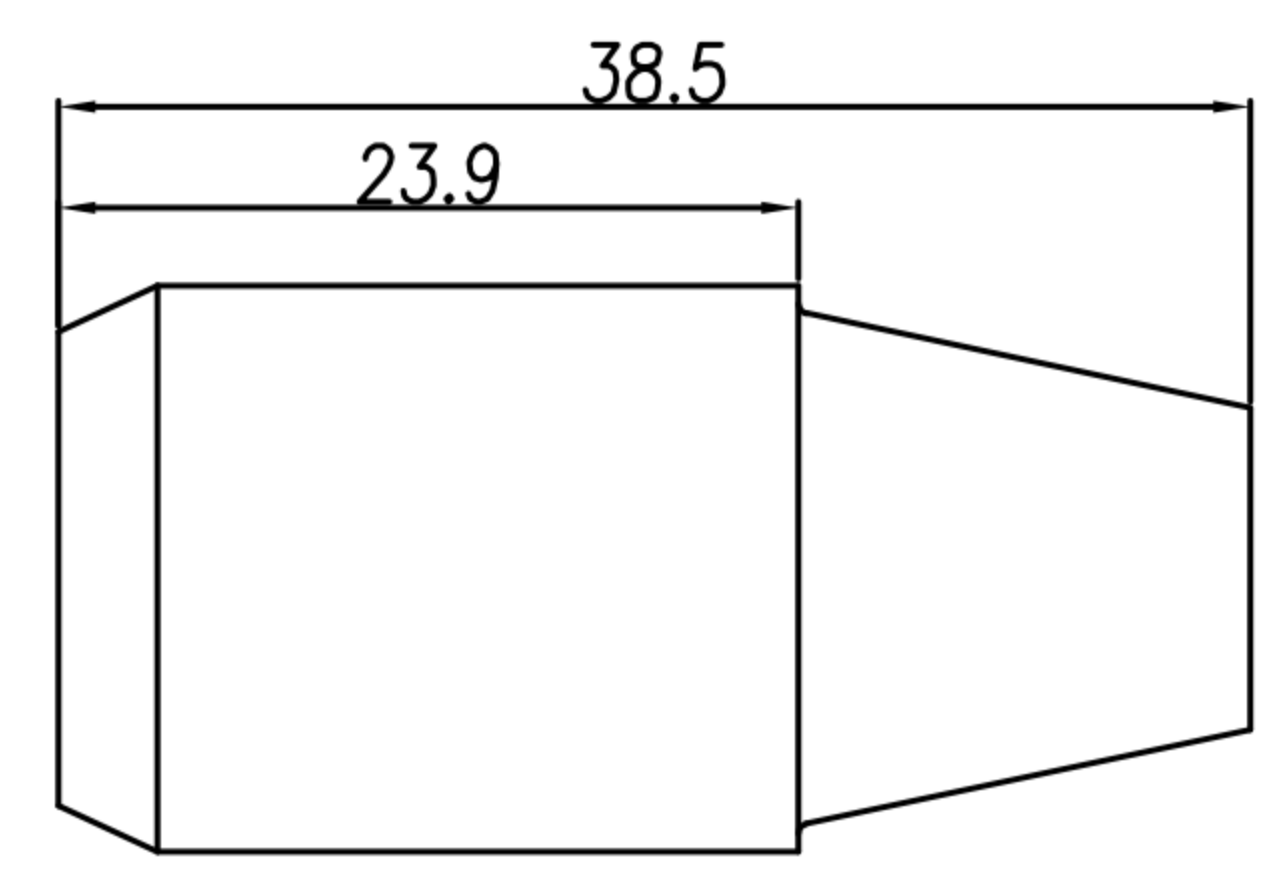
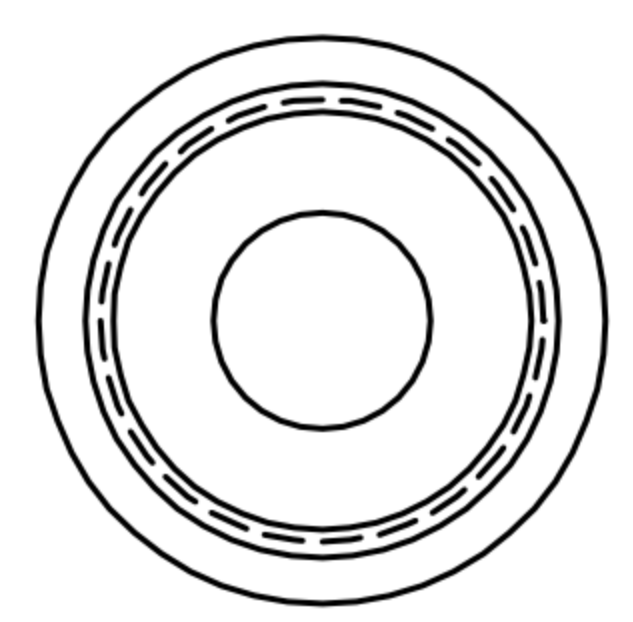
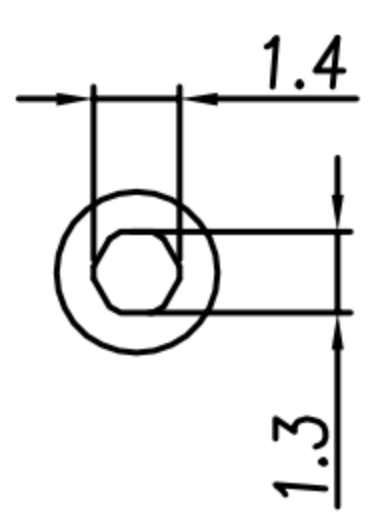
SHELL A +SHELL B +SPRING



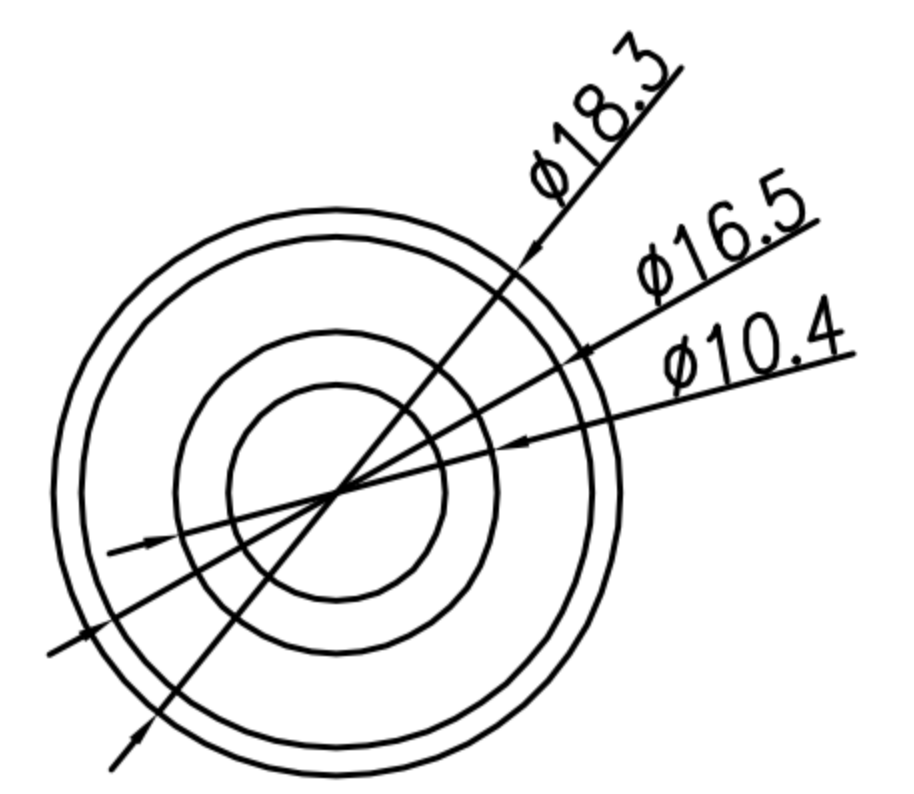
CRAMP



SCREW



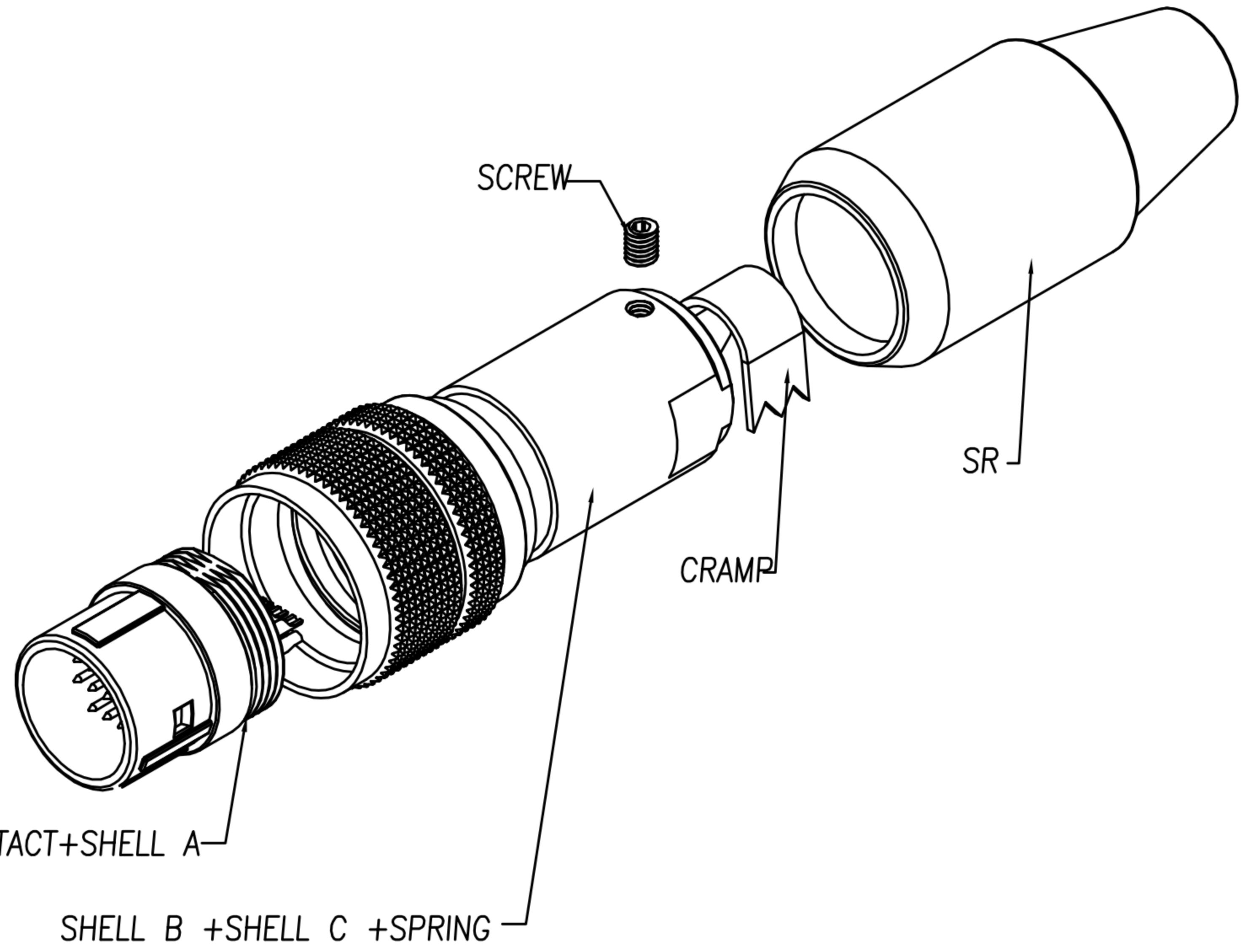
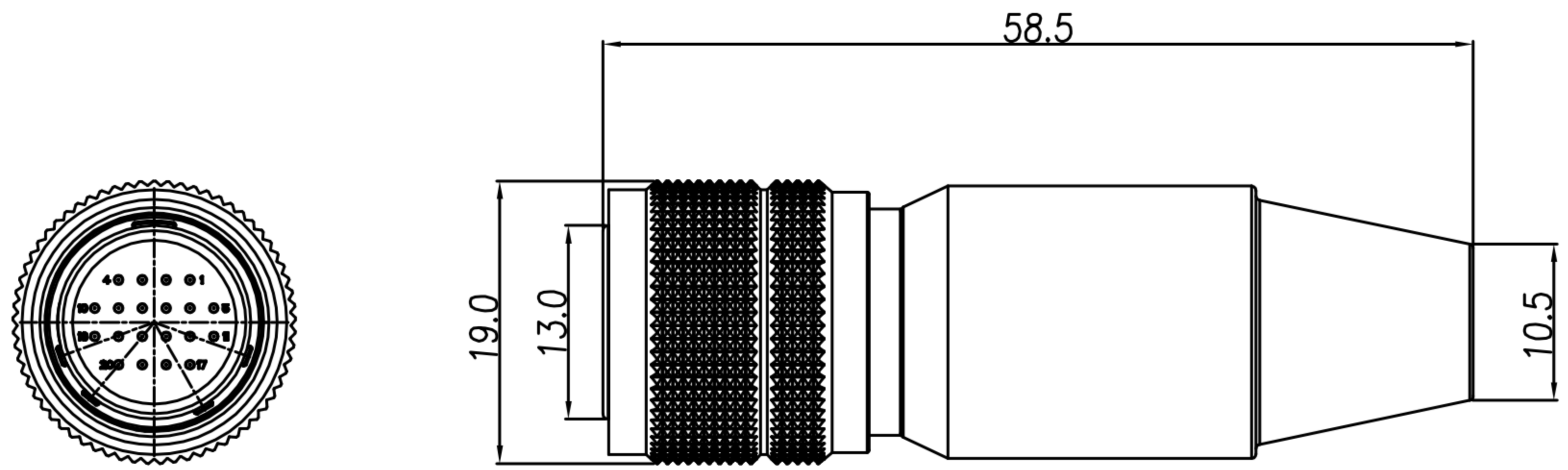
SR



DRAW	Lai Angus	APPVL	Emily Suen	UNIT	mm	TOLERANCE		广东科斯达电子科技有限公司 GUANG DONG KE SI DA ELECTRONIC TECHNOLOGY CO., LTD.	TITLE	DIN 20PIN(M) PLUG 插头式(SHELL SIZE 13mm)			SHEET	2/2
CHECK	Emily Suen			SCALE	1:1	.x ±0.20 .xx ±0.15 .xxx ±0.05 .xxxx ±0.03 ANGULA ±1°			PART NO.	DI-20M2-01	DWG NO.	QC5833	VERSION	A

CUSTOMER DRAWING

REV.	DESCRIPTION	APPVL. BY	DATE	ECN NO.
A	RELEASE	Emily Suen	10/07/12"	
B				
C				



1. MATERIAL :
 - 1-1. HOUSING : NYLON46 UL94V-0 ; COLOR : BLACK
 - 1-2. CONTACT : BRASS
 - 1-3. SHELL A : ZINC ALLOY
 - 1-4. SHELL B : BRASS
 - 1-5. SHELL C : BRASS
 - 1-6. SPRING : STAINLESS STEEL
 - 1-7. SCREW : ALLOY STEEL
 - 1-8. CRAMP : BRASS
 - 1-9. SR : NBR ; COLOR : BLACK
2. FINISH :
 - 2-1. CONTACT : GOLD FLASH
 - 2-2. SHELL A : NICKEL
 - 2-3. SHELL B : SATIN NICKEL
 - 2-4. SHELL C : NICKEL
 - 2-5. SPRING : NICKEL
 - 2-6. SCREW : NICKEL
3. ELECTRICAL SPECIFICATION :
 - 3-1. Rated current : 2A
 - 3-2. Rated voltage : 100V AC / 140V DC
4. Environmental :
 - 4-1. Operation Temperature : -25℃~85℃

DRAW	Lai Angus	APPVL	Emily Suen	UNIT	mm	TOLERANCE		广东科斯达电子科技有限公司 GUANG DONG KE SI DA ELECTRONIC TECHNOLOGY CO., LTD.	TITLE	DIN 20PIN(M) PLUG 圆形插座(SHELL SIZE 13mm)			SHEET
CHECK	Emily Suen			SCALE	1:1	.x ±0.20 .xx ±0.15 .xxx ±0.05 .xxxx ±0.03 ANGULA ±1°			PART NO.	DI-20M2-01	DWG NO.	QC5833	VERSION