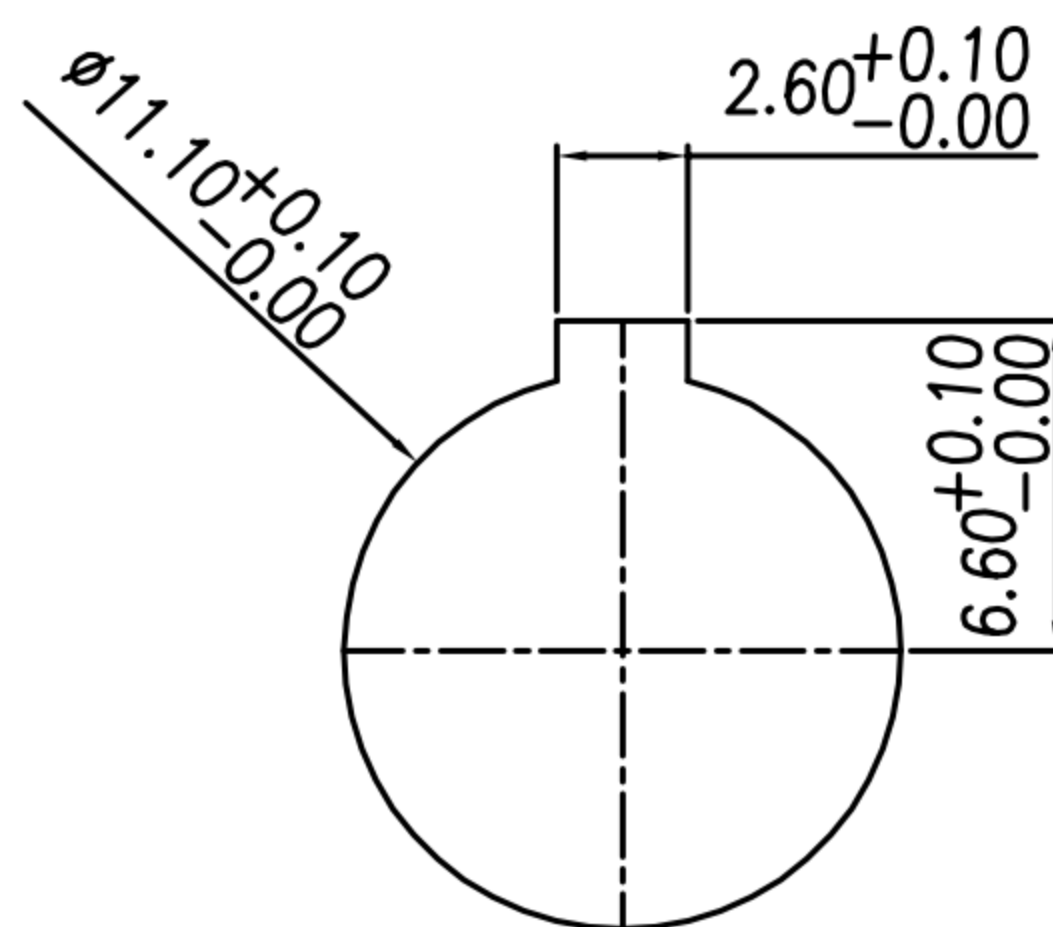
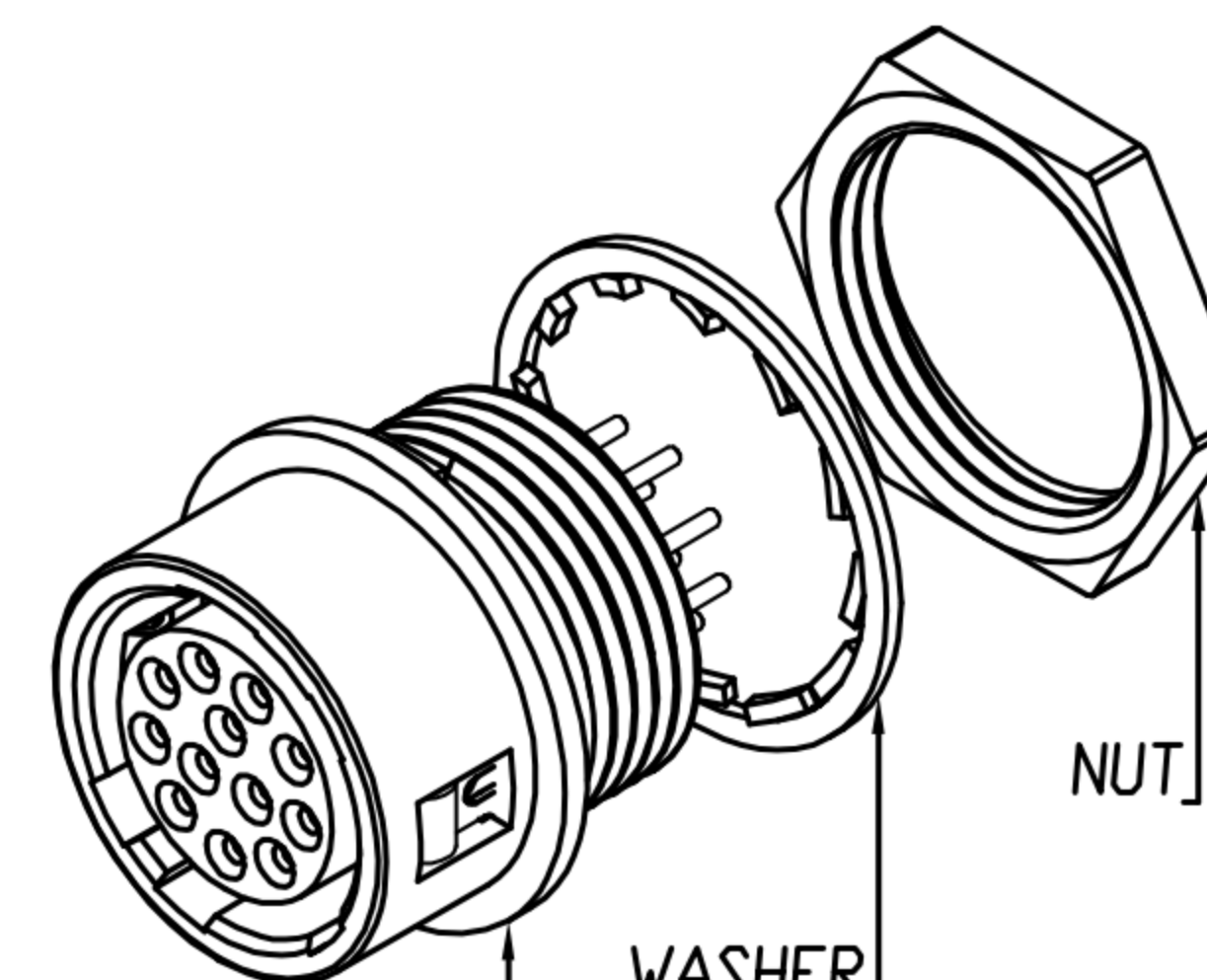
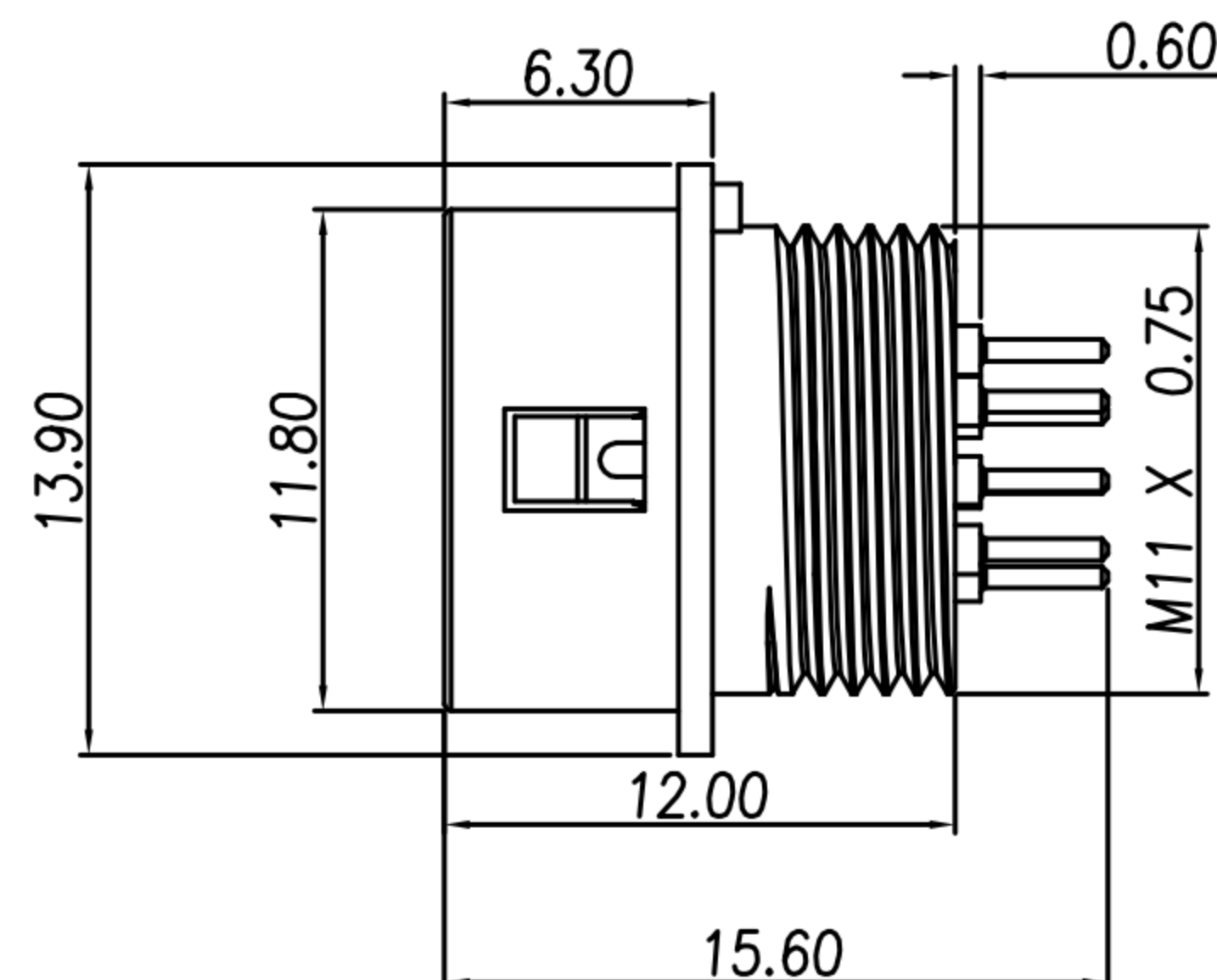
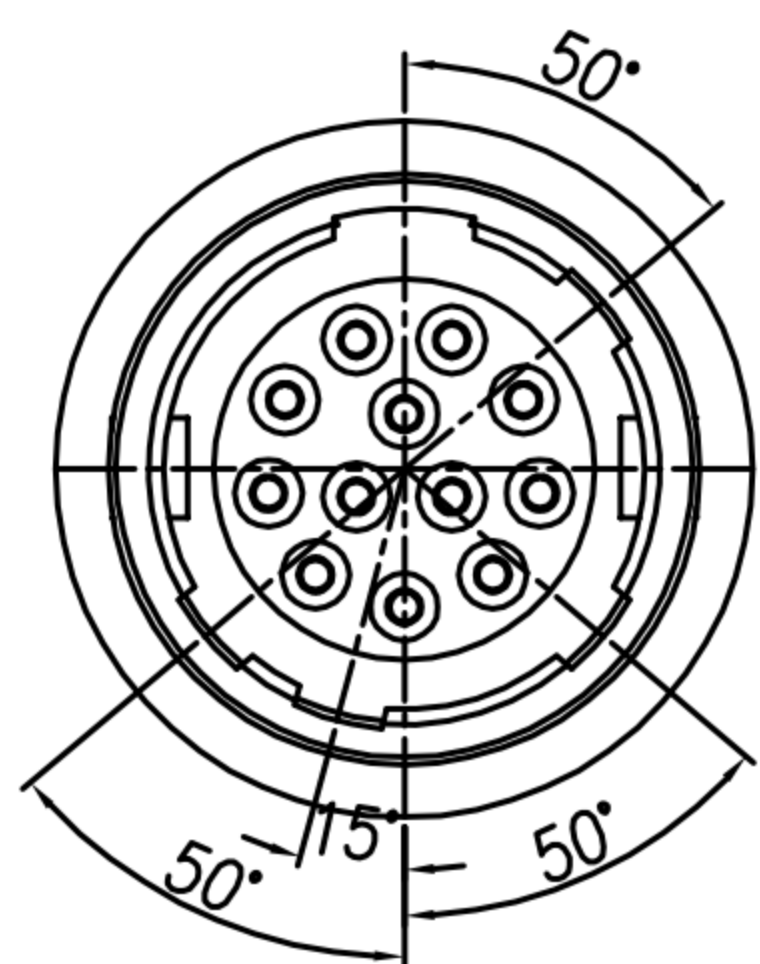


CUSTOMER DRAWING

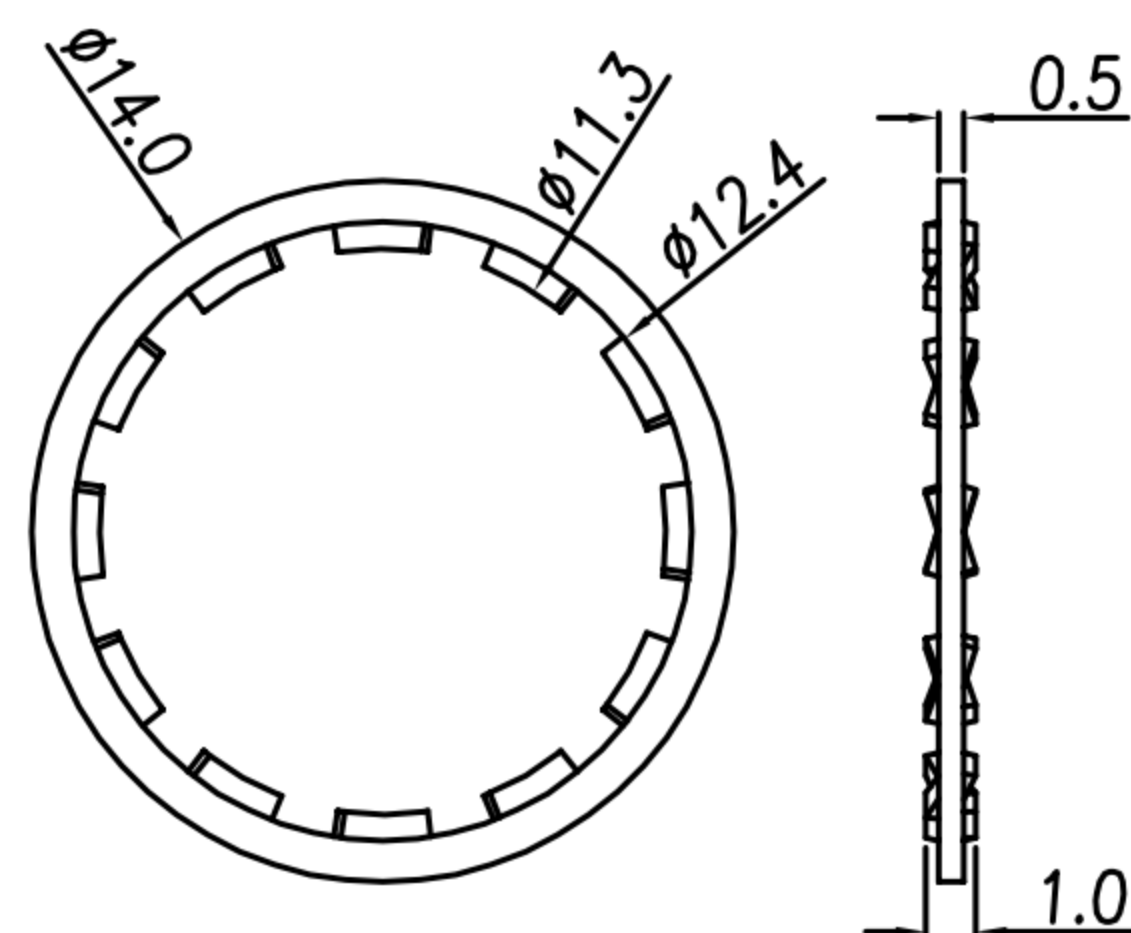
REV.	DESCRIPTION	APPROVED BY	DATE	ECN NO.
A	RELEASE	Emily Suen	05/08/11*	
B	CHANGE MATERIAL	Emily Suen	16/09/22*	
C				
D				



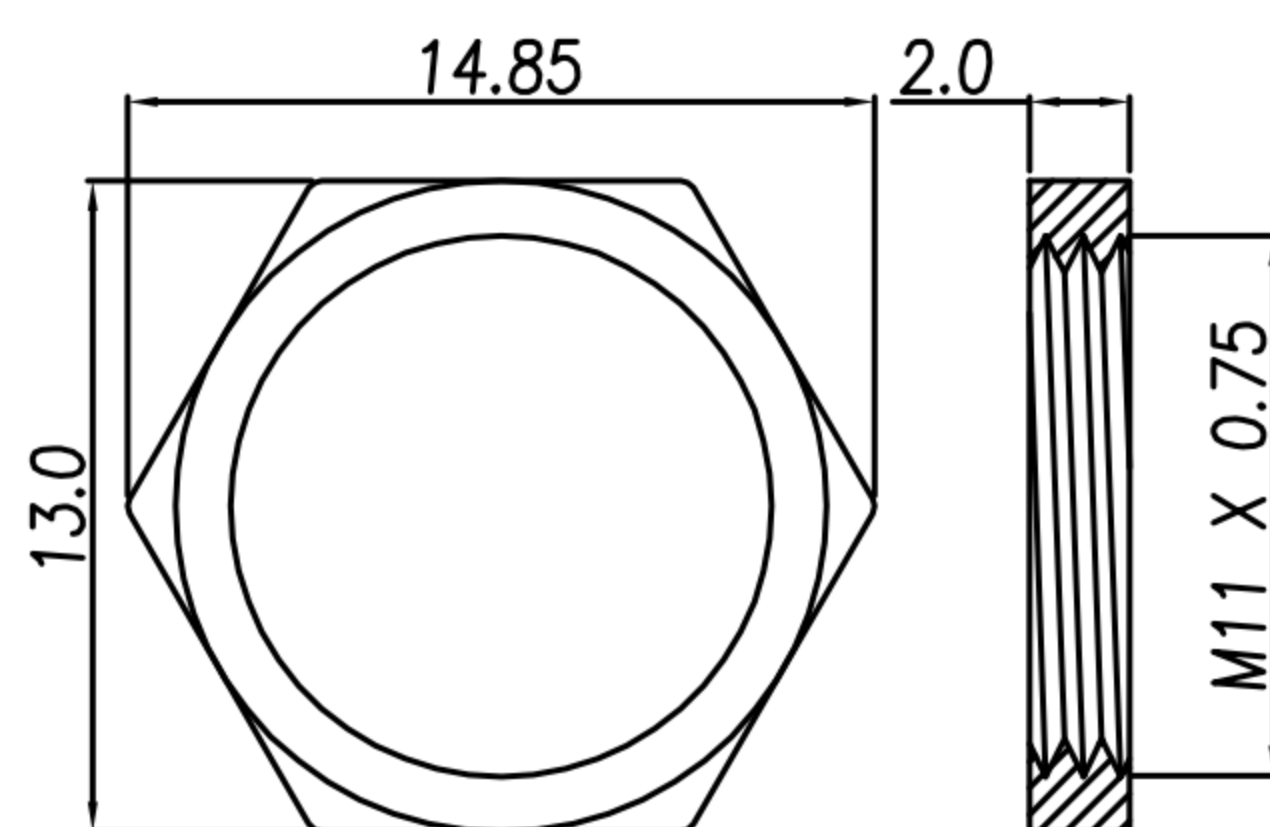
RECOMMENDED MOUNTING HOLE



HOUSING+CONTACT+SPRING+SHELL



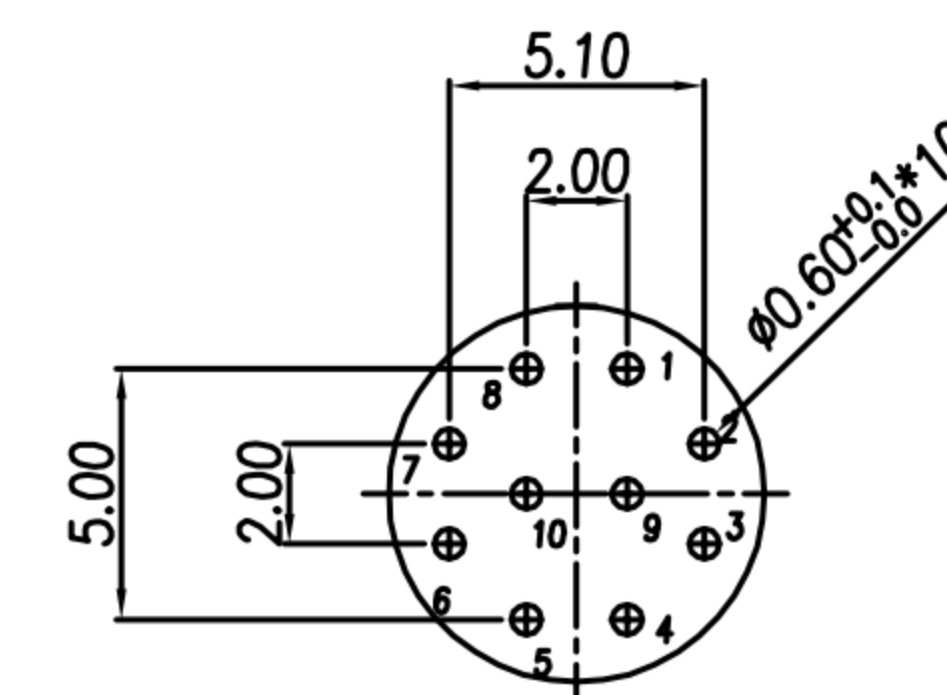
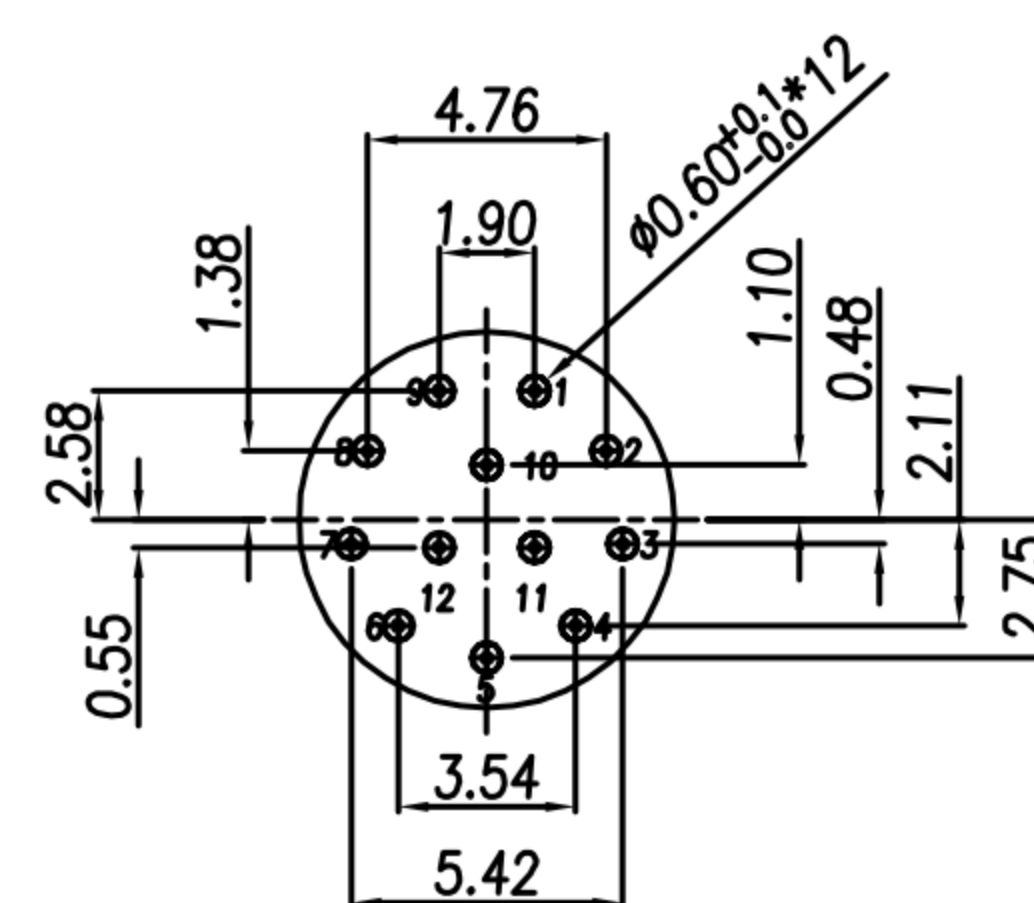
WASHER



NUT

TABLE A

CONTACT ARRANGEMENT & DIMENSIONS(FRONT VIEW)



DI-12F3-02-11

端子金10u"

DI-12F3-01

端子表金

DI-10F3-01

1. MATERIAL :

- 1-1. HOUSING : NYLON66 UL94V-0; COLOR : BLACK
- 1-2. CONTACT : BRASS
- 1-3. SHELL : ZINC ALLOY
- 1-4. SPRING : STAINLESS STEEL
- 1-5. WASHER : PHOSPHOR BRONZE
- 1-6. NUT : BRASS

2. FINISH :

- 2-1. CONTACT : SEE TABLE A
- 2-2. SHELL : NICKEL
- 2-3. WASHER : NICKEL
- 2-4. NUT : NICKEL

3. ELECTRICAL SPECIFICATION :

- 3-1. Rated current : 2A
- 3-2. Rated voltage : 100V AC / 140V DC

4. Environmental :

- 4-1. Operation Temperature : -25℃~85℃

DRAWN	Mark Kao	APPVL	Ku Chou	UNIT	mm	TOLERANCE				TITLE	DIN (F) 端子			SHEET	
CHK'D	Emily Suen			SCALE	1:1					PART NO.	SEE TABLE A	DWG NO.	QC5484	VERSION	