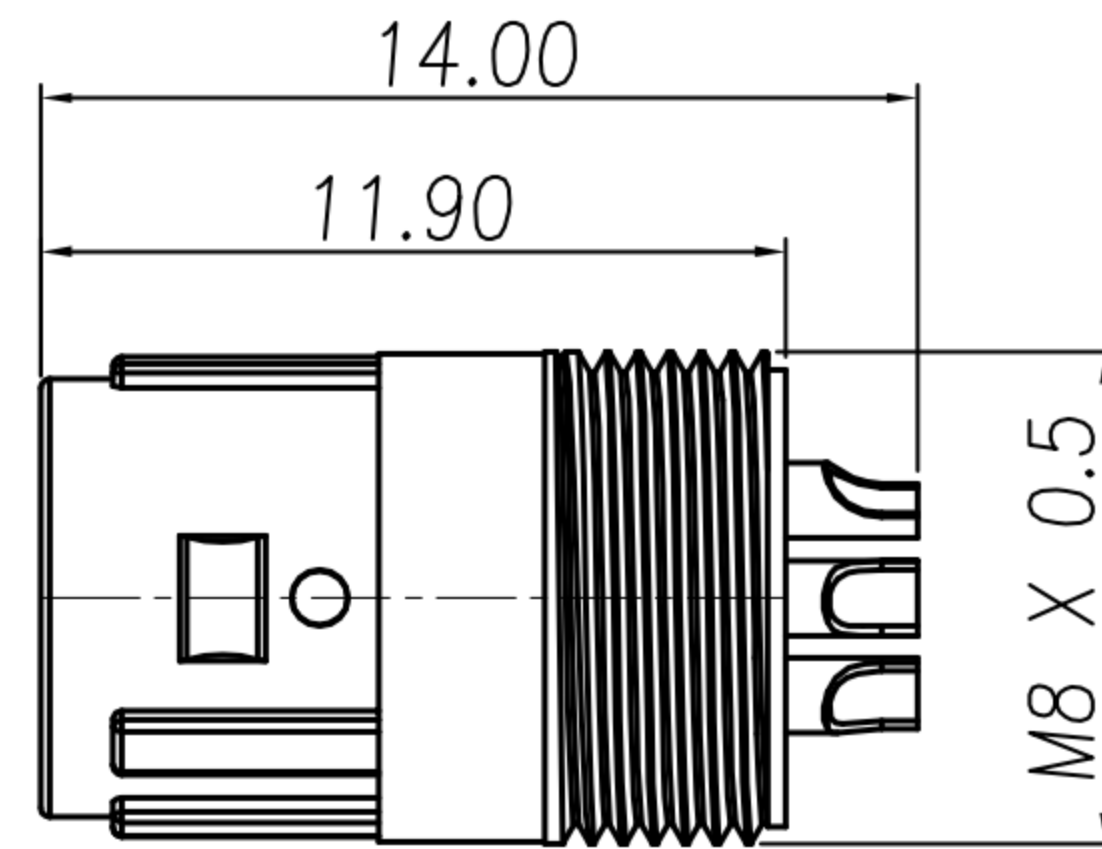
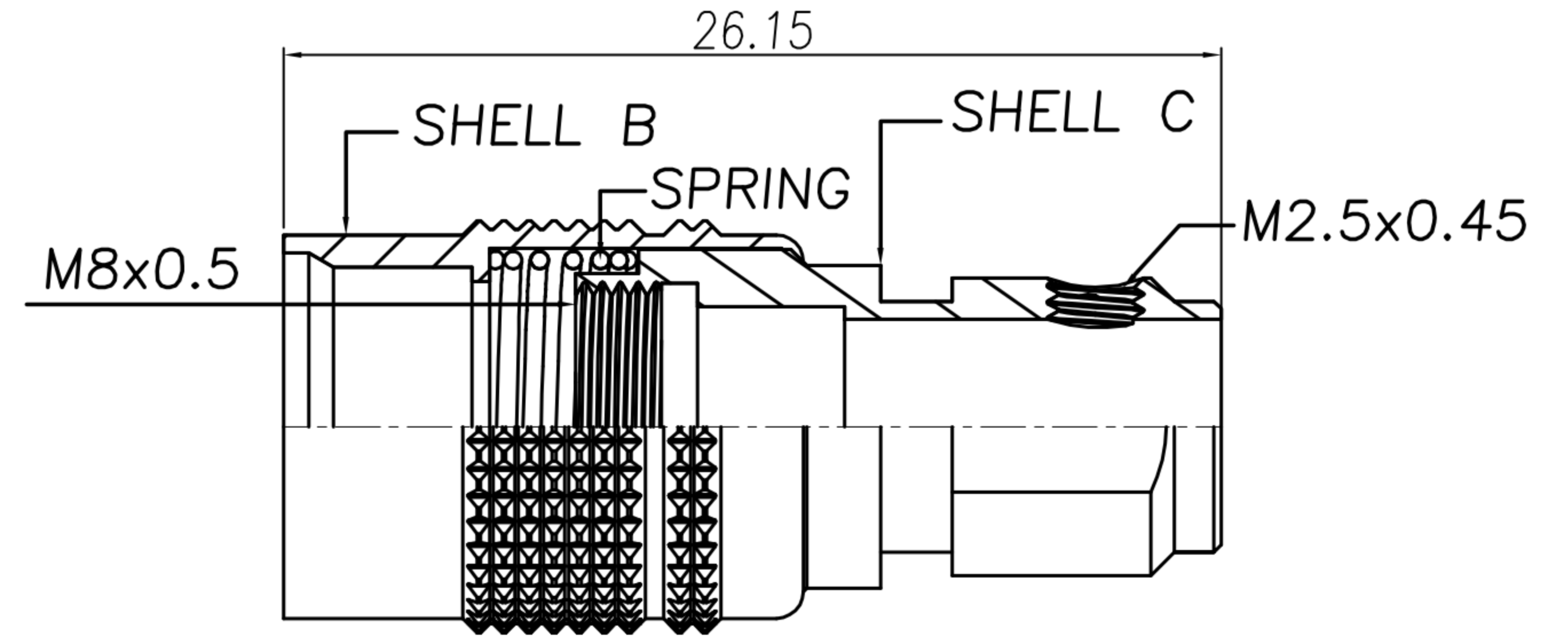
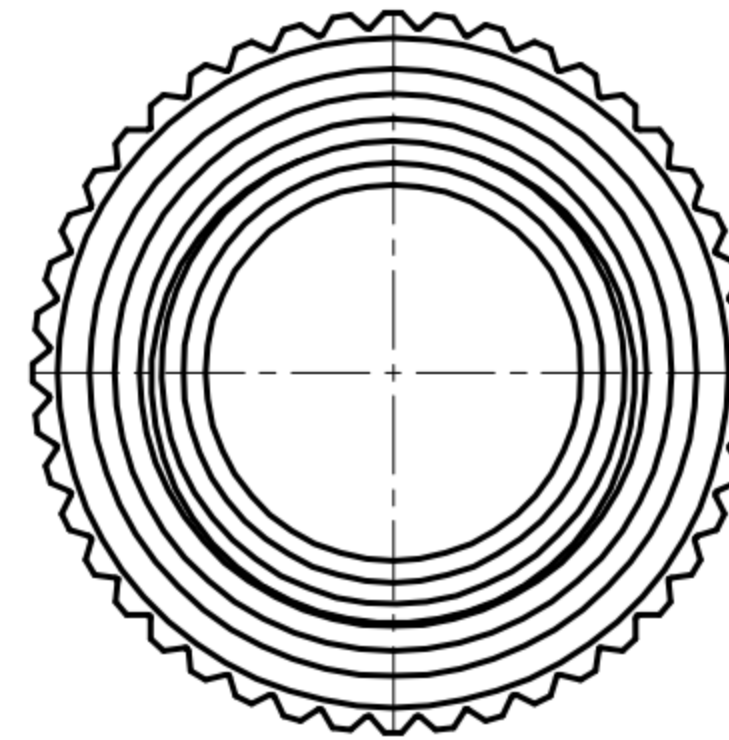


CUSTOMER DRAWING

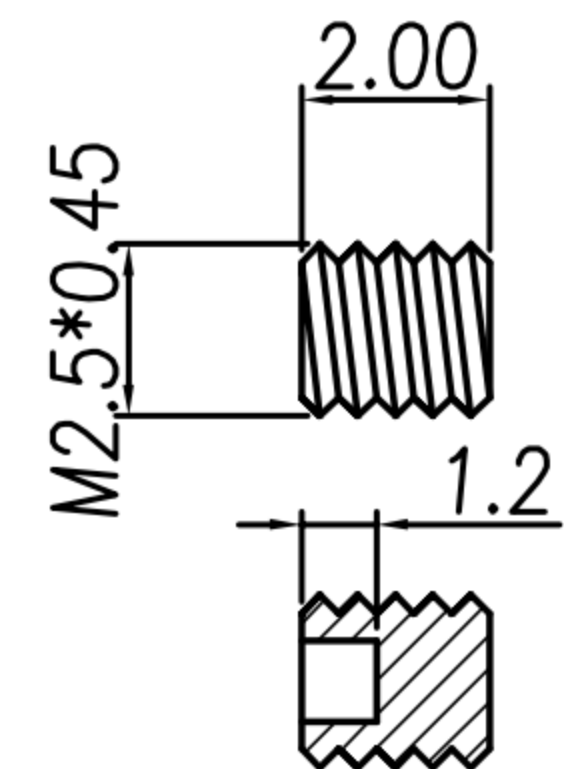
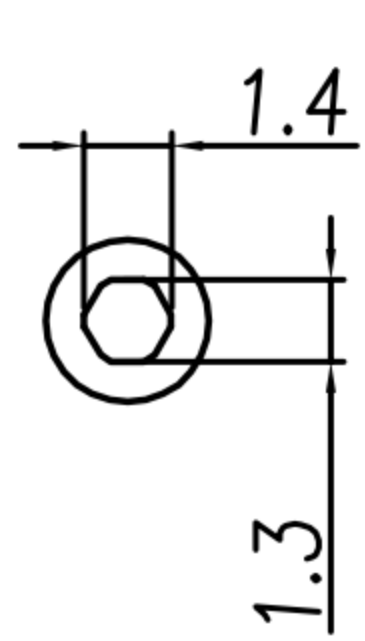
REV.	DESCRIPTION	APPROVED BY	DATE	ECN NO.
A	RELEASE	Emily Suen	22/11/11'	
B	CHANGE MATERIAL	Emily Suen	19/09/22'	
C				
D				



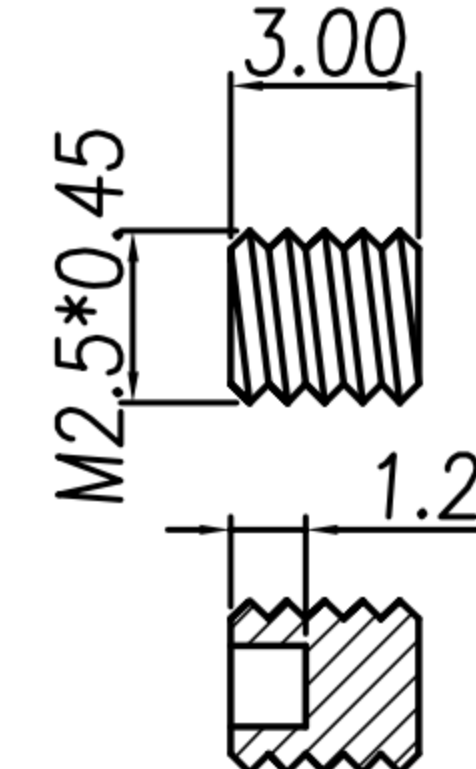
HOUSING + CONTACT + SHELL A



SHELL B + SHELL C + SPRING

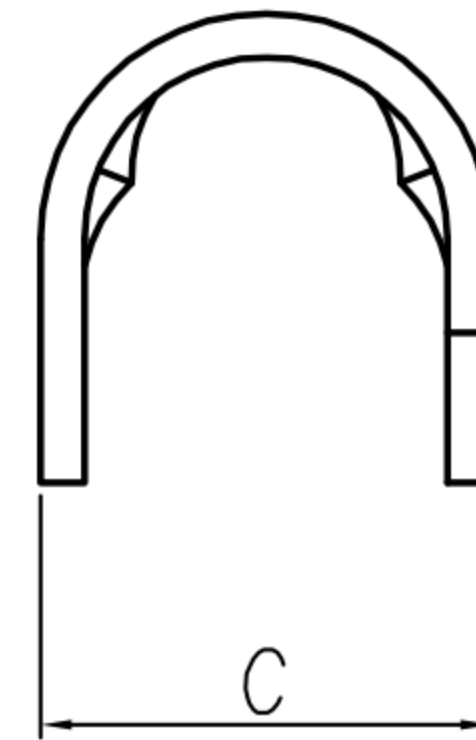
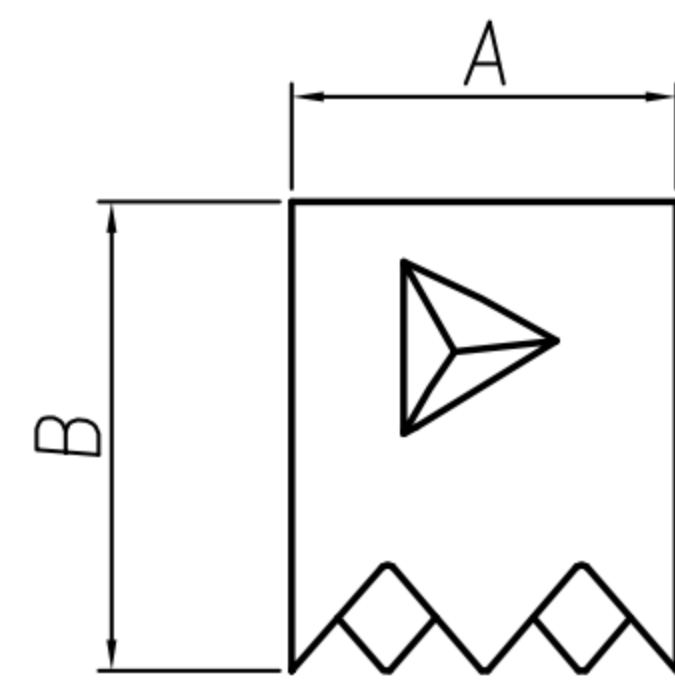


OY-DM0649



OY-DM0545

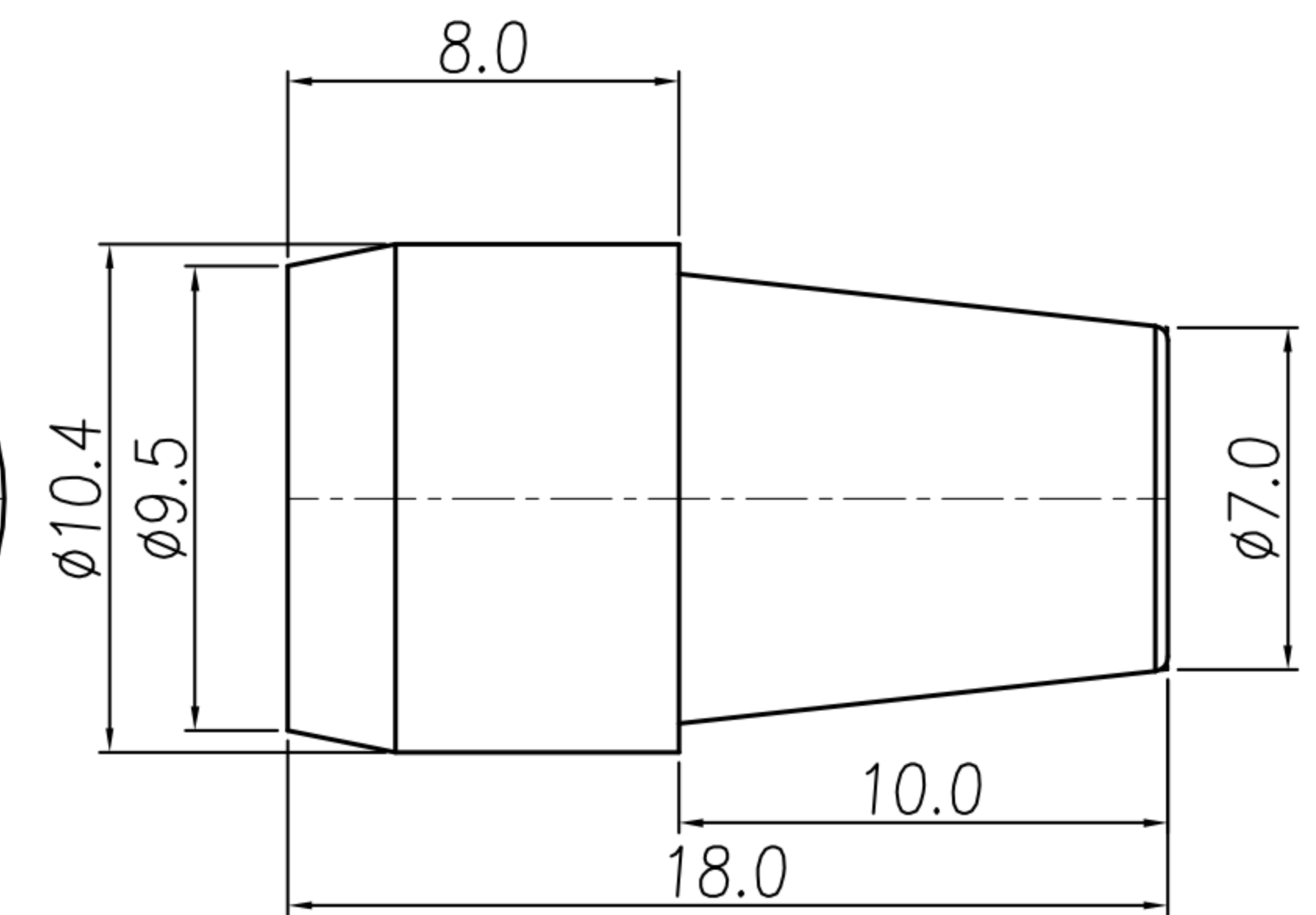
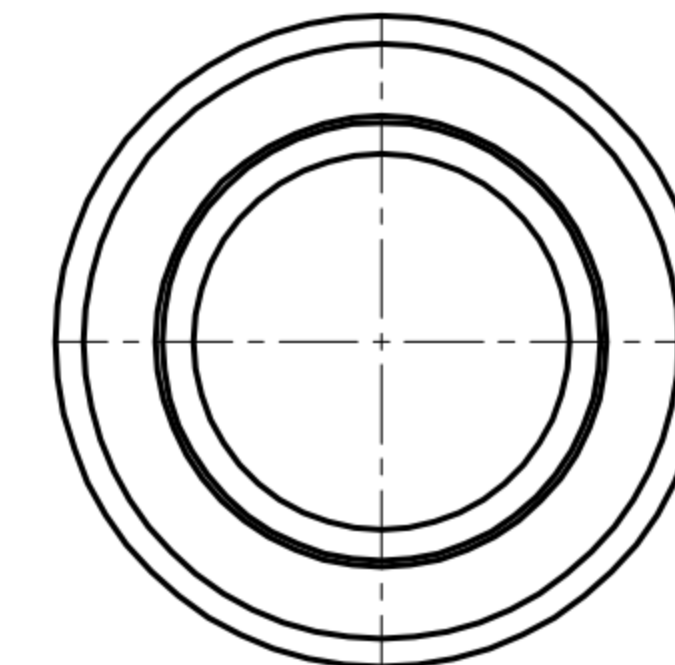
SCREW



CRAMP

OY-WP0371

OY-DM0639



SR

	A	B	C
OY-WP0371	6.1	7.5	7.8
OY-DM0639	4.0	6.0	6.5

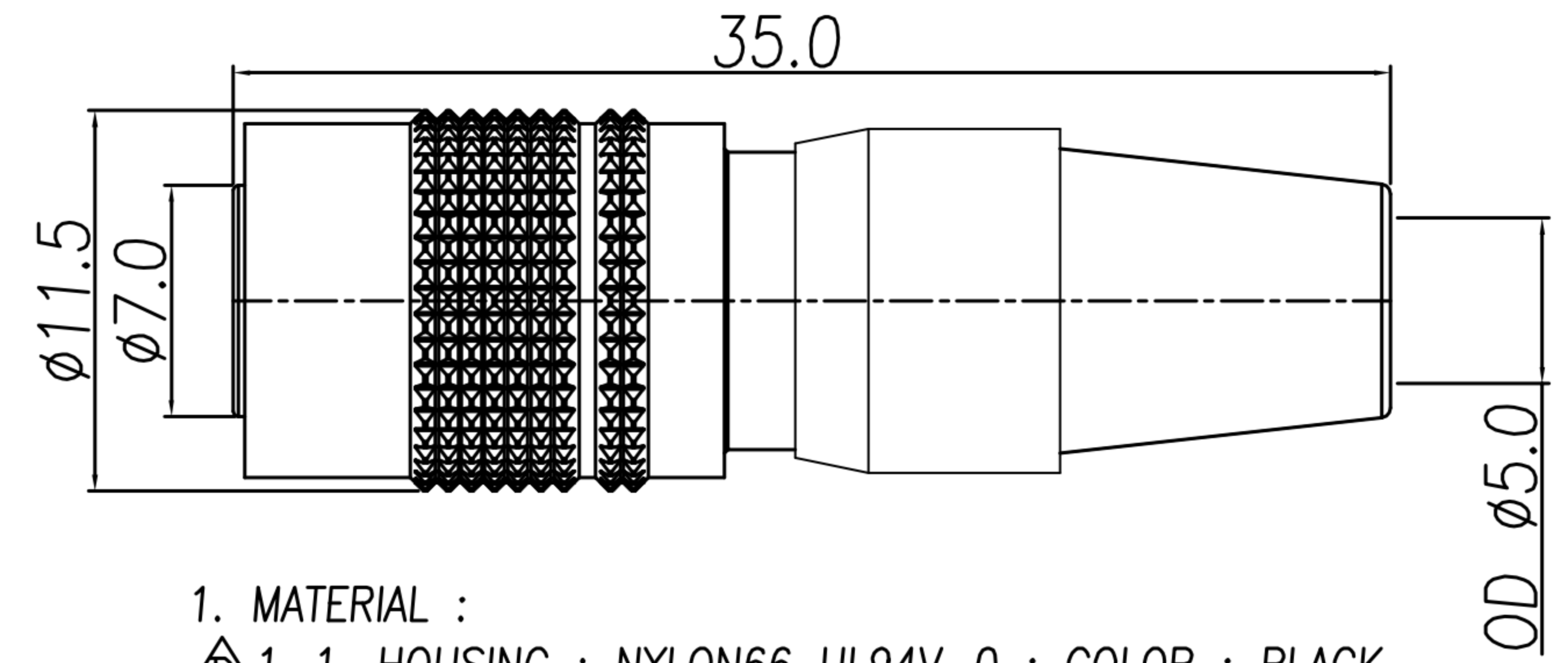
DRAWN	Mark Kao	APPV'L	Ku Chou	UNIT	mm	TOLERANCE .x ±0.20 .xx ±0.10 .xxx ±0.05 .xxxx ±0.03 ANGULA ±1°		广东科斯达电子科技有限公司 GUANG DONG KE SI DA ELECTRONIC TECHNOLOGY CO., LTD.	TITLE	DIN (F) PLUG 插孔式 (SHELL SIZE 7mm)			SHEET	2
CHK'D	Emily Suen			PART NO.	SEE TABLE A				DWG NO.	QC5663	VERSION	B		

CUSTOMER DRAWING

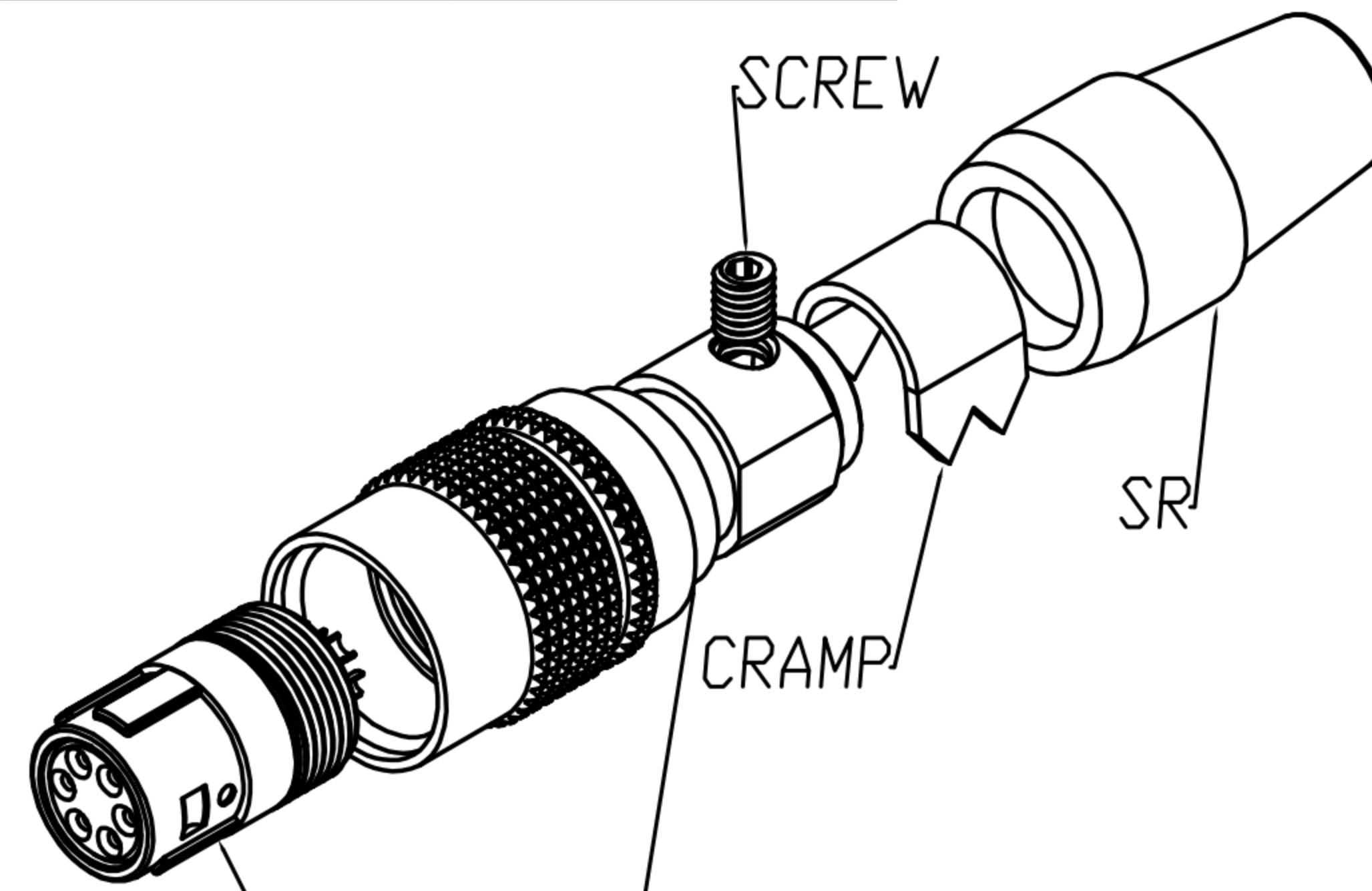
REV.	DESCRIPTION	APPROVED BY	DATE	ECN NO.
△A	RELEASE	Emily Suen	22/11/11'	
△B	CHANGE MATERIAL	Emily Suen	19/09/22'	
△C				
△D				

TABLE A

CONTACT ARRANGEMENT(FRONT VIEW)			
DI-04F2-04	DI-05F2-01	DI-06F2-05	DI-07F2-01
CONTACT ARRANGEMENT(FRONT VIEW)			
DI-06F2-08 (小線夾)			



- MATERIAL :
 - △B 1-1. HOUSING : NYLON66 UL94V-0 ; COLOR : BLACK
 - 1-2. CONTACT : PHOSPHOR BRONZE
 - 1-3. SHELL A : ZINC ALLOY
 - 1-4. SHELL B : BRASS
 - 1-5. SHELL C : BRASS
 - 1-6. SPRING : STAINLESS STEEL
 - 1-7. SCREW : ALLOY STEEL
 - 1-8. CRAMP : BRASS
 - 1-9. SR : NBR ; COLOR : BLACK
- FINISH :
 - 2-1. CONTACT : GOLD FLASH
 - 2-2. SHELL A : NICKEL
 - 2-3. SHELL B : SATIN NICKEL
 - 2-4. SHELL C : NICKEL
 - 2-5. SPRING : NICKEL
 - 2-6. SCREW : NICKEL
- ELECTRICAL SPECIFICATION :
 - 3-1. Rated current : 2A
 - 3-2. Rated voltage : 4PIN 150V AC / 200V DC ;
5~7PIN 100V AC / 140V DC
- Environmental :
 - 4-1. Operation Temperature : -25℃~85℃

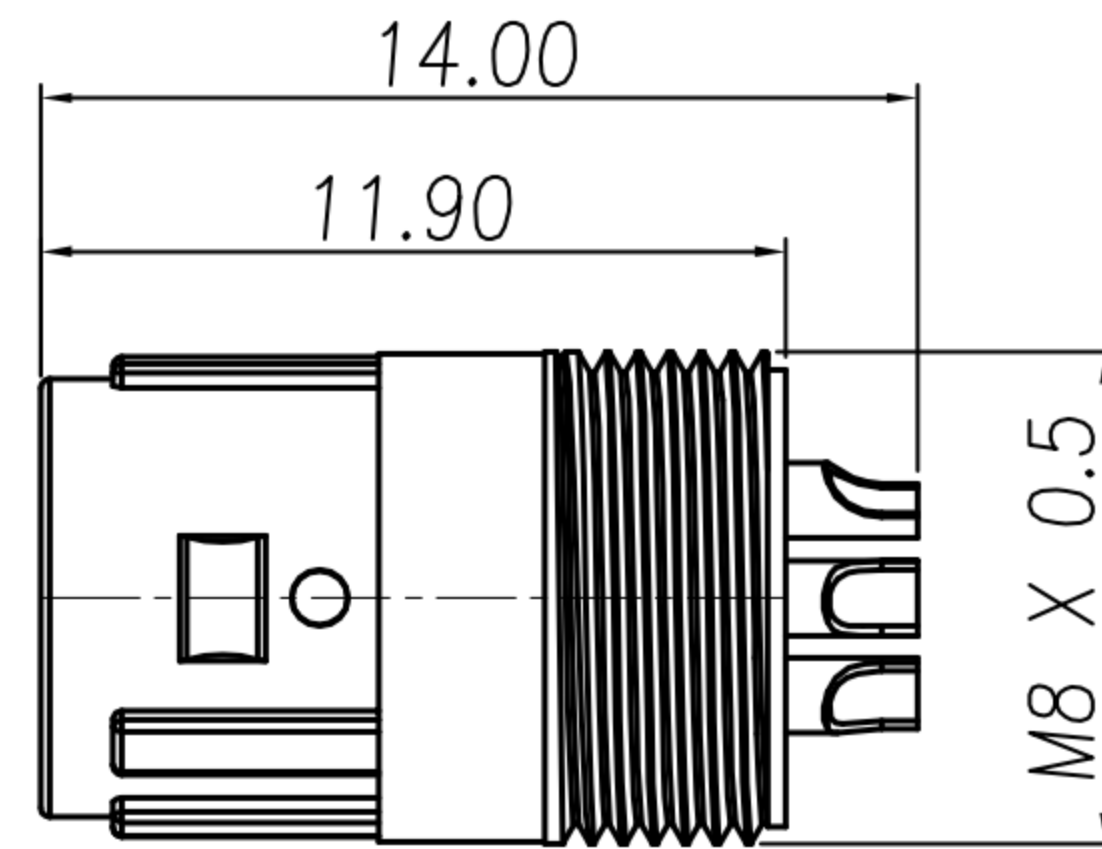


HOUSING + CONTACT + SHELL A
SHELL B + SHELL C + SPRING

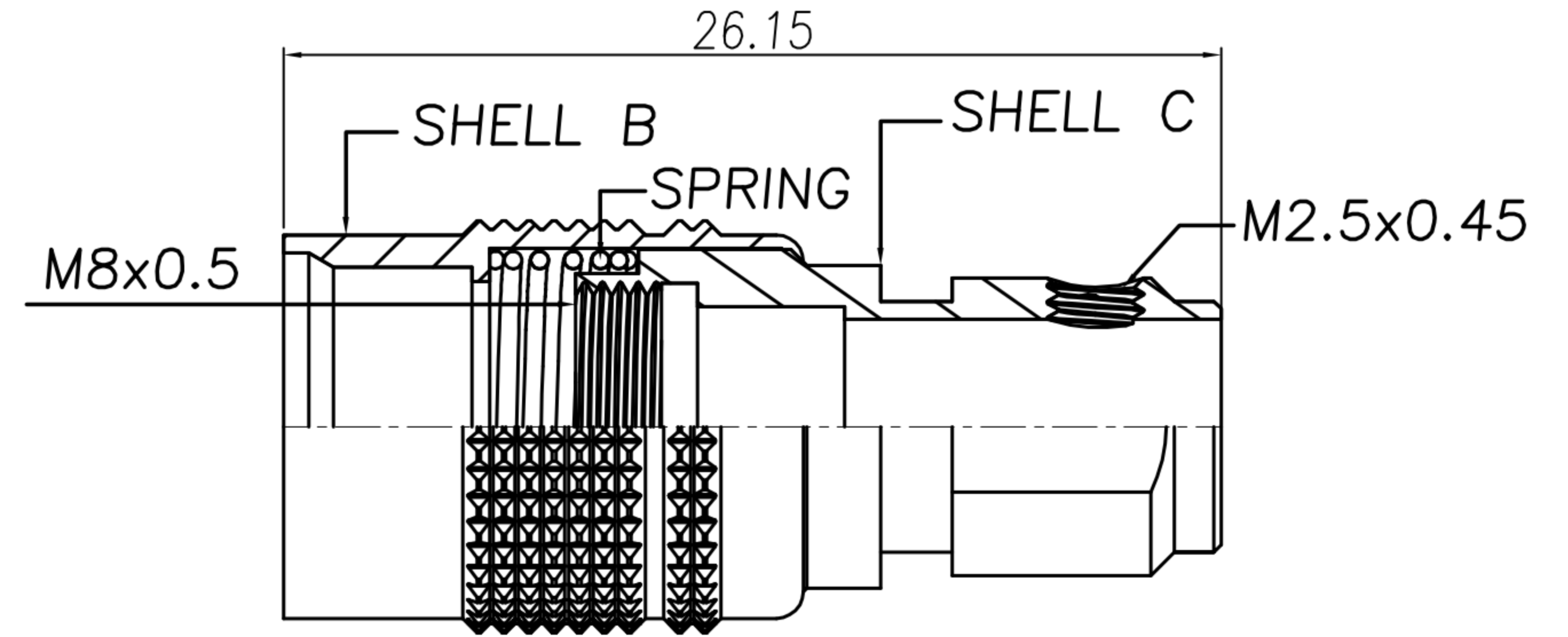
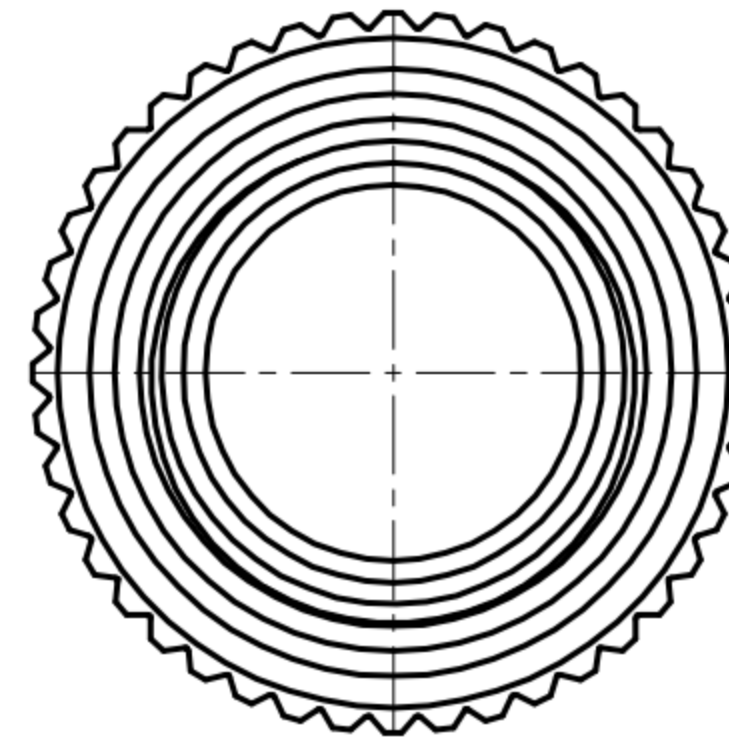
DRAWN	Mark Kao	APPV'L	Ku Chou	UNIT	mm	TOLERANCE		广东科斯达电子科技有限公司 GUANG DONG KE SI DA ELECTRONIC TECHNOLOGY CO., LTD.	TITLE	DIN (F) PLUG 插配線式(SHELL SIZE 7mm)			SHEET
CHK'D	Emily Suen			SCALE	1:1	.x ±0.20 .xx ±0.10 .xxx ±0.05 .xxxx ±0.03 ANGULA ±1°			PART NO.	SEE TABLE A	DWG NO.	QC5663	1/2

CUSTOMER DRAWING

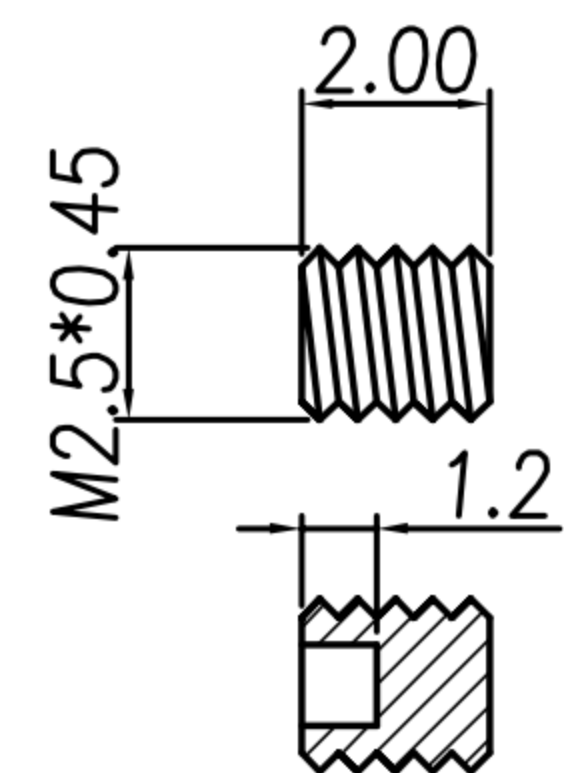
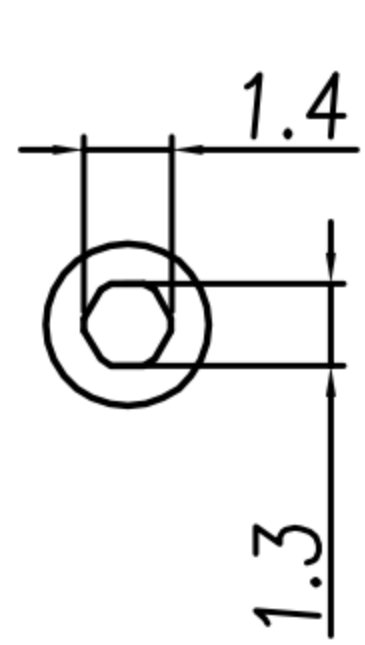
REV.	DESCRIPTION	APPROVED BY	DATE	ECN NO.
A	RELEASE	Emily Suen	22/11/11'	
B	CHANGE MATERIAL	Emily Suen	19/09/22'	
C				
D				



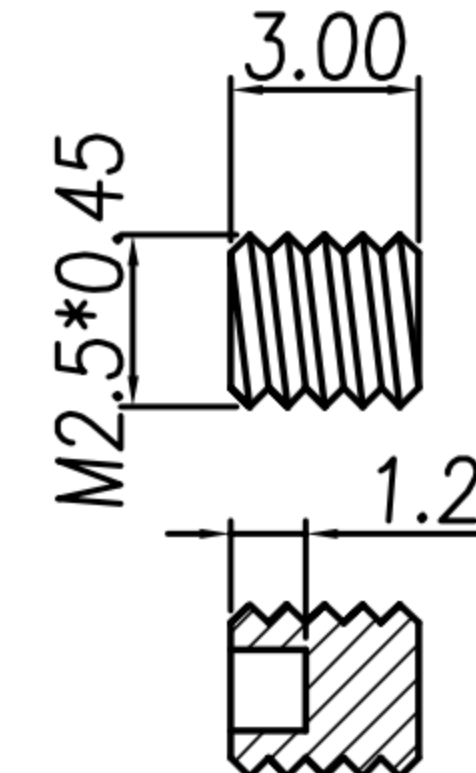
HOUSING + CONTACT + SHELL A



SHELL B + SHELL C + SPRING

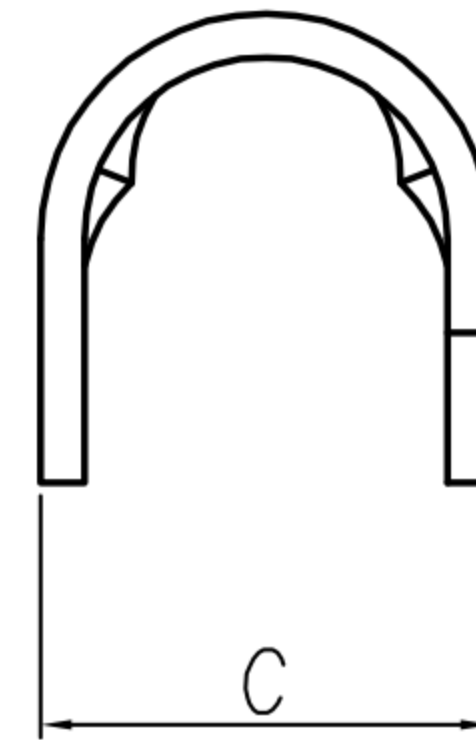
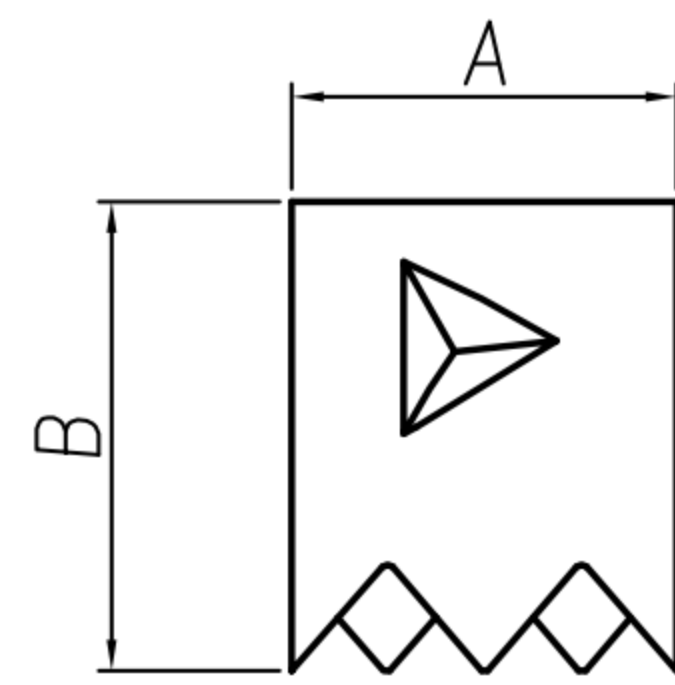


OY-DM0649



OY-DM0545

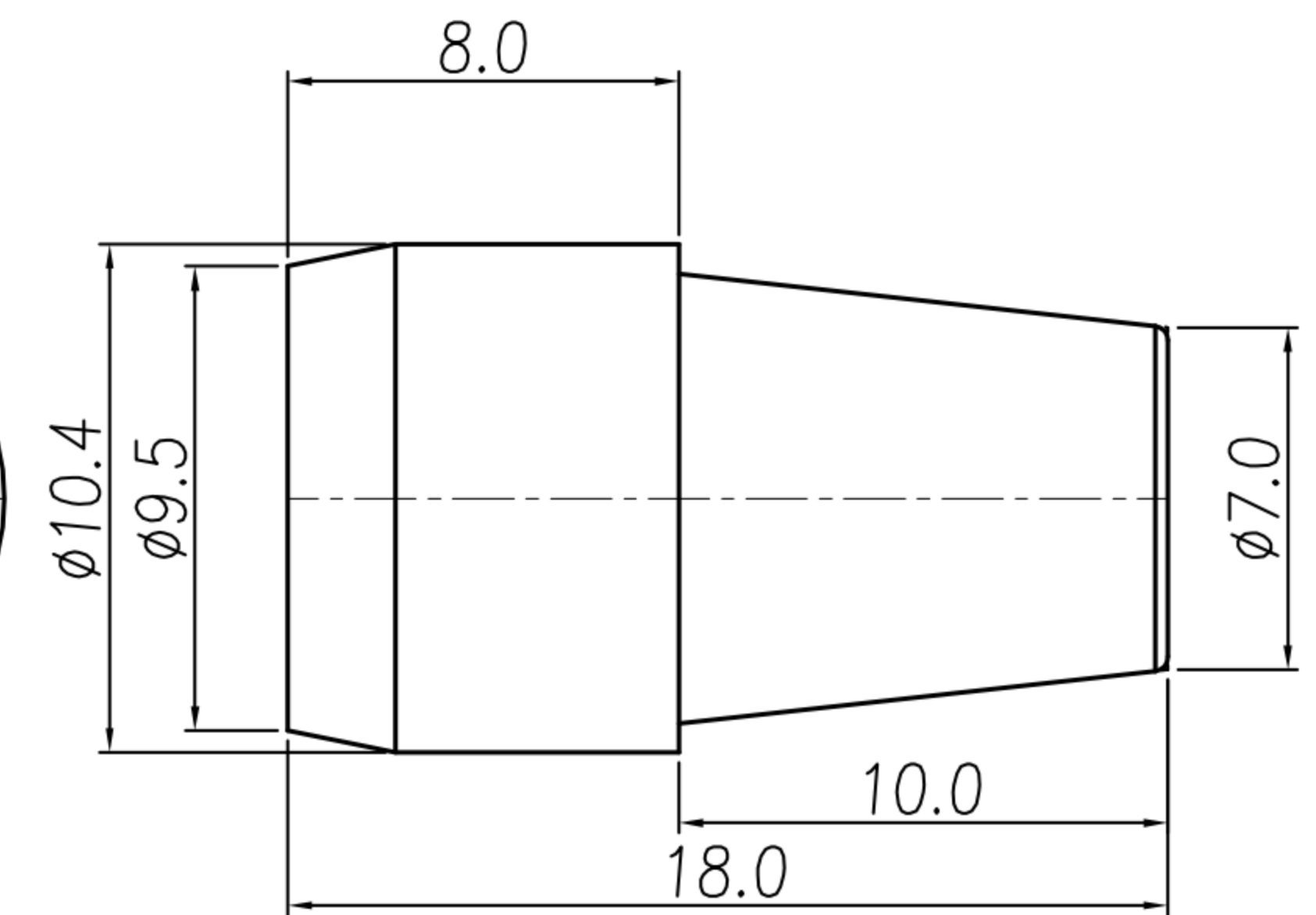
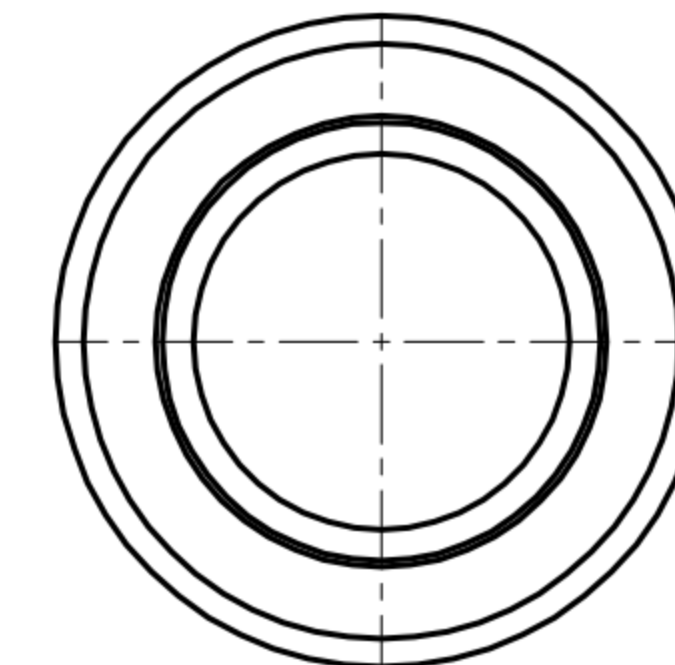
SCREW



CRAMP

OY-WP0371

OY-DM0639



SR

	A	B	C
OY-WP0371	6.1	7.5	7.8
OY-DM0639	4.0	6.0	6.5

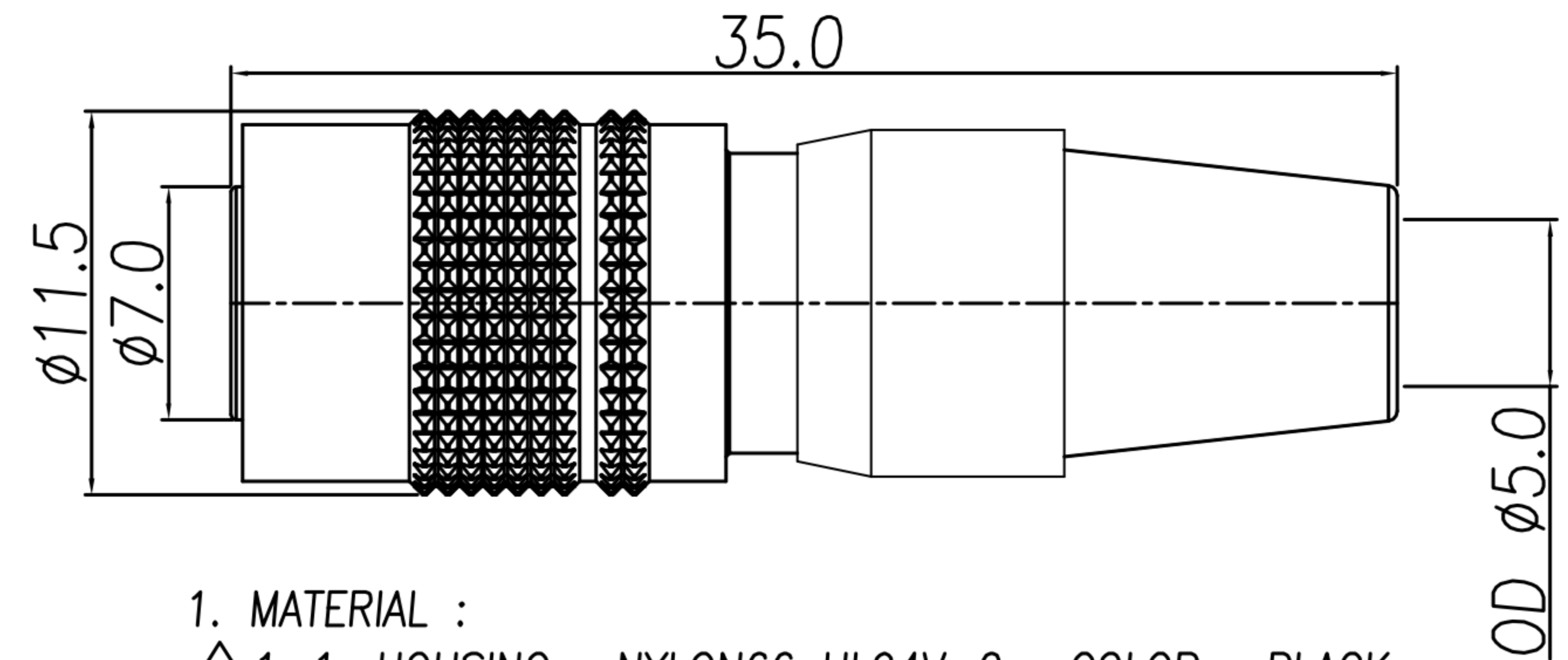
DRAWN	Mark Kao	APPV'L	Ku Chou	UNIT	mm	TOLERANCE .x ±0.20 .xx ±0.10 .xxx ±0.05 .xxxx ±0.03 ANGULA ±1°		广东科斯达电子科技有限公司 GUANG DONG KE SI DA ELECTRONIC TECHNOLOGY CO., LTD.	TITLE	DIN (F) PLUG 插孔式 (SHELL SIZE 7mm)			SHEET	2
CHK'D	Emily Suen			PART NO.	SEE TABLE A				DWG NO.	QC5663	VERSION	B		

CUSTOMER DRAWING

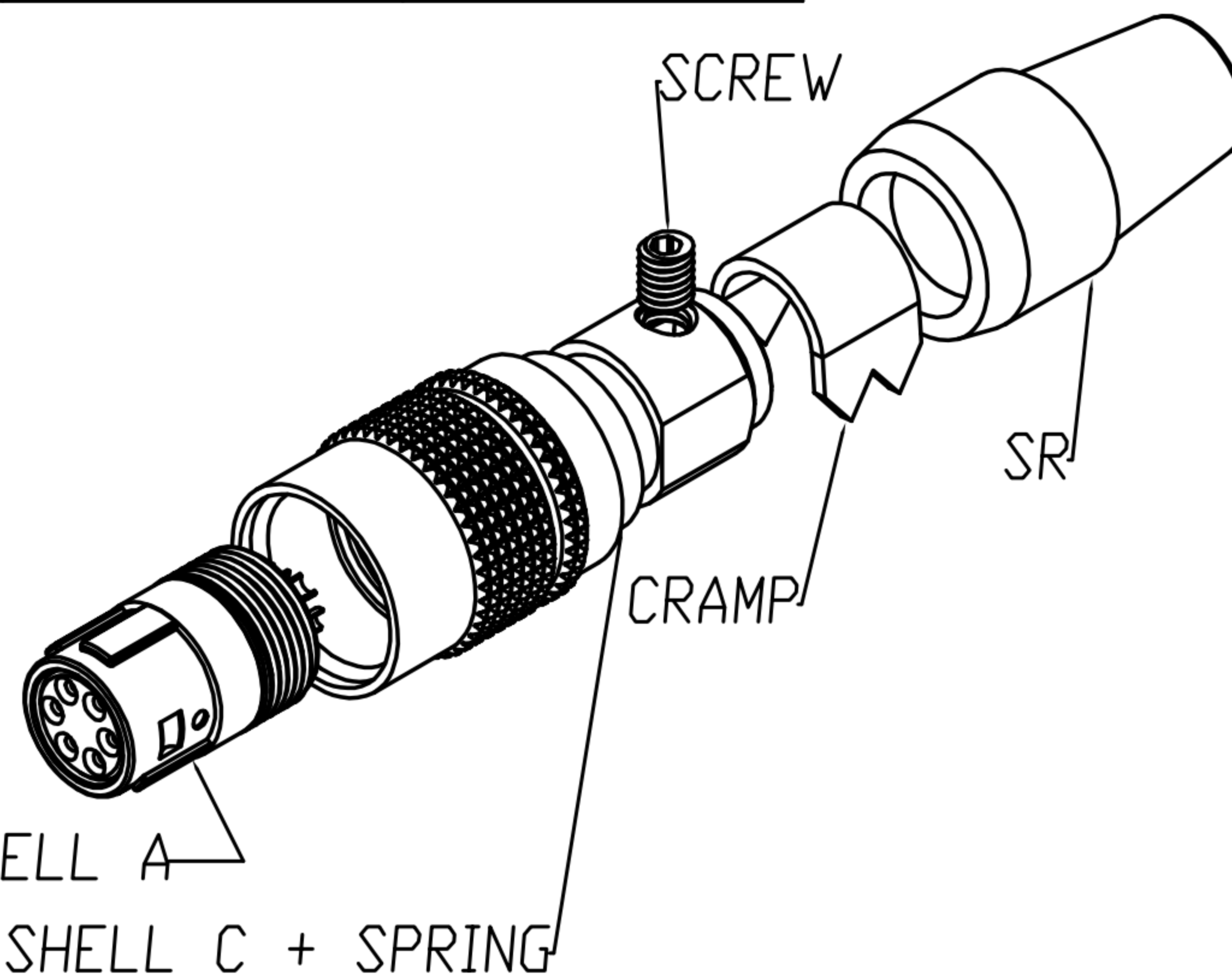
REV.	DESCRIPTION	APPROVED BY	DATE	ECN NO.
△A	RELEASE	Emily Suen	22/11/11'	
△B	CHANGE MATERIAL	Emily Suen	19/09/22'	
△C				
△D				

TABLE A

CONTACT ARRANGEMENT(FRONT VIEW)			
DI-04F2-04	DI-05F2-01	DI-06F2-05	DI-07F2-01
CONTACT ARRANGEMENT(FRONT VIEW)			
DI-06F2-08 (小線夾)			



- MATERIAL :
 - △B 1-1. HOUSING : NYLON66 UL94V-0 ; COLOR : BLACK
 - 1-2. CONTACT : PHOSPHOR BRONZE
 - 1-3. SHELL A : ZINC ALLOY
 - 1-4. SHELL B : BRASS
 - 1-5. SHELL C : BRASS
 - 1-6. SPRING : STAINLESS STEEL
 - 1-7. SCREW : ALLOY STEEL
 - 1-8. CRAMP : BRASS
 - 1-9. SR : NBR ; COLOR : BLACK
- FINISH :
 - 2-1. CONTACT : GOLD FLASH
 - 2-2. SHELL A : NICKEL
 - 2-3. SHELL B : SATIN NICKEL
 - 2-4. SHELL C : NICKEL
 - 2-5. SPRING : NICKEL
 - 2-6. SCREW : NICKEL
- ELECTRICAL SPECIFICATION :
 - 3-1. Rated current : 2A
 - 3-2. Rated voltage : 4PIN 150V AC / 200V DC ;
5~7PIN 100V AC / 140V DC
- Environmental :
 - 4-1. Operation Temperature : -25℃~85℃



HOUSING + CONTACT + SHELL A
SHELL B + SHELL C + SPRING

DRAWN	Mark Kao	APPV'L	Ku Chou	UNIT	mm	TOLERANCE			TITLE	DIN (F) PLUG 裝配線式(SHELL SIZE 7mm)		SHEET
CHK'D	Emily Suen			SCALE	1:1	.x ±0.20 .xx ±0.10 .xxx ±0.05 .xxxx ±0.03 ANGULA ±1°			PART NO.	SEE TABLE A	DWG NO.	QC5663

广东科斯达电子科技有限公司
GUANG DONG KE SI DA ELECTRONIC TECHNOLOGY CO., LTD.