

CUSTOMER DRAWING

REV.	DESCRIPTION	APPVL. BY	DATE	ECN NO.
△A	RELEASE	Fido Weng	29/12/15'	
△B				
△C				

步驟一:

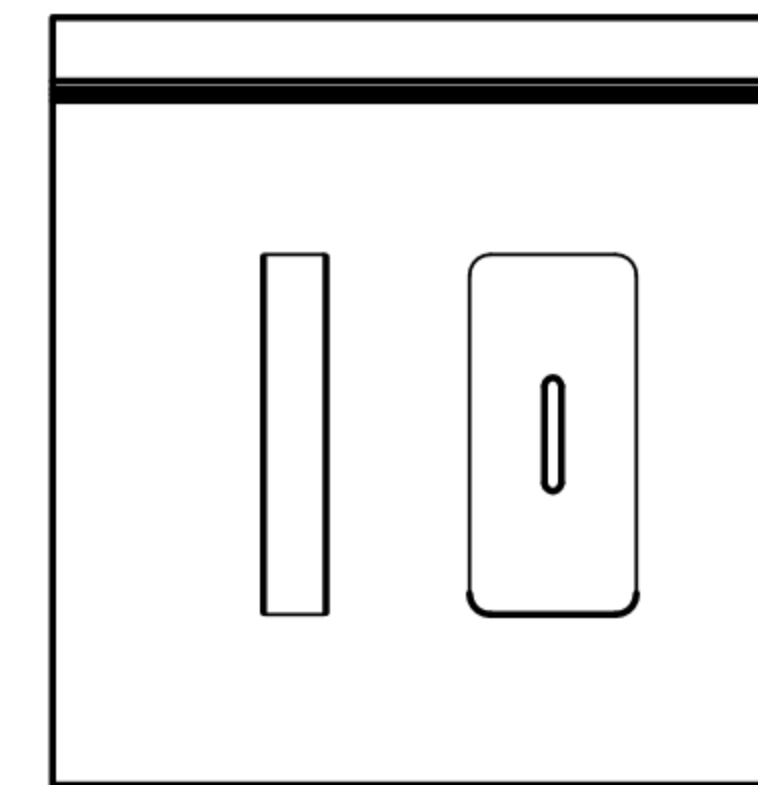
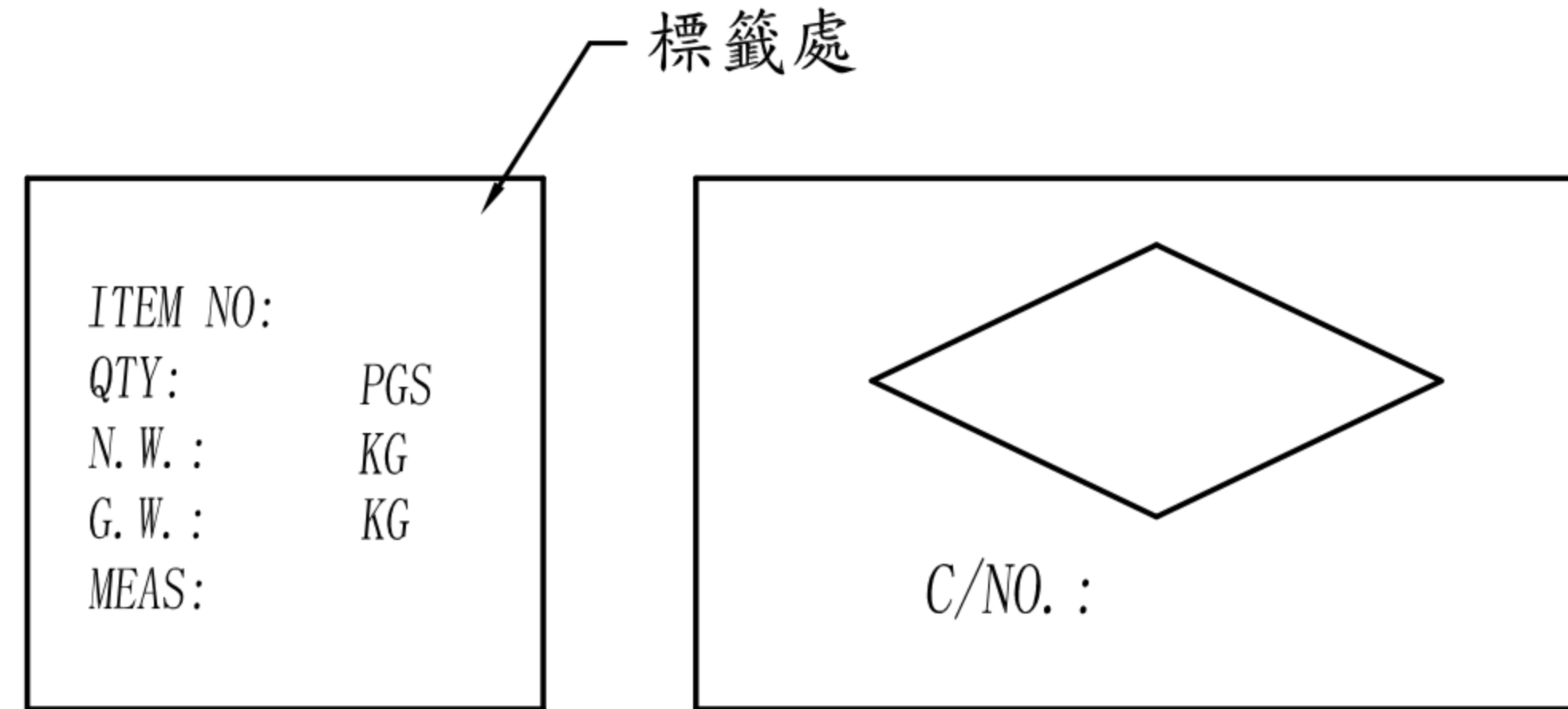
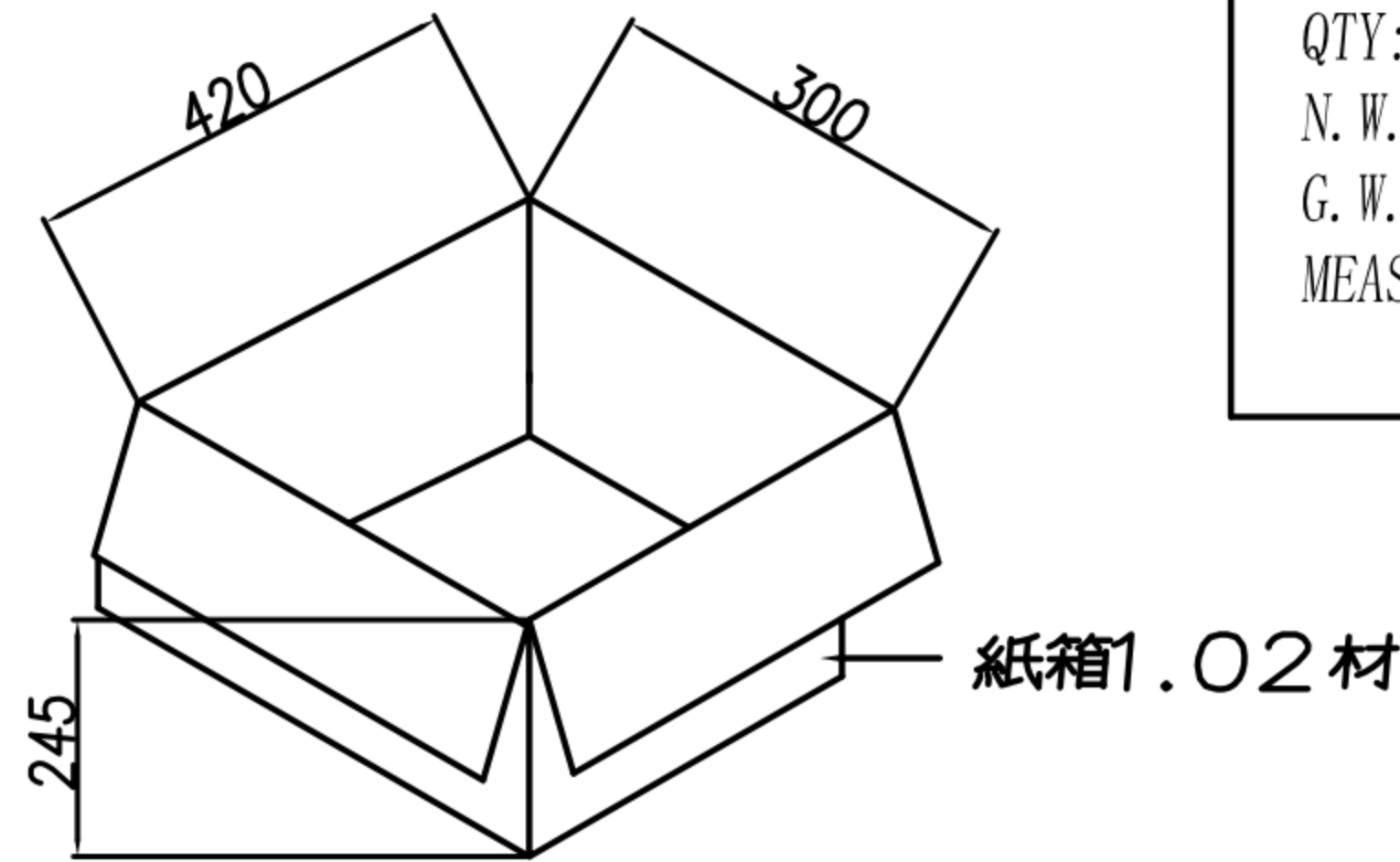
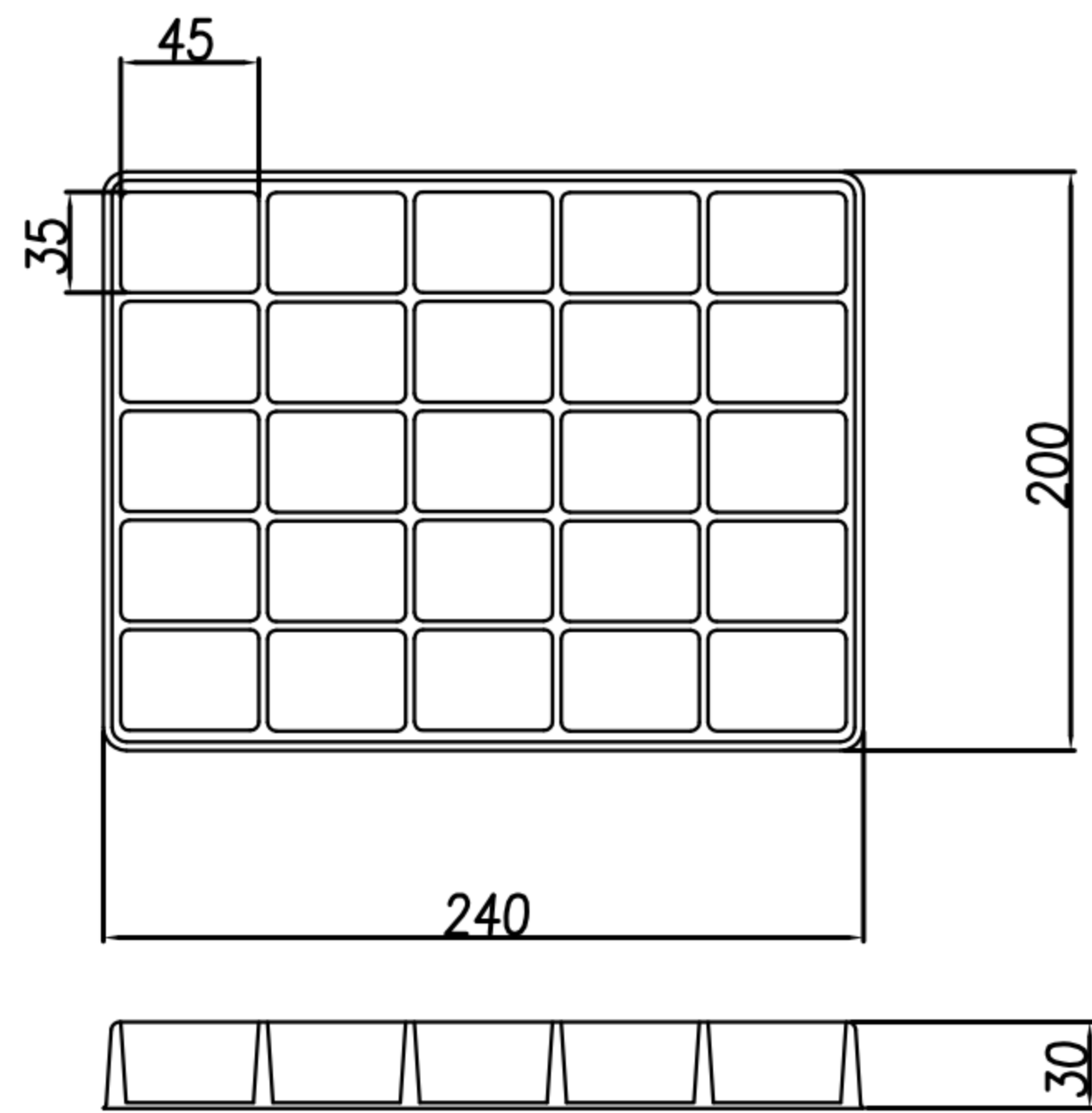
1. 將成品一一放入包裝盤內, 依同一方向置入.
2. 包裝方式, 如圖所示.
3. 一個包裝盤25pcs.
4. 裝滿盤後堆層至10盤止, 最上層為空盤做蓋子(共11盤)
5. 層疊11盤後, 在以膠膜固定

步驟二:

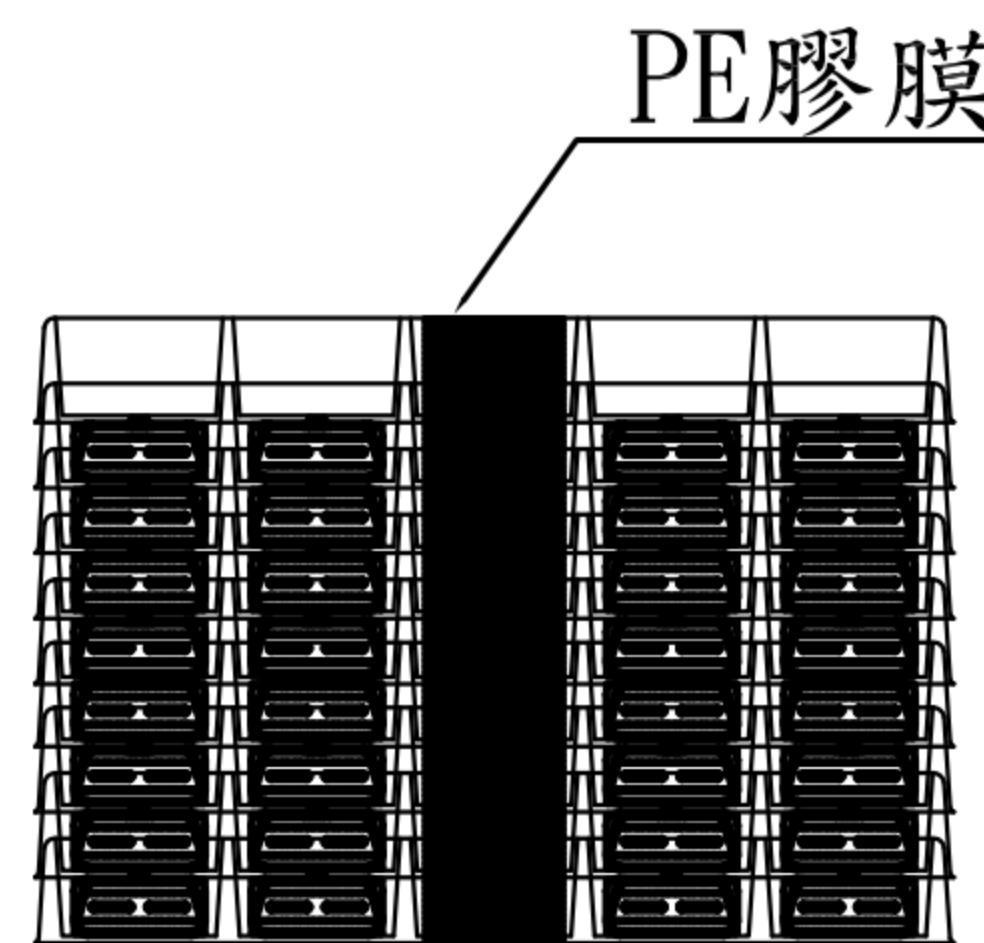
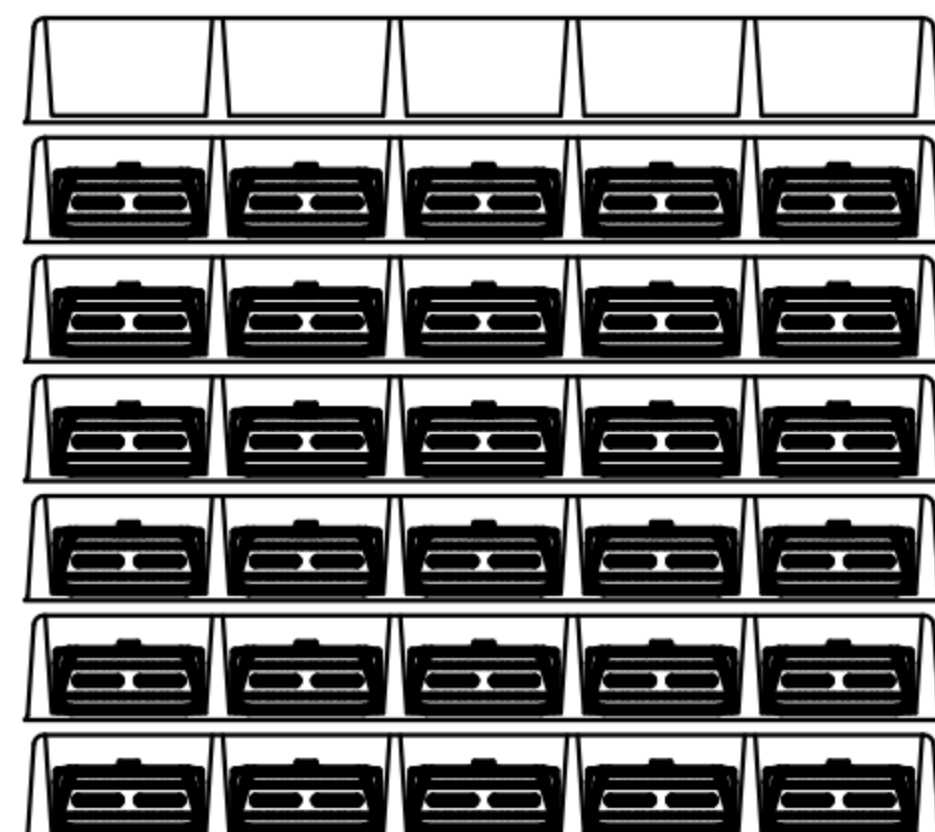
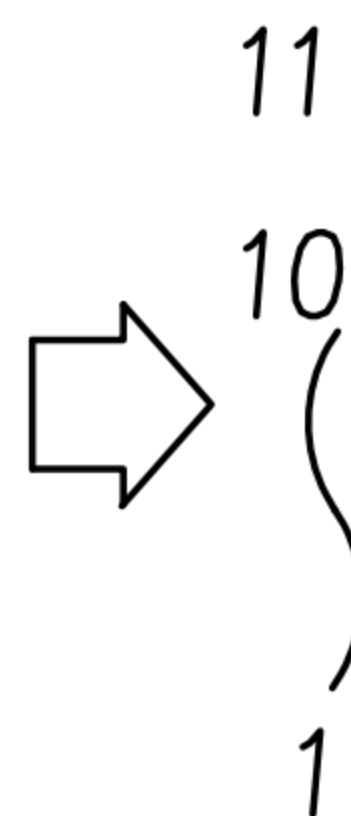
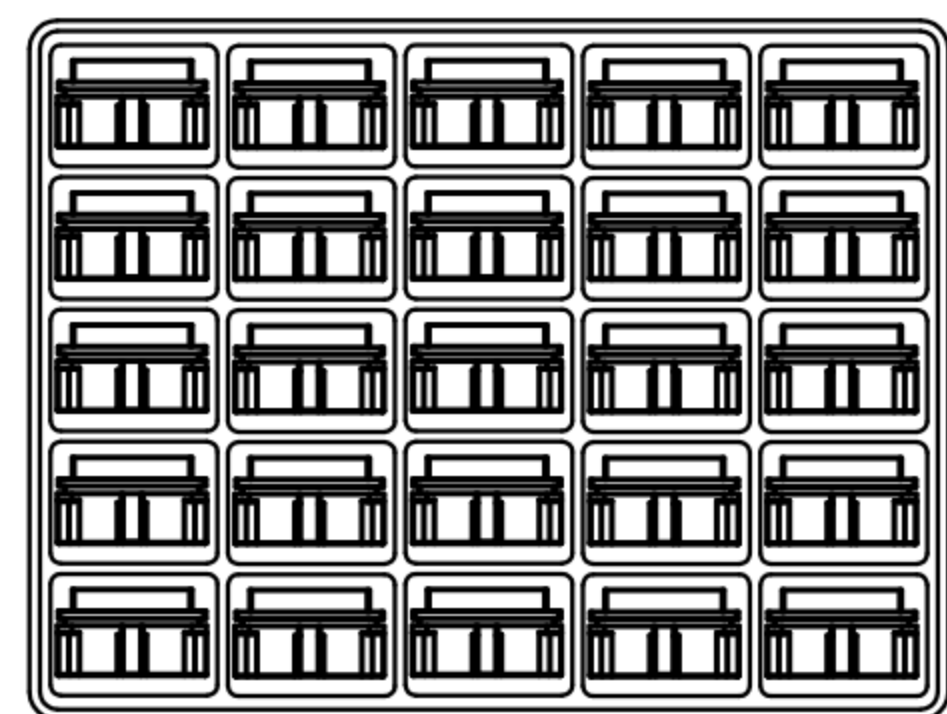
1. 一個紙箱可以裝20個包裝盤.
2. 每盤25pcs, 每箱500pcs.
3. 將包裝盤放紙箱中, 後封箱.

步驟三:

1. 用膠帶將紙箱封實.
2. 將標籤貼於紙箱上.



ON-TE0237 500PCS 一袋



實際層疊(含上層蓋為11層)

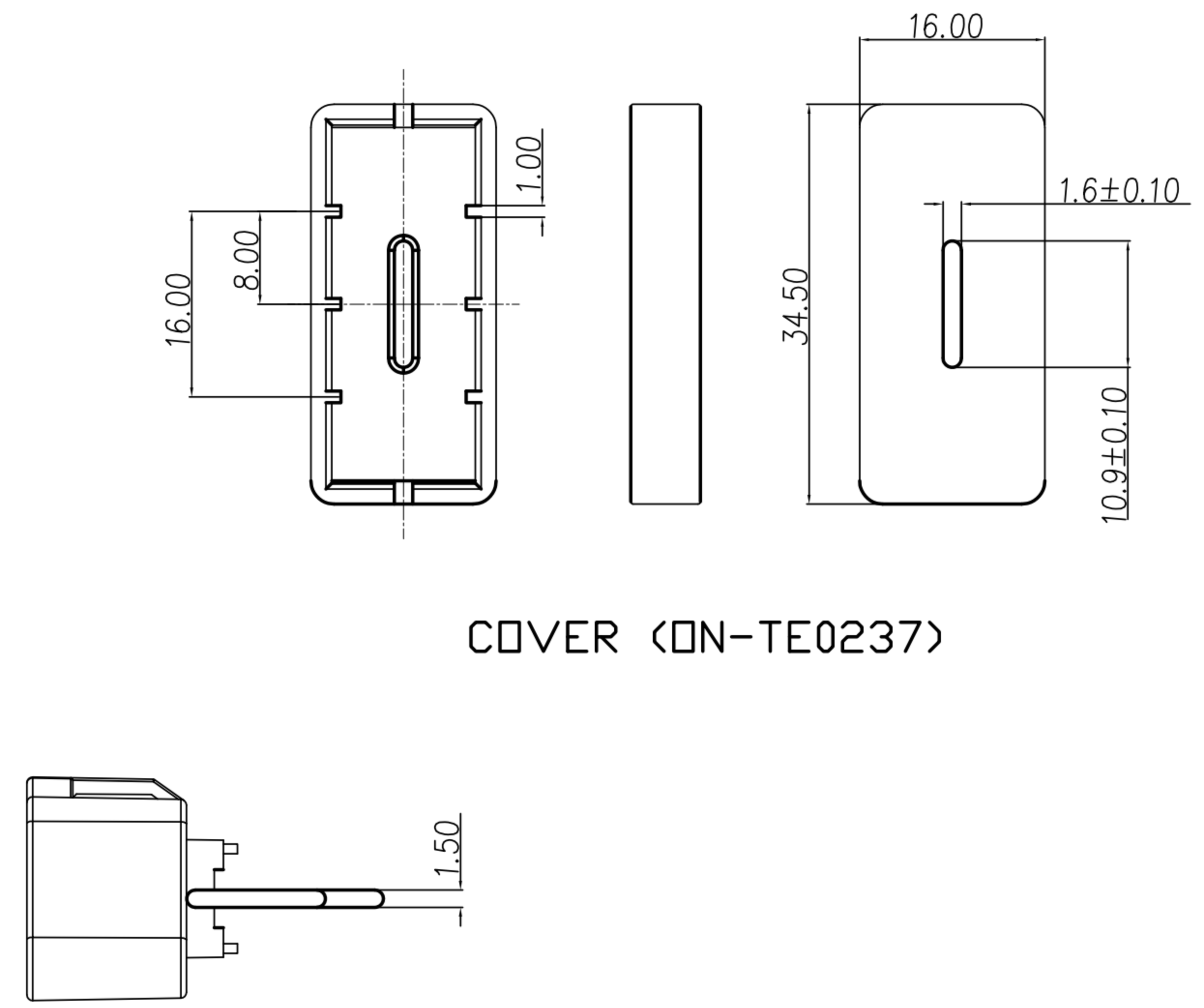
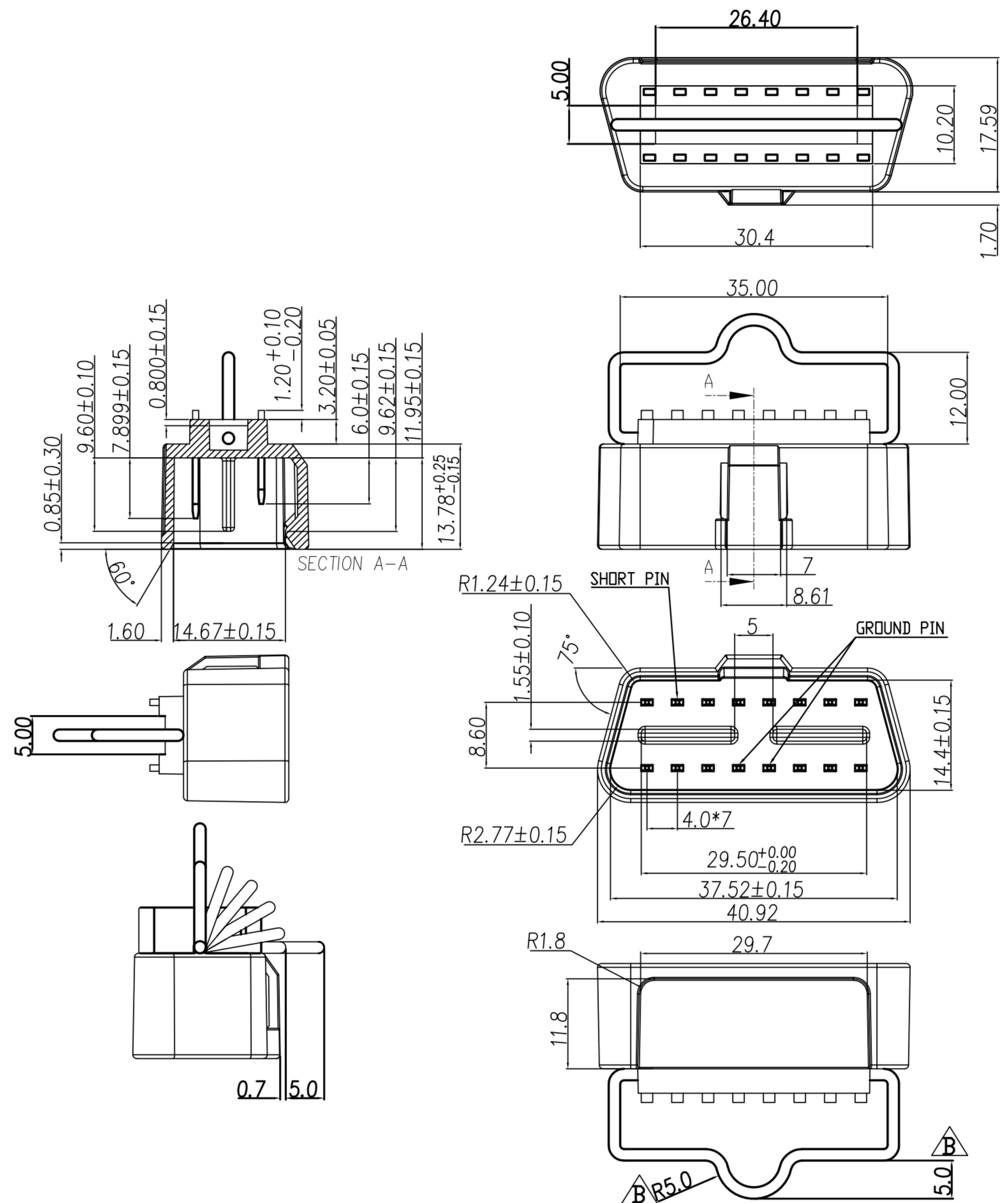
NOTE:

1. 若有未裝滿之零數箱, 必須以緩衝材塞滿.
2. 在搬運過程中要輕拿輕放.
3. 載運輸中不可堆放過多, 不可有重壓現象.
4. PE膠膜纏繞時不可緊綁.
5. 紙箱內層需裝防水袋.

DRAW	Ren	APPVL	Ku Chou	UNIT	mm	TOLERANCE		广东科斯达电子科技有限公司 GUANG DONG KE SI DA ELECTRONIC TECHNOLOGY CO., LTD.	TITLE	OBD2 16(M) 雙隔板成型式(附後蓋+拉環)			SHEET	2
CHECK	Emily Suen			SCALE	1:1	.x ±0.20 .xx ±0.10 .xxx ±0.05 .xxxx ±0.03 ANGULA ±1°			PART NO.	OBD2-16M1-43	DWG NO.	QC6058	VERSION	A

CUSTOMER DRAWING

REV.	DESCRIPTION	APPVL. BY	DATE	ECN NO.
A	RELEASE	Fido Weng	21/11/12'	
B	拉環尺寸變更	Fido Weng	23/11/16'	
C				



COVER (ON-TE0237)

- MATERIAL :
 - 1-1. HOUSING : NYLON66+ GF 15% UL94V-0 ; COLOR : BLACK
 - 1-2. CONTACT : BRASS
 - 1-3. PULL TAB : STAINLESS STEEL .
- FINISH :
 - 2-1. CONTACT : GOLD PLATED 30u" ON CONTACT AREA, BRIGHT TIN ON SOLDER TAILS, UNDERPLATED NICKEL.
- Environmental :
 - 3-1. Operation Temperature : -40℃~85℃

DRAW	KU	APPVL	Emily Suen	UNIT	mm	TOLERANCE		广东科斯达电子科技有限公司 GUANG DONG KE SI DA ELECTRONIC TECHNOLOGY CO., LTD.	TITLE	OBD2 16(M) 雙隔板成型式 (附後塞+拉環)			SHEET	1/1
CHECK	Emily Suen			SCALE	1:1	.x ±0.25 .xx ±0.15 .xxx ±0.05 .xxxx ±0.03 ANGULA ±1°			PART NO.	OBD2-16M1-43	DWG NO.	QC6058	VERSION	