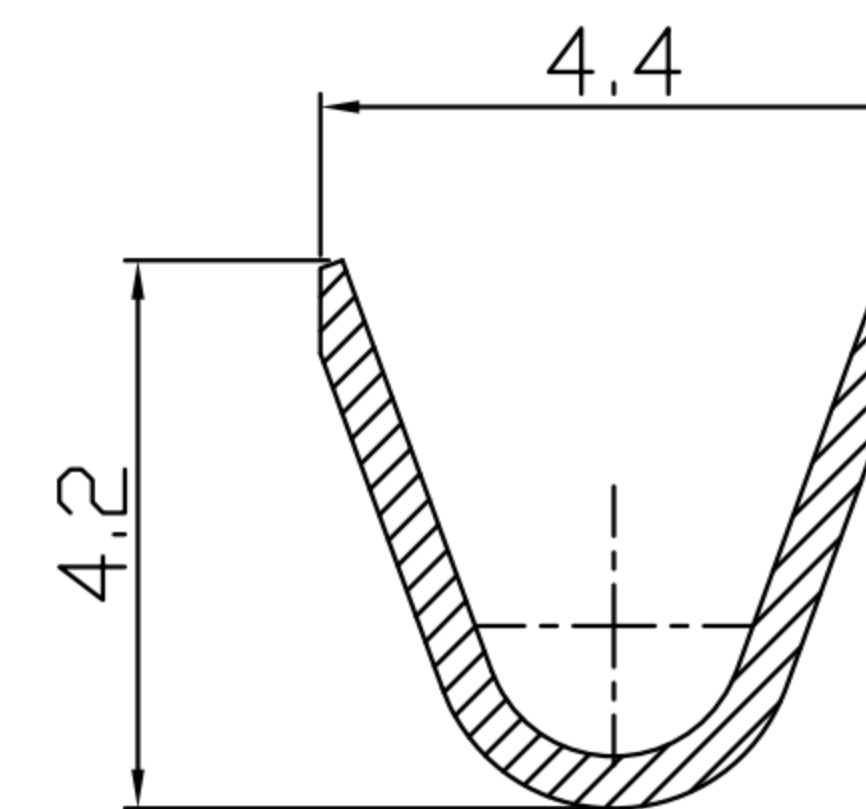
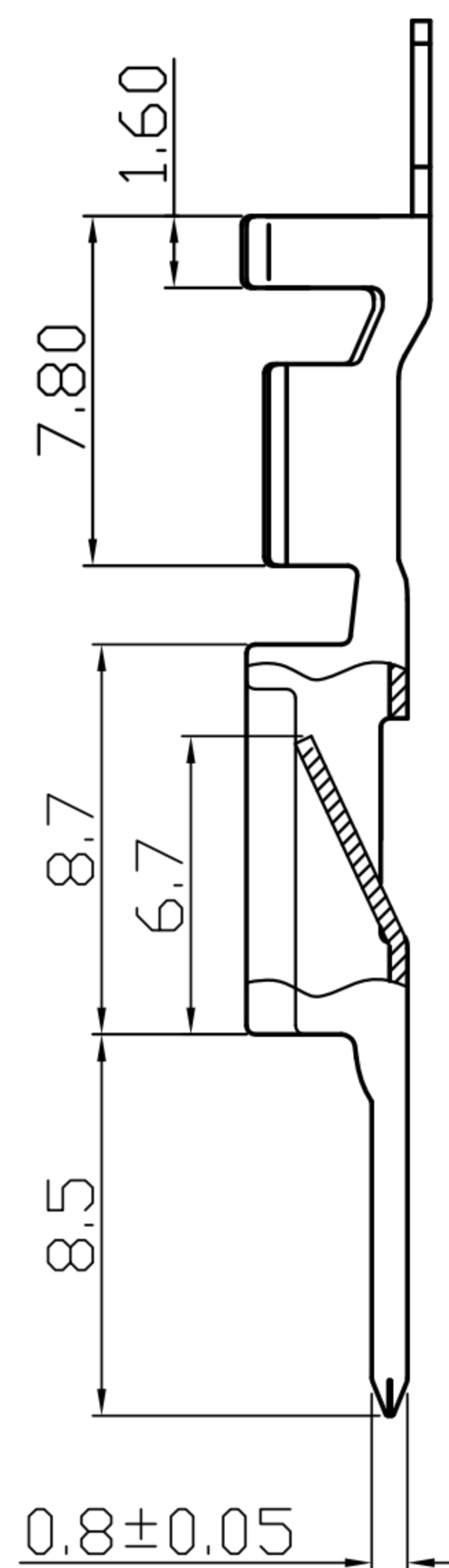
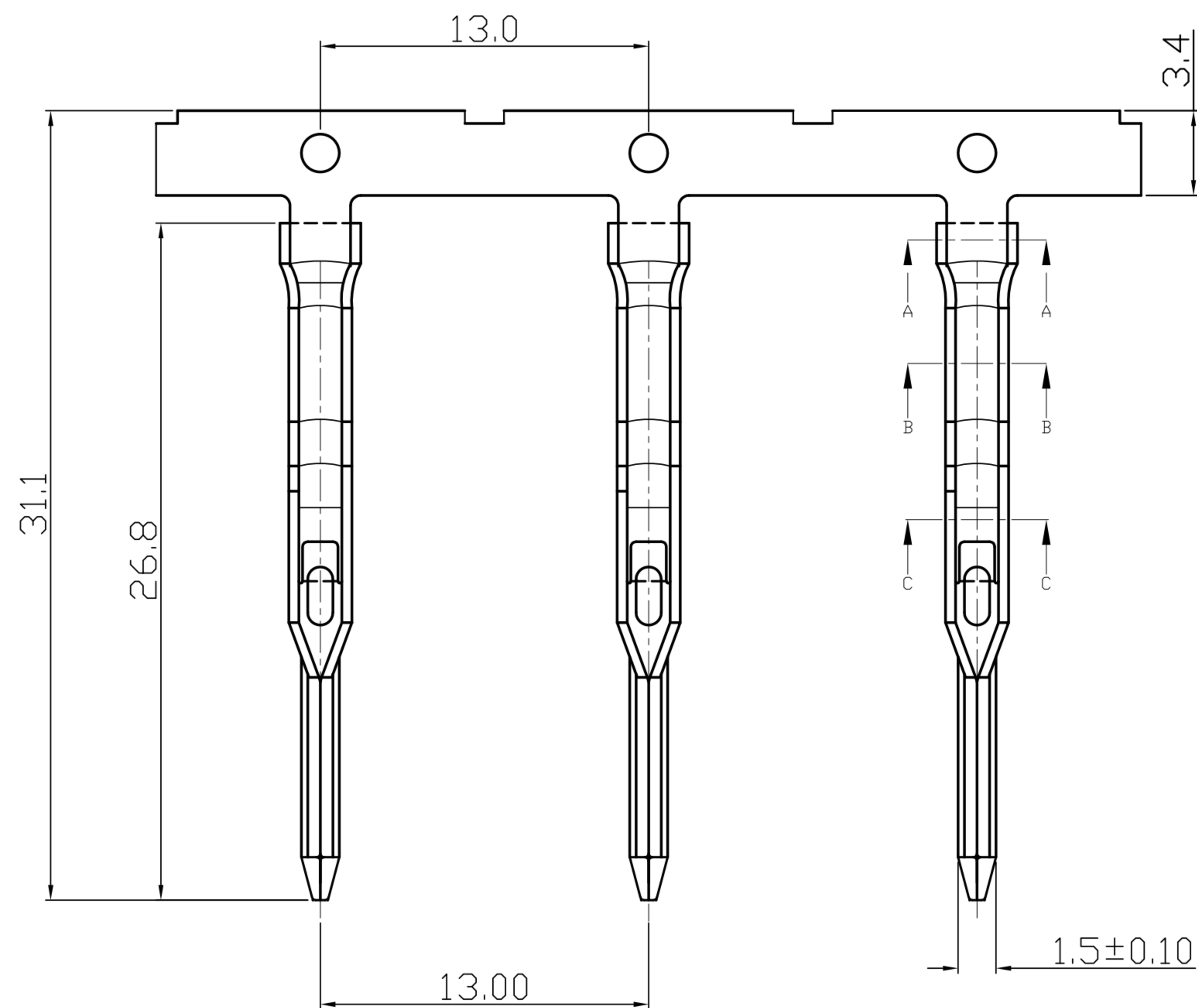
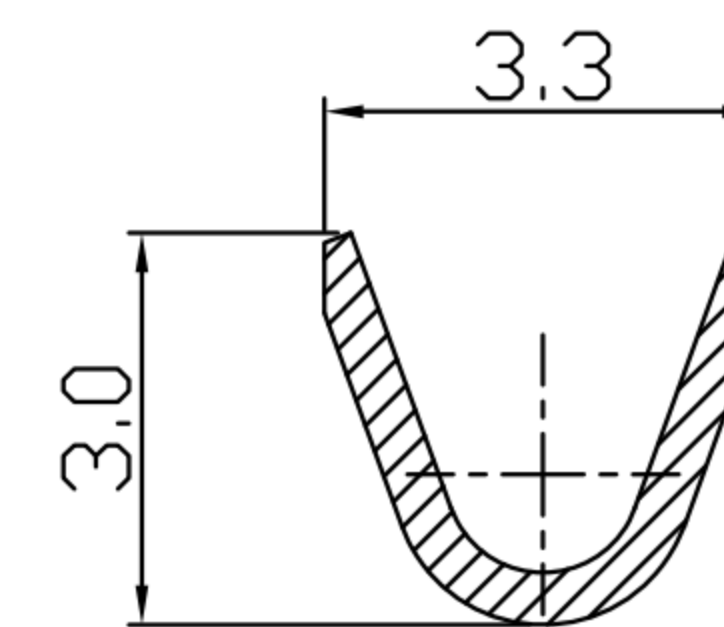


CUSTOMER DRAWING

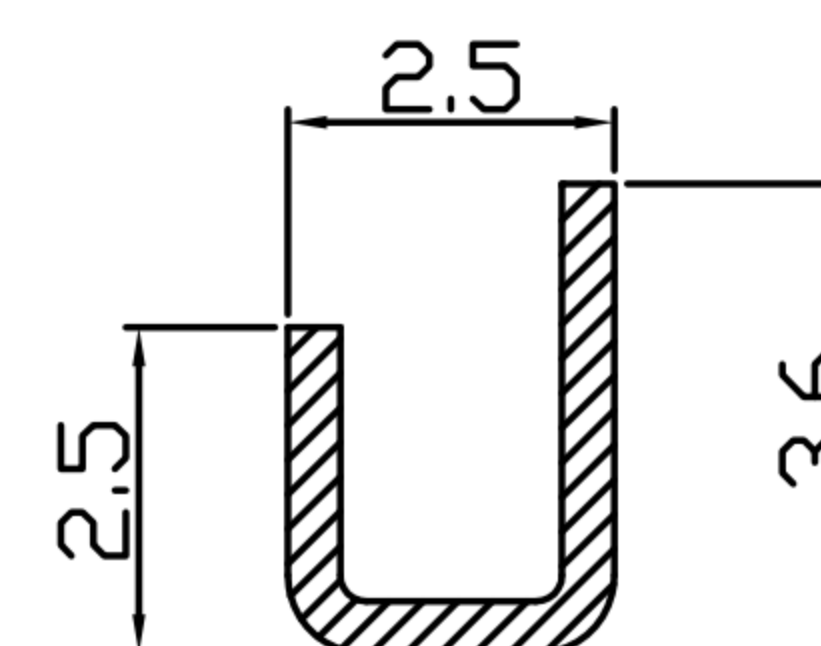
REV.	DESCRIPTION	APPROVED BY	DATE	ECN NO.
△A	RELEASE	Yeh Chou	2021/12/23	
△B				
△C				
△D				



SECTION A-A



SECTION B-B



SECTION C-C

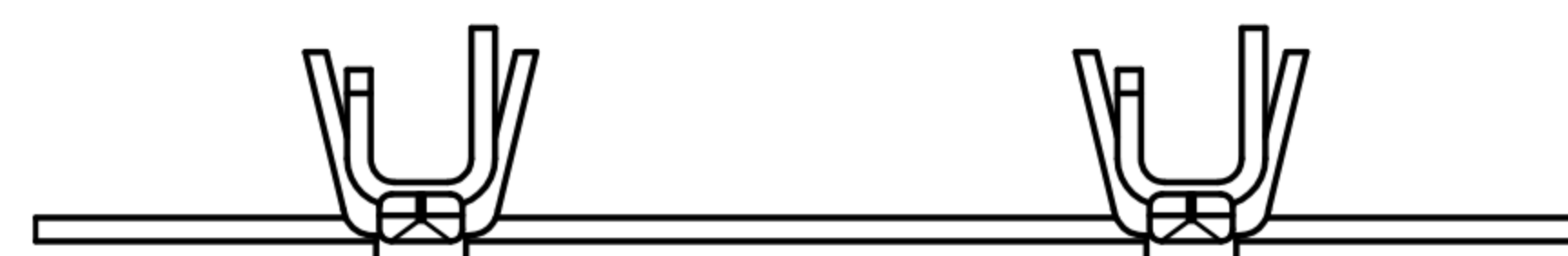


TABLE A

OY-TE0542-00	TIN 100u" MIN.
OY-TE1542-00	SOURCE MATERIAL/素材
P/N	FINISH

1.MATERIAL:

- 1-1.TERMINAL : PHOSPHORUS BRONZE T=0.40±0.015mm.
- 2-1.PLATING : BRIGHT TIN 100u" MIN  
UNDERPLATED NICKEL OVER ALL 50u" MIN.
- 3-1.WIRE RANGE : 22-20 AWG

DRAWN	YEH CHOU	APP'D	KU CHOU	UNIT	mm	TOLERANCE			TITLE	QBD2 SPRING TYPE CRIMP PIN(TIN 100u")			SHEET
CHK'D	KU CHOU			SCALE	1:1	.x ±0.10 .xx ±0.05 .xxx ±0.03 .xxxx ±0.01 ANGULA ±1°			PART NO.	SEE TABLE A	DWG NO.	QC10322	VERSION