

CUSTOMER DRAWING

REV.	DESCRIPTION	APPROVED BY	DATE	ECN NO.
△A	RELEASE	Fido Weng	26/02/20*	
△B				
△C				

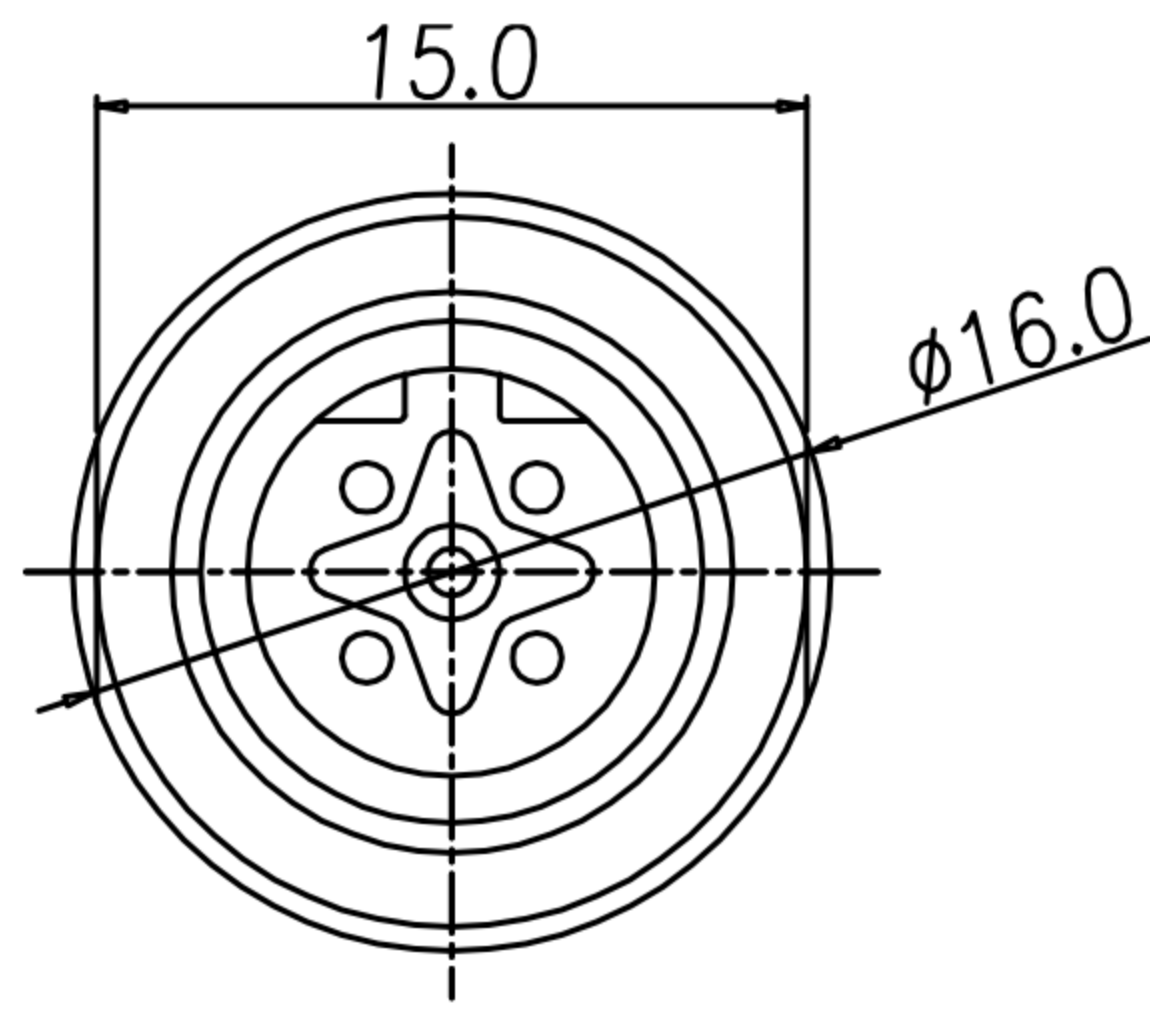
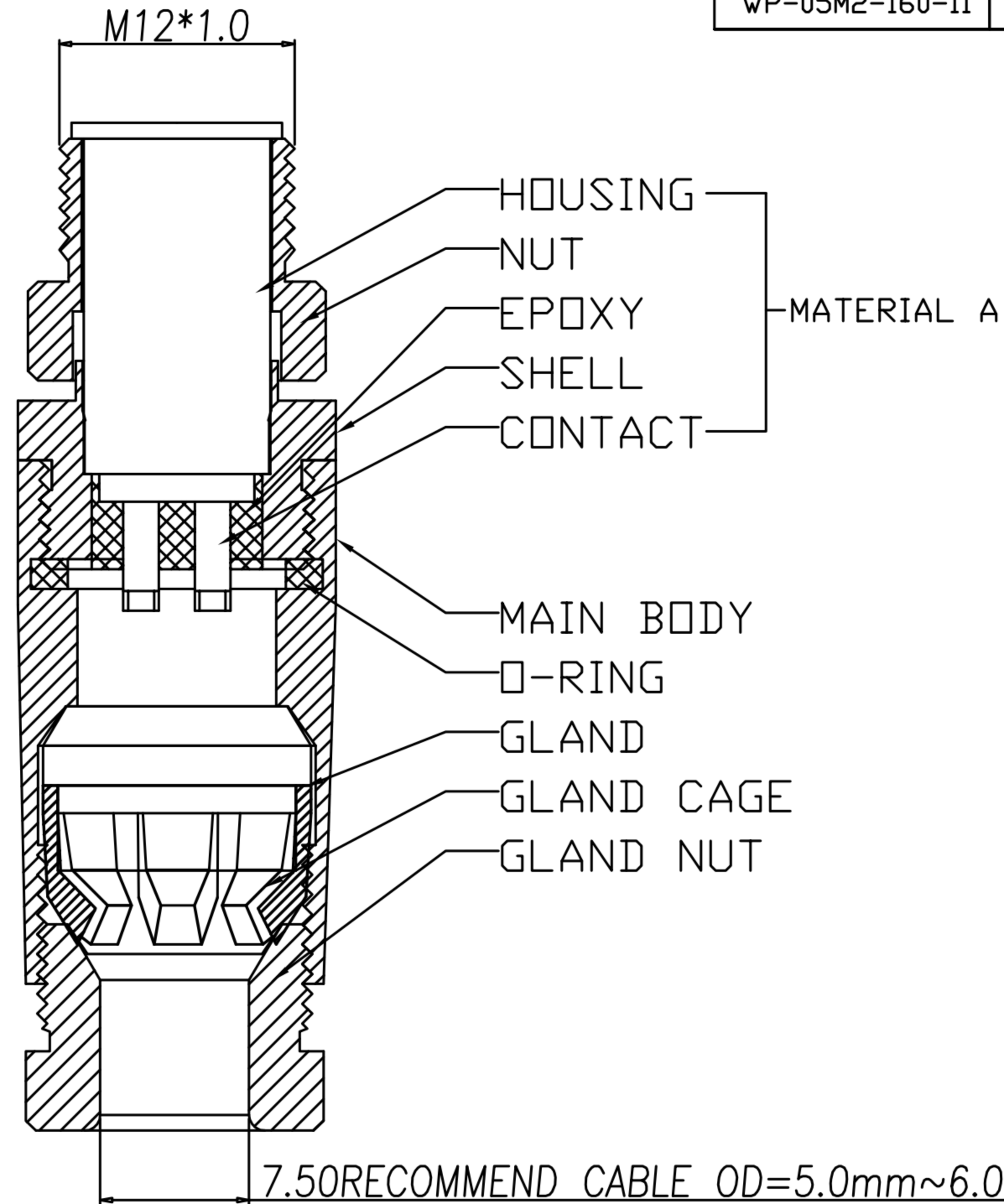
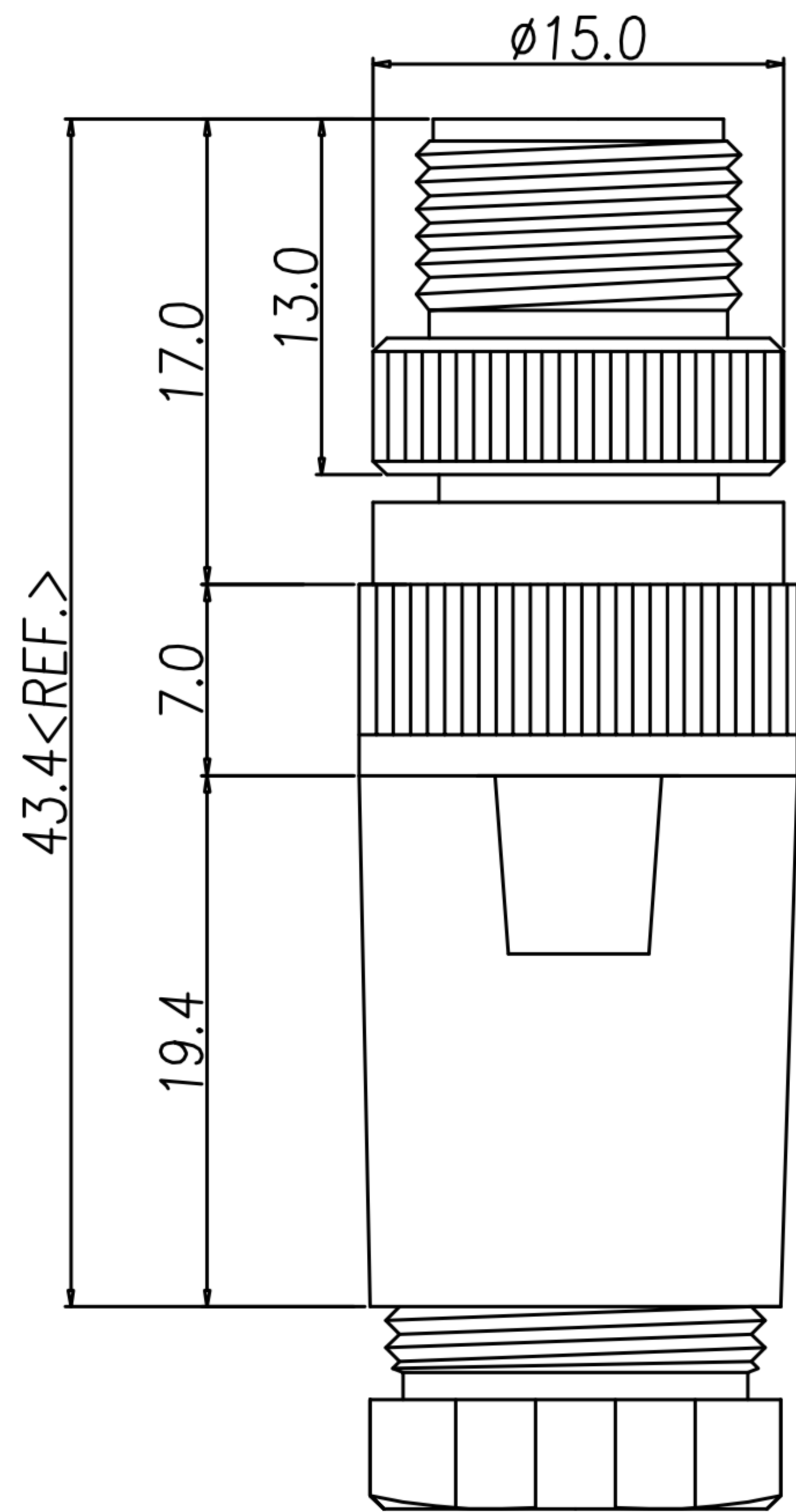


TABLE A

WP-05M2-160-11	WP-04M2-202-11	WP-03M2-115-11	WP-02M2-67-11



- MATERIAL :
  - MATERIAL A :
    - HOUSING : PBT UL94V-0 ; COLOR : BLACK.
    - CONTACT : BRASS
    - NUT : ALUMINIUM ALLOY
    - SHELL : ALUMINIUM ALLOY
  - MAIN BODY : ALUMINIUM ALLOY
  - GLAND : SILICONE COLOR : BLACK.
  - GLAND CAGE : POM ; COLOR : BLACK.
  - GLAND NUT : ALUMINIUM ALLOY
  - O-RING : SILICONE ; COLOR : BLACK.
- FINISH :
  - MATERIAL A :
    - CONTACT : GOLD FLASH MICRO INCHES MIN.  
UNDER PLATE : NICKEL.
    - NUT : SATIN NICKEL PLATED
    - SHELL : SATIN NICKEL PLATED
  - MAIN BODY : SATIN NICKEL PLATED
  - GLAND NUT : SATIN NICKEL PLATED.
- ELECTRICAL SPECIFICATION :
  - Rated current : 4A
  - Rated voltage : 2~4PIN 250V ; 5PIN 60V
  - Water proof : IP67/IP68
- Environmental :
  - Operation Temperature : -20℃~85℃

DRAWN	Ku Chou	APP'D	Emily Suen	UNIT	mm	TOLERANCE			TITLE	M12 (M) B-coded Assembly type			SHEET	
CHK'D	Emily Suen			SCALE	1:1	.x ±0.20 .xx ±0.10 .xxx ±0.05 .xxxx ±0.03 ANGULA ±1°			PART NO.	SEE TABLE A	DWG NO.	QC9582	VERSION	