

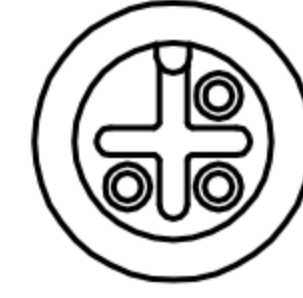


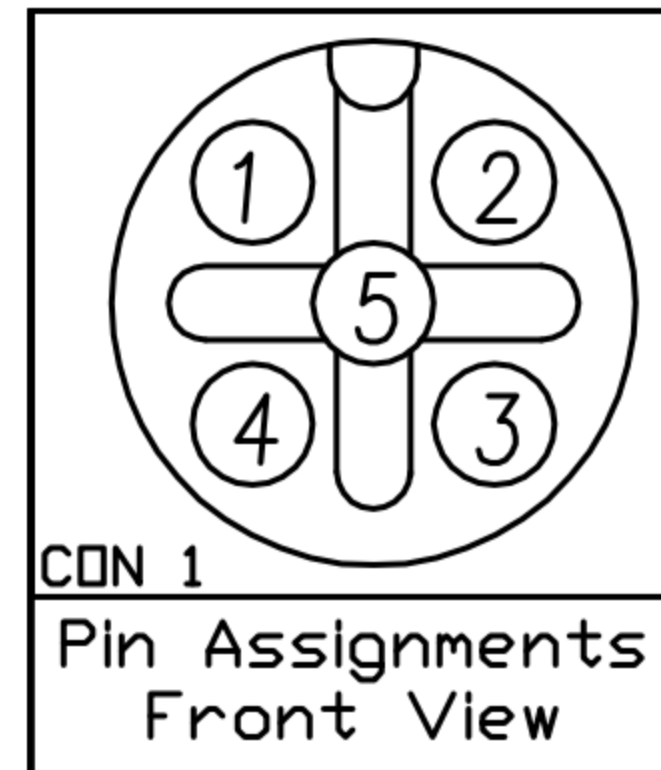
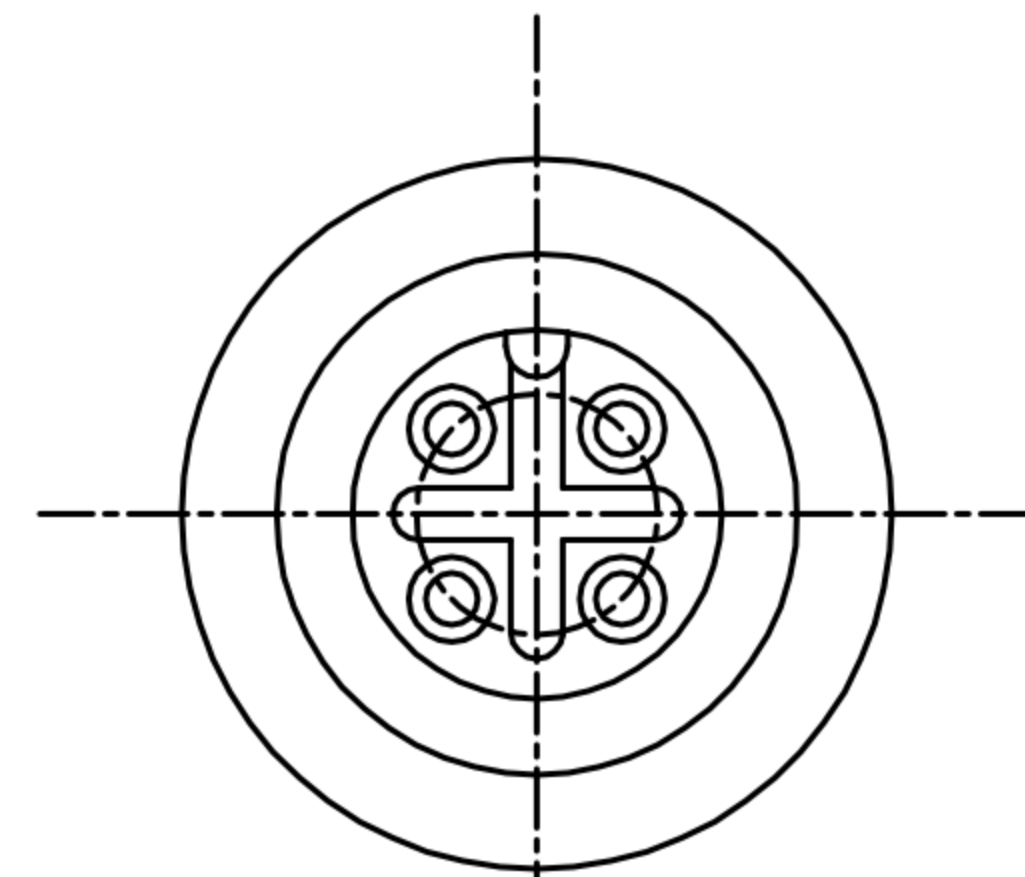
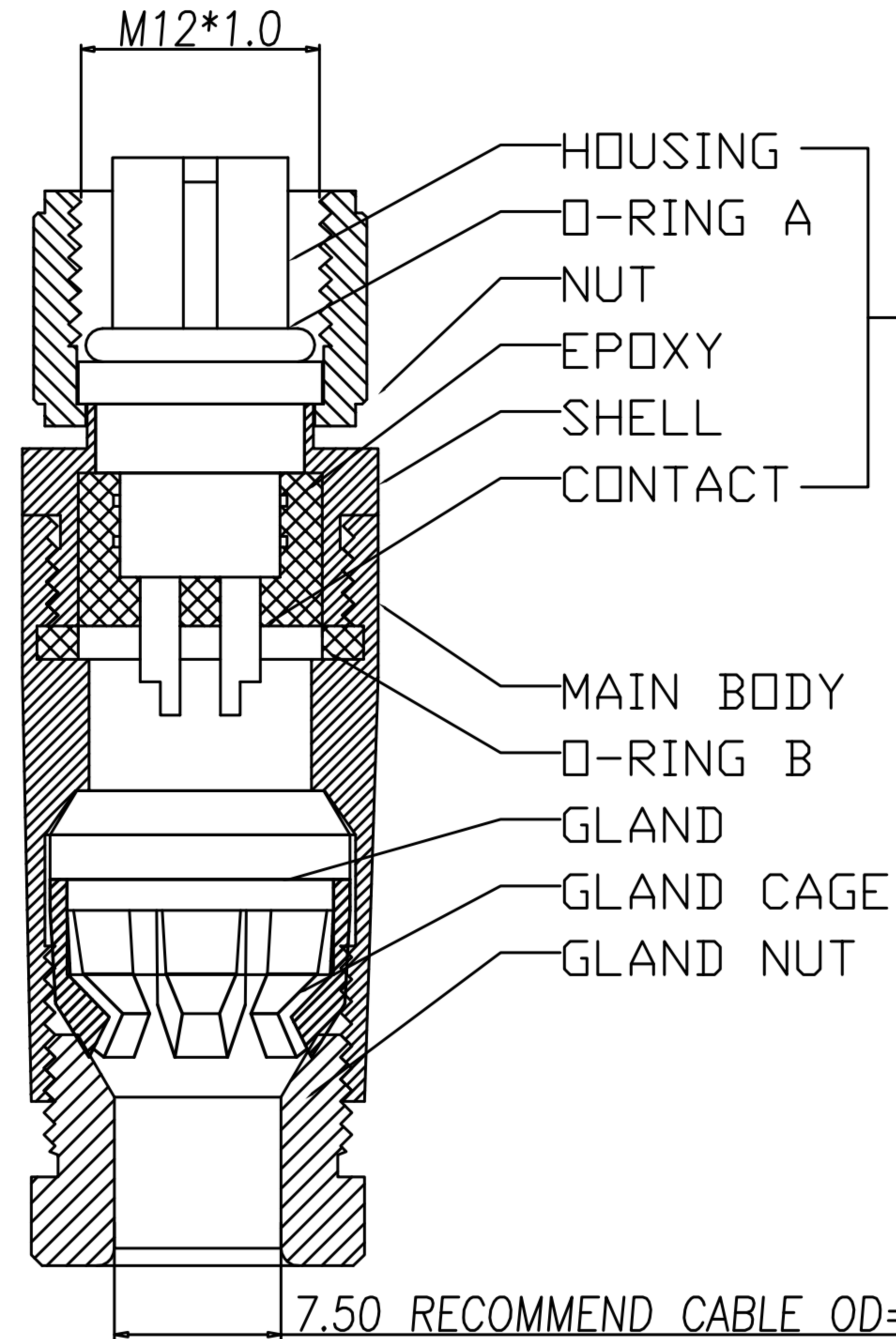
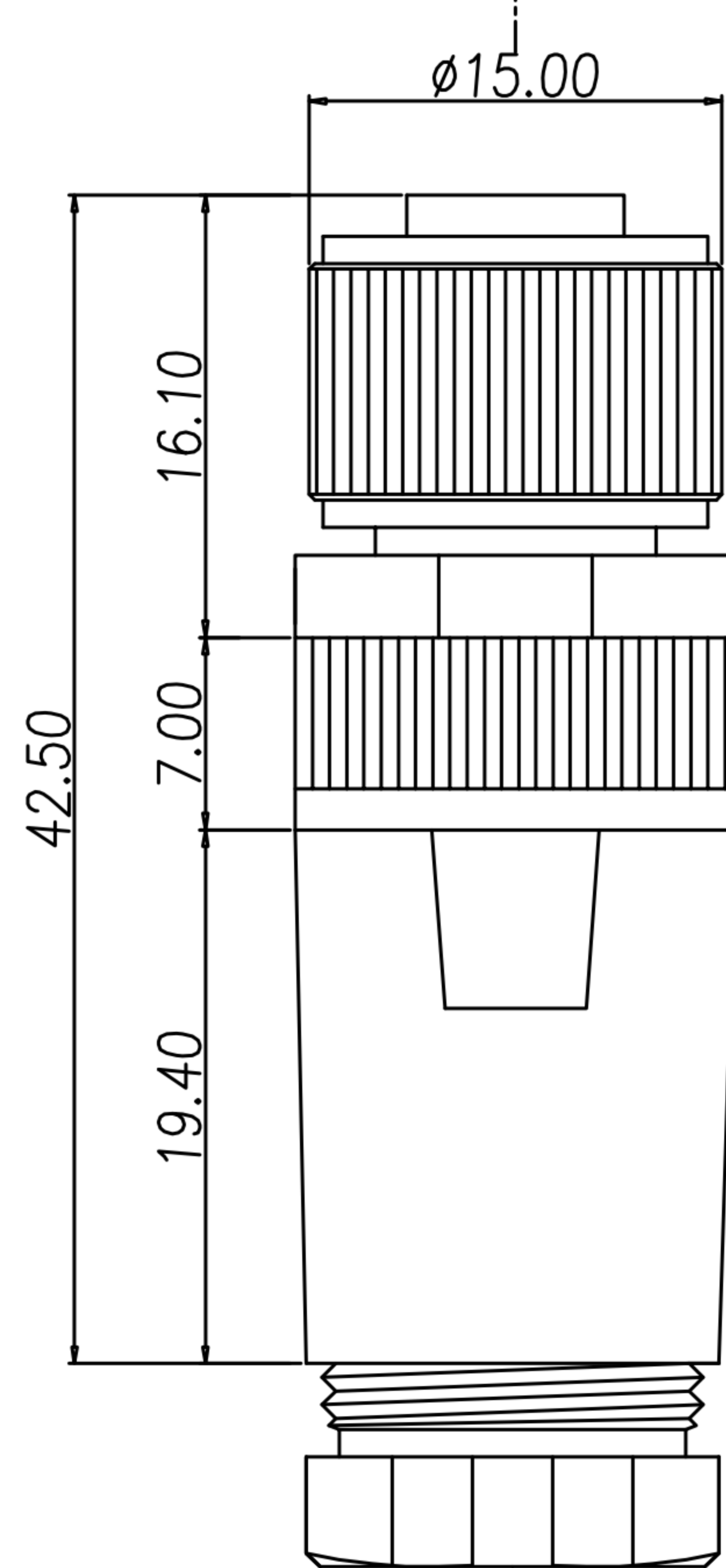


## CUSTOMER DRAWING

REV.	DESCRIPTION	APPROVED BY	DATE	ECN NO.
A	RELEASE	Fido Weng	10/01/11'	
B				
C				

TABLE A

				
WP-05F2-73 WP-05F2-108-11	WP-04F2-62 WP-04F2-151-11	WP-03F2-53-11 WP-03F2-71-11	WP-03F2-56-11 WP-03F2-74-11	WP-02F2-52-11 WP-02F2-53-11
WP-02F2-52-11	GOLD 10u"	WP-02F2-53-11	GOLD FLASH	
WP-03F2-71-11	GOLD 10u"	WP-03F2-56-11	GOLD FLASH	
WP-04F2-151-11	GOLD 10u"	WP-03F2-53-11	GOLD FLASH	
WP-03F2-74-11	GOLD 10u"	WP-04F2-62	GOLD FLASH	
WP-05F2-108-11	GOLD 10u"	WP-05F2-73	GOLD FLASH	
PART NO	FINISH	PART NO	FINISH	

CON 1  
Pin Assignments  
Front View

MATERIAL A

## 1. MATERIAL :

## 1-1. MATERIAL A :

- a. HOUSING : PBT UL94V-0 ; COLOR : BLACK.
- b. CONTACT : BRASS
- c. NUT : ALUMINIUM ALLOY
- d. SHELL : ALUMINIUM ALLOY
- e. O-RING A : EPDM ; COLOR : BLACK

## 1-2. MAIN BODY : ALUMINIUM ALLOY

## 1-3. GLAND : SILICONE ; COLOR : BLACK.

## 1-4. GLAND CAGE : POM ; COLOR : WHITE.

## 1-5. GLAND NUT : ALUMINIUM ALLOY

## 1-6. O-RING B : SILICONE ; COLOR : BLACK

## 2. FINISH :

## 2-1. MATERIAL A :

- a. CONTACT : SEE TABLE A
- b. NUT : SATIN NICKEL PLATED.
- c. SHELL : SATIN NICKEL PLATED.

## 2-2. MAIN BODY : SATIN NICKEL PLATED.

## 2-3. GLAND NUT : SATIN NICKEL PLATED.

## 3. ELECTRICAL SPECIFICATION :

## 3-1. Rated current : 4A

## 3-2. Rated voltage : 2~4PIN 250V ; 5PIN 60V

## 3-3. Water proof : IP67

## 4. Environmental :

## 4-1. Operation Temperature : -20℃~85℃

DRAWN	Ku Chou	APP'D	Emily Suen	UNIT	mm	TOLERANCE			广东科斯达电子科技有限公司 GUANG DONG KE SI DA ELECTRONIC TECHNOLOGY CO., LTD.	TITLE	M12 (F) A-coded Assembly type			SHEET
CHK'D	Emily Suen			SCALE	1:1	.x ±0.20 .xx ±0.10 .xxx ±0.05 .xxxx ±0.03 ANGULA ±1°				PART NO.	SEE TABLE A	DWG NO.	QC5210	VERSION A