

CUSTOMER DRAWING

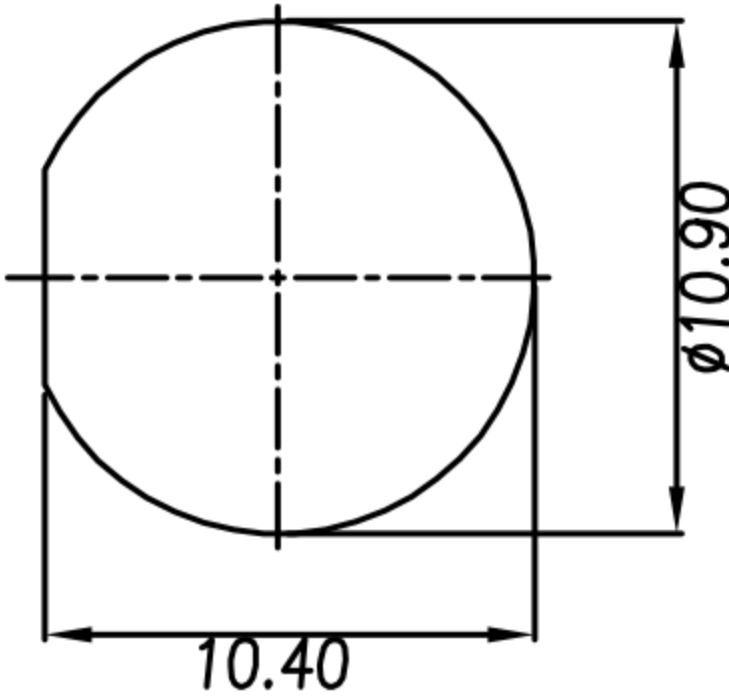
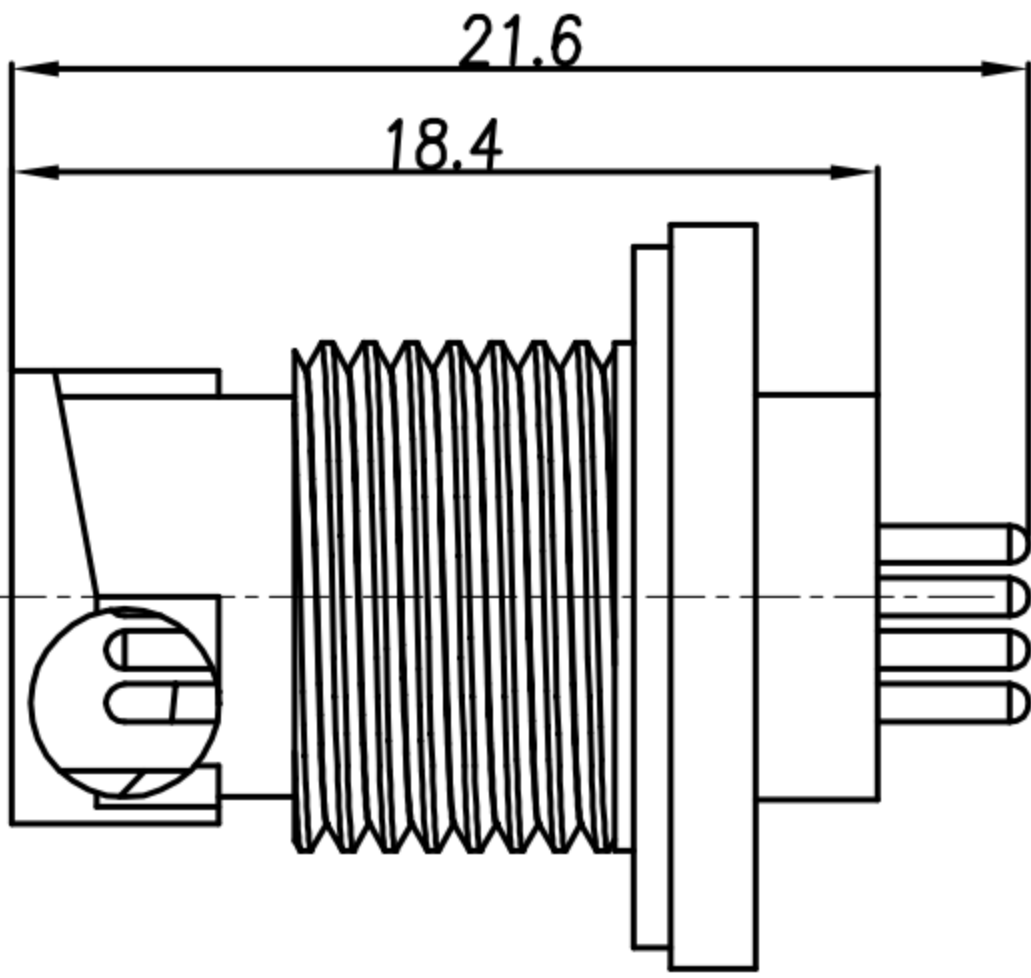
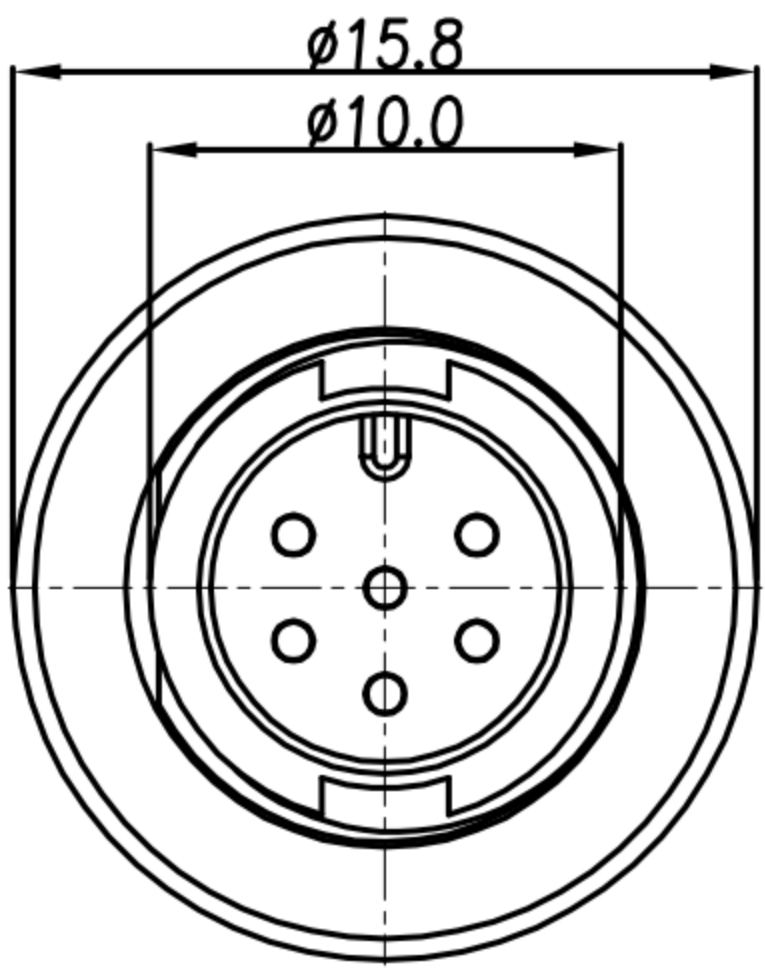
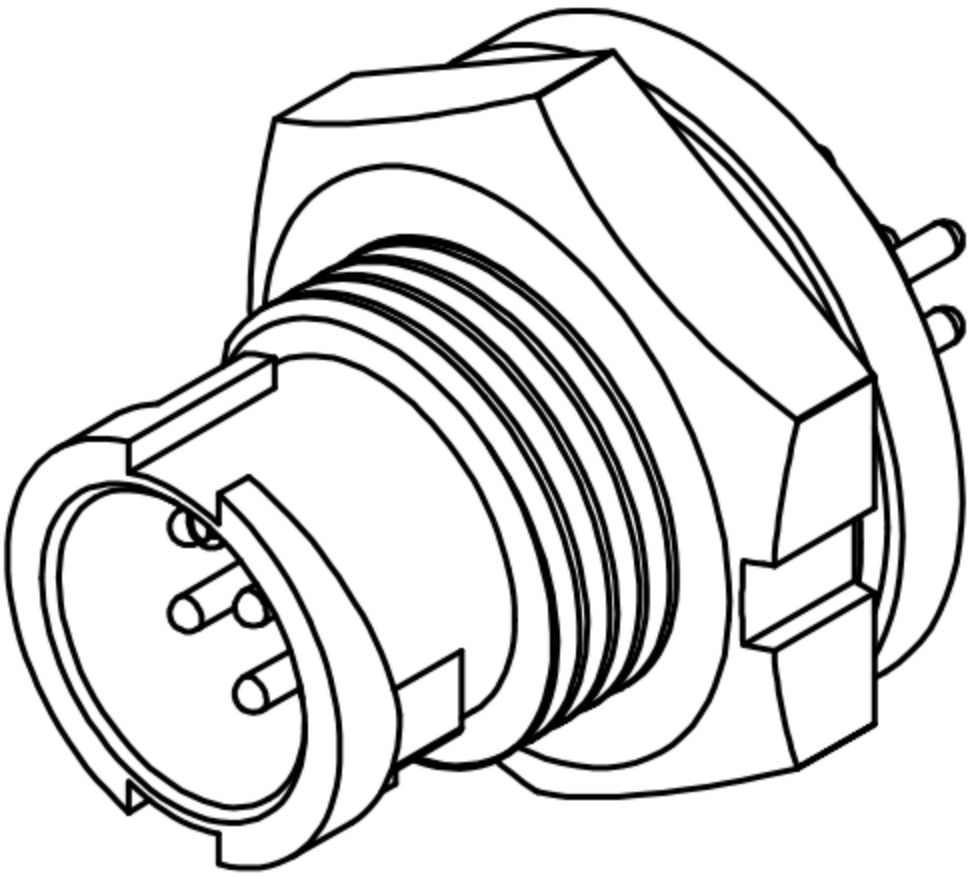
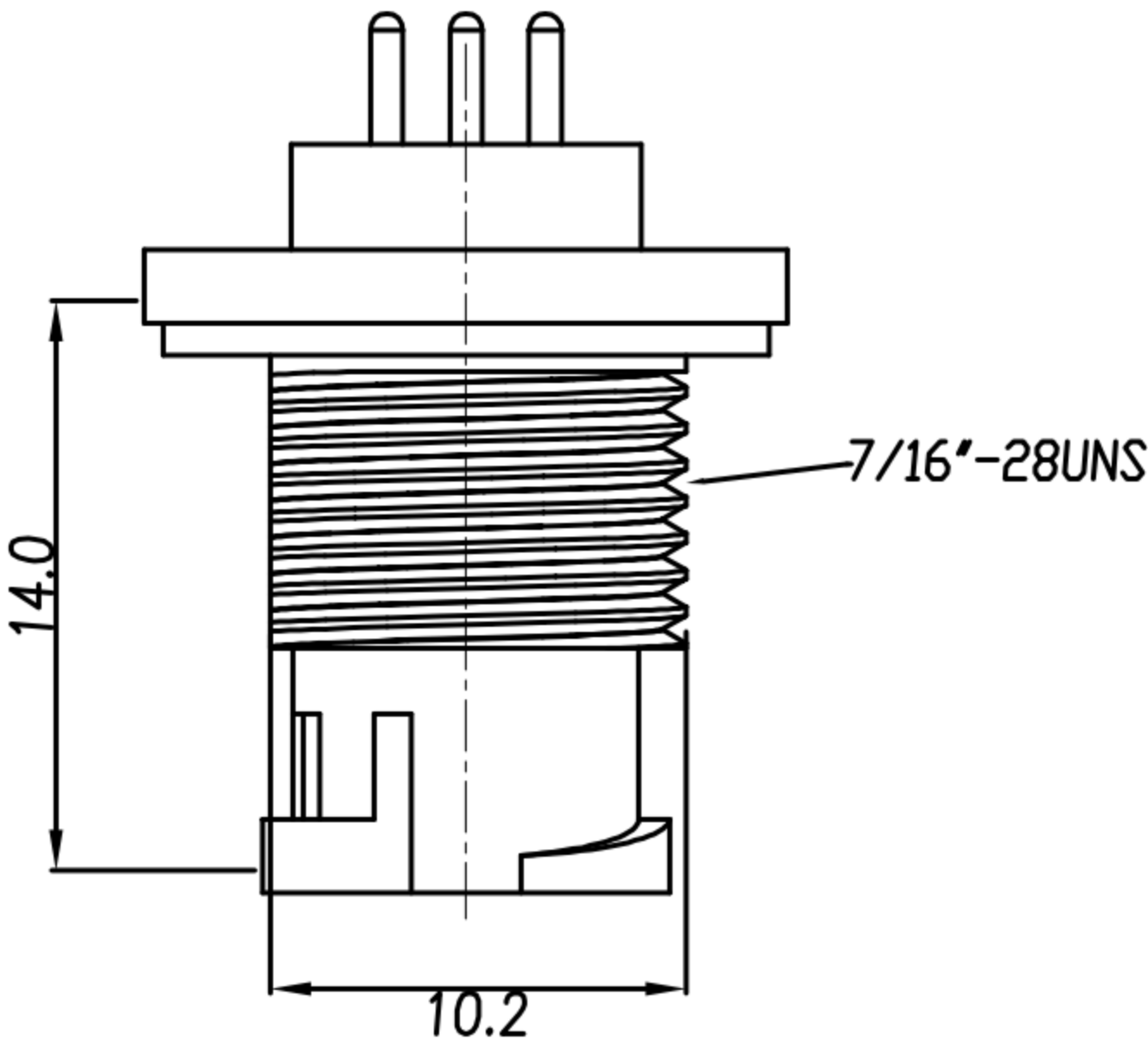
REV.	DESCRIPTION	APPROVED BY	DATE	ECN NO.
A	RELEASE	Ku Chou	16/07/18	
B				
C				

TABLE A

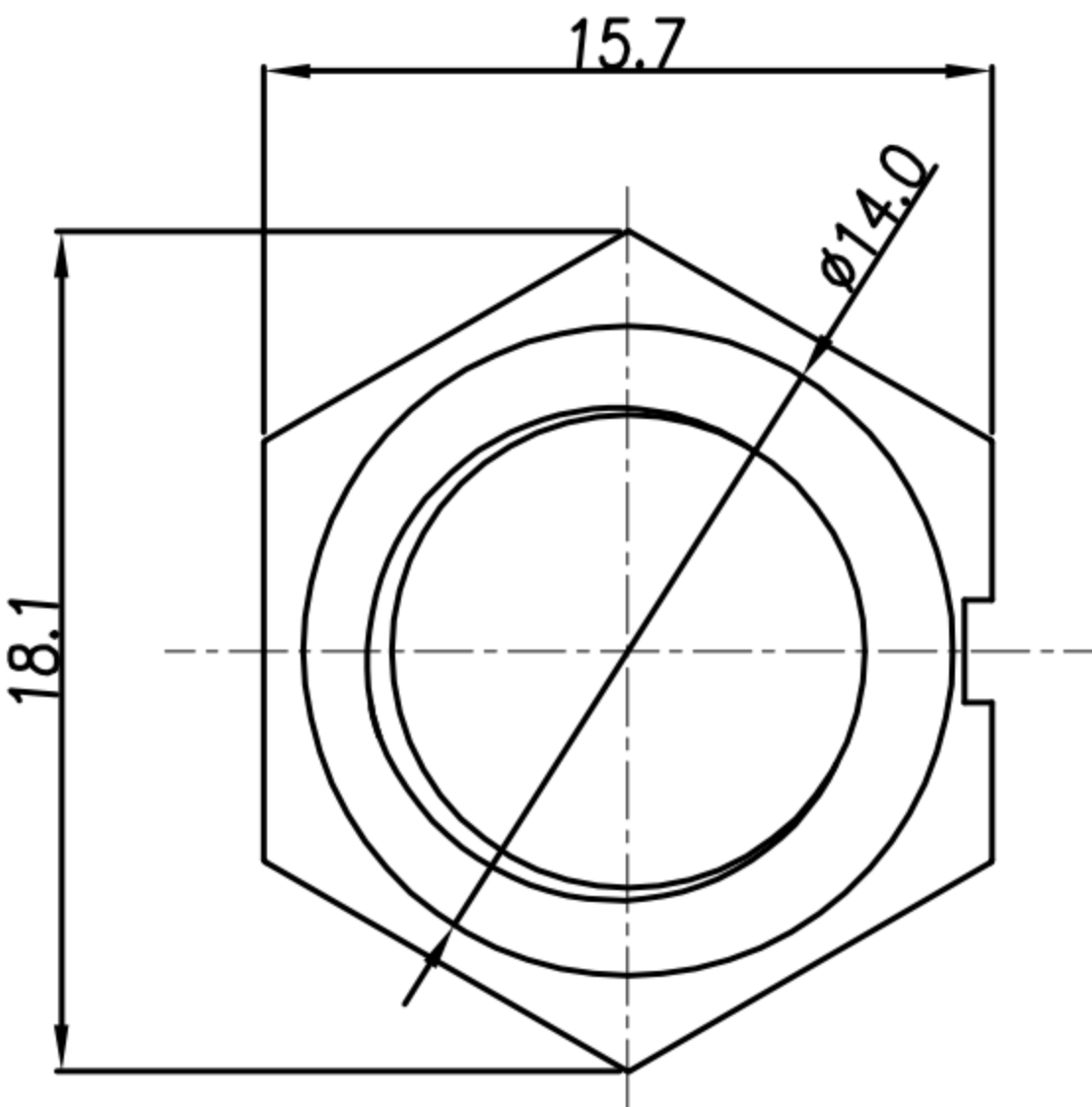
WP-04M3-07-11	WP-05M3-08-11	WP-06M3-06-11

PIN4 ASSIGNMENTS & PCB LAYOUT
FRONT VIEW

1. MATERIAL :
1-1. HOUSING : PA66
1-2. CONTACT : BRASS
1-3. GASKET : SILICONE
1-4. HEX NUT : PA66
2. FINISH :
2-1. CONTACT : GOLD FLASH PLATED.
3. ELECTRICAL SPECIFICATION :
3-1. Rated current : 2A
3-2. Rated voltage : 250V
3-3. Water proof : IP67
4. Environmental :
4-1. Operation Temperature : -40℃~105℃



RECOMMENDED PANEL CUT-OUT



HEX NUT

