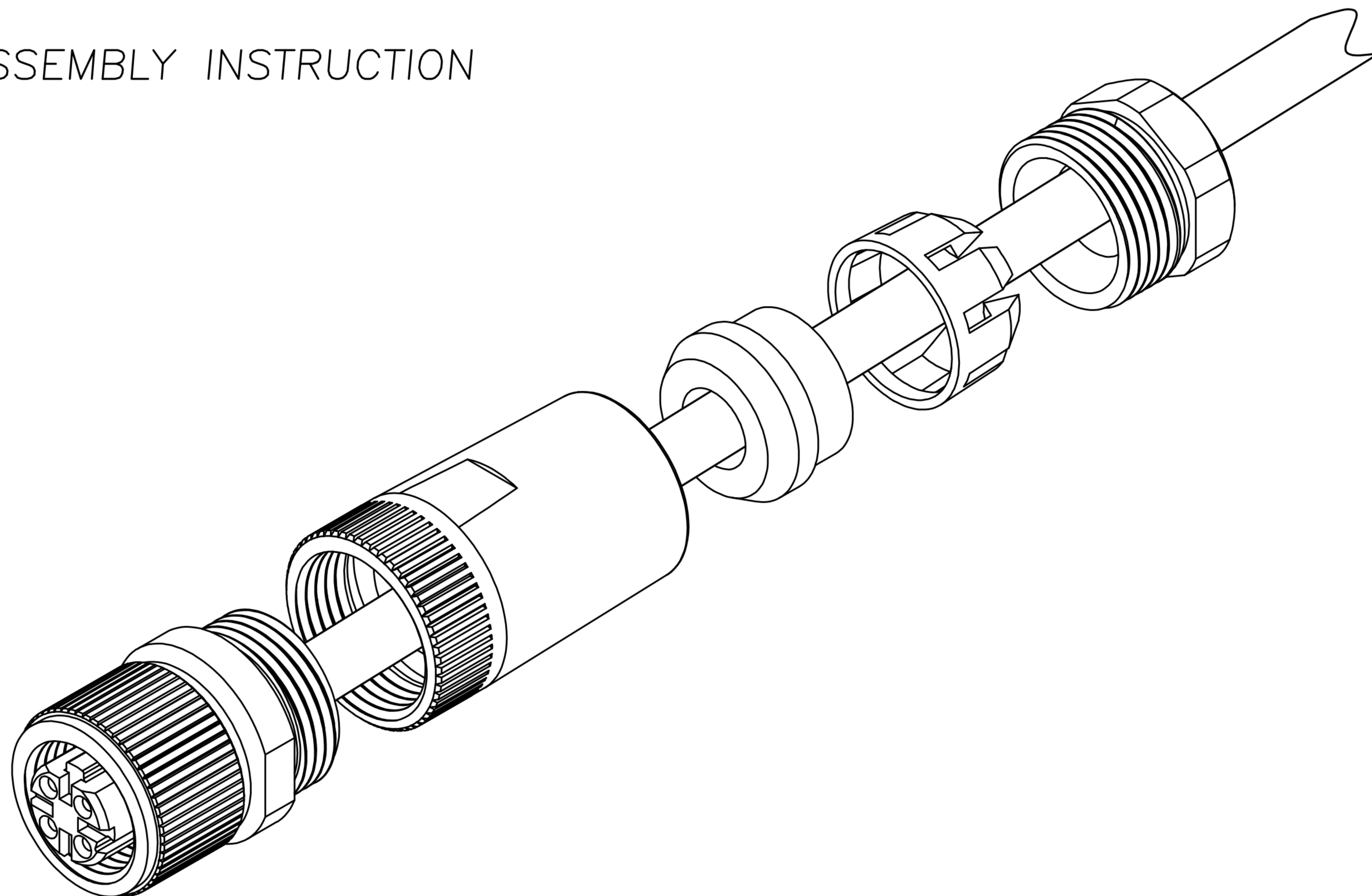


CUSTOMER DRAWING

REV.	DESCRIPTION	APPROVED BY	DATE	ECN NO.
△A	RELEASE	Fido Weng	10/01/11'	
△B				
△C				

ASSEMBLY INSTRUCTION



DRAWN	Mark Kao	APP'D	Ku Chou	UNIT	mm	TOLERANCE		广东科斯达电子科技有限公司 GUANG DONG KE SI DA ELECTRONIC TECHNOLOGY CO., LTD.	TITLE	M12 4PIN(F) D-coded Assembly type			SHEET	2
CHK'D	Emly Suen			SCALE	1:1	.x ±0.20 .xx ±0.10 .xxx ±0.05 .xxxx ±0.03 ANGULA ±1°			PART NO.	SEE TABLE A	DWG NO.	QC5982	VERSION	A

CUSTOMER DRAWING

REV.	DESCRIPTION	APPROVED BY	DATE	ECN NO.
△A	RELEASE	Fido Weng	10/01/11'	
△B				
△C				

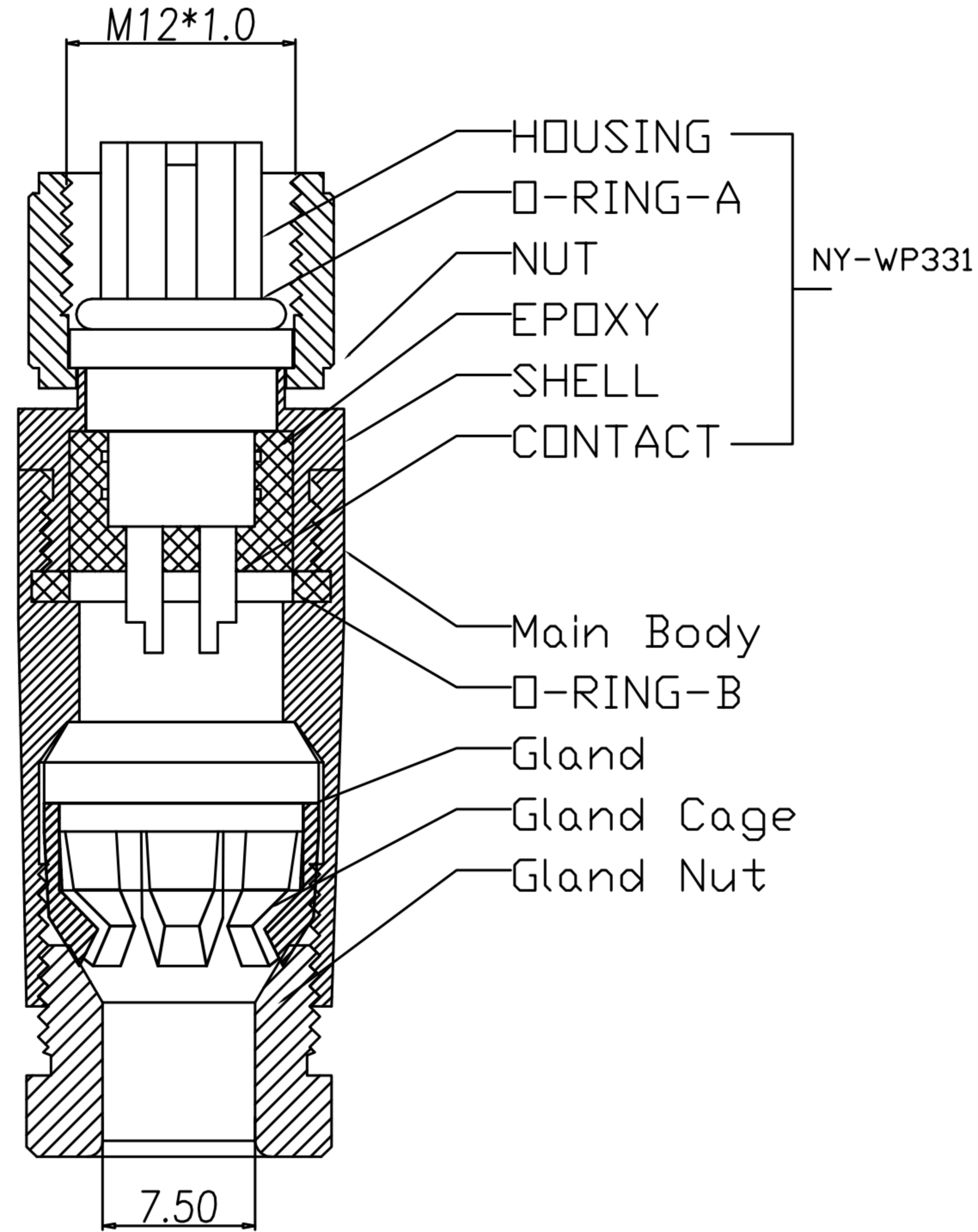
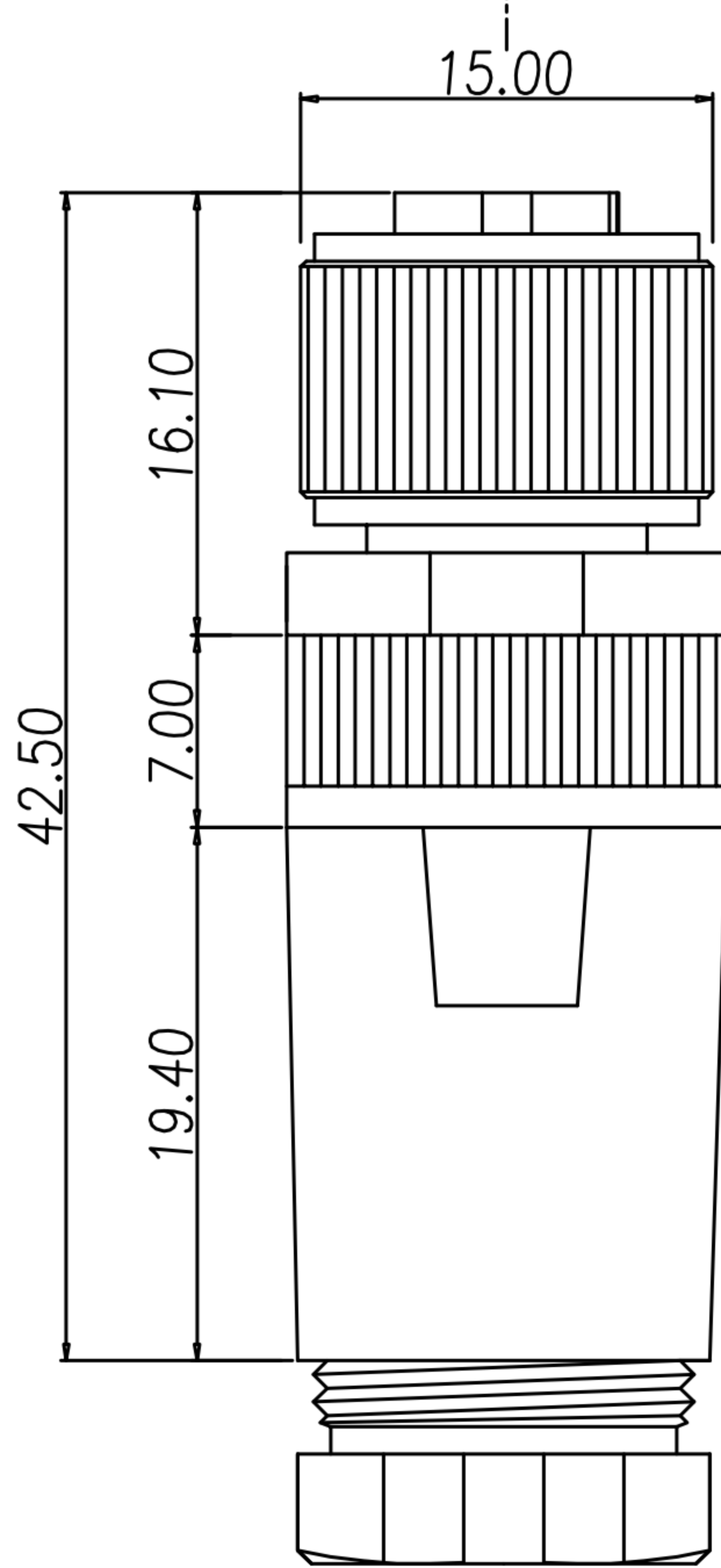
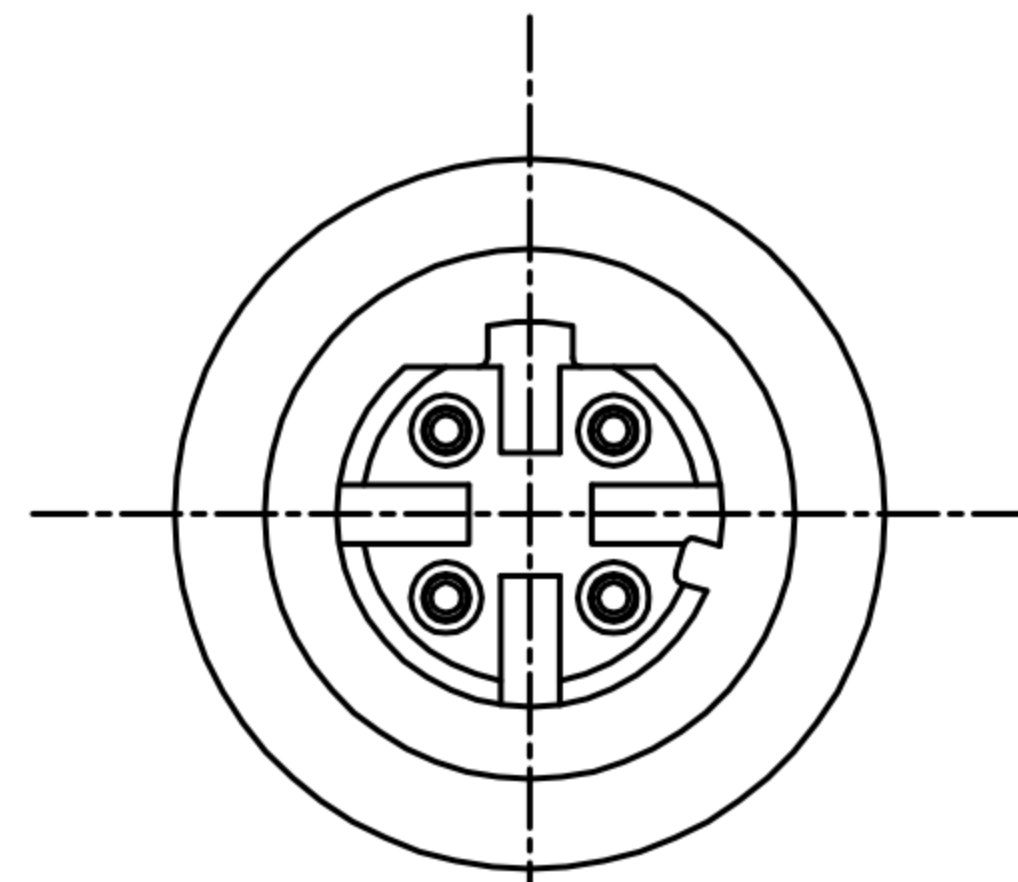


TABLE A

PART NO	FINISH
WP-04F2-94	GOLD FLASH
WP-04F2-163-11	GOLD 10u"

1. MATERIAL :

1-1. NY-WP331 :

- a. HOUSING : PBT UL94V-0 ; COLOR : BLACK.
- b. CONTACT : BRASS
- c. NUT : ALUMINUM ALLOY
- d. SHELL : ALUMINUM ALLOY
- e. O-RING-A : EPDM ; COLOR : BLACK

1-2. Main Body : ALUMINUM ALLOY

1-3. Gland : SILICONE COLOR : BLACK.

1-4. Gland Cage : POM ; COLOR : BLACK.

1-5. Gland Nut : ALUMINUM ALLOY.

1-6. O-Ring-B : SILICONE COLOR : BLACK.

2. FINISH :

2-1. NY-WP331 :

- a. CONTACT : SEE TABLE A
- UNDER PLATE : NICKEL.
- b. NUT : SATING Ni PLATED.
- c. SHELL : SATING Ni PLATED.

2-2. Main Body : SATING Ni PLATED.

2-3. Gland Nut : SATING Ni PLATED.

3. ELECTRICAL SPECIFICATION :

3-1. Rated current : 4A

3-2. Rated Voltage : 250V

3-3. Water proof : IPX7

4. Environmental :

4-1. Operation Temperature : -20°C~85°C

DRAWN	Mark Kao	APP'D	Ku Chou	UNIT	mm	TOLERANCE		TITLE	M12 4PIN(F) D-coded Assembly type			SHEET
CHK'D	Emily Suen			SCALE	1:1			PART NO.	SEE TABLE A	DWG NO.	QC5982	VERSION