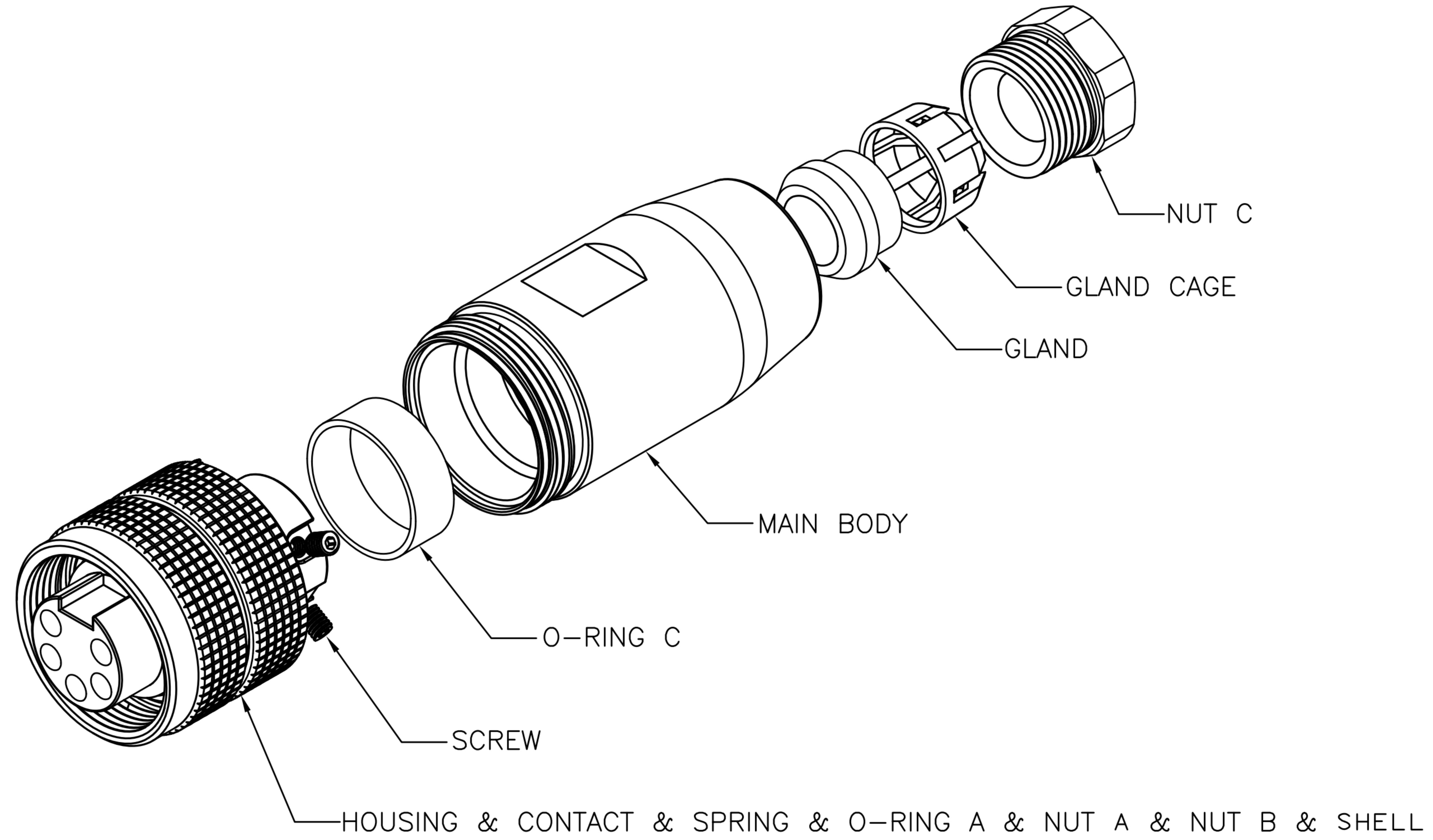


1	A	B	C	D	E	F			
	CUSTOMER DRAWING				REV.	DESCRIPTION	APPROVED BY	DATE	ECN NO.
					△A	RELEASE	Emily Suen	25/10/11'	
					△B				
					△C				
					△D				

# ASSEMBLY INSTUCTION

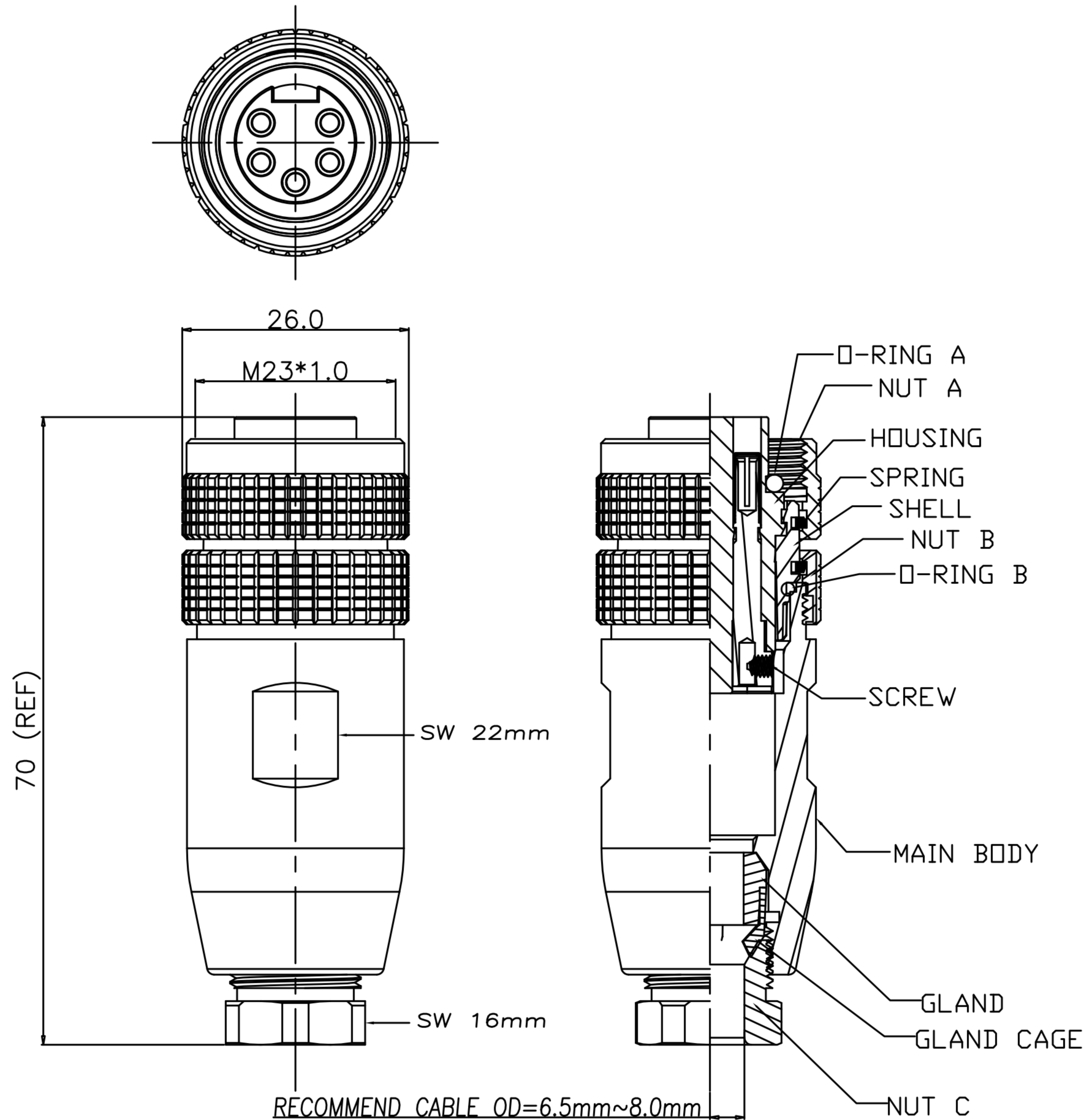


DRAWN	Emily Suen	APPVL	Ku Chou	UNIT	mm	TOLERANCE		广东科斯达电子科技有限公司 GUANG DONG KE SI DA ELECTRONIC TECHNOLOGY CO., LTD.	TITLE	M23 5PIN (F) 180° 鎖線接頭式			SHEET	2
CHK'D	Emily Suen			SCALE	1:1	.x ±0.20 .xx ±0.10 .xxx ±0.05 .xxxx ±0.03 ANGULA ±1°			PART NO.	WP-05F2-117-11	DWG NO.	QC7451	VERSION	A



CUSTOMER DRAWING

REV.	DESCRIPTION	APPROVED BY	DATE	ECN NO.
△A				
△B				
△C				



1. MATERIAL :
  - 1-1. HOUSING : TPU ; COLOR : YELLOW.
  - 1-2. SPRING : STAINLESS STEEL.
  - 1-3. O-RING A : EPDM ; COLOR : BLACK.
  - 1-4. NUT A : BRASS.
  - 1-5. NUT B : BRASS.
  - 1-6. SHELL : ALUMINIUM ALLOY
  - 1-7. SCREW : ALLOY STEEL
  - 1-8. O-RING B : NBR ; COLOR : BLACK.
  - 1-9. CONTACT : BRASS.
  - 1-10. MAIN BODY : ALUMINIUM ALLOY
  - 1-11. GLAND : SILICONE ; COLOR : BLACK.
  - 1-12. GLAND CAGE : POM ; COLOR : WHITE.
  - 1-13. NUT C : ALUMINIUM ALLOY
  - 1-14. O-RING C : SILICONE ; COLOR : BLACK
2. FINISH :
  - 2-1. NUT A : NICKEL PLATED OVER ALL
  - 2-2. NUT B : NICKEL PLATED OVER ALL
  - 2-3. SHELL : NICKEL PLATED OVER ALL
  - 2-4. CONTACT : GOLD FLASH ON OVER ALL
  - 2-5. SCREW : NICKEL PLATED OVER ALL
  - 2-6. MAIN BODY : NICKEL PLATED OVER ALL
  - 2-7. NUT C : NICKEL PLATED OVER ALL
3. ELECTRICAL SPECIFICATION :
  - 3-1. Rated current : 20A
  - 3-2. Rated voltage : 250V
  - 3-3. Water proof : IP67
4. Environmental :
  - 4-1. Operation Temperature : -40℃~85℃

DRAWN	Ku Chou	APP'D	Emily Suen	UNIT	mm	TOLERANCE		广东科斯达电子科技有限公司 GUANG DONG KE SI DA ELECTRONIC TECHNOLOGY CO., LTD.	TITLE	M23 5PIN (F) 180° 鍍線裝配式			SHEET	1/2
CHK'D	Emily Suen			SCALE	1:1	.x ±0.25 .xx ±0.10 .xxx ±0.05 .xxxx ±0.03 ANGULA ±1°			PART NO.	WP-05F2-117-11	DWG NO.	QC7451	VERSION	A